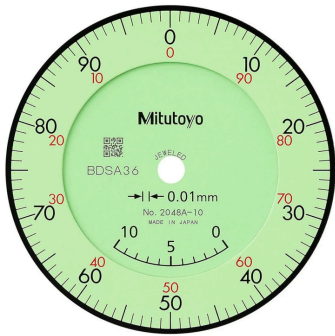
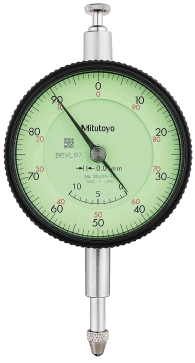


Dial Gauge, Flat Back, ISO Type

Item number: 2048AB-10

Images



Description

This special dial indicators offer you the following benefits:

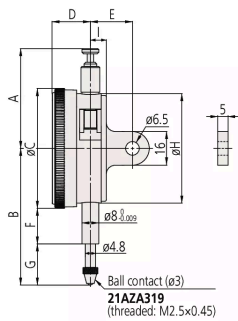
- In an adjustable pointer type the pointer can be adjusted independently of the position of the spindle by rotating the top knob.
- In a peak hold type a mechanism holds the pointer and the spindle at the position of maximum depression and hence displays the maximum value.

Features

Digital/Analog:	Analog
Inch-Metric:	Metric
Type:	EN ISO Standard
Delivered:	With certificate of inspection
Range:	10 mm
Range per rev.:	1 mm
Dial reading:	$\pm 0-100$
Graduation:	0.01 mm

MPE any 1/10 revolution:	5 µm
MPE any 1/2 revolution:	9 µm
MPE any 1 revolution:	10 µm
MPE measuring range:	15 µm
H MPE (Hysteresis):	3 µm
R MPE (Repeatability):	3 µm
Measuring force:	0,4-1,4 N
Mass:	135 g
Stem:	8 mm
Contact point:	Carbide tipped, thread: M 2.5 x 0.45 mm
Continuous dial:	Yes
Coaxial revolution counter:	Yes
Adjustable pointer:	Yes

Dimensions



A: 47,4 mm

B: 64.9 mm

C: 57 mm

D: 18.1 mm

E: 20 mm

F: 16.9 mm

G: 19.5 mm

H: 52 mm

I: 7,6 mm

Accessories

Optional accessories:



Limit Hands (green) 2pcs

Dial Indicator Series 2/3/4

Art No. 21AZB195

Price on application



Bezel Clamp for Dial Gauge

Metric, Series 2/3/4

Art No. 21AZB148

Price on application

Spindle Lifting Lever

for Digital Indicator, A-Type Dial Indicator
Serie 2/3/4

Art No. 21EZA198

Price on application



Spare parts

Consumable spares:



Contact Element Ball Point, M2,5x0,45

8,3mm Length, Metric

Art No. 21AZA319

Suggested retail price: 17.00 €*