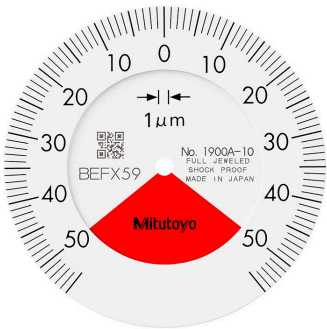
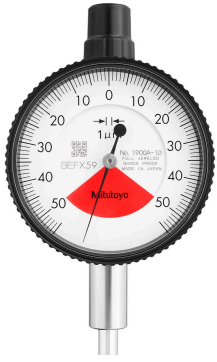


## Dial Gauge, Flat Back, ISO Type

Item number: 1900AB-10

### Images



### Description

This is a compact, metric dial indicator. It offers you the following benefits:

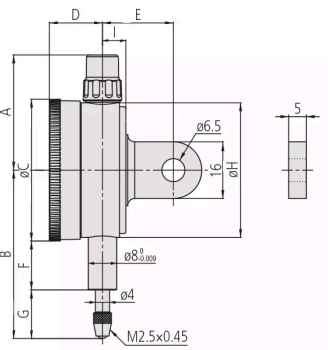
- It eliminates the possibility of reading errors due to miscounting multiple revolutions.

### Features

<b>Digital/Analog:</b>	Analog
<b>Inch-Metric:</b>	Metric
<b>Type:</b>	EN ISO Standard
<b>Range:</b>	0.1 mm
<b>Plunger Stroke:</b>	2 mm
<b>Range per rev.:</b>	0,14 mm
<b>Dial reading:</b>	50-0-50
<b>Delivered:</b>	With certificate of inspection
<b>Graduation:</b>	0.001 mm

<b>MPE any 1/10 revolution:</b>	2 µm
<b>MPE measuring range:</b>	4 µm
<b>H MPE (Hysteresis):</b>	2 µm
<b>R MPE (Repeatability):</b>	1 µm
<b>Measuring force:</b>	0,4-1,5 N
<b>Stem:</b>	8 mm
<b>Contact point:</b>	Carbide tipped, thread: M 2.5 x 0.45 mm
<b>Balanced dial:</b>	Yes
<b>One revolution:</b>	Yes
<b>Shockproof:</b>	Yes
<b>Mass:</b>	75 g

### Dimensions




Technical drawing of a dial indicator stem with dimensions A through I and various diameters. The drawing shows a side view and a detail view of the stem tip. Dimensions are as follows:

- A:** 32,5 mm
- B:** 53.5 mm
- C:** 40 mm
- D:** 15 mm
- E:** 20 mm
- F:** 16.8 mm
- G:** 16.7 mm
- H:** 38 mm
- I:** 6.6 mm

Other dimensions shown in the drawing include:  $\phi 6.5$ ,  $\phi 8_{-0.009}^0$ ,  $\phi 4$ , and M2.5x0.45.

### Accessories

Optional accessories:



**Limit Hands (Green) 2 pcs.**  
Dial Indicator Series 1, Test Indicator  
Art No. 21AAB363  
Price on application



## Bezel Clamp for Dial Gauge

Series 1

Art No. 21RZA149

Price on application

## Spindle Lifting Lever

for S-Type and A-Type Serie 1

Art No. 902100

Price on application



## Spindle Lifting Cable

for Indicator, L=500mm

Art No. 21JZA295

Price on application



## Spindle Lifting Cable with Auto Stop

for Indicator, L=300mm

Art No. 21JZA301

Price on application



## Spare parts

Consumable spares:



**Contact Element Ball Point,  
M2,5x0,45**

7,3mm Length, Carbide, Metric

Art No. 901312

Suggested retail price: 5.00 €\*  

---