

## Universal Protractor

Item number: 187-906-10

### Images



### Description

This universal bevel protector offers you the following benefits:

- Its high-precision angle gauge enables you to take accurate angle measurements of machines, moulds and jigs.
- You can attach it to height gauges.

### Features

<b>Inch-Metric:</b>	Inch
<b>Graduation:</b>	5' (0° - 90° - 0°)
<b>Blade edge angle:</b>	60°, 45° edges
<b>Blade length:</b>	12"
<b>Delivered:</b>	In a box with holder for height gauge, magnifier

### Accessories

Standard accessories:



#### Steel Rule

**150mm/6"**, Metric/Inch

Art No. 187-106

Suggested retail price: 37.00 €\*

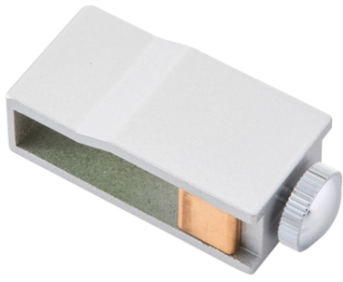


#### Steel Rule

**300mm/12"**, Metric/Inch

Art No. 187-107

Suggested retail price: 49.00 €\*



## Holder for Mounting on Height Gauges

Metric, Series 187  
Art No. 950750  
Suggested retail price: 48.00 €\*  

---



## Acute angle attachment

for Series 187  
Art No. 187-105  
Suggested retail price: 76.00 €\*  

---