

Universal Protractor

Item number: 187-901-10

Images



Description

This universal bevel protector offers you the following benefits:

- Its high-precision angle gauge enables you to take accurate angle measurements of machines, moulds and jigs.
- You can attach it to height gauges.

Features

Inch-Metric:	Metric
Graduation:	5' (0° - 90° - 0°)
Blade edge angle:	60°, 45°, 30° edges
Blade length:	150, 300 mm
Delivered:	In a box with acute angle attachment, holder for height gauge, magnifier
Mass:	390 g

Accessories

Standard accessories:



Steel Rule

150mm/6", Metric/Inch

Art No. 187-106

Suggested retail price: **37.00 €***

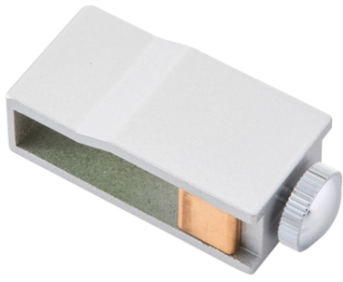


Steel Rule

300mm/12", Metric/Inch

Art No. 187-107

Suggested retail price: **49.00 €***



Holder for Mounting on Height Gauges

Metric, Series 187
Art No. 950750
Suggested retail price: 48.00 €*



Acute angle attachment

for Series 187
Art No. 187-105
Suggested retail price: 76.00 €*
