

## Dial Gauge, Flat Back, ANSI/AGD Type

Item number: 1410AB

### Images



### Description

#### Compact Type, Small Diameter - Inch

This is a compact, inch dial indicator with a bezel  $\varnothing$  40 mm. It offers you the following benefits:

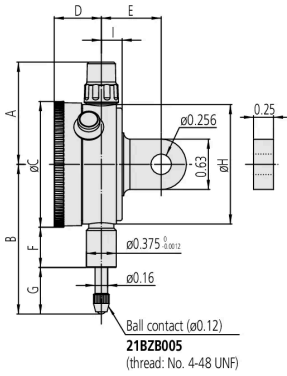
- It is ideal for use in applications where space is limited.
- Green limit markers are a standard accessory.

### Features

<b>Digital/Analog:</b>	Analog
<b>Inch-Metric:</b>	Inch
<b>Delivered:</b>	With certificate of inspection, bezel clamp
<b>Range:</b>	0,25 "
<b>Range per rev.:</b>	0,1"
<b>Dial reading:</b>	0-100
<b>Graduation:</b>	0,001"
<b>H MPE (Hysteresis):</b>	0,0002"
<b>R MPE (Repeatability):</b>	$\pm 0,0002$ "
<b>MPE first one revolution:</b>	$\pm 0,001$ "
<b>MPE first 2 1/2 revolutions:</b>	$\pm 0,001$ "
<b>Type:</b>	ANSI/AGD Standard
<b>Measuring force:</b>	0,4-1,4 N

<b>Mass:</b>	70 g
<b>Stem:</b>	9.52 mm / 0.375"
<b>Contact point:</b>	Carbide tipped, thread: 4-48UNF
<b>Continuous dial:</b>	Yes

## Dimensions



- A:** 1.28 inch
- B:** 1.87 inch
- C:** 1.57 inch
- D:** 0.59 inch
- E:** 3/4 inch
- F:** 0.5 inch
- G:** 0.58 inch
- H:** 1.5 inch
- I:** 0.26 inch

## Accessories

### Optional accessories:



### Limit Hands (Green) 2 pcs.

Dial Indicator Series 1, Test Indicator  
Art No. 21AAB363  
**Price on application**



### Spindle Lifting Lever

for S-Type and A-Type Serie 1  
Art No. 902100  
**Price on application**



### Spindle Lifting Cable

for Indicator, L=500mm  
Art No. 21JZA295  
**Price on application**



## Spindle Lifting Cable with Auto Stop

for Indicator, L=300mm

Art No. 21JZA301

Price on application

### Standard accessories:



## Bezel Clamp for Dial Gauge

Series 1

Art No. 21RZA149

Price on application

### Spare parts

#### Consumable spares:



## Contact Element Ball Point, 4-48UNF

1/4" Length, Carbide, Inch

Art No. 21BZB005

Suggested retail price: 15.00 €\*