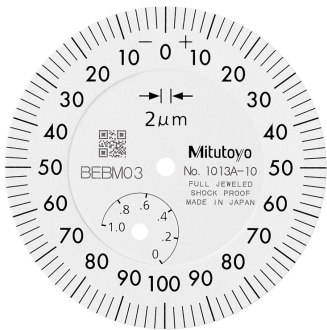


Dial Gauge, Lug Back, ISO Type

Item number: 1013A-10

Images



Description

Compact Type 1 and 3,5 mm Range Small Diameter - Metric

This is a compact, dial indicator with a bezel \varnothing 40 mm. It offers you the following benefits:

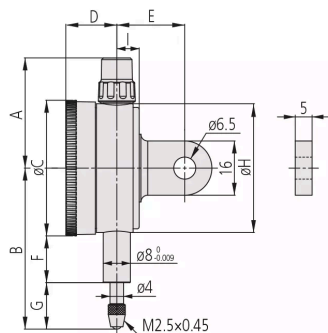
- It is ideal for use in applications where space is limited.

Features

| | |
|------------------------|--------------------------------|
| Digital/Analog: | Analog |
| Inch-Metric: | Metric |
| Range: | 1 mm |
| Range per rev.: | 0,2 mm |
| Dial reading: | 0-100-0 |
| Delivered: | With certificate of inspection |
| Graduation: | 0.002 mm |

| | |
|---------------------------------|---|
| MPE any 1/10 revolution: | 2.5 µm |
| MPE any 1/2 revolution: | 4 µm |
| MPE any 1 revolution: | 4.5 µm |
| MPE measuring range: | 6 µm |
| H MPE (Hysteresis): | 2 µm |
| R MPE (Repeatability): | 1 µm |
| Measuring force: | 0,4-1,5 N |
| Stem: | 8 mm |
| Contact point: | Carbide tipped, thread: M 2.5 x 0.45 mm |
| Balanced dial: | Yes |
| Shockproof: | Yes |
| Type: | EN ISO Standard |
| Mass: | 95 g |

Dimensions



A: 32.5 mm

B: 49 mm

C: 40 mm

D: 15 mm

E: 20 mm

F: 13.8 mm

G: 15.2 mm

H: 38 mm

I: 6.6 mm

Accessories

Optional accessories:



Limit Hands (Green) 2 pcs.

Dial Indicator Series 1, Test Indicator

Art No. 21AAB363

Price on application



Bezel Clamp for Dial Gauge

Series 1

Art No. 21RZA149

Price on application

Spindle Lifting Lever

for S-Type and A-Type Serie 1

Art No. 902100

Price on application



Spindle Lifting Cable

for Indicator, L=500mm

Art No. 21JZA295

Price on application



Spindle Lifting Cable with Auto Stop

for Indicator, L=300mm

Art No. 21JZA301

Price on application



Spare parts

Consumable spares:



**Contact Element Ball Point,
M2,5x0,45**

7,3mm Length, Carbide, Metric

Art No. 901312

Suggested retail price: 5.00 €*
