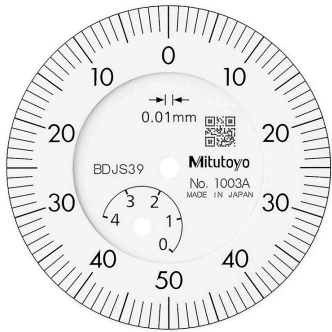
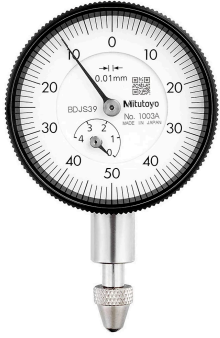


## Dial Gauge, Lug Back, ISO Type

Item number: 1003A

### Images



### Description

#### Compact Type, Extra Small Diameter - Metric

This is a compact, dial indicator with a bezel  $\varnothing$  31 / 36 mm. It offers you the following benefits:

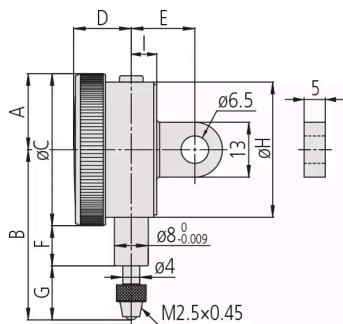
- It is ideal for use in applications where space is limited.

### Features

<b>Digital/Analog:</b>	Analog
<b>Inch-Metric:</b>	Metric
<b>Delivered:</b>	With certificate of inspection
<b>Range:</b>	4 mm
<b>Range per rev.:</b>	1 mm
<b>Dial reading:</b>	0-50-0
<b>Graduation:</b>	0.01 mm

<b>MPE any 1/10 revolution:</b>	6 µm
<b>MPE any 1/2 revolution:</b>	9 µm
<b>MPE any 1 revolution:</b>	10 µm
<b>MPE measuring range:</b>	14 µm
<b>H MPE (Hysteresis):</b>	3.5 µm
<b>R MPE (Repeatability):</b>	3 µm
<b>Measuring force:</b>	0,3-1,4 N
<b>Mass:</b>	51 g
<b>Stem:</b>	8 mm
<b>Contact point:</b>	Carbide tipped, thread: M 2.5 x 0.45 mm
<b>Balanced dial:</b>	Yes
<b>Type:</b>	EN ISO Standard

### Dimensions



- A:** 18 mm
- B:** 40.3 mm
- C:** 36 mm
- D:** 13.5 mm
- E:** 15 mm
- F:** 9.5 mm
- G:** 12.8 mm
- H:** 32 mm
- I:** 6 mm

### Spare parts

Consumable spares:



#### Contact Element Ball Point, M2,5x0,45

8,3mm Length, Metric  
 Art No. 21AZA319  
 Suggested retail price: 17.00 €\*