

ABAT15C 1500VDC max

DC PROTECTION FUSES

SQUARE BODY HIGH SPEED FUSE LINKS DC PROTECTION



Mersen DC offers provide a very high performant protection for DC applications in particular battery container or inverter protection.

ABAT15C fuses have been designed for applications from 1000VDC up to 1500VDC, with current ratings from 500A to 1250A.

This range is compliant with IEC 60269-7, a new standard dedicated for battery protection.

ABAT15C fuses allow them to clear high Max. Interrupting Rating and provide a limited power loss.

This range is CE (manufactured in France) and UL recognized.

For higher current ratings, Mersen proposes different solutions, please consult us.

TECHNICAL DATA OVERVIEW

Rated DC Voltage UN	1000 up to 1500 VDC (L/R≤3ms)
Ampere Range (A)	500 ... 1250 A
Speed/Characteristic	aBat
I.R (DC) @ L/R≤4ms	200 ... 250kA

FEATURES & BENEFITS

- Designed for DC applications
- Dedicated to battery protection
- Fastest of their category
- Compactness
- High Max. Interrupting Rating
- Several terminals can be provided

APPLICATIONS

- Protection of inverters
- Battery container protection
- Battery rack / string protection
- Power Conversion System (PCS) protection
- Protection of Battery Connection Panel (BCP)
- DC Systems protection

STANDARDS

- IEC 60 269-7 (standard for battery protection)
- cURus Recognized -UL 248-13
- IEC 60 269-4 VSI



ABAT15C 1500VDC max

PRODUCT RANGE



ABAT15C550-AIA

ABAT15C with flush ends TTF

Catalog number	Item number	Rated voltage DC	Rated current I _n	Pre-arcing I ² t	Clearing I ² t at Rated Voltage	Max.Interrupting Rating IR @1500VDC, L/R=4ms	Watt Loss @ 0,8 I _n
ABAT15C500-AIA	B1200486	1500 V	500 A	36.5 kA ² s	125 kA ² s	250 kA	91 W
ABAT15C550-AIA	C1200487	1500 V	550 A	50 kA ² s	165 kA ² s	250 kA	94 W
ABAT15C630-AIA	D1200488	1500 V	630 A	84 kA ² s	275 kA ² s	250 kA	96 W
ABAT15C700-AIA	E1200489	1500 V	700 A	110 kA ² s	370 kA ² s	250 kA	102 W
ABAT15C800-AIA	F1200490	1500 V	800 A	159 kA ² s	530 kA ² s	250 kA	109 W
ABAT15C900-AIA	G1200491	1500 V	900 A	231 kA ² s	765 kA ² s	250 kA	110 W
ABAT15C1000-AIB	H1200492	1500 V	1000 A	440 kA ² s	1515 kA ² s	250 kA	91 W
ABAT15C1250-AIA	J1200493	1500 V	1250 A	678 kA ² s	2620 kA ² s	250 kA	125 W



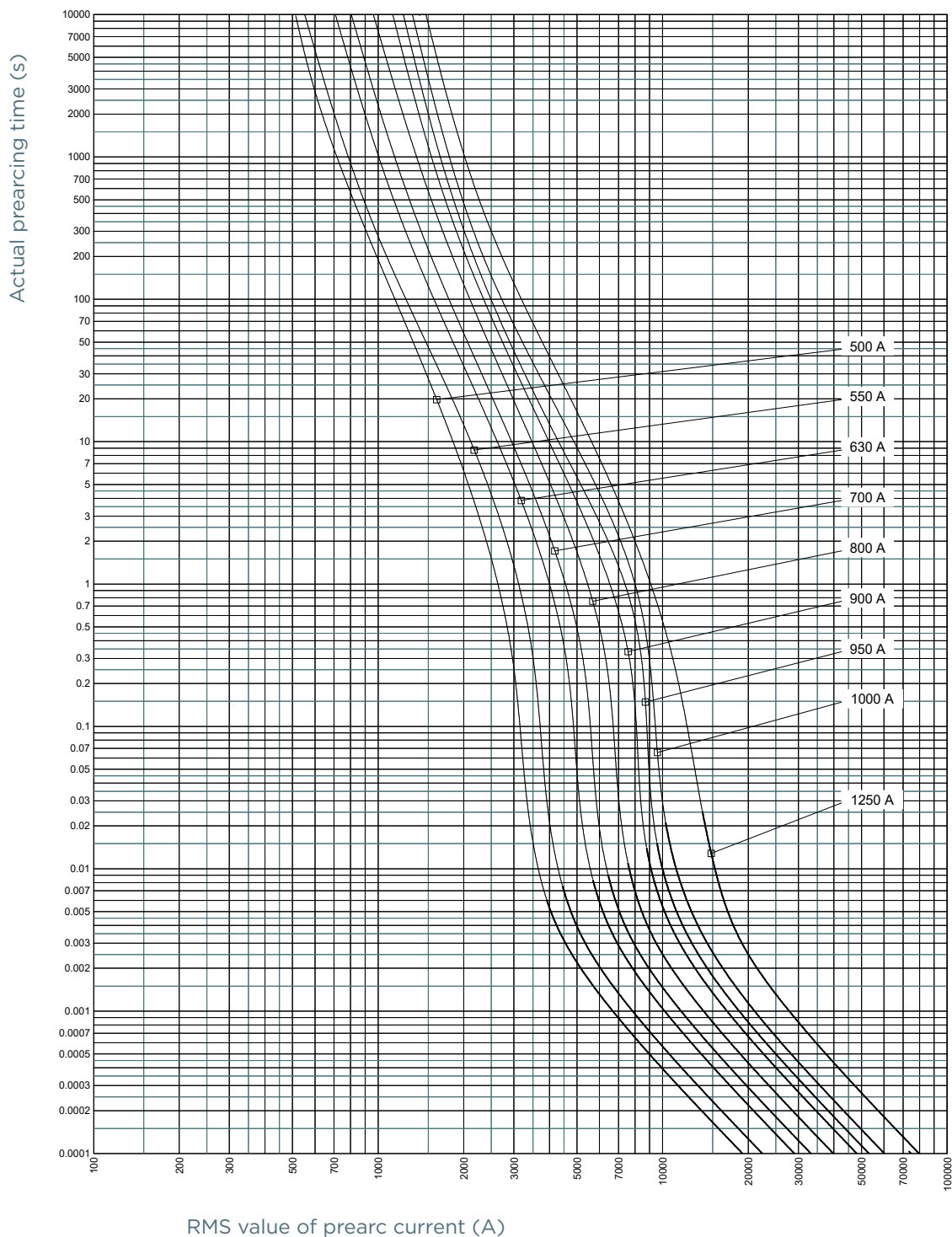
ABAT15C900-LIA

ABAT15C with blades LI

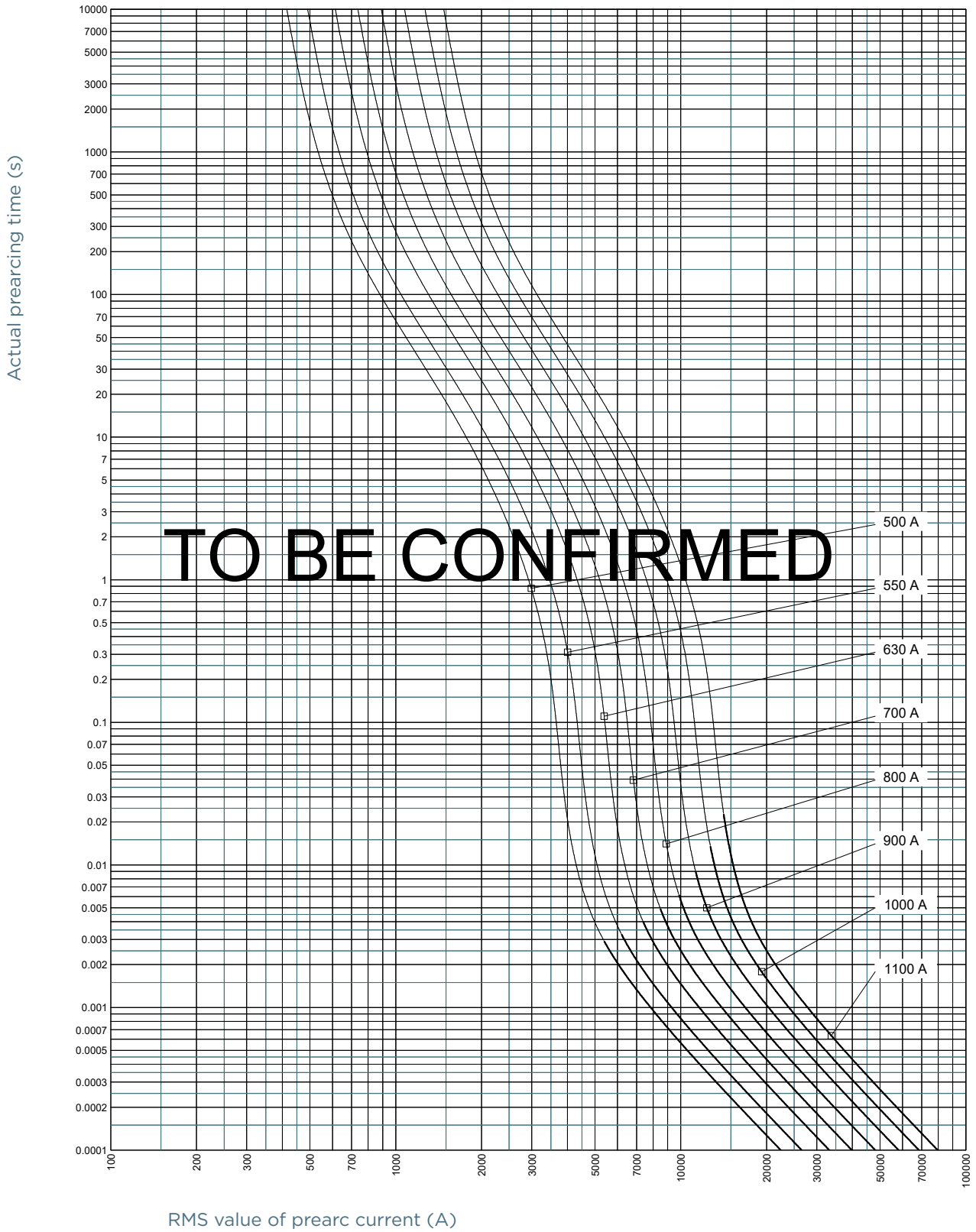
Catalog number	Item number	Rated voltage DC	Rated current I _n	Pre-arcing I ² t	Clearing I ² t at Rated Voltage	Max.Interrupting Rating IR @1500VDC, L/R=4ms	Watt Loss @ 0,8 I _n
ABAT15C500-LIA	E1215715	1500 V	500 A	50 kA ² s	178 kA ² s	200 kA	92 W ¹
ABAT15C550-LIA	G1215717	1500 V	550 A	70 kA ² s	249 kA ² s	200 kA	96 W ¹
ABAT15C630-LIA	H1215718	1500 V	630 A	110 kA ² s	389 kA ² s	200 kA	103 W ¹
ABAT15C700-LIA	M1215722	1500 V	700 A	158 kA ² s	561 kA ² s	200 kA	109 W ¹
ABAT15C800-LIA	N1215723	1500 V	800 A	231 kA ² s	819 kA ² s	200 kA	118 W ¹
ABAT15C900-LIA	P1209629	1500 V	900 A	336 kA ² s	1195 kA ² s	200 kA	120 W ¹
ABAT15C1000-LIA	P1215724	1500 V	1000 A	467 kA ² s	1657 kA ² s	200 kA	127 W ¹
ABAT15C1100-LIA	W1213223	1500 V	1100 A	632 kA ² s	2300 kA ² s	200 kA	143 W ¹

¹ Tests on going : data to be confirmed

TIME CURRENT CHARACTERISTIC CURVES



TIME CURRENT CHARACTERISTIC CURVES

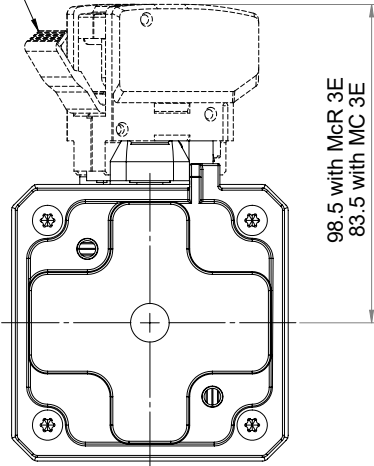


ABAT15C 1500VDC max

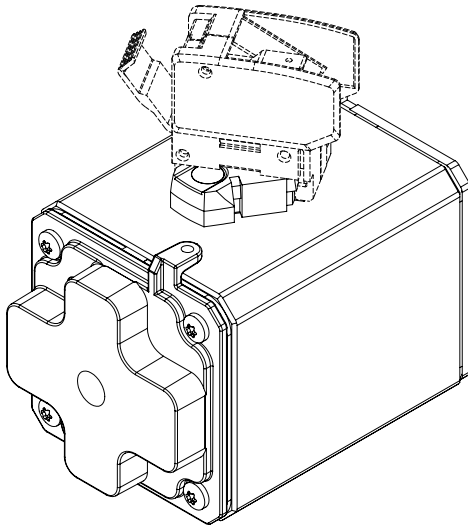
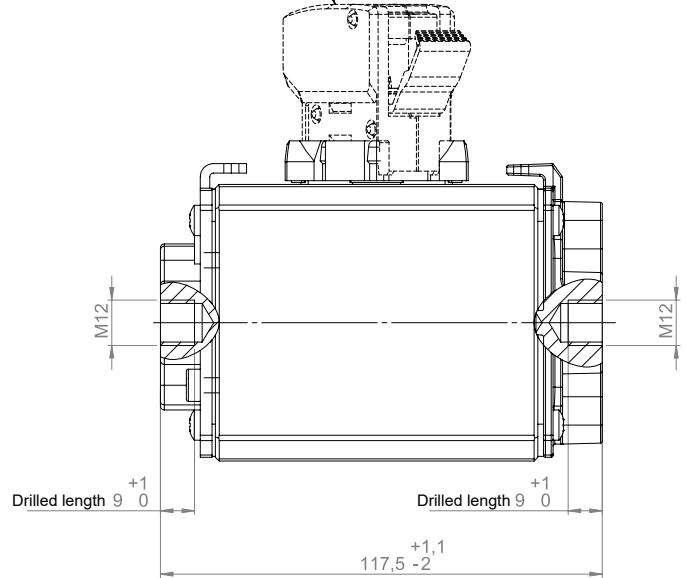
DIMENSIONS

ABAT15C with flush ends TTF

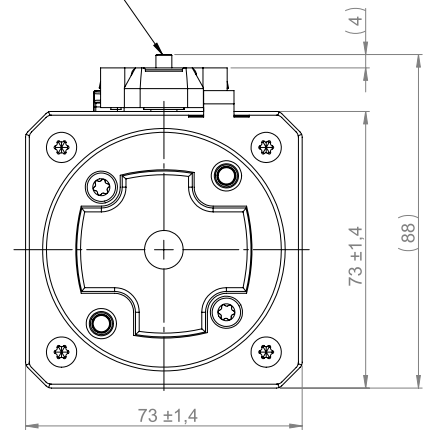
Indicator lever is visible after fuse has operated



Option microswitch



Striker is visible after fuse has operated

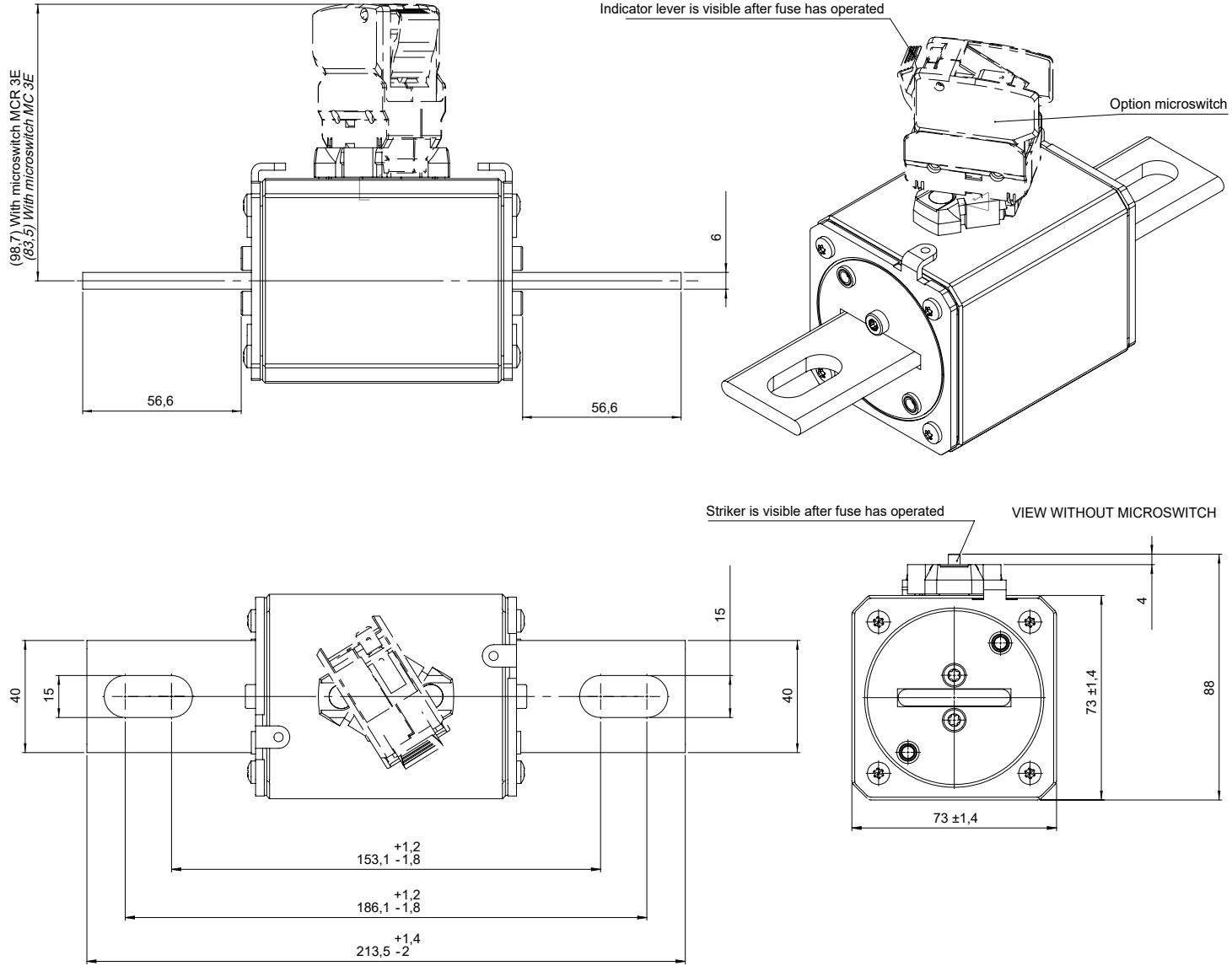


Dimensions in mm

ABAT15C 1500VDC max

DIMENSIONS

ABAT15C with blades LI



Dimensions in mm