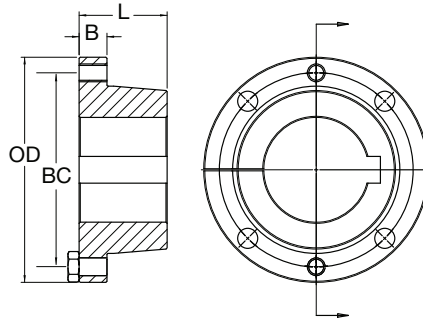


Conveyor Bushings



**QD Short Bushings
& Taper Bushings
also Available.
Please See
General Catalog,
Section B
For More Information.**

Martin's MXT & MXT-STL Bushings are available from stock to fit all popular pulley sizes. Martin stocks both MXT & MXT-STL Bushings in a wide range of bore sizes per hub. Both the MXT & MXT-STL Bushing offers a 2" per foot taper, which reduces end disc pre-stressing, as well as increasing clamping force.

All bushings size 50 and larger feature full depth keys.

MXT™/ MXT-STL™ Bushing Dimensions

| Part Number | | Max. Bore (In.) | Dimensions | | | | Cap Screws | | Wt. Lbs. (Approx) | Standard Stock Bores | | Wrench Torque (Ft./Lbs.) |
|----------------|------------|-----------------|----------------------|------------------|------------------|------------------|------------|---------------|-------------------|--|---|--------------------------|
| Cast / Ductile | Steel | | Length thru Bore (L) | Flange Width (B) | Flange O.D. (OD) | Bolt Circle (BC) | No. | Size | | Stock Bore (Inches) | Keyway* | |
| MXT15 | MXT-STL15 | 1-1/2 | 1-1/8 | 3/8 | 2-7/8 | 2-7/16 | 4 | 1/4 x 1 | 0.7 | 5/8, 3/4, 7/8 1, 1-1/8, 1-3/16, 1-1/4 1-7/16, 1-1/2 | 3/16 x 3/32 1/4 x 1/8 3/8 x 1/8* | 8 |
| MXT20 | MXT-STL20 | 2 | 1-13/32 | 15/32 | 3-3/4 | 3-3/16 | 4 | 5/16 x 1-1/4 | 1.5 | 3/4 1, 1-3/16, 1-1/4 1-7/16, 1-1/2, 1-11/16 1-15/16, 2 | 3/16 x 3/32 1/4 x 1/8 3/8 x 3/16 1/2 x 3/16* | 17 |
| MXT25 | MXT-STL25 | 2-1/2 | 1-7/8 | 5/8 | 4-7/16 | 3-3/4 | 4 | 3/8 x 1-3/4 | 2.6 | 1, 1-3/16, 1-1/4 1-7/16, 1-1/2, 1-11/16 1-15/16, 2, 2-3/16 | 1/4 x 1/8 3/8 x 3/16 1/2 x 1/4 | 29 |
| MXT30 | MXT-STL30 | 3 | 2-1/16 | 11/16 | 5-5/16 | 4-9/16 | 4 | 7/16 x 1-1/2 | 4.2 | 2-7/16 1-7/16, 1-1/2 1-15/16, 2-3/16 2-7/16, 2-1/2, 2-11/16 | 5/8 x 1/8* 3/8 x 3/16 1/2 x 1/4 5/8 x 5/16 | 46 |
| MXT35 | MXT-STL35 | 3-1/2 | 2-15/32 | 25/32 | 6-5/16 | 5-7/16 | 4 | 1/2 x 1-3/4 | 7.4 | 2-15/16 1-15/16, 2-3/16 2-7/16, 2-1/2, 2-11/16 | 3/4 x 3/16* 1/2 x 1/4 5/8 x 5/16 | 70 |
| MXT40 | MXT-STL40 | 4 | 2-13/16 | 7/8 | 7-1/8 | 6-1/8 | 4 | 9/16 x 2 | 10.5 | 2-15/16 3, 3-7/16 2-3/16 2-7/16 | 3/4 x 3/8 7/8 x 5/16* 1/2 x 1/4 5/8 x 5/16 | 100 |
| MXT45 | MXT-STL45 | 4-1/2 | 3-5/16 | 15/16 | 8 | 6-7/8 | 4 | 5/8 x 2-1/4 | 14.8 | 2-15/16 3-7/16, 3-1/2 3-15/16 2-15/16 | 1 x 3/8* 7/8 x 7/16 3/4 x 3/8 | 140 |
| MXT50 | MXT-STL50 | 5 | 3-3/4 | 1 | 10-1/8 | 8-5/16 | 4 | 3/4 x 2-1/2 | 27.8 | 3-7/16 3-15/16, 4-7/16 4-15/16, 5 | 7/8 x 7/16 1 x 1/2 1-1/4 x 5/8 | 250 |
| MXT60 | MXT-STL60 | 6 | 4-1/8 | 1-1/8 | 11-15/16 | 9-7/8 | 4 | 7/8 x 2-1/2 | 42.8 | 4-15/16, 5-7/16, 5-1/2 5-15/16, 6 | 1-1/4 x 5/8 1-1/2 x 3/4 | 400 |
| MXT70 | MXT-STL70 | 7 | 4-11/16 | 1-5/16 | 13-15/16 | 11-9/16 | 4 | 1 x 3 | 66.3 | 6-1/4, 6-7/16, 6-1/2 6-15/16, 7 | 1-1/2 x 3/4 1-3/4 x 3/4 | 600 |
| MXT80 | MXT-STL80 | 8 | 5-1/8 | 1-3/8 | 15-5/8 | 12-7/8 | 4 | 1-1/8 x 3-1/2 | 85.7 | 7-1/4, 7-7/16, 7-1/2 7-15/16, 8 | 1-3/4 x 3/4 2 x 3/4 | 750 |
| MXT100 | MXT-STL100 | 10 | 6-3/16 | 1-9/16 | 17-15/16 | 15-9/16 | 6 | 1-1/8 x 3-1/2 | 146.0 | 8, 8-1/2, 9 9-7/16, 9-1/2, 10 | 2 x 3/4 2-1/2 x 7/8 | 750 |
| MXT120 | MXT-STL120 | 12 | 7-1/16 | 1-3/4 | 20-5/8 | 18-3/16 | 8 | 1-1/8 x 3-1/2 | 216.0 | 10-1/2, 11 11-1/2, 12 | 2-1/2 x 7/8 3 x 1 | 750 |

* Keystock provided for non-standard keyways.