

PRODUCT INFORMATION PACKET

Model No: 449TVFS6543
Catalog No: Y908
300,1800,TEFC,449T(BAR),3/60/2300/4000
Medium And High Voltage NEMA



Regal and Marathon are trademarks of Regal Beloit Corporation or one of its affiliated companies.
©2018 Regal Beloit Corporation, All Rights Reserved. MC017097E

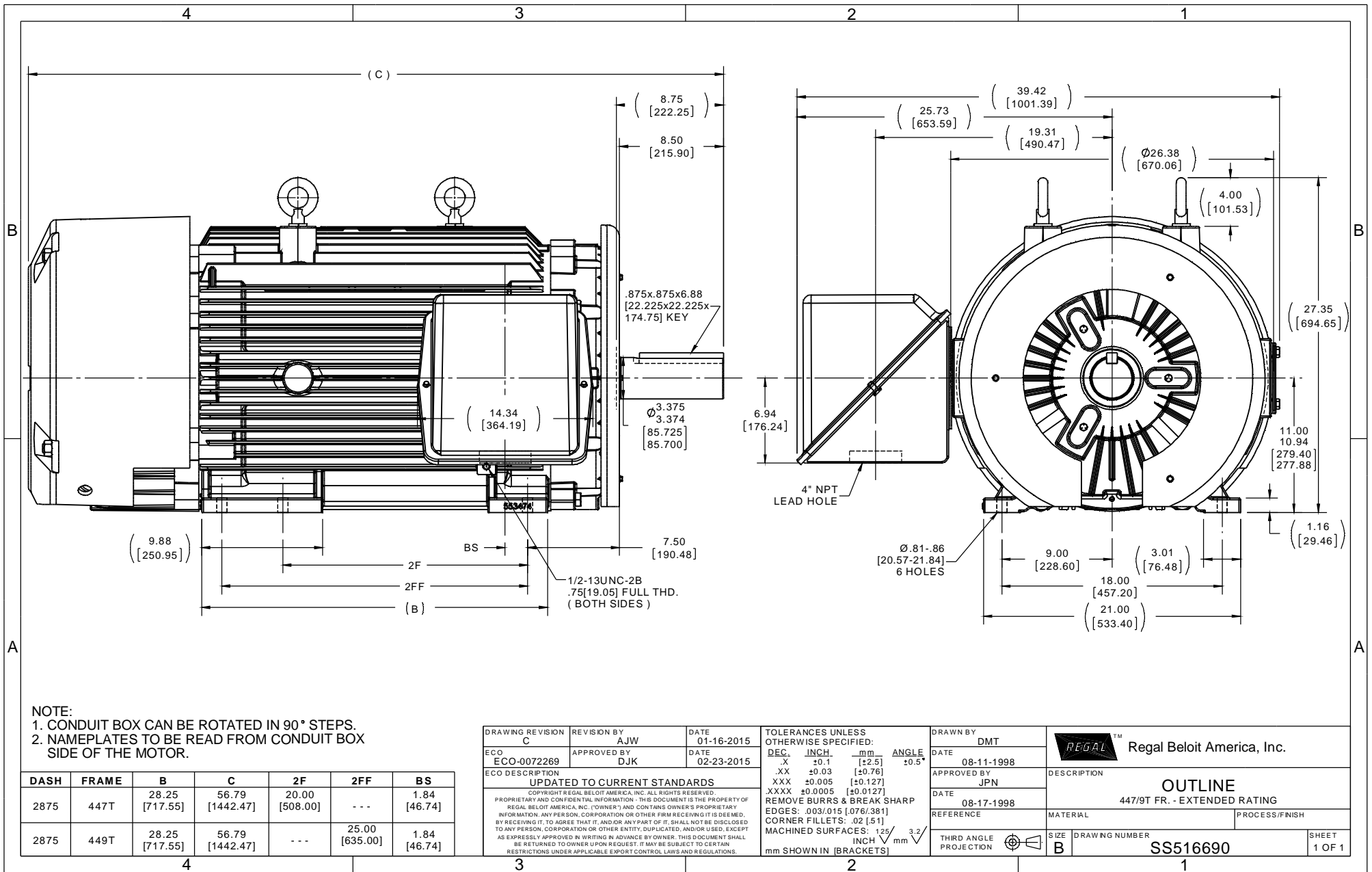


Nameplate Specifications

Output HP	300 Hp	Output KW	224 kW
Frequency	60 Hz	Voltage	2300/4000 V
Current	67/38.5 A	Speed	1788 rpm
Service Factor	1.15	Phase	3
Efficiency	95.8 %	Duty	CONTINUOUS
Insulation Class	H	Design Code	B
KVA Code	G	Frame	447/449T
Enclosure	TEFC	Overload Protector	NOT
Ambient Temperature	40 °C	Drive End Bearing Size	6319
Opp Drive End Bearing Size	6318	UL	No
CSA	N	CE	N
IP Code	54		

Technical Specifications

Electrical Type	SQ CAGE IND RUN	Starting Method	ACROSS THE LINE
Poles	4	Rotation	REV
Mounting	RIGID	Motor Orientation	HORIZONTAL
Drive End Bearing	BALL	Opp Drive End Bearing	BALL
Frame Material	CAST IRON	Shaft Type	T
Overall Length	56.79 in	Frame Length	28.75 in
Shaft Diameter	3.38 in	Shaft Extension	8.75 in
Assembly/Box Mounting	F1/F2 CAPABLE		
Outline Drawing	B-SS516690-2875	Connection Diagram	A-EE7304



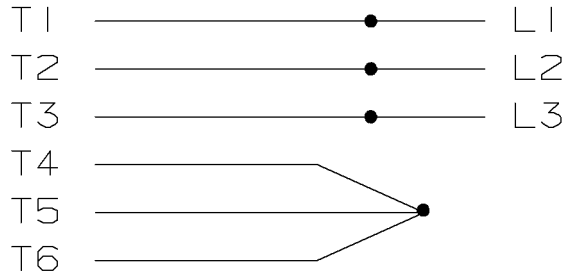
NOTE:
 1. CONDUIT BOX CAN BE ROTATED IN 90° STEPS.
 2. NAMEPLATES TO BE READ FROM CONDUIT BOX SIDE OF THE MOTOR.

DASH	FRAME	B	C	2F	2FF	BS
2875	447T	28.25 [717.55]	56.79 [1442.47]	20.00 [508.00]	---	1.84 [46.74]
2875	449T	28.25 [717.55]	56.79 [1442.47]	---	25.00 [635.00]	1.84 [46.74]

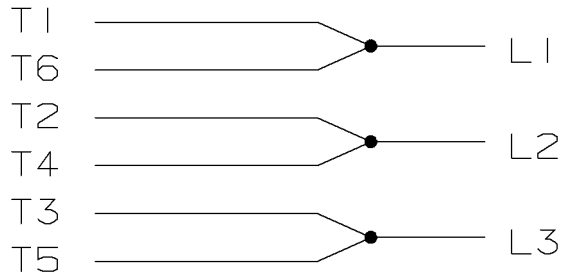
DRAWING REVISION	REVISION BY	DATE	TOLERANCES UNLESS OTHERWISE SPECIFIED:
C	AJW	01-16-2015	DEC. INCH. mm ANGLE
ECO-0072269	DJK	02-23-2015	.X ±0.1 [±2.5] ±0.5°
ECO DESCRIPTION			.XX ±0.03 [±0.76]
UPDATED TO CURRENT STANDARDS			.XXX ±0.005 [±0.127]
COPYRIGHT REGAL BELOIT AMERICA, INC. ALL RIGHTS RESERVED.			XXXX ±0.0005 [±0.0127]
PROPRIETARY AND CONFIDENTIAL INFORMATION - THIS DOCUMENT IS THE PROPERTY OF REGAL BELOIT AMERICA, INC. (OWNER) AND CONTAINS OWNER'S PROPRIETARY INFORMATION. ANY PERSON, CORPORATION OR OTHER FIRM RECEIVING IT IS DEEMED, BY RECEIVING IT, TO AGREE THAT IT, AND/OR ANY PART OF IT, SHALL NOT BE DISCLOSED TO ANY PERSON, CORPORATION OR OTHER ENTITY, DUPLICATED, AND/OR USED, EXCEPT AS EXPRESSLY APPROVED IN WRITING IN ADVANCE BY OWNER. THIS DOCUMENT SHALL BE RETURNED TO OWNER UPON REQUEST. IT MAY BE SUBJECT TO CERTAIN RESTRICTIONS UNDER APPLICABLE EXPORT CONTROL LAWS AND REGULATIONS.			REMOVE BURRS & BREAK SHARP
			EDGES: .003/.015 [0.076/.381]
			CORNER FILLETS: .02 [51]
			MACHINED SURFACES: 125/INCH mm 3.2
			mm SHOWN IN [BRACKETS]

DRAWN BY	DATE	APPROVED BY	DATE	DESCRIPTION
DMT	08-11-1998	JPN	08-17-1998	OUTLINE
REGAL™ Regal Beloit America, Inc.		447/9T FR. - EXTENDED RATING		
THIRD ANGLE PROJECTION	SIZE B	DRAWING NUMBER	SS516690	PROCESS/FINISH

HIGH VOLTAGE
"Y" CONNECTION

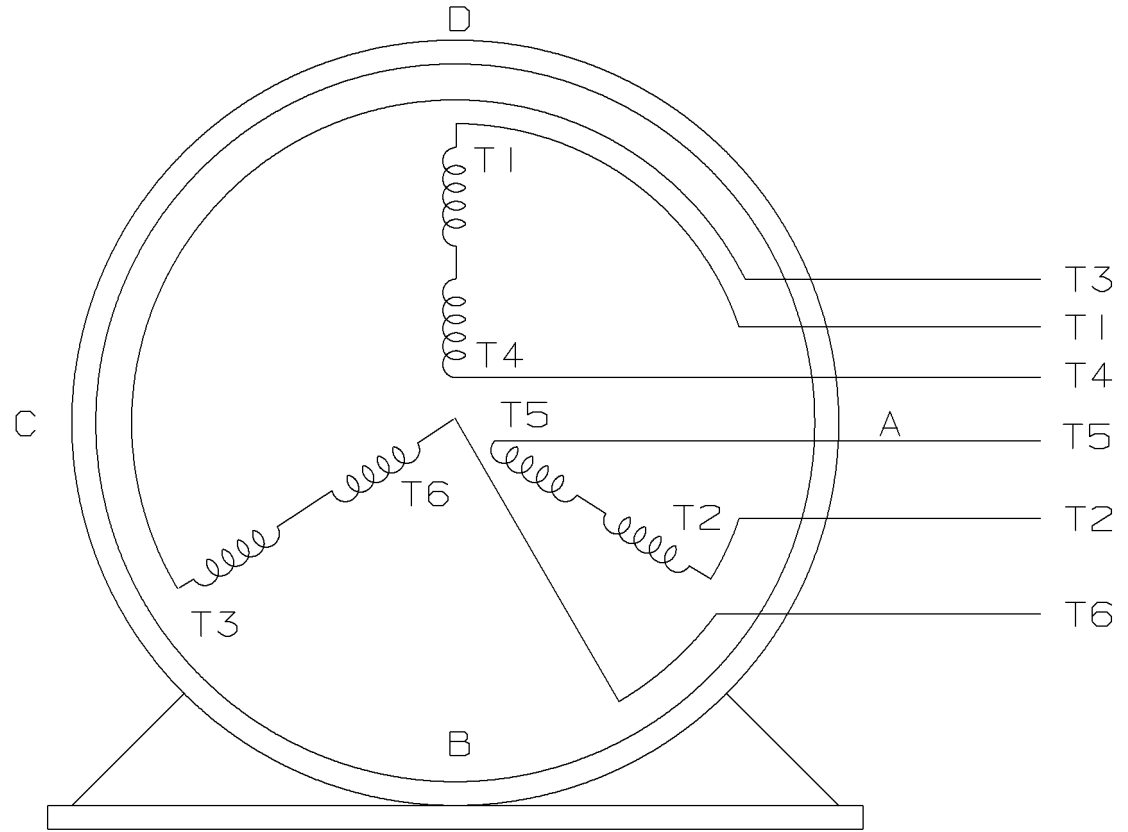


LOW VOLTAGE - DELTA




THREE PHASE - DUAL VOLTAGE

A- EE7304



VIEW OF TERMINAL END

T2DL
T2C
T4CC
T4AY
T4AZ
WP =T4J1

				✓ MAX. SURFACE ROUGHNESS UNLESS NOTED OTHERWISE	UNLESS OTHERWISE SPECIFIED DIMENSIONS ARE IN INCHES TOL. ON XX± .02 XXX± .005 XXXX± .0005 ANGLES± 7'30"		
				MATL SPEC		DRAWN BY LZ	01-04-1994
				FINISH		CHKD BY ML	01-18-1994
9	01-24-1994	REDRAWN ON CADD	LZ	REFERENCE DRW.	WAUSAU, WISCONSIN 54401	APPD BY GK	01-18-1994
REV	DATE	CHANGE	NAME	PART NAME CONNECTION DIAGRAM THREE PHASE, DUAL VOLTAGE			DRWG NO A- EE7304

SHOP BOOK

PURCHASED

DISTRIBUTION - WA - LB - WP - LM - BR

CADD FILE NO.

EE7304

Data Sheet

4491VFS6543



Submittal
Data @ 4000 V

Date: 6/20/2017

Customer:
Attention:
Submitted by: FAREEDA DUDEKULA

Motor Load Data

Load	0%	25%	50%	75%	100%	115%	125%	LR
Current (Amps)	11.5	15.0	21.6	29.6	38.5	44.3	48.0	253
Torque (ft-lb)	0.00	220	440	660	882	1,015	1,105	1,025
RPM	1800	1798	1795	1790	1788	1,796	1784	0
Efficiency (%)		90.2	94.5	95.4	95.8	95.8	95.4	
P.F. (%)	7.0	59.0	79.0	85.5	87.5	88.0	88.0	19.0

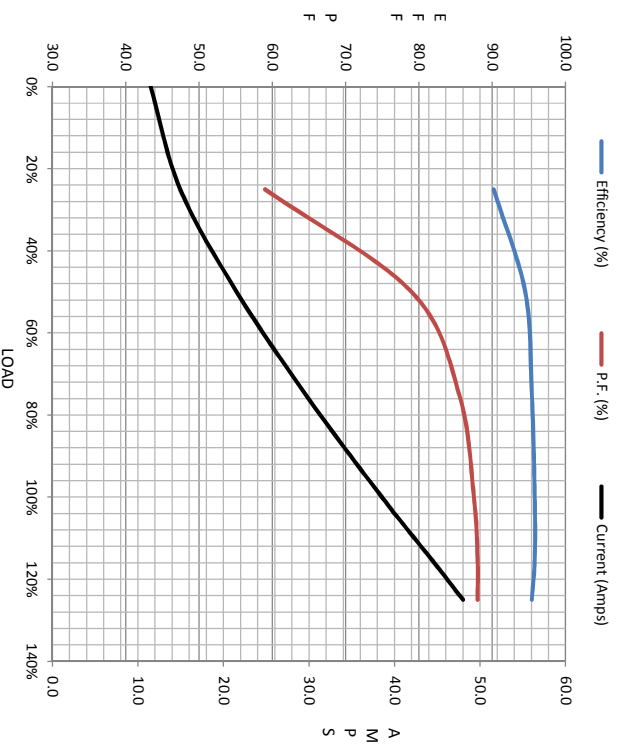
Motor Speed Data

	LR	Pull-Up	BD	Rated	Idle
Speed (rpm)	0	900	1750	1788	1800
Current (Amps)	253	230	144	38.5	11.5
Torque (ft-lb)	1,025	900	2,400	882	0.00

Information Block

HP	300.0
Sync. RPM	1800
Frame	449
Enclosure	TEFC
Construction	TFN
Voltage	2300/4000 V
Frequency	60 Hz
Design	A
LR Code letter	G
Service Factor	1.15
Temp Rise @ FL	75 °C
Duty	CONT
Ambient	40 °C
Elevation	1,000 feet
Rotor/Shaft wkt	125 Lb-Fe
Rel Wdg	V4494106 NONE
Sound Pressure @ 1M	88 dBA
VFD Rating	NONE
Outline Dwg	B-SS516690-2875
Conn. Diag	A-EE7304
Additional Specifications:	
0	
0	

EQUIV CKT (OHMS / PHASE)				
R1	R2	X1	X2	Xm
0.5920	0.4640	6.2100	9.4940	198.4360



Speed - Torque Curve

