

PRODUCT INFORMATION PACKET

Model No: 324THFPA8086
Catalog No: Y583
25,1200,TEBC,324T,3/60/230/460
2000:1 With Encoder Provision



Regal and Marathon are trademarks of Regal Beloit Corporation or one of its affiliated companies.
©2018 Regal Beloit Corporation, All Rights Reserved. MC017097E



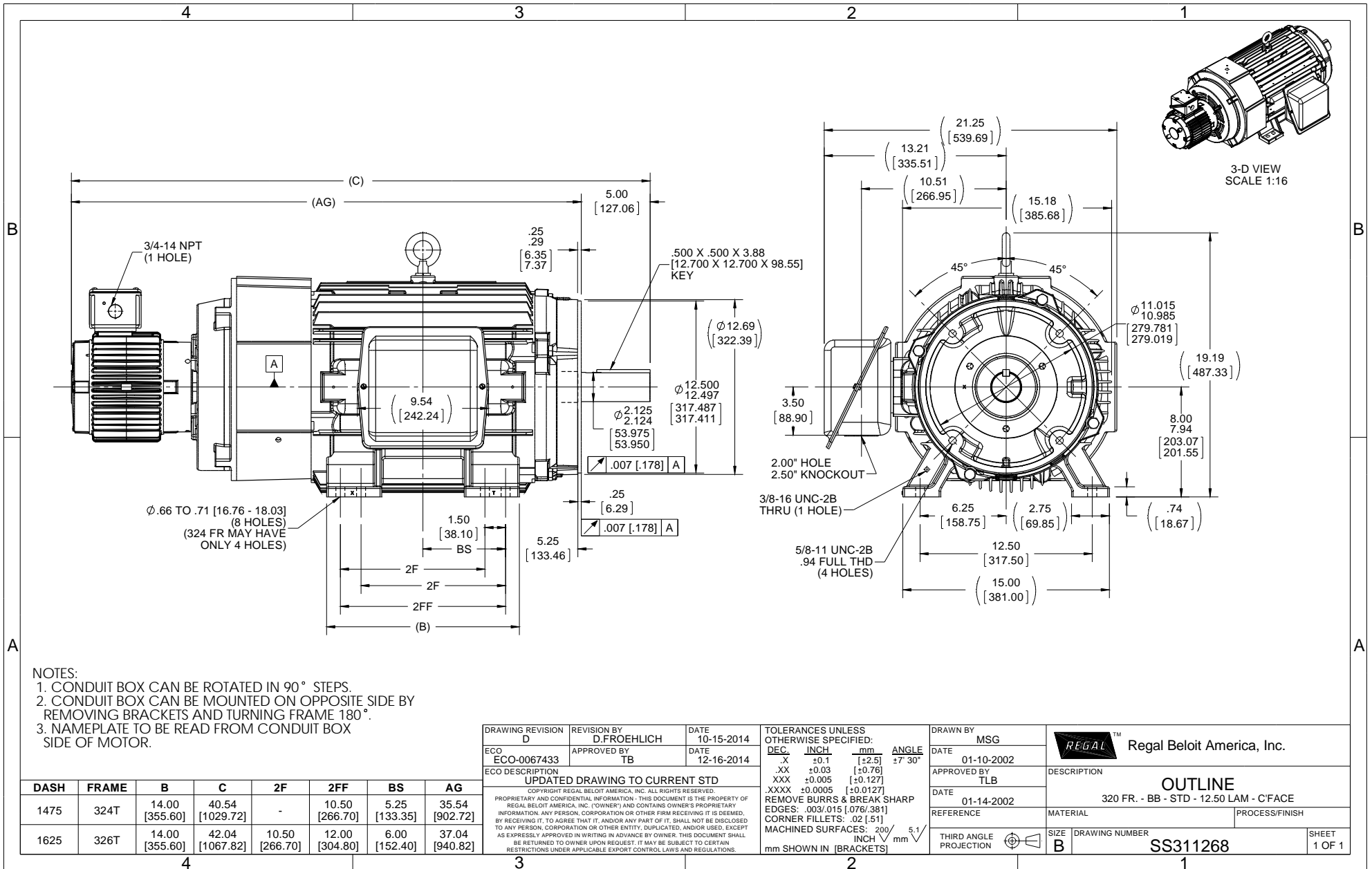


Nameplate Specifications

Output HP	25 Hp	Output KW	18.7 kW
Frequency	60 Hz	Voltage	230/460 V
Current	67/33.5 A	Speed	1170 rpm
Service Factor	1	Phase	3
Efficiency	91.7 %	Duty	CONTINUOUS
Insulation Class	H	Design Code	INV
KVA Code	F	Frame	324TC
Enclosure	TEBC-AXIAL	Overload Protector	NOT
Ambient Temperature	40 °C	Drive End Bearing Size	6312
Opp Drive End Bearing Size	6311	UL	Recognized
CSA	Y	CE	Y
IP Code	43		

Technical Specifications

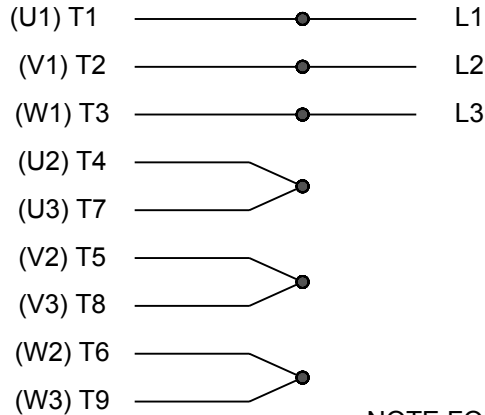
Electrical Type	SQ CAGE INV DUTY	Starting Method	INVERTER ONLY
Poles	6	Rotation	REV
Mounting	RIGID	Motor Orientation	HORIZONTAL
Drive End Bearing	BALL	Opp Drive End Bearing	BALL
Frame Material	CAST IRON	Shaft Type	T
Overall Length	40.54 in	Frame Length	14.75 in
Shaft Diameter	2.13 in	Shaft Extension	5 in
Assembly/Box Mounting	F1/F2 CAPABLE		
Outline Drawing	B-SS311268-1475	Connection Diagram	A-EE7308T



- NOTES:
 1. CONDUIT BOX CAN BE ROTATED IN 90° STEPS.
 2. CONDUIT BOX CAN BE MOUNTED ON OPPOSITE SIDE BY REMOVING BRACKETS AND TURNING FRAME 180°.
 3. NAMEPLATE TO BE READ FROM CONDUIT BOX SIDE OF MOTOR.

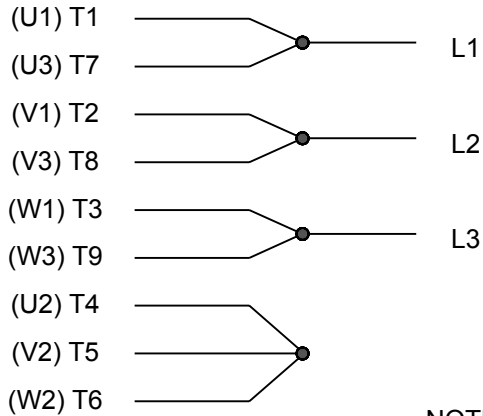
DRAWING REVISION D	REVISION BY D.FROEHLICH	DATE 10-15-2014	TOLERANCES UNLESS OTHERWISE SPECIFIED: DEC. INCH mm ANGLE .X ±0.1 [±2.5] ±7 30° .XX ±0.03 [±0.76] XXX ±0.005 [±0.127] XXXX ±0.0005 [±0.0127]	DRAWN BY MSG	Regal Beloit America, Inc.					
ECO ECO-0067433	APPROVED BY TB	DATE 12-16-2014	REMOVE BURRS & BREAK SHARP EDGES: .003/.015 [076/381] CORNER FILLETS: .02 [51] MACHINED SURFACES: 200/ 5.1 mm SHOWN IN [BRACKETS] INCH/mm	DATE 01-10-2002						
ECO DESCRIPTION UPDATED DRAWING TO CURRENT STD COPYRIGHT REGAL BELOIT AMERICA, INC. ALL RIGHTS RESERVED. PROPRIETARY AND CONFIDENTIAL INFORMATION - THIS DOCUMENT IS THE PROPERTY OF REGAL BELOIT AMERICA, INC. ("OWNER") AND CONTAINS OWNER'S PROPRIETARY INFORMATION. ANY PERSON, CORPORATION OR OTHER FIRM RECEIVING IT IS DEEMED, BY RECEIVING IT, TO AGREE THAT IT, AND/OR ANY PART OF IT, SHALL NOT BE DISCLOSED TO ANY PERSON, CORPORATION OR OTHER ENTITY, DUPLICATED, AND/OR USED, EXCEPT AS EXPRESSLY APPROVED IN WRITING IN ADVANCE BY OWNER. THIS DOCUMENT SHALL BE RETURNED TO OWNER UPON REQUEST. IT MAY BE SUBJECT TO CERTAIN RESTRICTIONS UNDER APPLICABLE EXPORT CONTROL LAWS AND REGULATIONS.				APPROVED BY TLB	DESCRIPTION OUTLINE 320 FR. - BB - STD - 12.50 LAM - C'FACE					
DASH	FRAME	B	C	2F	2FF	BS	AG	REFERENCE	MATERIAL	PROCESS/FINISH
1475	324T	14.00 [355.60]	40.54 [1029.72]	-	10.50 [266.70]	5.25 [133.35]	35.54 [902.72]			
1625	326T	14.00 [355.60]	42.04 [1067.82]	10.50 [266.70]	12.00 [304.80]	6.00 [152.40]	37.04 [940.82]			

HIGH VOLTAGE



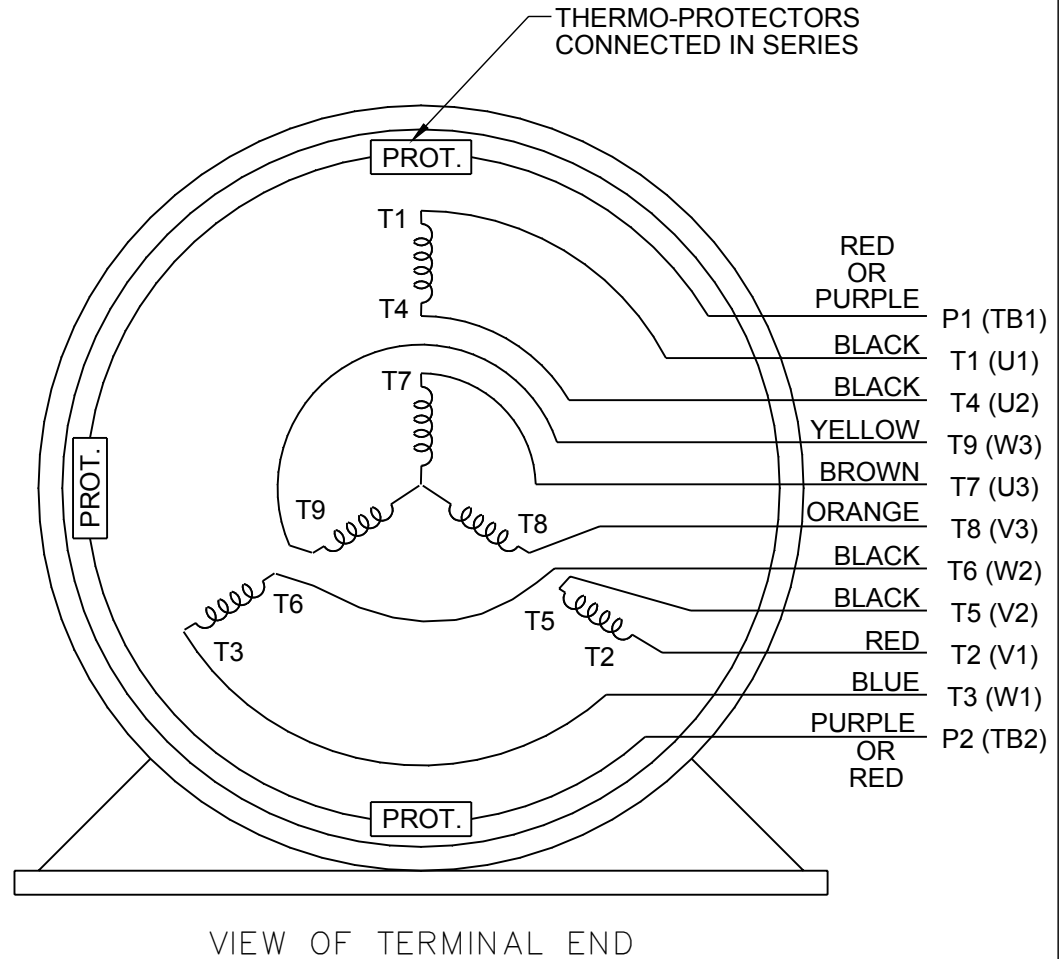
**NOTE FOR FACTORY USE ONLY:
 TO SURGE TEST FOR COMMON CONNECT:
 HIGH VOLT: CONNECT P1 TO T1
 THEN P2 TO L1
 LOW VOLT: CONNECT P1 TO T1 & T7,
 THEN P2 TO L1**

LOW VOLTAGE



NOTE: LEAD'S COLOR CAN BE YELLOW OR WHITE FOR MT2 PLANT

THREE PHASE DUAL VOLTAGE MOTOR



DRAWING REVISION R	REVISION BY AJW	DATE 07-17-2015		DRAWN BY SMC	Regal Beloit America, Inc.
ECO ECO-0081632	APPROVED BY T. VUE	DATE 07-17-2015		DATE 05-13-1992	
ECO DESCRIPTION REV'D IEC NOTATIONS PER IEC 60034-8				APPROVED BY TB	DESCRIPTION CONN DIAGRAM-INTERNAL
<small>COPYRIGHT REGAL BELOIT AMERICA, INC. ALL RIGHTS RESERVED. PROPRIETARY AND CONFIDENTIAL INFORMATION - THIS DOCUMENT IS THE PROPERTY OF REGAL BELOIT AMERICA, INC. ("OWNER") AND CONTAINS OWNER'S PROPRIETARY INFORMATION. ANY PERSON, CORPORATION OR OTHER FIRM RECEIVING IT IS DEEMED, BY RECEIVING IT, TO AGREE THAT IT, AND/OR ANY PART OF IT, SHALL NOT BE DISCLOSED TO ANY PERSON, CORPORATION OR OTHER ENTITY, DUPLICATED, AND/OR USED, EXCEPT AS EXPRESSLY APPROVED IN WRITING IN ADVANCE BY OWNER. THIS DOCUMENT SHALL BE RETURNED TO OWNER UPON REQUEST. IT MAY BE SUBJECT TO CERTAIN RESTRICTIONS UNDER APPLICABLE EXPORT CONTROL LAWS AND REGULATIONS.</small>				DATE 05-13-1992	3 PHASE - DUAL VOLTAGE MOTOR
			REFERENCE EE7308/EE7300	MATERIAL	PROCESS/FINISH
			THIRD ANGLE PROJECTION	SIZE A	DRAWING NUMBER EE7308T

NONE	NONE	
- FT-LB	NONE V	NONE Hz

DATE: 06/21/2017 03:24:11 AM
FORM 3531 REV.3 02/07/99
** Subject to change without notice.

Data Sheet

324TFFPA8086



Submittal
Data @ 460 V

Date: 6/29/2017

Customer:
Attention:
Submitted by: FAREEDA DUDEKULA

Motor Load Data

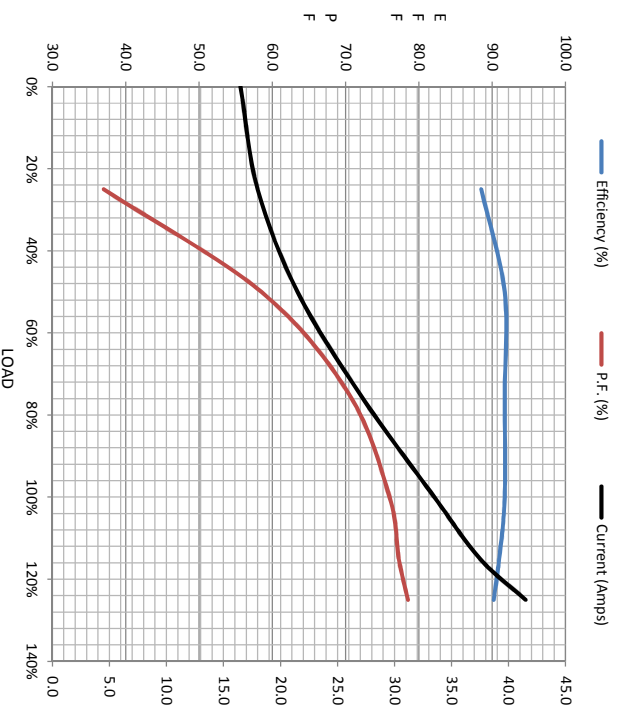
Load	0%	25%	50%	75%	100%	115%	125%	LR
Current (Amps)	16.5	18.0	21.5	27.0	33.5	37.5	41.5	175
Torque (ft-lb)	0.00	27.5	55.0	84.0	112	127	142	180
RPM	1200	1195	1185	1175	1170	1,166	1160	0
Efficiency (%)		88.5	91.7	91.7	91.7	91.0	90.2	
P.F. (%)	4.0	37.0	58.5	70.5	76.0	77.3	78.5	37.0

Motor Speed Data

	LR	Pull-Up	BD	Rated	Idle
Speed (rpm)	0	600	1050	1170	1200
Current (Amps)	175	160	115	33.5	16.5
Torque (ft-lb)	180	160	280	112	0.00

Information Block

HP	25.0			
Sync. RPM	1200			
Frame	324			
Enclosure	TEBC			
Construction	TBP			
Voltage	230/460 V			
Frequency	60 Hz			
Design	B			
LR Code letter	F			
Service Factor	1.15			
Temp Rise @ FL	60 °C			
Duty	CONT			
Ambient	40 °C			
Elevation	1,000 feet			
Rotor/Shaft wkt	4.8 Lb-Fe			
Rel Wdg	286885 F			
Sound Pressure @ 1M	75 dBA			
VFD Rating	CONSTANT 2000-1			
Outline Dwg	B-SS311268-1475			
Conn. Diag	A-EE7308T			
Additional Specifications:				
0				
EQUIV CKT (OHMS / PHASE)				
R1	R2	X1	X2	Xm
0.3430	0.2190	0.8550	0.5940	20.6340



Speed - Torque Curve

