

# Black Max<sup>®</sup> Vector Duty Motors

\*\*\* 230/460V and 575V Motors Available \*\*\*



## Features

- Class F MAX GUARD<sup>®</sup> insulation system
- Constant torque operation from 0 to base speed on vector drive
- Constant horsepower operation to twice base RPM
- Continuous duty at 40° C ambient
- Optimized for operation with IGBT inverter (NEMA Design A)
- Class F N/C thermostats (one per phase)
- Utilizes double shielded ball bearings
- Exxon Polyrex<sup>®</sup> EM bearing grease
- C-Face with rigid base, except C-Face with removable rigid base as noted
- F1 standard conduit box location, field reversible to F2 (except as noted)
- Available with optional encoder installed on opposite drive end
- Electrically reversible
- UL Recognized, CSA Certified, and CE Mark
- Three year warranty (through Marathon Electric)

## Applications

- Designed for inverter or vector applications where up to a 1000:1 constant torque speed range is required.
- Typical uses include: material handling, machine tools, conveyors, crane and hoist, metal processing, test stands, pumps, compressors, textile processing, and other industrial machinery installed in dusty or dirty environments.

### Motor Shipping Schedule \*

Same or one day \*    Up to 7 days    Up to 10 days

Color indicates shipping lead time in business days. Check stock status online.

\* Certain heavy and oversized items can be shipped only via LTL. Check our website for current shipping method constraints by part number.

## 230/460V Motor Specifications

Part Number *	Price	HP	Base RPM	Volts	Enclosure	NEMA Frame	Model No.	F.L. Amps	Weight (lb) *	Footnotes	Drawing Links
Y592	\$476.00	1/4	1800	230/460	TENV	56C	56H17T2001	1.2 / 0.6	19	T, S, 13	<a href="#">PDF</a>
Y534	\$602.00	1/2	1800	230/460	TENV	56C	56H17T5301	1.6 / 0.8	28	T, S, 6, 13	<a href="#">PDF</a>
Y535	\$718.00	1	1800	230/460	TENV	56C	56H17T5302	3.0 / 1.5	41	T, S, 6, 13	<a href="#">PDF</a>
Y536	\$738.00	1	1800	230/460	TENV	143TC	143THTR5326	3.0 / 1.5	43	T, S, 6, 13	<a href="#">PDF</a>
Y537	\$854.00	1	1200	230/460	TENV	145TC	145THTR5376	3.8 / 1.9	49	T, S, 6, 13	<a href="#">PDF</a>
Y538	\$896.00	1-1/2	1800	230/460	TENV	145TC	145THTR5326	4.8 / 2.4	50	T, S, 6, 13	<a href="#">PDF</a>
Y551	\$1,237.00	2	1800	230/460	TENV	145TC	145HTN6046	6.0 / 3.0	72	T, CI	<a href="#">PDF</a>
Y540	\$1,675.00	2	1200	230/460	TENV	184TC	184HTL7776	6.6 / 3.3	88	T, AL	<a href="#">PDF</a>
Y541A	\$1,478.00	3	1800	230/460	TENV	182TC	182HTY7726	8.2 / 4.1	110	T, AL	<a href="#">PDF</a>
Y542	\$2,062.00	3	1200	230/460	TENV	213TC	213HTL7776	9.4 / 4.7	118	T, AL	<a href="#">PDF</a>
Y543A	\$1,768.00	5	1800	230/460	TENV	184TC	184HTY7726	13.4 / 6.7	125	T, AL	<a href="#">PDF</a>
Y544	\$2,510.00	5	1200	230/460	TENV	215TC	215HTL7776	15.4 / 7.7	138	T, AL	<a href="#">PDF</a>
Y545	\$2,276.00	7-1/2	1800	230/460	TENV	213TC	213HTL7726	21.0 / 10.5	146	T, AL	<a href="#">PDF</a>
Y546	\$3,375.00	7-1/2	1200	230/460	TENV	254TC	254HTL5776	22.0 / 11.0	209	T, AL	<a href="#">PDF</a>
Y547	\$2,722.00	10	1800	230/460	TENV	215TC	215HTL7726	27.0 / 13.5	159	T, AL	<a href="#">PDF</a>
Y548	\$3,821.00	10	1200	230/460	TENV	256TC	256HTL5776	28 / 14	203	T, AL	<a href="#">PDF</a>
Y549	\$3,236.00	15	1800	230/460	TENV	254TC	254HTL5726	40 / 20	250	T, AL, I	<a href="#">PDF</a>
Y552	\$4,727.00	20	1800	230/460	TENV	256TC	256HTNA7026	52 / 26	300	T, I, CI	<a href="#">PDF</a>
Y553	\$5,141.00	25	1800	230/460	TENV	284TC	284HTNA7026	62 / 31	495	T, I, CI	<a href="#">PDF</a>
Y393	\$5,796.00	30	1800	230/460	TENV	286TC	286HTNA7026	74 / 37	575	T, I, CI	<a href="#">PDF</a>

\* Refer to the Motor Shipping Schedule table for shipping information.

Footnotes:

- 6 Bolt-on, removable base for footless mounting option
- 13 F1 Mounting Only, cannot modify to F2
- AL Aluminum Frame Construction

Footnotes (continued):

- CI Cast-iron Frame Construction
- I Intermittent duty from 90-120 Hz operation
- S Steel Frame Construction

Footnotes (continued):

- T Thermostat overload

Note: Please review the AutomationDirect Terms & Conditions for warranty and service on his product.

Warranty service can be arranged through numerous Marathon Electric service centers. See list of service centers on our Web site at [www.AutomationDirect.com](http://www.AutomationDirect.com).

# Black Max<sup>®</sup> Vector Duty Motors

Motor Shipping Schedule *		
Same or one day *	Up to 7 days	Up to 10 days

Color indicates shipping lead time in business days. Check stock status online.

\* Certain heavy and oversized items can be shipped only via LTL. Check our website for current shipping method constraints by part number.

575V Motor Specifications											
Part Number	Price	HP	Base RPM	Volts	Enclosure	NEMA Frame	Model No.	F.L. Amps	Weight (lb)	Footnotes	Drawing Links
<b>Y555</b>	\$602.00	1/2	1800	575	TENV	56C	56H17T5311	0.64	28	T, S, 6, 13	<a href="#">PDF</a>
<b>Y556</b>	\$718.00	1	1800	575	TENV	56C	56H17T5312	1.2	41	T, S, 6, 13	<a href="#">PDF</a>
<b>Y557</b>	\$1,237.00	2	1800	575	TENV	145TC	145THTN6060	2.4	72	T, CI	<a href="#">PDF</a>
<b>Y558A</b>	\$1,451.00	3	1800	575	TENV	182TC	182THTY7736	3.3	110	T, AL	<a href="#">PDF</a>
<b>Y559A</b>	\$1,734.00	5	1800	575	TENV	184TC	184THTY7736	5.4	125	T, AL	<a href="#">PDF</a>
<b>Y560</b>	\$2,276.00	7-1/2	1800	575	TENV	213TC	213THTL7736	8.4	146	T, AL	<a href="#">PDF</a>
<b>Y561</b>	\$2,722.00	10	1800	575	TENV	215TC	215THTL7736	10.8	159	T, AL	<a href="#">PDF</a>
<b>Y562</b>	Retired	15	1800	575	TENV	254TC	254THTL5736	16.0	250	T, AL, I	<a href="#">PDF</a>
<b>Y563</b>	Retired	20	1800	575	TENV	256TC	256THTNA7036	20.8	300	T, CI, I	<a href="#">PDF</a>

**Footnotes:**

- 6 Bolt-on, removable base for footless mounting option
- 13 F1 Mounting Only, cannot modify to F2
- AL Aluminum Frame Construction

**Footnotes (continued):**

- CI Cast-iron Frame Construction
- I Intermittent duty from 90-120 Hz operation
- S Steel Frame Construction
- T Thermostat overload

Note: Please review the AutomationDirect Terms & Conditions for warranty and service on this product. Warranty service can be arranged through numerous Marathon Electric service centers. See list of service centers on our Web site at [www.AutomationDirect.com](http://www.AutomationDirect.com).

## Motor with Shaft-Mounted Encoder\*

A Dynapar Model HS35 shaft-mounted encoder can be supplied pre-installed on the motors as shown in the price table below. The encoder requires a 5–26 VDC power source, provides a count of 1024 pulses per revolution (PPR) differential line driver output, and includes a 10-pin mating connector.

\* If connecting the motor to a GS3 DURApulse AC drive, a [GS3-FB Feedback Card](#) is required for the drive.

Motor Accessories		
Part Number	Price	Description *
<b>A772</b>	\$1,176.00	Encoder kit, replacement, for Black Max encoder motors. Dynapar HS35 encoder, 5–26 VDC input, Line Driver output, 1024 pulses per revolution, 5/8-in bore.

\* Replacement/spare encoder kit for Black Max Yxxx-A772 motors; can also be field installed on Black Max Yxxx motors without encoders.

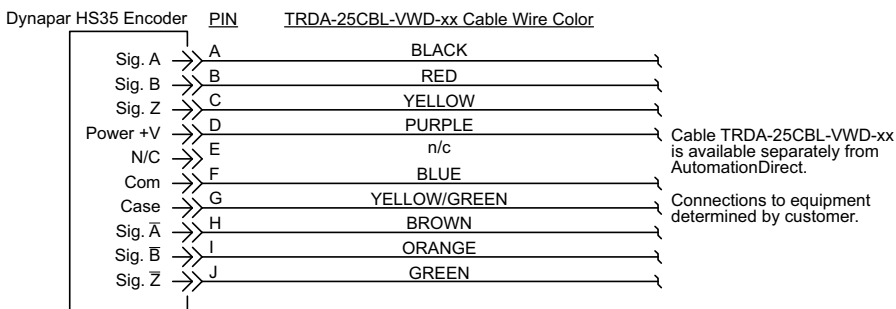
Motor with Pre-installed Shaft-Mounted Encoder								
230/460V Motors						575V Motors		
Part Number	Price	HP	Part Number	Price	HP	Part Number	Price	HP
<b>Y592-A772</b>	\$1,726.00	1/4	<b>Y544-A772</b>	\$3,763.00	5	<b>Y557-A772</b>	\$2,395.00	2
<b>Y534-A772</b>	\$1,833.00	1/2	<b>Y545-A772</b>	\$3,533.00	7 1/2	<b>Y558A-A772</b>	\$2,726.00	3
<b>Y535-A772</b>	\$1,936.00	1	<b>Y546-A772</b>	\$4,614.00	7 1/2	<b>Y559A-A772</b>	\$3,002.00	5
<b>Y536-A772</b>	\$1,953.00	1	<b>Y547-A772</b>	\$3,973.00	10	<b>Y560-A772</b>	\$3,533.00	7 1/2
<b>Y537-A772</b>	\$2,056.00	1	<b>Y548-A772</b>	\$5,052.00	10	<b>Y561-A772</b>	\$3,973.00	10
<b>Y538-A772</b>	\$2,189.00	1 1/2	<b>Y549-A772</b>	\$4,480.00	15	<b>Y562-A772</b>	Retired	15
<b>Y551-A772</b>	\$2,395.00	2	<b>Y552-A772</b>	\$5,942.00	20	<b>Y563-A772</b>	Retired	20
<b>Y540-A772</b>	\$2,944.00	2	<b>Y553-A772</b>	Retired	25			
<b>Y541A-A772</b>	\$2,726.00	3	<b>Y393-A772</b>	Retired	30			
<b>Y542-A772</b>	\$3,325.00	3	<b>Y555-A772</b>	\$1,833.00	1/2			
<b>Y543A-A772</b>	\$3,002.00	5	<b>Y556-A772</b>	\$1,936.00	1			

Note: Please review the AutomationDirect Terms & Conditions for warranty and service on this product. Warranty service can be arranged through numerous Marathon Electric service centers. See list of service centers on our Web site at [www.AutomationDirect.com](http://www.AutomationDirect.com).

# Black Max<sup>®</sup> Vector Duty Motors

## Encoder Connector Pinout

Note: A mating connector is supplied with the encoder. Prewired cables TRDA-25CBL-VWD-xx (10, 20, & 30 ft) and replacement MS connectors TRDA-25CON-VWD are available from AutomationDirect.



Motor Performance Data (460 Volt) *																
Part Number	HP	F.L. rpm	F.L. Amps @460V	N.L. Amps @460V	F.L. Torque (lb-ft)	B.D. Torque (lb-ft)	Max. C hp rpm *	Max. Safe rpm	F.L. Effic. (%)	F.L. Power Factor	Rotor Inertia (lb-ft <sup>2</sup> )	Ohms/Ph - Equiv. Wye Circuit (460 VAC) (at rated operating temp. in 40° C ambient)				
												R1	R2	X1	X2	XM
<a href="#">Y592</a>	1/4	1755	0.6	0.45	0.75	4.5	3540	5400	70.0	58.0	0.045	26.300	23.000	30.240	14.700	572.000
<a href="#">Y534</a>	1/2	1735	0.8	0.52	1.5	5.8	3510	5400	80.0	72.0	0.056	22.307	17.028	24.123	18.163	532.976
<a href="#">Y535</a>	1	1750	1.5	1.0	3.0	15.0	3505	5400	84.0	75.0	0.110	8.378	5.623	10.707	9.912	278.036
<a href="#">Y536</a>	1	1750	1.5	1.0	3.0	15.0	3505	5400	84.0	75.0	0.110	8.378	5.623	10.707	9.912	278.036
<a href="#">Y537</a>	1	1145	1.9	1.3	4.5	16.0	2260	5400	80.0	62.5	0.140	10.302	8.372	13.793	15.325	193.835
<a href="#">Y538</a>	1-1/2	1755	2.4	1.6	4.5	29.0	3518	5400	85.5	69.0	0.140	4.257	3.538	5.998	5.884	161.009
<a href="#">Y551</a>	2	1750	3.0	1.7	6.0	28.5	3525	5400	85.5	78.0	0.130	3.834	2.897	5.950	5.637	154.800
<a href="#">Y540</a>	2	1160	3.3	2.1	9.0	34.0	2315	5400	82.5	67.5	0.380	3.948	3.436	7.725	12.113	116.900
<a href="#">Y541A</a>	3	1755	4.1	2.3	9.0	49.3	3515	5400	87.5	78.5	0.420	1.578	1.802	2.838	2.091	94.13
<a href="#">Y542</a>	3	1158	4.7	3.0	13.6	49.0	2300	4200	82.5	72.5	0.600	2.469	2.318	6.508	4.125	83.910
<a href="#">Y543A</a>	5	1760	6.7	3.2	14.9	61.5	3520	5400	89.5	79	0.520	1.428	1.05	2.09	3.379	63.334
<a href="#">Y544</a>	5	1165	7.7	4.8	22.5	87.0	2320	4200	84.0	71.0	0.900	1.130	1.250	3.709	2.573	51.972
<a href="#">Y545</a>	7-1/2	1765	10.5	5.5	22.3	95.5	3525	4200	90.2	76.0	0.850	0.699	0.567	1.765	2.260	38.178
<a href="#">Y546</a>	7-1/2	1170	11.0	6.0	34.0	118.0	2325	4200	87.5	73.0	1.200	0.510	0.680	2.846	3.247	42.714
<a href="#">Y547</a>	10	1774	13.5	7.4	29.5	125.0	3540	4200	90.2	76.0	1.300	0.369	0.334	1.423	2.281	34.932
<a href="#">Y548</a>	10	1160	14	7.0	45.5	135.0	2320	4200	89.5	75.5	1.500	0.534	0.693	2.258	2.323	30.530
<a href="#">Y549</a>	15	1765	20	11.0	45.0	170.0	3550	4200	92.4	76.0	1.600	0.134	0.316	1.047	1.569	22.151
<a href="#">Y552</a>	20	1768	26	13.5	59.5	290.0	3560	5400	93.6	80.0	3.100	0.234	0.213	0.746	0.689	18.204
<a href="#">Y553</a>	25	1770	31	14.0	74.2	330.0	3530	3600	93.6	75.0	4.400	0.143	0.160	0.724	0.678	13.965
<a href="#">Y393</a>	30	1772	37	23.5	89.0	375.0	3560	3600	94.5	74.0	5.500	0.113	0.123	0.543	0.557	11.200

\* Maximum Constant hp rpm is for direct coupled loads.

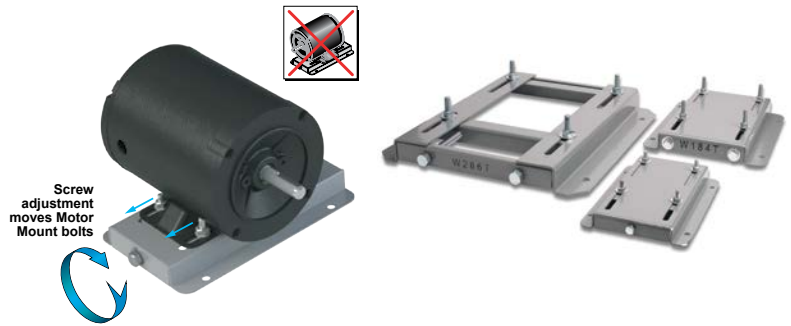
Motor Performance Data (575 Volt) *																
Part Number	HP	F.L. rpm	F.L. Amps @575V	N.L. Amps @575V	F.L. Torque (lb-ft)	B.D. Torque (lb-ft)	Max. C hp rpm*	Max. Safe rpm	F.L. Effic. (%)	F.L. Power Factor	Rotor Inertia (lb-ft <sup>2</sup> )	Ohms/Ph - Equiv. Wye Circuit (575 VAC) (at rated operating temp. in 40° C ambient)				
												R1	R2	X1	X2	XM
<a href="#">Y555</a>	1/2	1735	0.8	0.8	1.52	5.8	3510	5400	80.0	72	0.056	22.307	17.028	24.123	18.163	532.976
<a href="#">Y556</a>	1	1750	1.6	0.8	3.0	15.0	3505	5400	84.0	75	0.11	8.378	5.623	10.707	9.912	278.036
<a href="#">Y557</a>	2	1750	2.4	1.6	6.0	28.5	3525	5400	85.5	78	0.13	3.834	2.897	5.950	5.637	154.780
<a href="#">Y558A</a>	3	1755	3.3	1.8	9.0	49.3	3515	5400	87.5	78.5	0.42	1.578	1.802	2.838	2.091	94.13
<a href="#">Y559A</a>	5	1760	5.4	2.6	14.9	61.5	3520	5400	89.5	79	0.52	1.4288	1.0489	2.092	3.379	63.3339
<a href="#">Y560</a>	7-1/2	1765	8.0	4.8	22.3	95.5	3525	4200	90.2	76	0.9	0.699	0.567	1.765	2.260	38.178
<a href="#">Y561</a>	10	1774	11.2	5.6	29.6	125.0	3540	4200	90.2	76	1.3	0.284	0.284	1.420	2.272	34.932
<a href="#">Y562</a>	15	1765	16.0	8.8	44.6	170.0	3550	4200	92.4	76	1.6	0.314	0.316	1.047	1.569	22.151
<a href="#">Y563</a>	20	1770	20.8	11.2	59.5	290.0	3560	3600	93.6	77	3.5	0.220	0.192	0.675	0.684	18.204

\* Maximum Constant hp rpm is for direct coupled loads.

# STABLE™ Motor Slide Bases

## Mounting Slide Bases for 56 to 449T NEMA Motors Features

- Allows adjustment of motor mounting position
- Slide direction is perpendicular to motor shaft
- Double adjusting screws for frames 182T-449T
- Manufactured to precise dimensional standards
- Dimensionally interchangeable with existing major makes
- Heavy-duty steel construction
- Painted with oven-baked primer for better adhesion of customer's paint
- All "D" bolts (motor mounting bolts) are fixed to the exact motor foot pattern
- All "D" bolts are welded into position to prevent spinning and dropping from slots
- Nuts and washers are provided for securing the motor to the slide base



STABLE Motor Slide Bases for 3-Phase Motors											
Part Number (MTA-BASE-xxx)	Price	Fits Frame Type	Product Wt. (lb)	Fits Motor						Drawing Links	
				IronHorse	Leeson®	WEG (Part number ending in...)	Marathon				
					WashGuard®		microMAX, Max+, Black Max, Blue Max, SyMAX	XRI GP & NEMA Premium, Jet Pump	Globetrotter		
<b>W56</b>	\$14.00	56*	2.8	MTPM-P3x-1x18							
				MTPM-P5x-1x18							
				MTPM-P7x-1x18							
				MTPM-0xx-1x18							
				MTPM-1xx-1x18							
				MTR(2)(P)-xxx-xxxxx*							
				MTRJ(P)-xxx-xxxxx							
				MTSN-P33-3BD18							
				<u>MTSN-P33-3BD18R</u>	<u>112427.00</u>						
				<u>MTSN-P33-3BD36</u>	<u>112428.00</u>						
				<u>MTSP-P33-3BD18</u>	<u>112429.00</u>						
				<u>MTSP-P33-3BD18R</u>	<u>112430.00</u>						
				<u>MTSP-P33-3BD36</u>	<u>113019.00</u>						
				<u>MTSP-P33-3BD36R</u>	<u>113023.00</u>						
				<u>MTSN-P50-3BD18</u>	<u>113473.00</u>						
				<u>MTSN-P50-3BD18R</u>	<u>113586.00</u>						E2000
				<u>MTSN-P50-3BD36</u>	<u>113590.00</u>						D390
				<u>MTSP-P50-3BD12</u>	<u>113591.00</u>					Y500	G580
				<u>MTSP-P50-3BD18</u>	<u>113649.00</u>					Y502	D391
				<u>MTSP-P50-3BD18R</u>	<u>116644.00</u>					Y360	G581
				<u>MTSP-P50-3BD36</u>	<u>116645.00</u>					Y362	K705
				<u>MTSP-P50-3BD36R</u>	<u>119468.00</u>					Y364	D392
				<u>MTSN-P75-3BD18</u>	<u>119469.00</u>					Y280	G582
				<u>MTSN-P75-3BD18R</u>	<u>119471.00</u>					Y281	K707
				<u>MTSN-P75-3BD36</u>	<u>119475.00</u>					Y282	D393A
				<u>MTSP-P75-3BD12</u>	<u>119476.00</u>				(...)56-S	Y592(-A772)	K708A
				<u>MTSP-P75-3BD18</u>	<u>119478.00</u>				(...)56C-S	Y534(-A772)	G583A
				<u>MTSP-P75-3BD18R</u>	<u>119480.00</u>					Y535(-A772)	K709A
				<u>MTSP-P75-3BD36</u>	<u>119482.00</u>					Y555(-A772)	D394A
				<u>MTSP-P75-3BD36R</u>	<u>119483.00</u>					Y556(-A772)	K721A
				<u>MTSN-001-3BD18</u>	<u>191202.00</u>					SY001	G584A
				<u>MTSN-001-3BD18R</u>	<u>191204.00</u>					SY003	D395A
				<u>MTSN-001-3BD36</u>	<u>191205.00</u>					SY004	G585A
				<u>MTSP-001-3BD18</u>	<u>191206.00</u>					SY005	K724A
				<u>MTSP-001-3BD18R</u>	<u>191207.00</u>					SY035	D396A
				<u>MTSP-001-3BD36</u>	<u>191208.00</u>						K725A
				<u>MTSP-001-3BD36R</u>	<u>191560.00</u>						J066A
				<u>MTSN-1P5-3BD18</u>	<u>191561.00</u>						
				<u>MTSN-1P5-3BD18R</u>	<u>191562.00</u>						
				<u>MTSN-1P5-3BD36</u>	<u>191563.00</u>						
				<u>MTSP-1P5-3BD18</u>	<u>191564.00</u>						
				<u>MTSP-1P5-3BD18R</u>	<u>191569.00</u>						
				<u>MTSP-1P5-3BD36</u>							
				<u>MTSP-1P5-3BD36R</u>							
				<u>MTSN-002-3BD18</u>							
				<u>MTSN-002-3BD18R</u>							
				<u>MTSN-002-3BD36</u>							
				<u>MTSP-002-3BD18</u>							
				<u>MTSP-002-3BD18R</u>							
				<u>MTSP-002-3BD36</u>							
<u>MTSP-002-3BD36R</u>											

\* IronHorse MTR2 56HC motors have double-punched bases to fit on slide base MTA-BASE-W56.

# STABLE™ Motor Slide Bases

STABLE Motor Slide Bases for 3-Phase Motors										
Part Number (MTA-BASE-xxx)	Price	Fits Frame Type	Product Wt. (lb)	Fits Motor						Drawing Links
				IronHorse	Leeson®	WEG (Part number ending in...)	Marathon			
					WashGuard®		microMAX, Max+, Black Max, Blue Max, SyMAX	XRI GP & NEMA Premium, Jet Pump	Globetrotter	
<a href="#">W143T</a>	\$26.00	143T/TC	4.6	<a href="#">MTCP2-001-3BD18(C)</a> <a href="#">MTCP2-1P5-3BD36</a> <a href="#">MTSN-1P5-3BD36-14</a> <a href="#">MTSP-1P5-3BD36-14</a> <a href="#">MTSP-1P5-3BD36R-14</a>	<a href="#">191487.00</a> <a href="#">191565.00</a>		<a href="#">Y536(-A772)</a>	<a href="#">E2001A</a> <a href="#">E2003</a>	-	<a href="#">PDF</a>
<a href="#">W145T</a>	\$26.00	145T/TC	5.1	<a href="#">MTCP2-001-3BD12</a> <a href="#">MTCP2-1P5-3BD18(C)</a> <a href="#">MTCP2-002-3BD18(C)</a> <a href="#">MTCP2-002-3BD36</a> <a href="#">MTSP-001-3BD12</a> <a href="#">MTSN-1P5-3BD18-14</a> <a href="#">MTSN-1P5-3BD18R-14</a> <a href="#">MTSP-1P5-3BD18-14</a> <a href="#">MTSP-1P5-3BD18R-14</a> <a href="#">MTSN-002-3BD18-14</a> <a href="#">MTSN-002-3BD18R-14</a> <a href="#">MTSN-002-3BD36-14</a> <a href="#">MTSP-002-3BD18-14</a> <a href="#">MTSP-002-3BD18R-14</a> <a href="#">MTSP-002-3BD36-14</a> <a href="#">MTSP-002-3BD36R-14</a>	<a href="#">121866.00</a> <a href="#">121868.00</a> <a href="#">121870.00</a> <a href="#">122182.00</a> <a href="#">122184.00</a> <a href="#">122185.00</a> <a href="#">191490.00</a> <a href="#">191491.00</a> <a href="#">191570.00</a>	(...) 145T-S (...) 145TC-S	<a href="#">Y366</a> <a href="#">Y368</a> <a href="#">Y284</a> <a href="#">Y285</a> <a href="#">Y537(-A772)</a> <a href="#">Y538(-A772)</a> <a href="#">Y551(-A772)</a> <a href="#">Y557(-A772)</a>	<a href="#">E2002</a> <a href="#">E2004A</a> <a href="#">E2007A</a>	-	<a href="#">PDF</a>
<a href="#">W182T</a>	\$35.50	182T/TC	9.2	<a href="#">MTCP2-1P5-3BD12</a> <a href="#">MTCP2-003-3BD18(C)</a> <a href="#">MTCP2-003-3BD36</a> <a href="#">MTSP-1P5-3BD12</a> <a href="#">MTSN-003-3BD18-18</a> <a href="#">MTSN-003-3BD36-18</a> <a href="#">MTSP-003-3BD18-18</a> <a href="#">MTSP-003-3BD36-18</a>	<a href="#">132196.00</a> <a href="#">132198.00</a>		<a href="#">Y1999</a> <a href="#">Y286A</a> <a href="#">Y541A(-A772)</a> <a href="#">Y558A(-A772)</a> <a href="#">SY036</a> <a href="#">SY066</a>	<a href="#">E2009</a> <a href="#">E2010</a>	<a href="#">GT0010A</a> <a href="#">GT1010A</a>	<a href="#">PDF</a>
<a href="#">W184T</a>	\$35.50	184T/TC	10	<a href="#">MTCP2-002-3BD12</a> <a href="#">MTCP2-005-3BD18(C)</a> <a href="#">MTCP2-005-3BD36</a> <a href="#">MTF-00x-1C18</a> <a href="#">MTSP-002-3BD12</a> <a href="#">MTSP-005-3BD18</a> <a href="#">MTSP-005-3BD36</a>	<a href="#">132197.00</a> <a href="#">132200.00</a> <a href="#">132201.00</a> <a href="#">132440.00</a>		<a href="#">Y1372</a> <a href="#">Y287A</a> <a href="#">Y540(-A772)</a> <a href="#">Y543A(-A772)</a> <a href="#">Y559A(-A772)</a> <a href="#">E2012</a> <a href="#">E2013</a> <a href="#">SY007A</a> <a href="#">SY067</a>	-	<a href="#">GT0013A</a> <a href="#">GT1013A</a> <a href="#">GT1210A</a> <a href="#">GT1212A</a> <a href="#">GT1213A</a>	<a href="#">PDF</a>
<a href="#">W213T</a>	\$52.00	213T/TC	13	<a href="#">MTCP2-003-3BD12</a> <a href="#">MTCP2-7P5-3BD18(C)</a> <a href="#">MTCP2-7P5-3BD36</a> <a href="#">MTSP-003-3BD12</a> <a href="#">MTSP-7P5-3BD18</a>	<a href="#">140819.00</a> <a href="#">140822.00</a> <a href="#">141266.00</a>		<a href="#">Y994</a> <a href="#">Y542(-A772)</a> <a href="#">Y545(-A772)</a> <a href="#">Y560(-A772)</a> <a href="#">E2011</a> <a href="#">E2016A</a> <a href="#">E2011A</a> <a href="#">E2016B</a> <a href="#">SY068</a>	-	<a href="#">GT0016A</a> <a href="#">GT1016A</a> <a href="#">GT1216A</a>	<a href="#">PDF</a>
<a href="#">W215T</a>	\$52.00	215T/TC	15	<a href="#">MTCP2-005-3BD12</a> <a href="#">MTCP2-010-3BD18(C)</a> <a href="#">MTCP2-010-3BD36</a> <a href="#">MTSP-005-3BD12</a> <a href="#">MTSP-010-3BD18</a>	<a href="#">140820.00</a> <a href="#">140821.00</a>		<a href="#">Y996</a> <a href="#">Y544(-A772)</a> <a href="#">Y547(-A772)</a> <a href="#">Y561(-A772)</a> <a href="#">E2018</a> <a href="#">E2014A</a> <a href="#">E2018A</a> <a href="#">SY069</a>	-	<a href="#">GT0019A</a> <a href="#">GT1019A</a> <a href="#">GT1218A</a> <a href="#">GT1219A</a>	<a href="#">PDF</a>
<a href="#">W254T</a>	\$71.00	254T/TC	18	<a href="#">MTCP2-7P5-3BD12</a> <a href="#">MTCP2-015-3BD18(C)</a> <a href="#">MTCP2-015-3BD36</a> <a href="#">MTSP-015-3BD18</a>	-		<a href="#">Y546(-A772)</a> <a href="#">Y549(-A772)</a> <a href="#">Y562(-A772)</a>	-	<a href="#">GT0059</a> <a href="#">GT1022A</a> <a href="#">GT1222A</a>	<a href="#">PDF</a>

\* IronHorse MTR2 56HC motors have double-punched bases to fit on slide base MTA-BASE-W56.

# STABLE™ Motor Slide Bases

STABLE Motor Slide Bases for 3-Phase Motors										
Part Number (MTA-BASE- xxx)	Price	Fits Frame Type	Product Wt. (lb)	Fits Motor						Drawing Links
				IronHorse	Leeson®	WEG (Part number ending in...)	Marathon			
					WashGuard®		microMAX, Max+, Black Max, Blue Max, SyMAX	XRI GP & NEMA Premium, Jet Pump	Globetrotter	
<a href="#">W256T</a>	\$71.00	256T/ TC	19	MTCP2-010-3BD12 MTCP2-020-3BD18(C) MTCP2-020-3BD36 MTSP-020-3BD18	-		Y548(-A772) Y552(-A772) Y563(-A772)	-	GT0062 GT1025A GT1225A	<a href="#">PDF</a>
<a href="#">W284T</a>	\$79.00	284T/ TC	20	MTCP2-015-3BD12 MTCP2-025-3BD18(C)	-		Y553(-A772)	-	GT0065 GT1028A	<a href="#">PDF</a>
<a href="#">W286T</a>	\$79.00	286T/ TC	21	MTCP2-020-3BD12 MTCP2-030-3BD18(C)	-		Y393(-A772)	-	GT0067 GT1031A	<a href="#">PDF</a>
<a href="#">W324T</a>	\$116.00	324T/ TC	30	MTCP2-040-3BD18(C)	-		Y571(-A774) Y513(-A775)	-	GT0073 GT1034A	<a href="#">PDF</a>
<a href="#">W326T</a>	\$116.00	326T/ TC	31	MTCP2-050-3BD18(C)	-		Y572(-A774) Y514(-A775)	-	GT0077 GT1037A	<a href="#">PDF</a>
<a href="#">W364T</a>	\$158.00	364T/ TC	43	MTCP2-060-3BD18(C)	-		Y573(-A774) Y515(-A775)	-	GT1040A	<a href="#">PDF</a>
<a href="#">W365T</a>	\$158.00	365T/ TC	43	MTCP2-075-3BD18(C)	-		Y574(-A774) Y516(-A775)	-	GT1043A	<a href="#">PDF</a>
<a href="#">W404T</a>	\$193.00	404T/ TC	58	-	-		-	-	-	<a href="#">PDF</a>
<a href="#">W405T</a>	\$193.00	405T/ TC	60	MTCP2-100-3BD18(C)	-		Y575(-A774) Y517(-A775)	-	GT1046A	<a href="#">PDF</a>
<a href="#">W444T</a>	\$219.00	444T	63	MTCP2-125-3BD18	-		-	-	GT1049A	<a href="#">PDF</a>
<a href="#">W445T</a>	\$219.00	445T	65	MTCP2-150-3BD18	-		-	-	GT1052A	<a href="#">PDF</a>
<a href="#">W447T</a>	\$288.00	447T	89	MTCP2-200-3BD18	-		-	-	GT1055A	<a href="#">PDF</a>
<a href="#">W449T</a>	\$288.00	449T	94	MTCP2-250-3D18 MTCP2-300-3D18	-		-	-	-	<a href="#">PDF</a>

\* IronHorse MTR2 56HC motors have double-punched bases to fit on slide base [MTA-BASE-W56](#).

# STABLE™ Motor Slide Bases

## Mounting Slide Bases for 56 to 215T NEMA Motors Features

STABLE Motor Slide Bases for 1-phase Motors									
Part Number	Price	Fits Frame Type	Product Wt. (lb)	Fits Motor					
				IronHorse	Leeson®	Marathon			
					Washguard®	Marathon DP GP (NEMA Service Factor)	Marathon DP Air Compressor	Fan & Blower	Marathon TE GP 4-in-1
<a href="#"><u>MTA-BASE-W56</u></a>	\$14.00	56*	2.8	MTR2-xxx-1AB18 MTR2-xxx-1AB36 MTPM-xxx-1L18 MTPM-xxx-1M18	112431.00	<a href="#"><u>C158A</u></a>	D010 C169 C704 D017	<a href="#"><u>C216</u></a>	<a href="#"><u>G570</u></a>
					112527.00	<a href="#"><u>G915A</u></a>		<a href="#"><u>D311</u></a>	
					112528.00	<a href="#"><u>C175A</u></a>		<a href="#"><u>C1153</u></a>	<a href="#"><u>G571</u></a>
					112529.00	<a href="#"><u>C167A</u></a>		<a href="#"><u>C1155</u></a>	<a href="#"><u>D312</u></a>
					113583.00	<a href="#"><u>C179A</u></a>		<a href="#"><u>B319</u></a>	<a href="#"><u>G572</u></a>
					114311.00	<a href="#"><u>G937A</u></a>		<a href="#"><u>D118</u></a>	<a href="#"><u>D313</u></a>
					114313.00	<a href="#"><u>C185A</u></a>		<a href="#"><u>C1158</u></a>	<a href="#"><u>G573</u></a>
					114317.00	<a href="#"><u>C187A</u></a>		<a href="#"><u>C235</u></a>	<a href="#"><u>D314</u></a>
					191475.00	<a href="#"><u>C193A</u></a>		<a href="#"><u>D115</u></a>	<a href="#"><u>G574</u></a>
					191477.00	<a href="#"><u>E261A</u></a>		<a href="#"><u>C1160</u></a>	<a href="#"><u>D315</u></a>
					191479.00	<a href="#"><u>E268A</u></a>		<a href="#"><u>C1161</u></a>	<a href="#"><u>G575</u></a>
						<a href="#"><u>EG277A</u></a>		<a href="#"><u>B352</u></a>	<a href="#"><u>D316</u></a>
					<a href="#"><u>MTA-BASE-W143T</u></a>	\$26.00		143T / TC	4.6
<a href="#"><u>MTA-BASE-W145T</u></a>	\$26.00	145TC / TC	5.1	-	-	<a href="#"><u>C191</u></a> <a href="#"><u>I127</u></a> <a href="#"><u>C194</u></a>	-	-	-
<a href="#"><u>MTA-BASE-W182T</u></a>	\$35.50	182T / TC	9.2	-	-	-	-	-	-
<a href="#"><u>MTA-BASE-W184T</u></a>	\$35.50	184 / TC	10	MTF-00x-1C18	-	-	<a href="#"><u>Z502</u></a>	-	-
<a href="#"><u>MTA-BASE-W213T</u></a>	\$52.00	213T / TC	13	-	-	-	-	-	-
<a href="#"><u>MTA-BASE-W215T</u></a>	\$52.00	215T T TC	15	-	-	-	-	-	-

\* IronHorse MTR2 56HC motors have double-punched bases to fit on slide base [MTA-BASE-W56](#).