

PRODUCT INFORMATION PACKET

Model No: 184TTFS7290
Catalog No: Y380
3/1800/900, TEFC, 184T, 3/60/460
Other Purpose



Regal and Marathon are trademarks of Regal Beloit Corporation or one of its affiliated companies.
©2018 Regal Beloit Corporation, All Rights Reserved. MC017097E



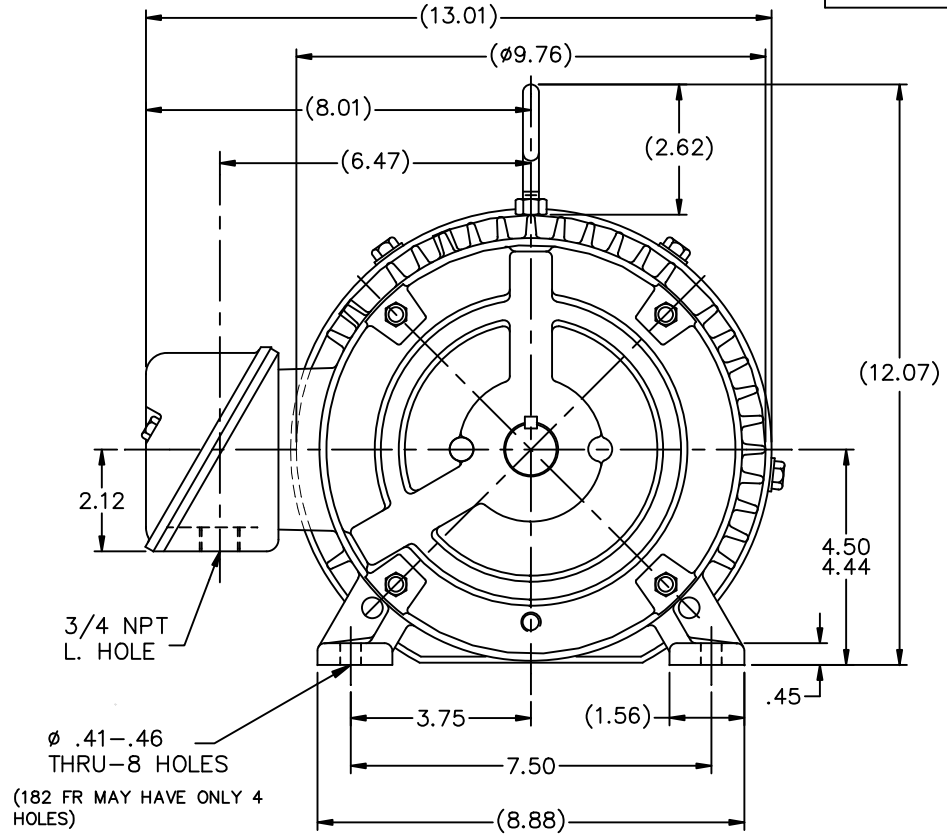
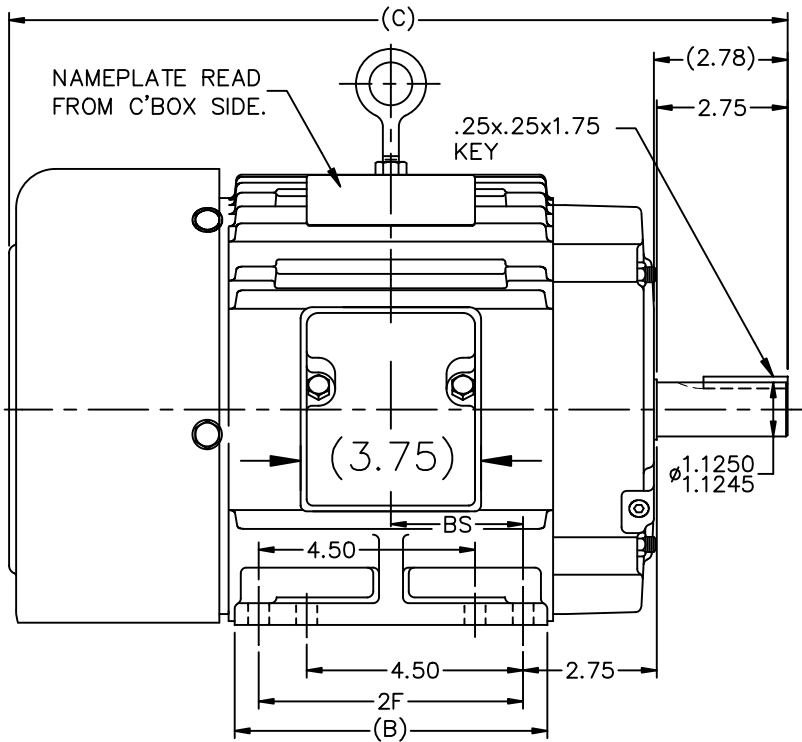


Nameplate Specifications

Output HP	3,0.75 Hp	Output KW	2.24 kW
Frequency	60 Hz	Voltage	460 V
Current	4,1.75 A	Speed	1760,875 rpm
Service Factor	1.15	Phase	3
Efficiency	85.5 %	Duty	CONTINUOUS
Insulation Class	F	Design Code	1VT
KVA Code	K	Frame	184T
Enclosure	TEFC	Overload Protector	NOT
Ambient Temperature	40 °C	Drive End Bearing Size	6206
Opp Drive End Bearing Size	6205	UL	Recognized
CSA	Y	CE	Y
IP Code	55		

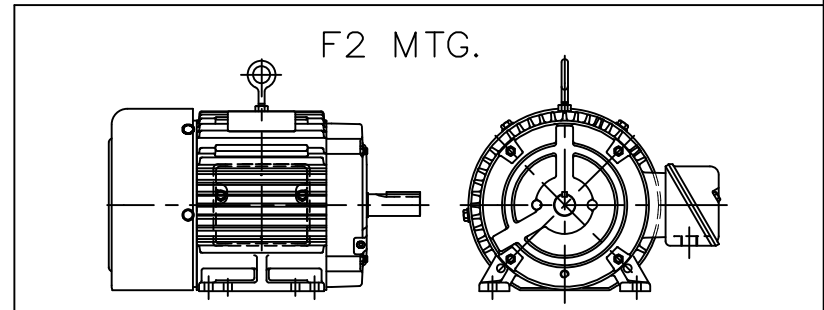
Technical Specifications

Electrical Type	SQ CAGE IND RUN	Starting Method	ACROSS THE LINE
Poles	4/8	Rotation	REV
Mounting	RIGID	Motor Orientation	HORIZONTAL
Drive End Bearing	BALL	Opp Drive End Bearing	BALL
Frame Material	CAST IRON	Shaft Type	T
Overall Length	16.19 in	Frame Length	6.75 in
Shaft Diameter	1.13 in	Shaft Extension	2.78 in
Assembly/Box Mounting	F1/F2 CAPABLE		
Outline Drawing	A-SS63661-675	Connection Diagram	A-EE7322



BOX CAN BE MOUNTED ON OPPOSITE SIDE BY REMOVING BRACKETS & TURNING FRAME 180°.

BOX CAN BE ROTATED IN 90° STEPS.



DASH	FR.	C	B	2F	BS
575	182T	15.19	5.50	4.50	2.25
675	184T	16.19	6.50	5.50	2.75
800	184T	17.44	7.75	5.50	3.38

NO.	REVISION	BY & DATE
13	CHG COND. BOX DIM, WAS 5.00 NOW 3.75 ECN 18821	TF 01/31/2011
12	REDRAWN IN AUTOCAD	TAT 06-29-2004
11	UPDATED MOUNTING HOLE NOTE CN 26000-581	DRS 01-02-2002
10	ADDED 182 FR. MAY HAV... NOTE CN 26000-581	MRB 07-02-1998
9	ADDED 4 MOUNTING HOLES	MJD 06-09-1998
8	ADDED NEMA "O" DIMENSION	MRB 09-12-1996

EMH	TOLERANCES UNLESS SPECIFIED
ML	DEC. INCHES
ML	.X ±.1
	.XX ±.03
	.XXX ±.005
	.XXXX ±.0005
CHK	ANG ±7'30"

MARATHON ELECTRIC

TITLE OUTLINE
180 FR. - BB - TS - TEFC

MAT'L.
FINISH

DRAWN	RM 01-08-1993
CHK	ML 01-13-1993
APPD	GK 01-13-1993
SCALE	1=4
REF	
FMF	
PREV	

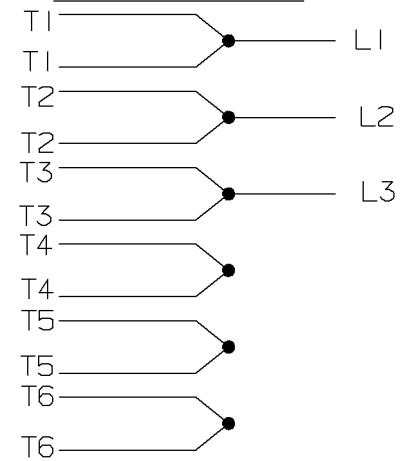
THIS DRAWING IN DESIGN AND DETAIL IS OUR PROPERTY AND MUST NOT BE USED EXCEPT IN CONNECTION WITH OUR WORK ALL RIGHTS OF DESIGN AND INVENTION ARE RESERVED THIS IS AN ELECTRONICALLY GENERATED DOCUMENT - DO NOT SCALE THIS PRINT

RFP	CAD FILE	SIZE	DRAWING NO.	PAGE	OF	REV.
DIST LB	ss63661	A	SS63661			13

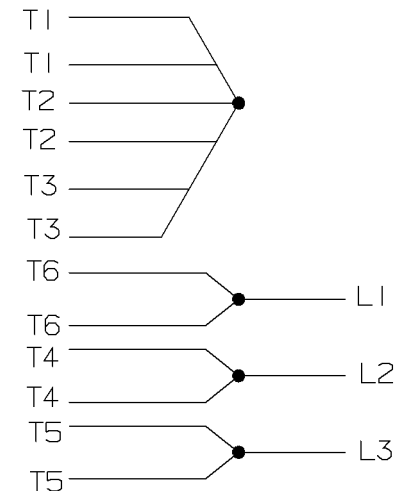
A- EE7322

FOR DUAL LEADS

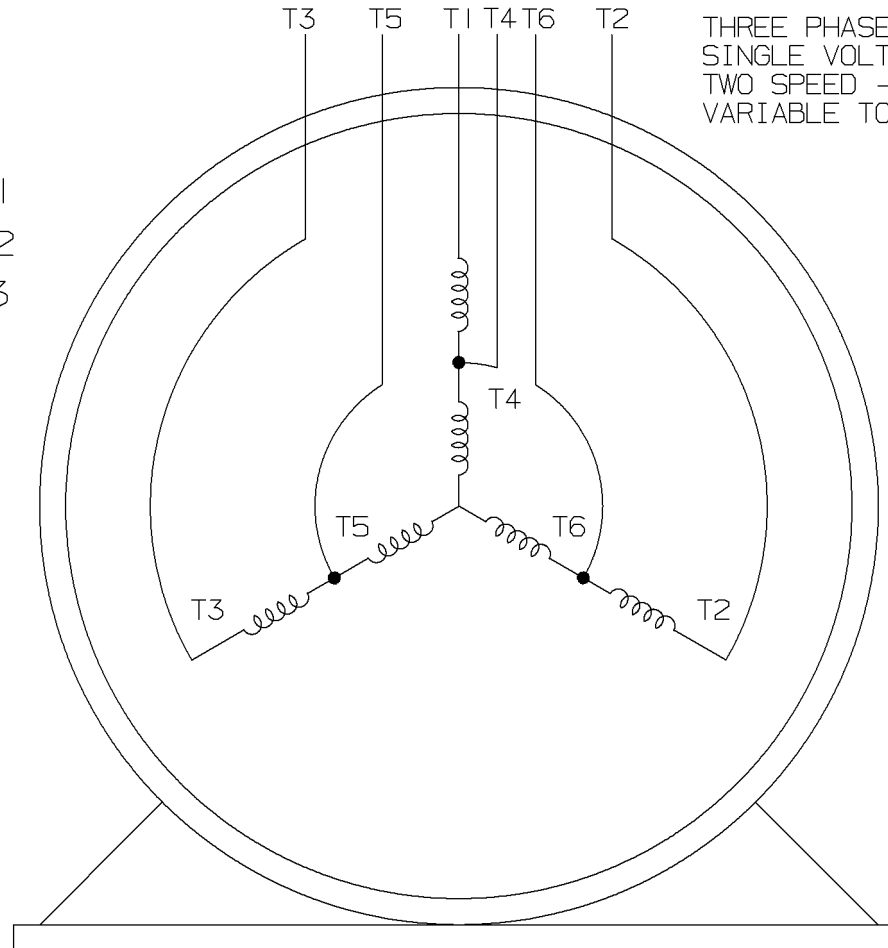
LOW SPEED



HIGH SPEED

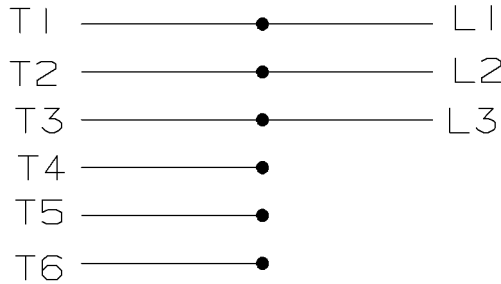


THREE PHASE MOTOR
SINGLE VOLTAGE
TWO SPEED - SGL. WDG.
VARIABLE TORQUE

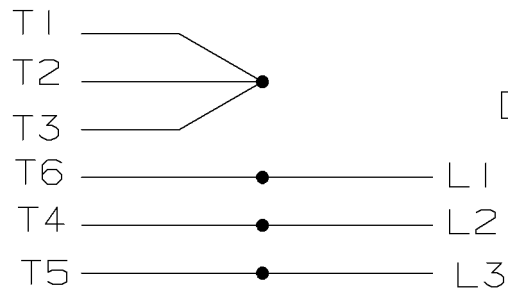


VIEW OF TERMINAL END

LOW SPEED



HIGH SPEED



T612C

T48B

				<input checked="" type="checkbox"/> MAX. SURFACE ROUGHNESS UNLESS NOTED OTHERWISE	UNLESS OTHERWISE SPECIFIED DIMENSIONS ARE IN INCHES				
				MATL SPEC	TOL. ON XX±	XXX±.005	XXXX±.0005	ANGLES±	
				FINISH	MARATHON ELECTRIC WAUSAU, WISCONSIN 54401			DRAWN BY PGK	12-26-1996
				REFERENCE DRW.				CHKD BY ML	01-07-1997
7	01-08-1997	REDRAWN ON CADD	CN 24000-27	PGK	PART NAME CONNECTION DIAGRAM			APPD BY TB	01-07-1997
REV	DATE	CHANGE	NAME	3Ø - SINGLE VOLTAGE - 2 SPEED				DRWG NO A- EE7322	

SHOP BOOK

PURCHASED

DISTRIBUTION - WA - LB - WP - LM - BR

CADD FILE NO.

EE7322

