

PRODUCT INFORMATION PACKET

Model No: 254TTDN16056
Catalog No: U436A
15,1800,DP,254TC,3/60/230/460
Open Drip Proof (ODP)



Regal and Marathon are trademarks of Regal Beloit Corporation or one of its affiliated companies.
©2018 Regal Beloit Corporation, All Rights Reserved. MC017097E





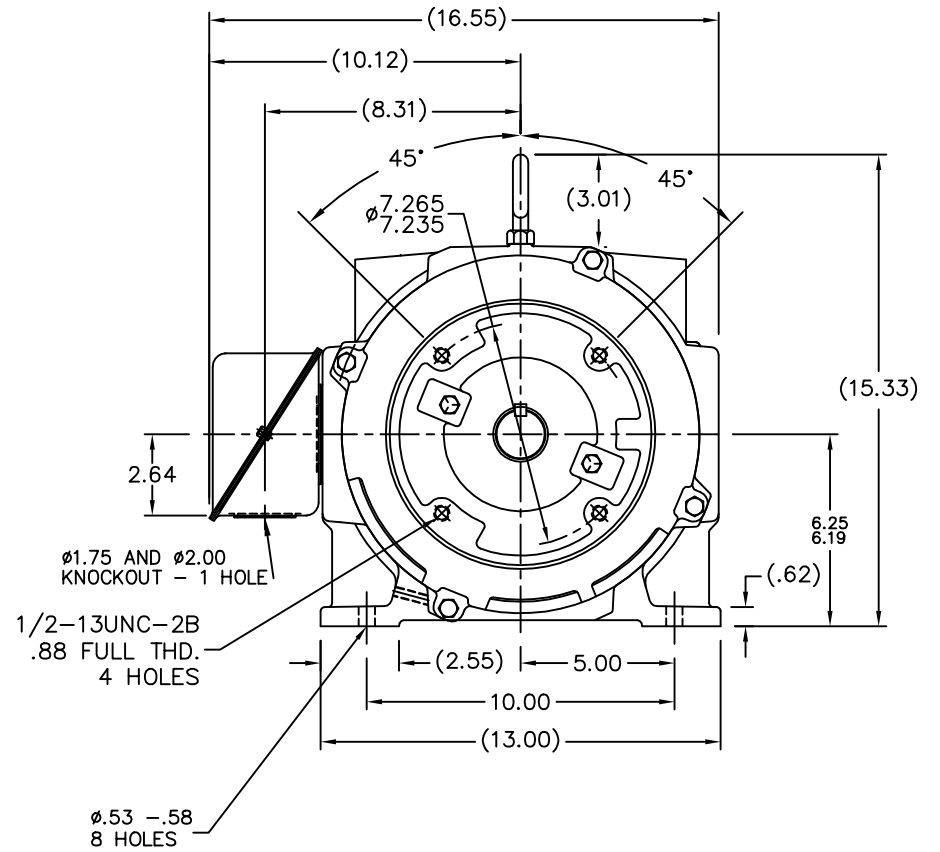
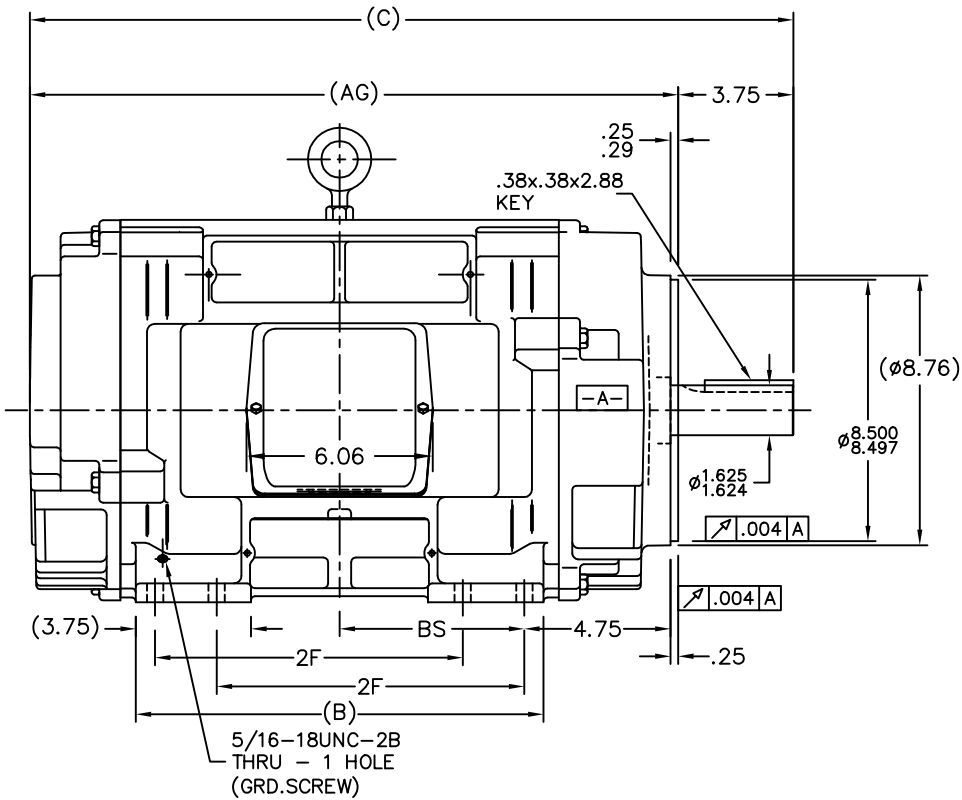
Nameplate Specifications

Output HP	15 Hp	Output KW	11.2 kW
Frequency	60 Hz	Voltage	230/460 V
Current	37/18.5 A	Speed	1775 rpm
Service Factor	1.15	Phase	3
Efficiency	93 %	Duty	CONTINUOUS
Insulation Class	F	Design Code	B
KVA Code	G	Frame	254TC
Enclosure	DP	Overload Protector	NOT
Ambient Temperature	40 °C	Drive End Bearing Size	6309
Opp Drive End Bearing Size	6208	UL	Recognized
CSA	Y	CE	Y
IP Code	22		

Technical Specifications

Electrical Type	SQ CAGE IND RUN	Starting Method	PWS(LV ONLY) & YDRUN
Poles	4	Rotation	REV
Mounting	RIGID	Motor Orientation	HORIZONTAL
Drive End Bearing	BALL	Opp Drive End Bearing	BALL
Frame Material	CAST IRON	Shaft Type	T
Overall Length	23.31 in	Frame Length	12.75 in
Shaft Diameter	1.63 in	Shaft Extension	3.75 in
Assembly/Box Mounting	F1/F2 CAPABLE		
Outline Drawing	B-SS203743-1275	Connection Diagram	A-EE7358

This is an uncontrolled document once printed or downloaded and is subject to change without notice. Date Created: 04/05/2018



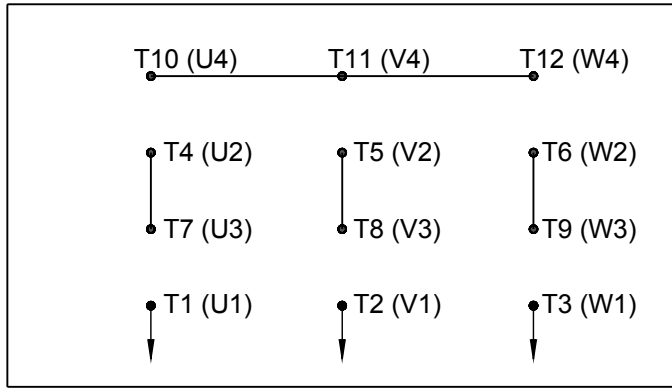
- NOTES:
 1. BOX CAN BE ROTATED IN 90° STEPS.
 2. BOX CAN BE MOUNTED ON OPPOSITE SIDE BE REMOVING BRACKETS AND TURNING FRAME 180°.
 3. NAMEPLATE TO BE READ FROM CONDUIT BOX SIDE OF MOTOR.

DASH	FRAME	C	AG	BS	B	2F
1275	254TC	23.31	19.57	5.25	11.75	8.25
1425	256TC	24.81	21.07	6.00	13.25	10.00

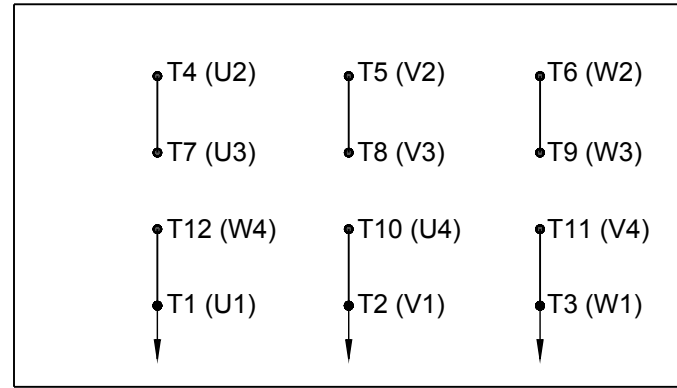
TOLERANCES UNLESS SPECIFIED		MARATHON ELECTRIC		DRAWN TAT 04-28-2004	
DEC.	INCHES	CHK	ML	ML 04-29-2004	
.X	±.1			APPD BW 04-29-2004	
.XX	±.03	TITLE OUTLINE - CAST IRON C'BOX			
.XXX	±.005	250T FR. - DR.PR.			
.XXXX	±.0005	MATL.		SCALE 1=4	
NO.	REVISION	BY & DATE	CHK	FINISH	
			ANG ±7°30"	PREV	
THIS DRAWING IN DESIGN AND DETAIL IS OUR PROPERTY AND MUST NOT BE USED EXCEPT IN CONNECTION WITH OUR WORK ALL RIGHTS OF DESIGN AND INVENTION ARE RESERVED THIS IS AN ELECTRONICALLY GENERATED DOCUMENT - DO NOT SCALE THIS PRINT		RFP	CAD FILE ss203743	SIZE B	DRAWING NO. PAGE OF REV. SS203743
		DIST LB			

HIGH VOLTAGE

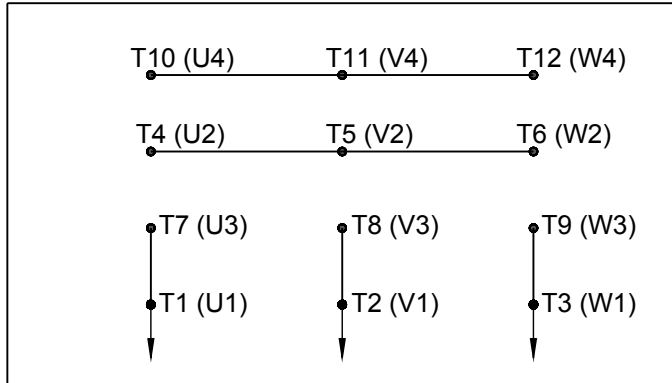
WYE START



DELTA RUN

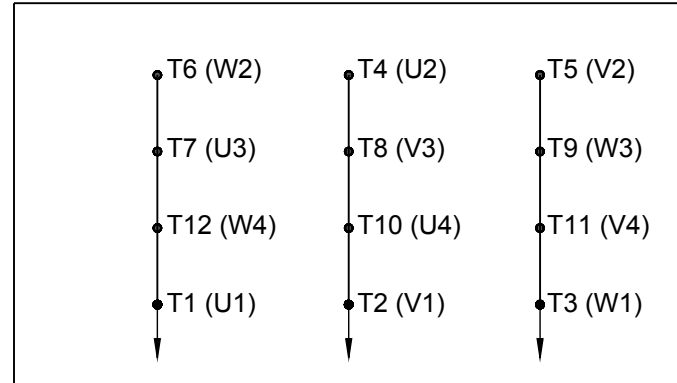


WYE START



LOW VOLTAGE

DELTA RUN

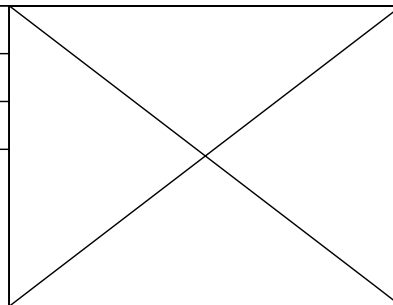


4/2 CKTY \triangle

DRAWING REVISION D	REVISION BY JWO	DATE 01-26-2016
-----------------------	--------------------	--------------------

ECO ECO-0092547	APPROVED BY TB	DATE 01-26-2016
--------------------	-------------------	--------------------

ECO DESCRIPTION
ADDED IEC MARKINGS



COPYRIGHT REGAL BELOIT AMERICA, INC. ALL RIGHTS RESERVED. PROPRIETARY AND CONFIDENTIAL INFORMATION - THIS DOCUMENT IS THE PROPERTY OF REGAL BELOIT AMERICA, INC. ("OWNER") AND CONTAINS OWNER'S PROPRIETARY INFORMATION. ANY PERSON, CORPORATION OR OTHER FIRM RECEIVING IT IS DEEMED, BY RECEIVING IT, TO AGREE THAT IT, AND/OR ANY PART OF IT, SHALL NOT BE DISCLOSED TO ANY PERSON, CORPORATION OR OTHER ENTITY, DUPLICATED, AND/OR USED, EXCEPT AS EXPRESSLY APPROVED IN WRITING IN ADVANCE BY OWNER. THIS DOCUMENT SHALL BE RETURNED TO OWNER UPON REQUEST. IT MAY BE SUBJECT TO CERTAIN RESTRICTIONS UNDER APPLICABLE EXPORT CONTROL LAWS AND REGULATIONS.

DRAWN BY BLR

DATE 03-09-1998

APPROVED BY GK

DATE 03-23-1998

REFERENCE

THIRD ANGLE PROJECTION

Regal Beloit America, Inc.

CONN DIAGRAM-EXTERNAL
12 LEAD - DUAL VOLT. - WYE START - DELTA RUN

MATERIAL	PROCESS/FINISH
----------	----------------

SIZE A	DRAWING NUMBER EE7358	SHEET 1 OF 1
-----------	--------------------------	-----------------



P.O. BOX 8003
WAUSAU, WI 54401-8003
PH. 715-675-3311

DATA VOLTS: 460

CERTIFICATION DATA SHEET

CUSTOMER: _____
 ORDER #: _____
 CONN. DIAGRAM: A-E/7358
 OUTLINE: B-SS203743-1275
 WINDING: K2544149 NONE 5
 SPEED: _____
 CUSTOMER P.O. #: _____
 REFERENCE MODEL #: 254TTDN16056
 CAT #: U436A
 CUSTOMER PART #: _____
 MOUNTING: F1/F2 CAPABLE

TYPICAL MOTOR PERFORMANCE DATA

HP	KW	SYNC RPM	FL RPM	FRAME	ENCLOSURE	TYPE	KVA CODE	DESIGN	
15	11.2	1800	1775	254TC	DP	TDN	G	B	
PH	HZ	VOLTS	AMPS	START TYPE	DUTY	INSL	S.F.	AMB	ELEV.
3	60/50	230/460#190/380	37/18.5&32/16	PWS(LV ONLY) & YDRU	CONT	F	1.15	40	3300
	F.L. EFF	93.0	3/4 LD EFF	93.6	1/2 LD EFF	93.0	GTD EFF		ELECT. TYPE
	F.L. PF	82.0	3/4 LD PF	77.0	1/2 LD PF	67.0	91.7		SO CAGE IND RUN
	F.L. TORQUE	LR AMPS @ 460 V	L.R. TORQUE	BD. TORQUE	F.L. RISE (° C)				
	44.5 LB-FT	107	78.0 LB-FT	175%	121 LB-FT	272%	25		
	@ 3 FT. DBA	POWER	ROTOR WK²	MAX. LOAD WK²	SAFE STALL TIME	STARTS/HOUR	MOTOR WGT		
	70	79 DBA	2.40 LB-FT²	90 LB-FT²	20 SEC.	2	275 LB.		

*** SUPPLEMENTAL INFORMATION ***

DE BRACKET TYPE	ODE BRACKET TYPE	MOUNT TYPE	MOTOR ORIENTATION	SEVERE DUTY	HAZARDOUS LOCATION	DRIP COVER	SCREENS	PAINT
C-FACE	STANDARD	RIGID	HORIZONTAL	NO	NONE	NO	NONE	BLUE (ENAMEL)
BEARINGS	GREASE	SHAFT TYPE	SPECIAL DE	SPECIAL ODE	SHAFT MATERIAL	FRAME MATERIAL		
DE ODE								
BALL BALL	POL YREX EM	T	NONE	NONE	1045 HOT ROLLED (C-204	CAST IRON		
6309								
THERMOSTATS	PROTECTORS	WDG RTD's	BRG RTD's	THERMISTORS	CONTROL	SPACE HEATERS		
NONE	NOT	NONE	NONE	NONE	FALSE	NA		
R1 (ohms/ph)	R2 (ohms/ph)	X1 (ohms/ph)	X2 (ohms/ph)	Xm (ohms/ph)	VIBRATION (in/sec)	FLOAT ODE		
0.386	0.612	1.361	0.926	35.154	0.150			

* N O T E S	INVERTER TORQUE: NONE INV. HP SPEED RANGE: NONE	ENCODER: NONE	NONE	NONE	NONE	PPR
		BRAKE: NONE	NONE	NA	NONE	
		FT-LB: VOLTAGE:	NONE	NONE	HZ:	

PREPARED BY: EARL BABBITTS
DATE: 13-07-17

FORM: 3531 REV. 4 2/27/06

UL: V-INS. CONST UL REC

Data Sheet

Date: 16-06-2017
 Customer: _____
 Attention: _____
 Submitted by: FAREEDA DUDEKULA



254TTDN16056

Submittal

Data @ 460 V

Motor Load Data

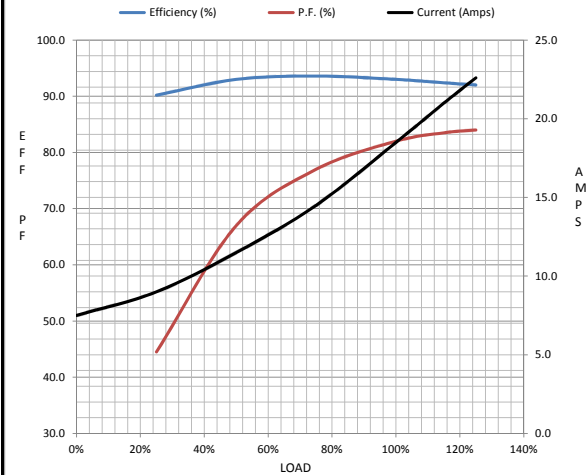
Load	0%	25%	50%	75%	100%	115%	125%	LR
Current (Amps)	7.5	9.0	11.5	14.5	18.5	21.0	22.6	107
Torque (ft-lb)	0.00	11.0	22.0	33.0	44.5	51.0	55.5	78.0
RPM	1800	1795	1785	1780	1775	1,770	1765	0
Efficiency (%)		90.2	93.0	93.6	93.0	92.4	92.0	
P.F. (%)	4.0	44.5	67.0	77.0	82.0	83.5	84.0	40.5

Motor Speed Data

	LR	Pull-Up	BD	Rated	Idle
Speed (RPM)	0	900	1650	1775	1800
Current (Amps)	107	96.0	66.0	18.5	7.5
Torque (ft-lb)	78.0	75.0	121	44.5	0.00

Information Block

HP	15.0			
Sync. RPM	1800			
Frame	254			
Enclosure	DP			
Construction	TDN			
Voltage	30/460#190/38V			
Frequency	60 Hz			
Design	B			
LR Code letter	G			
Service Factor	1.15			
Temp Rise @ FL	25 ° C			
Duty	CONT			
Ambient	40 ° C			
Elevation	1,000 feet			
Rotor/Shaft wk ²	2.40 Lb-Ft ²			
Ref Wdg	K2544149 NONE			
Sound Pressure @ 1M	70 dBA			
VFD Rating	NONE			
Outline Dwg	B-SS203743-1275			
Conn. Diag	A-EE7358			
Additional Specifications:				
0				
365THFS8036				
EQUIV CKT (OHMS / PHASE)				
R1	R2	X1	X2	Xm
0.3860	0.6120	1.3610	0.9260	35.1540



Speed -Torque Curve

