

PRODUCT INFORMATION PACKET

Model No: 256TTDR16004
Catalog No: U225A
25/25,3600/3000,DP,256JP,3/60/50200-230/460#200/400
JP



Regal and Marathon are trademarks of Regal Beloit Corporation or one of its affiliated companies.
©2018 Regal Beloit Corporation, All Rights Reserved. MC017097E

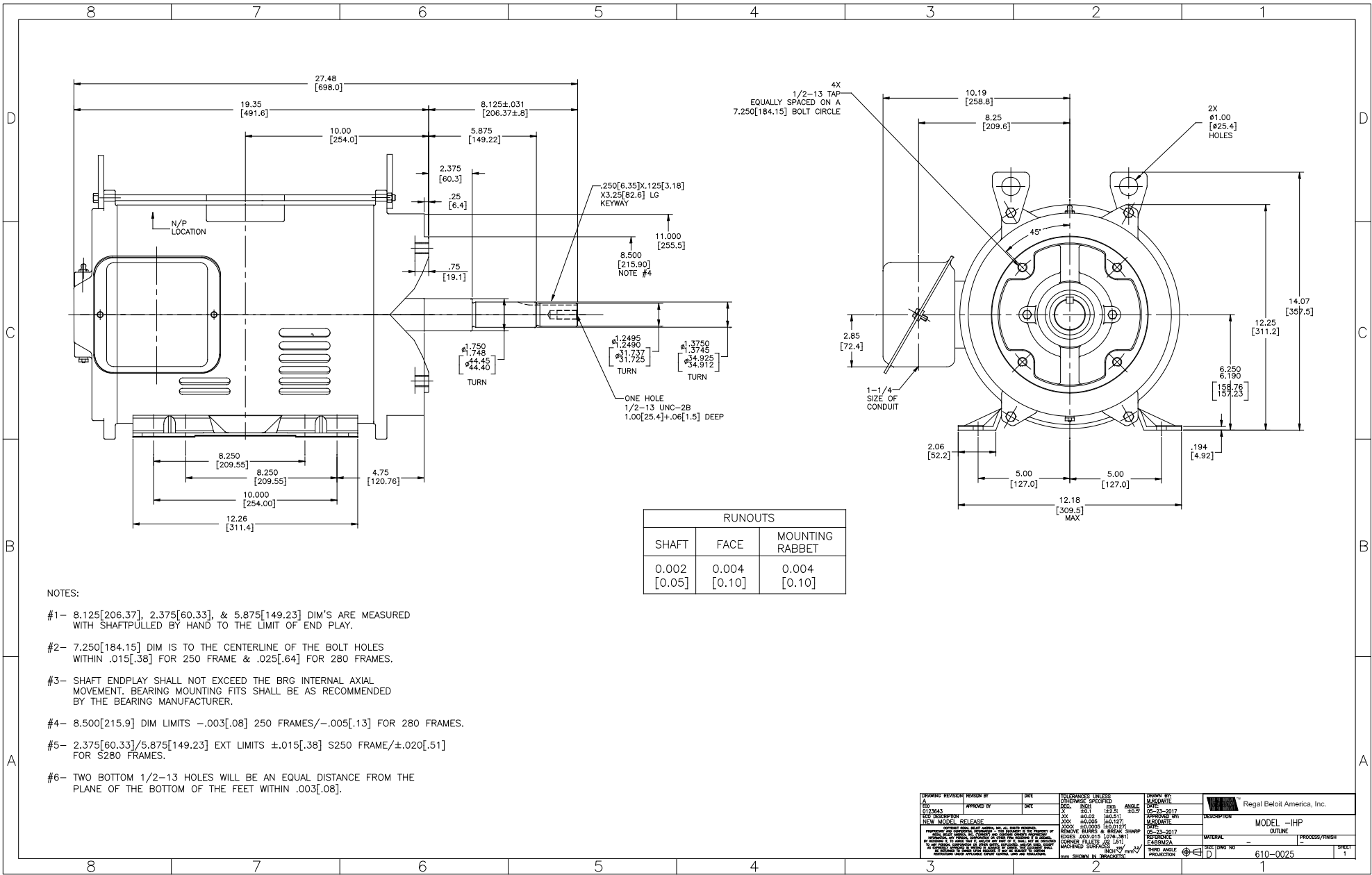


Nameplate Specifications

Output HP	25 Hp	Output KW	18.7 kW
Frequency	60 Hz	Voltage	200-230/460 V
Current	52.0-57.0/28.5 A	Speed	3525 rpm
Service Factor	1.15	Phase	3
Efficiency	91.7 %	Duty	Continuous
Insulation Class	F	Design Code	B
KVA Code	G	Frame	256T
Enclosure	Drip Proof	Overload Protector	No
Ambient Temperature	40 °C	Drive End Bearing Size	6309
Opp Drive End Bearing Size	6207	UL	Recognized
CSA	Y	CE	Y
IP Code	12		

Technical Specifications

Electrical Type	Squirrel Cage Induction Run	Starting Method	Across The Line
Poles	2	Rotation	Reversible
Mounting	Rigid base	Motor Orientation	HORIZONTAL
Drive End Bearing	BALL	Opp Drive End Bearing	BALL
Frame Material	Rolled Steel	Shaft Type	T
Overall Length	27.48 in	Frame Length	14.00 in
Shaft Diameter	1.750 in	Shaft Extension	8.13 in
Assembly/Box Mounting	F1 ONLY		
Outline Drawing	610-0025-1400	Connection Diagram	80022802



RUNOUTS		
SHAFT	FACE	MOUNTING RABBET
0.002 [0.05]	0.004 [0.10]	0.004 [0.10]

- NOTES:
- #1- 8.125[206.37], 2.375[60.33], & 5.875[149.23] DIM'S ARE MEASURED WITH SHAFT PULLED BY HAND TO THE LIMIT OF END PLAY.
 - #2- 7.250[184.15] DIM IS TO THE CENTERLINE OF THE BOLT HOLES WITHIN .015[.38] FOR 250 FRAME & .025[.64] FOR 280 FRAMES.
 - #3- SHAFT ENDPLAY SHALL NOT EXCEED THE BRG INTERNAL AXIAL MOVEMENT. BEARING MOUNTING FITS SHALL BE AS RECOMMENDED BY THE BEARING MANUFACTURER.
 - #4- 8.500[215.9] DIM LIMITS $-.003[.08]$ 250 FRAMES/ $-.005[.13]$ FOR 280 FRAMES.
 - #5- 2.375[60.33]/5.875[149.23] EXT LIMITS $\pm 0.015[.38]$ S250 FRAME/ $\pm 0.020[.51]$ FOR S280 FRAMES.
 - #6- TWO BOTTOM 1/2-13 HOLES WILL BE AN EQUAL DISTANCE FROM THE PLANE OF THE BOTTOM OF THE FEET WITHIN .003[.08].

DRAWING REVISION	REASON BY	DATE	TOLERANCES UNLESS OTHERWISE SPECIFIED	DRAWN BY	DATE
A			ANGULAR ±0.5°	REGAL	05-23-2017
B			LINE ±0.01		
C			PLANE ±0.02		
D			FORM ±0.01		
E			ROUNDNESS ±0.01		
F			SKID MARKS ±0.005		
G			CORNER RADIUS ±0.01		
H			EDGES ±0.015		
I			CORNER FILLETS ±0.15		
J			MACHINED SURFACES ±0.01		
K			THIRD ANGLE PROJECTION		

NEW MODEL RELEASE

REGAL BELLOIT AMERICA, INC. MODEL - IHP

MATERIAL: ALUMINUM 6061-T6

PROCESS/FINISH: ANODIZED

SIZE/DWG NO: 610-0025

SHEET: 1