

PRODUCT INFORMATION PACKET

Model No: TCA0041AE271GAA009

Catalog No: R624

4.0 kW General Purpose Low Voltage IEC Motor, 3 phase, 3600 RPM, 230/460 V, 112M Frame, TEFC
Cast Iron IE3 Efficiency Motors





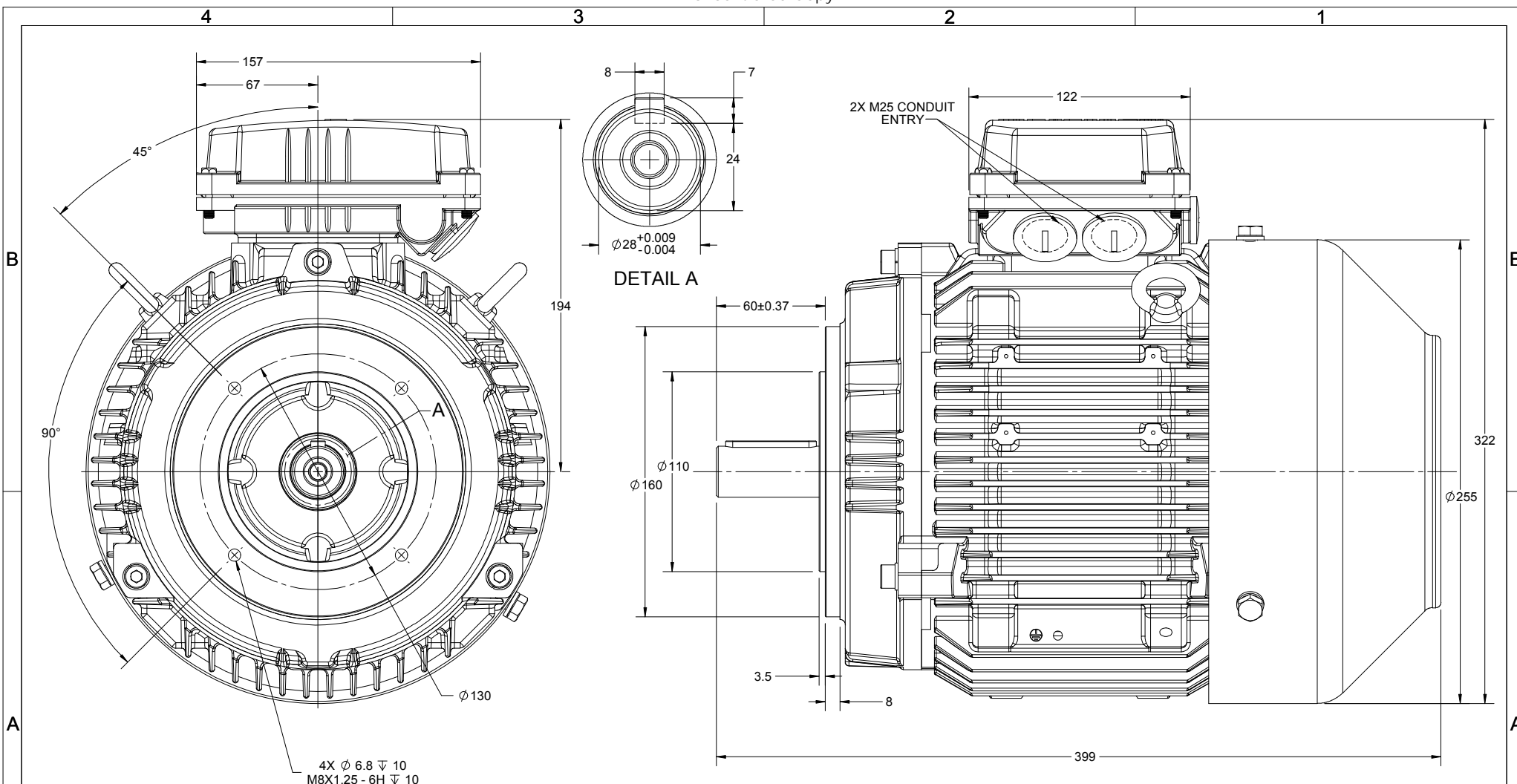
Nameplate Specifications

Output HP	5.50 Hp	Output KW	4.0 kW
Frequency	60 Hz	Voltage	230/460 V
Current	12.4/6.2 A	Speed	3520 rpm
Service Factor	1.15	Phase	3
Efficiency	89.5 %	Power Factor	91
Duty	Continuous	Insulation Class	F
Design Code	N (IEC)	KVA Code	J
Frame	112M	Enclosure	Totally Enclosed Fan Cooled
Thermal Protection	No	Ambient Temperature	40 °C
Drive End Bearing Size	6306	Opp Drive End Bearing Size	6206
UL	Recognized	CSA	N
CE	Y	IP Code	55

Technical Specifications

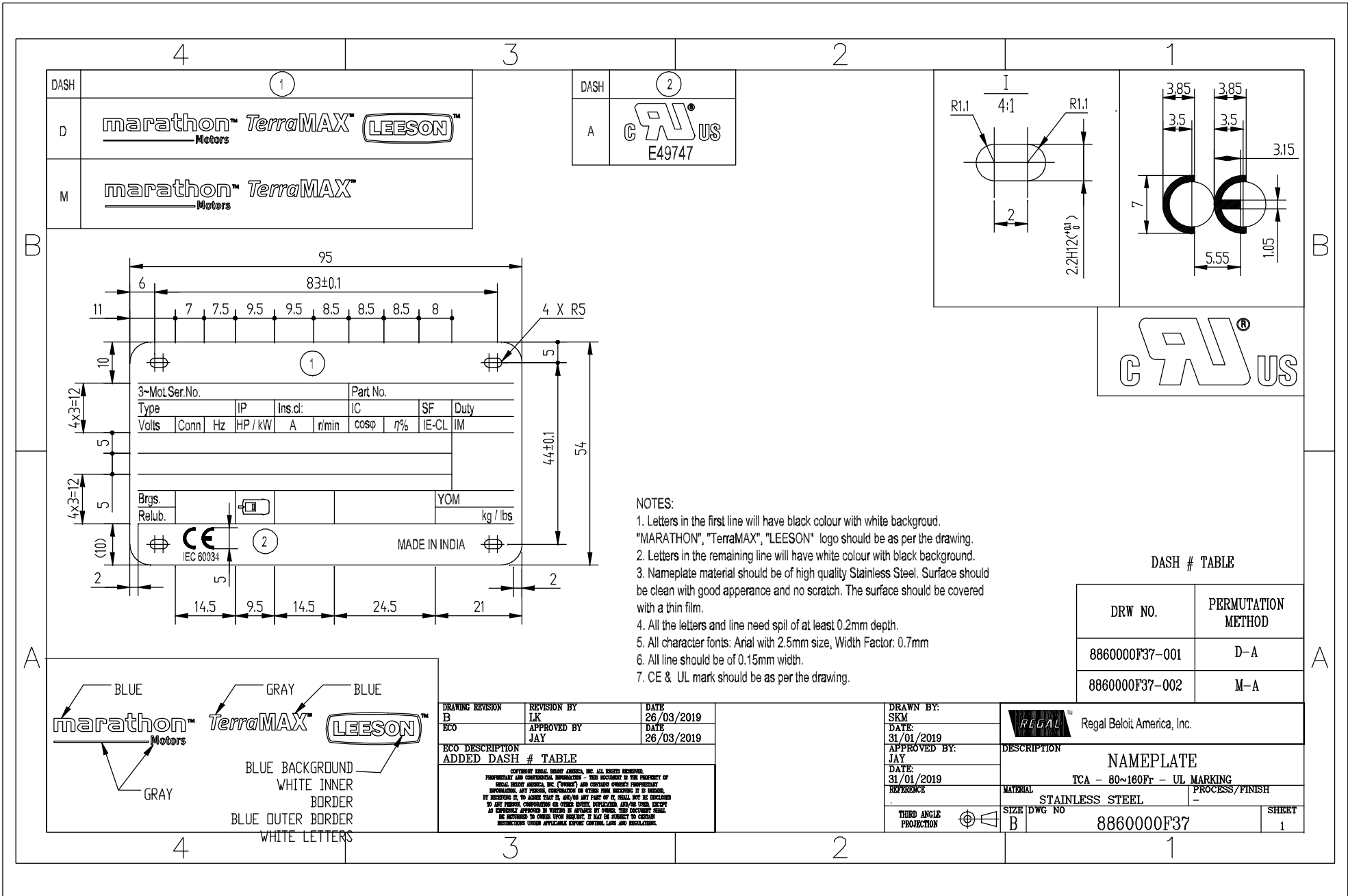
Electrical Type	Squirrel Cage Inverter Rated	Starting Method	Line Or Inverter
Poles	2	Rotation	Reversible
Resistance Main	3.17 Ohms	Mounting	Round
Motor Orientation	Horizontal	Drive End Bearing	Ball
Opp Drive End Bearing	Ball	Frame Material	Cast Iron
Shaft Type	IEC	Overall Length	15.71 in
Frame Length	6.85 in	Shaft Diameter	1.102 in
Shaft Extension	2.36 in	Assembly/Box Mounting	F3

This is an uncontrolled document once printed or downloaded and is subject to change without notice. Date Created:01/11/2019



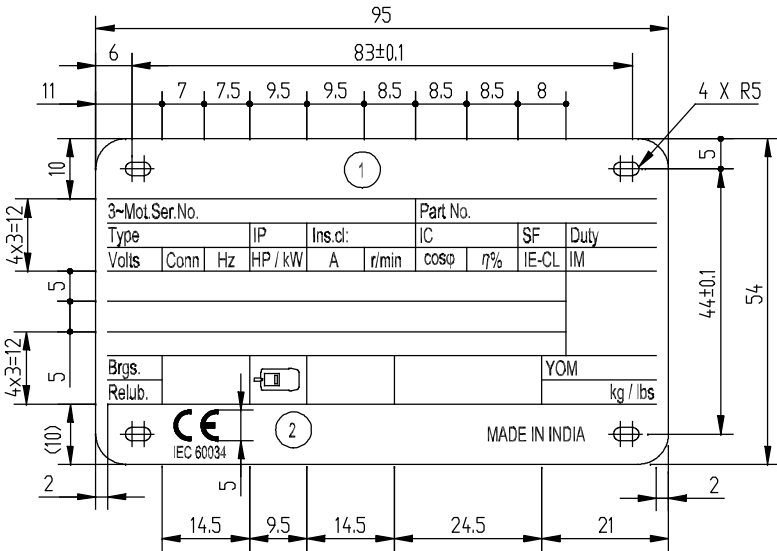
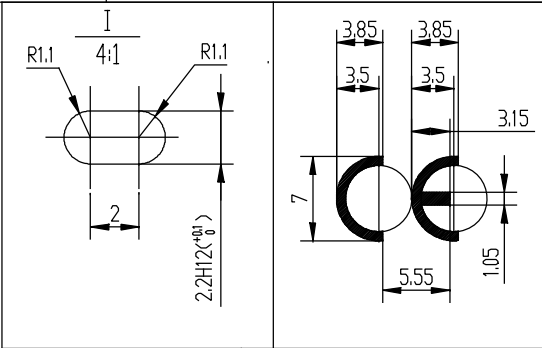
DRAWING REVISION A	REVISION BY MSH	DATE 11/02/2019
ECO ECO-0161495	APPROVED BY JAY	DATE 11/02/2019
ECO DESCRIPTION NEW DRAWING RELEASE		
<small>COPYRIGHT REGAL BELLOTT AMERICA, INC. ALL RIGHTS RESERVED. PROPRIETARY AND CONFIDENTIAL INFORMATION - THIS DOCUMENT IS THE PROPERTY OF REGAL BELLOTT AMERICA, INC. (OWNER) AND CONTAINS OWNERS PROPRIETARY INFORMATION. ANY PERSON, CORPORATION OR OTHER FIRM RECEIVING IT IS DEEMED, BY RECEIVING IT, TO AGREE THAT IT, AND/OR ANY PART OF IT, SHALL NOT BE DISCLOSED TO ANY PERSON, CORPORATION OR OTHER ENTITY, DUPLICATED, AND/OR USED, EXCEPT AS EXPRESSLY APPROVED IN WRITING IN ADVANCE BY OWNER. THIS DOCUMENT SHALL BE RETURNED TO OWNER UPON REQUEST. IT MAY BE SUBJECT TO CERTAIN RESTRICTIONS UNDER APPLICABLE EXPORT CONTROL LAWS AND REGULATIONS.</small>		

DRAWN BY MSH	
DATE 11/02/2019	
APPROVED BY JAY	
DATE 11/02/2019	
REFERENCE	DESCRIPTION OUTLINE IEC-112M-B14A, MOTOR TYPE: NA-TEFC-CAST IRON
THIRD ANGLE PROJECTION	MATERIAL
SIZE B	DRAWING NUMBER SS620898
	PROCESS/FINISH
	SHEET 1 OF 1



DASH	①
D	marathon™ TerraMAX™ LEESON™ Motors
M	marathon™ TerraMAX™ Motors

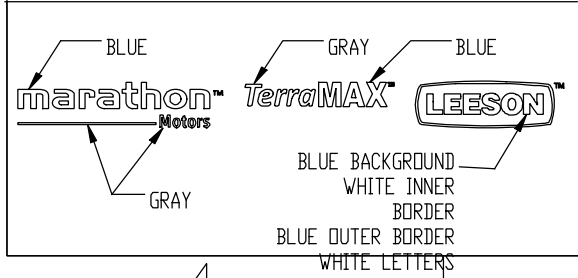
DASH	②
A	CAI US E49747



- NOTES:
1. Letters in the first line will have black colour with white background.
 2. Letters in the remaining line will have white colour with black background.
 3. Nameplate material should be of high quality Stainless Steel. Surface should be clean with good appearance and no scratch. The surface should be covered with a thin film.
 4. All the letters and line need spil of at least 0.2mm depth.
 5. All character fonts: Arial with 2.5mm size, Width Factor: 0.7mm
 6. All line should be of 0.15mm width.
 7. CE & UL mark should be as per the drawing.

DASH # TABLE

DRW NO.	PERMUTATION METHOD
8860000F37-001	D-A
8860000F37-002	M-A



DRAWING REVISION	REVISION BY	DATE
B	LK	26/03/2019
ECC	APPROVED BY	DATE
	JAY	26/03/2019
ECC DESCRIPTION		
ADDED DASH # TABLE		

COPYRIGHT REGAL BELLOI AMERICA, INC. ALL RIGHTS RESERVED. PROPRIETARY AND CONFIDENTIAL INFORMATION - THIS DOCUMENT IS THE PROPERTY OF REGAL BELLOI AMERICA, INC. ("REGAL") AND CONTAINS REGAL'S PROPRIETARY INFORMATION AND TRADE SECRETS. NO PART OF THIS DOCUMENT IS TO BE REPRODUCED, COPIED, OR TRANSMITTED IN ANY FORM OR BY ANY MEANS, ELECTRONIC OR MECHANICAL, INCLUDING PHOTOCOPYING, RECORDING, OR BY ANY INFORMATION STORAGE AND RETRIEVAL SYSTEM, WITHOUT THE WRITTEN PERMISSION OF REGAL BELLOI AMERICA, INC. ANY UNAUTHORIZED USE OR DISCLOSURE OF THIS DOCUMENT IS STRICTLY PROHIBITED. REGAL BELLOI AMERICA, INC. SHALL NOT BE LIABLE FOR ANY DAMAGES, INCLUDING CONSEQUENTIAL DAMAGES, ARISING FROM THE USE OF THIS DOCUMENT. IT MAY BE SUBJECT TO CERTAIN RESTRICTIONS UNDER APPLICABLE EXPORT CONTROL LAWS AND REGULATIONS.

DRAWN BY:	SKM
DATE:	31/01/2019
APPROVED BY:	JAY
DATE:	31/01/2019
REFERENCE:	
THIRD ANGLE PROJECTION	

Regal Beloit America, Inc.	
DESCRIPTION	
NAMEPLATE	
TCA - 80~160Fr - UL MARKING	
MATERIAL	STAINLESS STEEL
PROCESS/FINISH	-
SIZE DWG NO	8860000F37
SHEET	1

P.O. BOX 8003
WAUSAU, WI 54401-8003
PH. 715-675-3311

DATA VOLTS: 460

CERTIFICATION DATA SHEET

CUSTOMER: _____
ORDER #: _____
CONN. DIAGRAM: 8860000F37
OUTLINE: SS620898
WINDING: IE3L1122201
REFERENCE MODEL #: TCA0041AE271GA009
CAT #: R624
CUSTOMER PART #: _____
MOUNTING: F3

TYPICAL MOTOR PERFORMANCE DATA

HP	KW	SYNC RPM	FL RPM	FRAME	ENCLOSURE	TYPE	KVA CODE	DESIGN	
5.5	4.1	3600	3520	112M	TEFC	TCA 112M02	J	N	
PH	HZ	VOLTS	AMPS	START TYPE	DUTY	INSL	S.F.	AMB	ELEV.
3	60/50	230/460#200/400	12.4/6.2&11.2/5.6	LINE OR INVERTER	CONT	F	1.15	40	3300
F.L. EFF		89.5	3/4 LD EFF	89.5	1/2 LD EFF	89.2	GTD EFF	ELECT. TYPE	
F.L. PF		91.0	3/4 LD PF	87.0	1/2 LD PF	80.0	87.9	SQ CAGE INV RATED	
F.L. TORQUE		LR AMPS @ 460 V		L.R. TORQUE		B.D. TORQUE		F.L. RISE (°C)	
8.2	LB-FT	55.1	17.8	LB-FT	217%	27.9	LB-FT	340%	80
@ 3 FT. DBA		POWER	ROTOR WK²	MAX. LOAD WK²	SAFE STALL TIME	START/HOUR	MOTOR WGT		
68	DBA	77	DBA	0.28	LB-FT²	0.28	LB-FT²	7	SEC.

***** SUPPLEMENTAL INFORMATION *****

DE BRACKET TYPE	ODE BRACKET TYPE	MOUNT TYPE	MOTOR ORIENTATION	SEVERE DUTY	HAZARDOUS LOCATION	DRIP COVER	SCREENS	PAINT
FT-FLANGE-130	STANDARD	ROUND	HORIZONTAL	NO	NONE	NO	NONE	BLUE - RAL 5014
BEARINGS	GREASE	SHAFT TYPE	SPECIAL DE	SPECIAL ODE	SHAFT MATERIAL	FRAME MATERIAL		
DE ODE BALL 6306	POLYREX EM	STANDARD IEC	NONE	NONE	1045 HOT ROLLED (C-204)	CAST IRON		

THERMOSTATS	PROTECTORS	WDG RTD's	BRG RTD's	THERMISTORS	CONTROL	SPACE HEATERS
NONE	NOT	NONE	NONE	NONE	FALSE	NA
R1 (ohms/ph)	R2 (ohms/ph)	X1 (ohms/ph)	X2 (ohms/ph)	Xm (ohms/ph)	VIBRATION (in/sec)	FLOAT ODE
1.908	0.928	3.094	1.599	126.712	0.060	ODE

* N O T E S *	INVERTER TORQUE: CONSTANT 2:1/VARIABLE 10:1 INV. HP SPEED RANGE: NONE
	ENCODER: NONE
	NONE
	NONE
	BRAKE: NONE
	NONE
	FT-LB: NA
	NONE
	VOLTAGE: NONE
	NONE
	UL: V - LI-ME-INS CONST UL REC
	HZ:

PREPARED BY: Fareeda Dudekula
DATE: 5/30/2019

FORM: 3531 REV. 4 2/27/06



