

PRODUCT INFORMATION PACKET

Model No: TCA0032AP211GAA009

Catalog No: R452B

3.0 kW General Purpose Low Voltage IEC Motor, 3 phase, 1800 RPM, 575 V, 100L Frame, TEFC
Cast Iron IE3 Efficiency Motors



Regal and Marathon are trademarks of Regal Beloit Corporation or one of its affiliated companies.
©2019 Regal Beloit Corporation, All Rights Reserved. MC017097E

REGAL



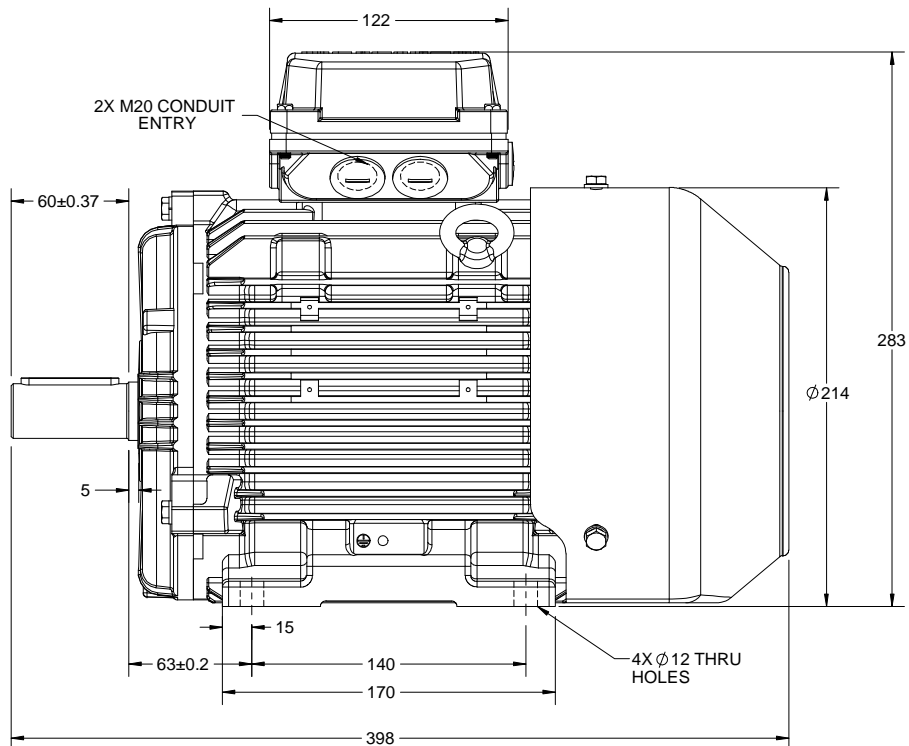
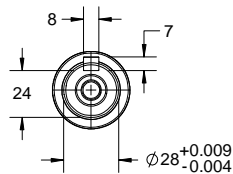
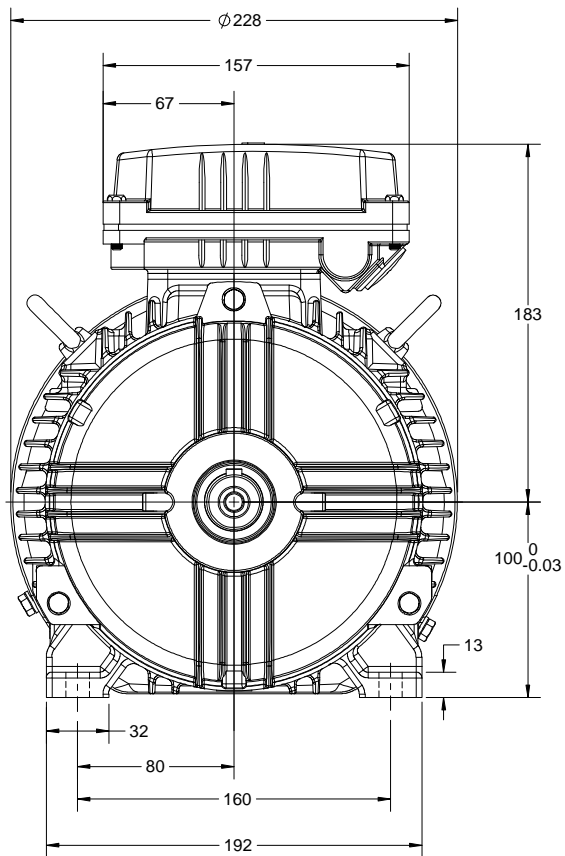
Nameplate Specifications

Output HP	4 Hp	Output KW	3.0 kW
Frequency	60 Hz	Voltage	575 V
Current	4.2 A	Speed	1765 rpm
Service Factor	1.15	Phase	3
Efficiency	89.5 %	Power Factor	81
Duty	Continuous	Insulation Class	F
Design Code	N (IEC)	KVA Code	L
Frame	100L	Enclosure	Totally Enclosed Fan Cooled
Thermal Protection	No	Ambient Temperature	40 °C
Drive End Bearing Size	6206	Opp Drive End Bearing Size	6206
UL	Recognized	CSA	N
CE	Y	IP Code	55

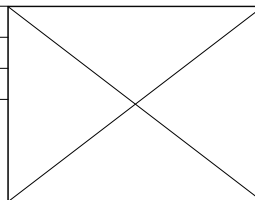
Technical Specifications

Electrical Type	Squirrel Cage Inverter Rated	Starting Method	Line Or Inverter
Poles	4	Rotation	Reversible
Resistance Main	3.18 Ohms	Mounting	B3
Motor Orientation	Horizontal	Drive End Bearing	Ball
Opp Drive End Bearing	Ball	Frame Material	Cast Iron
Shaft Type	IEC	Overall Length	15.67 in
Frame Length	7.87 in	Shaft Diameter	1.102 in
Shaft Extension	2.36 in	Assembly/Box Mounting	F3

This is an uncontrolled document once printed or downloaded and is subject to change without notice. Date Created:01/11/2019



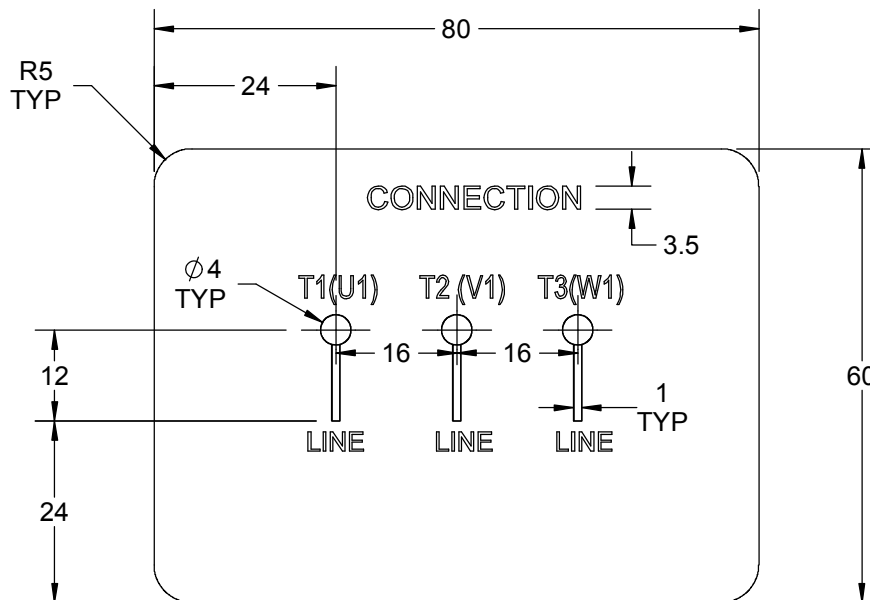
DRAWING REVISION A	REVISION BY NIV	DATE 03/12/2018
ECO ECO-0157171	APPROVED BY JAY	DATE 03/12/2018
ECO DESCRIPTION NEW DRAWING RELEASE		
<small>COPYRIGHT REGAL BELLOTT AMERICA, INC. ALL RIGHTS RESERVED. PROPRIETARY AND CONFIDENTIAL INFORMATION - THIS DOCUMENT IS THE PROPERTY OF REGAL BELLOTT AMERICA, INC. ("OWNER") AND CONTAINS OWNER'S PROPRIETARY INFORMATION. ANY PERSON, CORPORATION OR OTHER FIRM RECEIVING IT IS DEEMED, BY RECEIVING IT, TO AGREE THAT IT, AND/OR ANY PART OF IT, SHALL NOT BE DISCLOSED TO ANY PERSON, CORPORATION OR OTHER ENTITY, DUPLICATED, AND/OR USED, EXCEPT AS EXPRESSLY APPROVED IN WRITING IN ADVANCE BY OWNER. THIS DOCUMENT SHALL BE RETURNED TO OWNER UPON REQUEST. IT MAY BE SUBJECT TO CERTAIN RESTRICTIONS UNDER APPLICABLE EXPORT CONTROL LAWS AND REGULATIONS.</small>		



DRAWN BY NIV
DATE 03/12/2018
APPROVED BY JAY
DATE 03/12/2018
REFERENCE
THIRD ANGLE PROJECTION

marathon Motors	
DESCRIPTION OUTLINE IEC-100 FR- B3 MOTOR TYPE: TEFC-CAST IRON	
MATERIAL	PROCESS/FINISH
SIZE B	DRAWING NUMBER SS600216
SHEET 1 OF 1	

GENERAL TOLERANCE		
LINEAR DIM	>0~6	±0.1
	>6~30	±0.2
	>30~120	±0.3



NOTES:

1. PRESSURE-SENSITIVE ADHESIVE TAPE COATED WITH ANTI-ADHESIVE.
2. YELLOW COLOR BACK GROUND LETTERS WILL BE BLACK.
3. THE TOLERANCE OF THE LINEAR SIZE OF THE TOLERANCE WITHOUT THE TOLERANCE BY THE TABLE.
4. LEAD TERMINAL MARKINGS FONT SIZE : T1-T2 - T3 & U1-V1-W1 OF ARIAL WITH 3mm SIZE
5. OTHER LETTER FONT SIZE SHOULD BE 3.5mm.

DRAWING REVISION A	REVISION BY A. KEETHA	DATE 25/07/2019		DRAWN BY A. KEETHA	Regal Beloit America, Inc.	
ECO ECO-0171114	APPROVED BY SN	DATE 25/07/2019		DATE 24/07/2019		
ECO DESCRIPTION NEW DRAWING RELEASE				APPROVED BY SN	DESCRIPTION CONNECTION DIAGRAM 3 LEAD CONNECTION	
<small>COPYRIGHT REGAL BELOIT AMERICA, INC. ALL RIGHTS RESERVED. PROPRIETARY AND CONFIDENTIAL INFORMATION - THIS DOCUMENT IS THE PROPERTY OF REGAL BELOIT AMERICA, INC. ("OWNER") AND CONTAINS OWNER'S PROPRIETARY INFORMATION. ANY PERSON, CORPORATION OR OTHER FIRM RECEIVING IT IS DEEMED, BY RECEIVING IT, TO AGREE THAT IT, AND/OR ANY PART OF IT, SHALL NOT BE DISCLOSED TO ANY PERSON, CORPORATION OR OTHER ENTITY, DUPLICATED, AND/OR USED, EXCEPT AS EXPRESSLY APPROVED IN WRITING IN ADVANCE BY OWNER. THIS DOCUMENT SHALL BE RETURNED TO OWNER UPON REQUEST. IT MAY BE SUBJECT TO CERTAIN RESTRICTIONS UNDER APPLICABLE EXPORT CONTROL LAWS AND REGULATIONS.</small>				DATE 24/07/2019	MATERIAL	PROCESS/FINISH
			THIRD ANGLE PROJECTION	SIZE A	DRAWING NUMBER 8442000685	SHEET 1 OF 1

Data Sheet

TCA0032AP211GAA009

Date: 5/29/2019

Customer: _____
Attention: _____

Submital

Submitted by: Fareeda Dudekula

Data @ 575 V

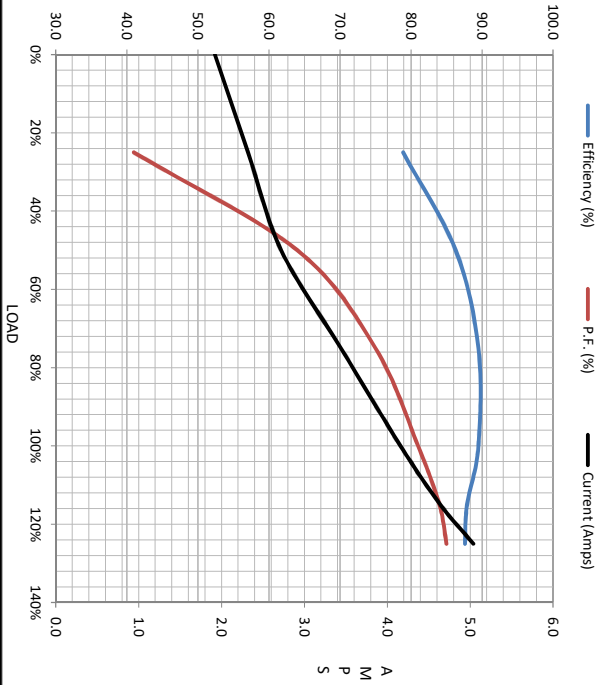
Load	Motor Load Data						LR
	0%	25%	50%	75%	100%	115%	
Current (Amps)	1.92	2.32	2.72	3.4	4.2	4.6	39.1
Torque (ft-lb)	0.00	2.90	5.9	8.9	11.9	13.8	35.4
RPM	1800	1791	1782	1773	1765	1753	0
Efficiency (%)		78.9	86.3	89.5	89.5	87.9	87.6
P.F. (%)	10.0	41.0	64.0	75.0	81.0	84.0	85.0

Motor Speed Data

	LR	Pull-Up	BD	Rated	Idle
Speed (RPM)	0	600	1406	1765	1800
Current (Amps)	39.1	37.1	22.5	4.2	1.92
Torque (ft-lb)	35.4	33.7	41.8	11.9	0.00

IEC

Information Block	
HP	4.0
Sync. RPM	1800
Frame	100
Enclosure	TEFC
Construction	TCA 100LB04
Voltage	575 V
Frequency	60 Hz
Design	N
LR Code letter	L
Service Factor	1.15
Temp Rise @ FL	80 °C
Duty	CONT
Ambient	40 °C
Elevation	3,300 feet
Rotor/Shaft wk ²	0.34 Lb-Ft ²
Ref Wdg	IE9L1004202 NONE
Sound Pressure @ 1M	55 dBA
VFD Rating	CONSTANT 2:1-VARIABLE 10:1
Outline Dwg	SS600216
Conn. Diag	8442000675
Additional Specifications:	
0	
EQUIV CKT (OHMS / PHASE)	
R1	X1
3.1020	1.7730
	4.9860
	X2
	Xm
	8.9750
	169.8560



Speed - Torque Curve

