

# PRODUCT INFORMATION PACKET

Model No: 184TTDR16009  
Catalog No: M804B  
5,1800,DP,184HPV,3/60/230/460  
Vertical Hollow Shaft P-Base



Regal and Marathon are trademarks of Regal Beloit Corporation or one of its affiliated companies.  
©2018 Regal Beloit Corporation, All Rights Reserved. MC017097E



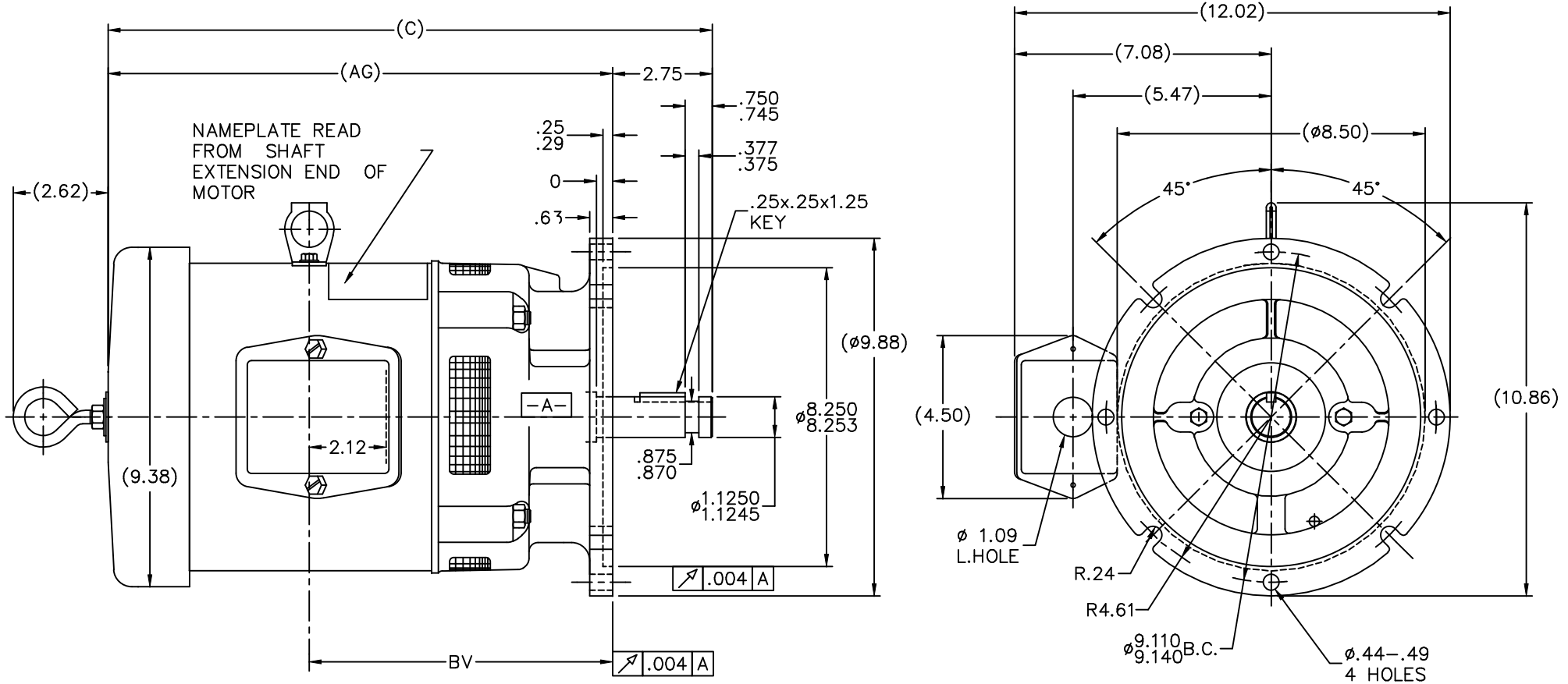
### Nameplate Specifications

Output HP	<b>5 Hp</b>	Output KW	<b>3.7 kW</b>
Frequency	<b>60 Hz</b>	Voltage	<b>230/460 V</b>
Current	<b>12.6/6.3 A</b>	Speed	<b>1750 rpm</b>
Service Factor	<b>1.15</b>	Phase	<b>3</b>
Efficiency	<b>89.5 %</b>	Duty	<b>Continuous</b>
Insulation Class	<b>F</b>	Design Code	<b>B</b>
KVA Code	<b>J</b>	Frame	<b>184HPV</b>
Enclosure	<b>Drip Proof</b>	Overload Protector	<b>No</b>
Ambient Temperature	<b>40 °C</b>	Drive End Bearing Size	<b>207</b>
Opp Drive End Bearing Size	<b>205</b>	UL	<b>Recognized</b>
CSA	<b>Y</b>	CE	<b>Y</b>
IP Code	<b>22</b>		

### Technical Specifications

Electrical Type	<b>Squirrel Cage Induction Run</b>	Starting Method	<b>Across The Line</b>
Poles	<b>4</b>	Rotation	<b>Reversible</b>
Mounting	<b>Round</b>	Motor Orientation	<b>SHAFT DOWN</b>
Drive End Bearing	<b>BALL</b>	Opp Drive End Bearing	<b>BALL</b>
Frame Material	<b>Rolled Steel</b>	Shaft Type	<b>HP</b>
Overall Length	<b>18.18 in</b>	Frame Length	<b>8.25 in</b>
Shaft Diameter	<b>0.875 in</b>	Shaft Extension	<b>2.75 in</b>
Assembly/Box Mounting	<b>F1/F2 CAPABLE</b>		
Outline Drawing	<b>B-SS63891-825</b>	Connection Diagram	<b>A-EE7308</b>

This is an uncontrolled document once printed or downloaded and is subject to change without notice. Date Created: 10/30/2018



BOX CAN BE ROTATED IN 90° STEPS.

DASH	FR.	C	AG	BV
575	182HP	15.68	12.93	7.88
675	182/4HP	16.68	13.93	8.38
725	182/4HP	17.18	14.43	8.63
775	182/4HP	17.68	14.93	8.88
825	182/4HP	18.18	15.43	9.13
875	182/4HP	18.68	15.93	9.38

10-03-2001  
10-03-2001

NO.	REVISION	BY & DATE	CHK	ANG	FINISH	PREV
14	UPDATED DRAWING	RJW 04-19-2007				
13	REDRAWN IN AUTOCAD	TAT 07-22-2004	ML	DEC.	INCHES	
12	UPDATED REAR BRACKET	HLB 12-05-2001	ML	.X	±.1	
11	ADDED LIFTING LUG	MU38434 DAH 08-20-2001		.XX	±.03	
10	REV. -675, -775, -875 FR.	CN 27400-320 CAE 10-13-1999		.XXX	±.005	
9	REVISED EYEBOLT LOCATION	MU25204 CAE 06-02-1999		.XXXX	±.0005	
THIS DRAWING IN DESIGN AND DETAIL IS OUR PROPERTY AND MUST NOT BE USED EXCEPT IN CONNECTION WITH OUR WORK ALL RIGHTS OF DESIGN AND INVENTION ARE RESERVED THIS IS AN ELECTRONICALLY GENERATED DOCUMENT - DO NOT SCALE THIS PRINT			RFP	ANG	±7'30"	
CAD FILE ss63891						SIZE B
DIST LB						DRAWING NO. SS63891
						PAGE 14



TITLE OUTLINE  
180HP FR. - BB - TS - DR.PR. - 'P' BASE

DRAWN LZ 07-05-1994
CHK ML 07-06-1994
APPD GK 07-06-1994
SCALE 3=8
REF
FMF
PREV

EE7308

THREE PHASE  
DUAL VOLTAGE MOTOR



VIEW OF TERMINAL END

REF.  
WINDING DIAGRAM

T8Y, T2Y, T2BL, T4BX, T2EC, T2G  
T6BZ, T2B, T6BL, T4AV, T6B, T4B

OPTIONAL CORD  
CONNECTION

L1 — WHITE  
L2 — RED  
L3 — BLACK

NO.	REVISION	BY & DATE	CHK	ANG	TOLERANCES UNLESS SPECIFIED		FINISH	DRAWN RM 11/20/1990				
					DEC.	INCHES						
5	CHG TO REGAL LOGO	SL 09/10/2015	AB					CHK ML 11/21/1990				
4	REVISED IEC NOTATIONS	MSG 11/15/2011	CMN	.X	±.1			APPD SAS 04/24/2003				
3	ADDED IEC NOTATIONS... (U1), (V1) ETC. MU95194	MSG 5/10/2010	MJS	.XX	±.02			SCALE 1=1				
2	ADDED THE OPTIONAL CORD CONNECTION MU46318	RDH 04/24/2003	DRS	.XXX	±.005		TITLE CONNECTION DIAGRAM 3Ø - DUAL VOLTAGE MOTOR	REF				
1	REDRAWN	RM 11/20/1990		.XXXX	±.0005		MAT'L.	FMF				
					±7'30"			PREV				
THIS DRAWING IN DESIGN AND DETAIL IS OUR PROPERTY AND MUST NOT BE USED EXCEPT IN CONNECTION WITH OUR WORK ALL RIGHTS OF DESIGN AND INVENTION ARE RESERVED THIS IS AN ELECTRONICALLY GENERATED DOCUMENT - DO NOT SCALE THIS PRINT							RFP	CAD FILE ee7308	SIZE A	DRAWING NO. EE7308	PAGE OF 5	REV. 5
							DIST WP					





P.O. BOX 8003  
WAUSAU, WI 54401-8003  
PH. 715-675-3311

DATA VOLTS: 460

CERTIFICATION DATA SHEET

CUSTOMER P.O. #:   
 ORDER #: A-EE7308 REFERENCE MODEL #: 184TTDR16009  
 CONN. DIAGRAM: B-SS63891-825 CAT #: N/A  
 OUTLINE: K1844214 NONE 1 CUSTOMER PART #:   
 WINDING: K1844214 NONE 1 MOUNTING: F1/F2 CAPABLE  
 SPEED:   
 TYPICAL MOTOR PERFORMANCE DATA

HP	KW	SYNC RPM	FL RPM	FRAME	ENCLOSURE	TYPE	KVA CODE	DESIGN
5	3.7	1800	1750	184HPV	DP	TDR	J	B

PH	HZ	VOLTS	AMPS	START TYPE	DUTY	INSL	S.F.	AMB	ELEV.
3	60	230/460	12.6/6.3	ACROSS-THE LINE	CONT	F	1.15	40	3300
	F.L. EFF	89.5	3/4 LD EFF	90.2	1/2 LD EFF	89.5	GTD EFF	ELECT. TYPE	
	F.L. PF	82.0	3/4 LD PF	77.0	1/2 LD PF	66.0	87.5	SQ CAGE IND RUN	

F.L. TORQUE	LR AMPS @ 460 V	L.R. TORQUE	B.D. TORQUE	F.L. RISE (°C)
15.0 LB-FT	46.0	31.5 LB-FT	210%	50.0 LB-FT
@ 3 FT.	POWER	ROTOR WK <sup>2</sup>	MAX. LOAD WK <sup>2</sup>	SAFE STALL TIME
63 DBA	72 DBA	0.45 LB-FT <sup>2</sup>	30 LB-FT <sup>2</sup>	START/SHOUR
				2
				MOTOR WGT
				100 LB.

\*\*\* SUPPLEMENTAL INFORMATION \*\*\*

DE BRACKET TYPE	ODE BRACKET TYPE	MOUNT TYPE	MOTOR ORIENTATION	SEVERE DUTY	HAZARDOUS LOCATION	DRIP COVER	SCREENS	PAINT
P-BASE	STANDARD	ROUND	SHAFT DOWN	NO	NONE	YES	NONE	BLUE (ENAMEL)

BEARINGS	GREASE	SHAFT TYPE	SPECIAL DE	SPECIAL ODE	SHAFT	MATERIAL	FRAME MATERIAL
DE BALL 207	POLYREX EM	HP	NONE	NONE	1144	STRESSPROOF (C-223)	ROLLED STEEL

THERMOSTATS	PROTECTORS	WDG RTD's	BRG RTD's	THERMISTORS	CONTROL	SPACE HEATERS
NONE	NOT	NONE	NONE	NONE	FALSE	NA

R1 (ohms/ph)	R2 (ohms/ph)	X1 (ohms/ph)	X2 (ohms/ph)	Xm (ohms/ph)	VIBRATION (in/sec)	FLOAT
1.545	1.102	3.675	5.129	93.72	0.150	ODE

* N	O	T	E	S	INVERTER TORQUE:	NONE
					INV. HP SPEED RANGE:	NONE
					ENCODER:	NONE
					BRAKE:	NONE
					FT-LB:	NA
					VOLTAGE:	NONE
					UL: V/INS, CONST UL REC	NONE
					PPR	NONE

PREPARED BY: FAREEDA DUDEKULA  
 DATE: 8/31/2018  
 FORM: 3531 REV 4 2/27/06

Data Sheet

184TDR16009

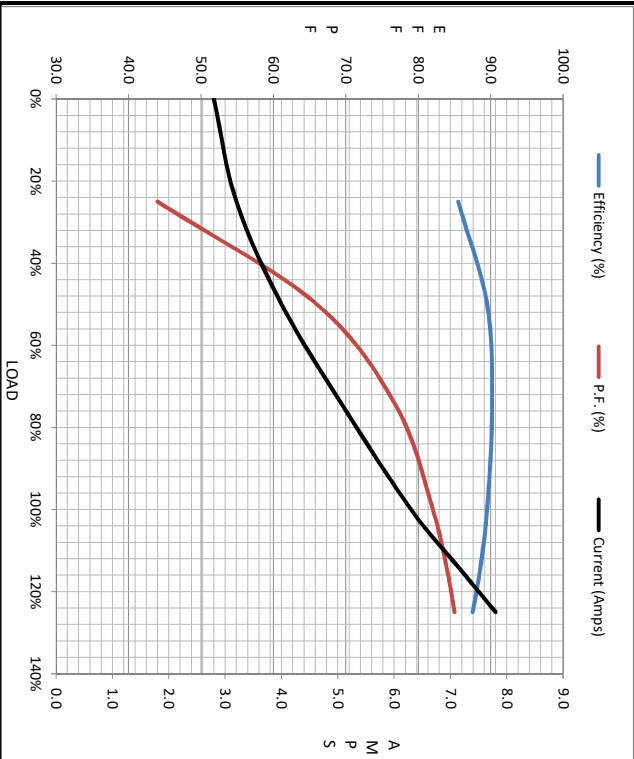


Date: 8/31/2018  
 Customer:   
 Attention:   
 Submitted by: FAREEDA DUDEKULA

184TDR16009  
 Submit  
 Data @ 460 V

Load	Motor Load Data									
	0%	25%	50%	75%	100%	115%	125%	LR		
Current (Amps)	2.80	3.2	4.0	5.1	6.3	7.2	7.8	46.0		
Torque (ft-lb)	0.00	3.7	7.4	11.2	15.0	17.5	19.0	31.5		
RPM	1800	1790	1775	1765	1750	1,745	1735	0		
Efficiency (%)		85.5	89.5	90.2	89.5	88.5	87.5			
P.F. (%)	6.5	44.0	66.0	77.0	82.0	84.0	85.0	50.0		

	Motor Speed Data					Information Block																			
	LR	Pull-Up	BD	Rated	Idle	HP	Frame	Enclosure	Construction	Voltage	Frequency	Design	LR Code letter	Service Factor	Temp Rise @ FL	Duty	Ambient	Elevation	Rotor/Shaft wk <sup>2</sup>	Ret Wdg	Sound Pressure @ 1M	VFD Rating	Outline Dwg	Com. Diag	Additional Specifications:
Speed (RPM)	0	750	1500	1750	1800	5.0	1800	DP	TDR	230/460	60	B	J	1.15	50	CONT	40	1,000	0.45	NONE	63	NONE	B-SS63891-825	A-EE7308	
Current (Amps)	46.0	43.0	26.0	6.3	2.80		184364TFC6081																		
Torque (ft-lb)	31.5	30.0	50.0	15.0	0.00																				



HP	Frame	Enclosure	Construction	Voltage	Frequency	Design	LR Code letter	Service Factor	Temp Rise @ FL	Duty	Ambient	Elevation	Rotor/Shaft wk <sup>2</sup>	Ret Wdg	Sound Pressure @ 1M	VFD Rating	Outline Dwg	Com. Diag	Additional Specifications:
5.0	1800	DP	TDR	230/460	60	B	J	1.15	50	CONT	40	1,000	0.45	NONE	63	NONE	B-SS63891-825	A-EE7308	

