

PRODUCT INFORMATION PACKET



Model No: E115826.00
Catalog No: E115826.00
ecoSaver™ General Purpose Motor, 2 & 2 HP, 3 Ph, 60 & 50 Hz, 230/460 & 190/380 V, 1800 & 1500 RPM,
56HZ Frame, DP

Operational at 208-230/460 V @60HZ



Regal and LEESON are trademarks of Regal Rexnord Corporation or one of its affiliated companies.
©2025 Regal Rexnord Corporation, All Rights Reserved. MC017097E



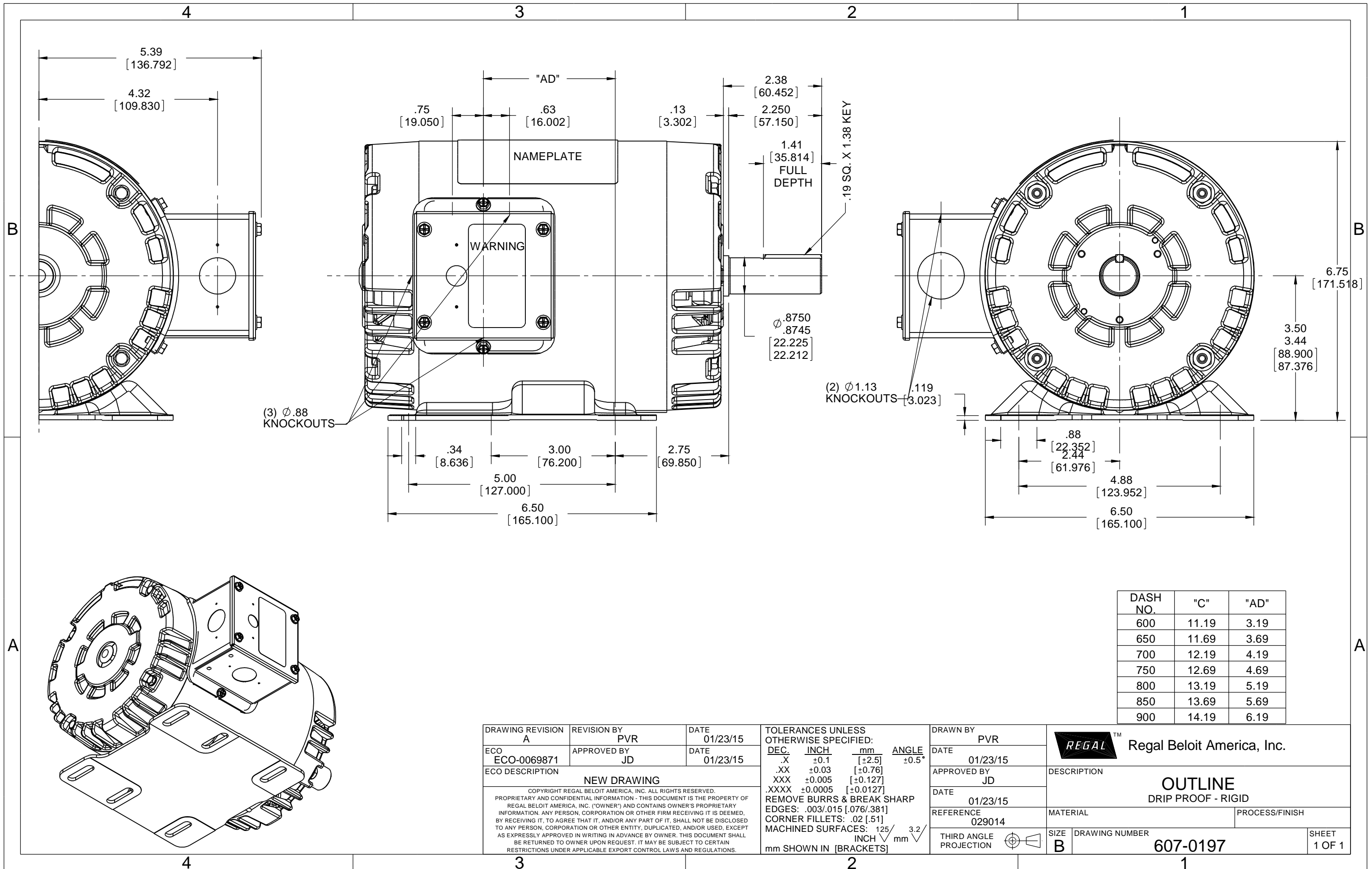


Nameplate Specifications

| | | | |
|------------------------|--------------------------------|----------------------------|--------------------------------|
| Phase | 3 | Output HP | 2 & 2 Hp |
| Output KW | 1.5 & 1.5 kW | Voltage | 230/460 & 190/380 V |
| Speed | 1745 & 1440 rpm | Service Factor | 1.15 & 1.15 |
| Frame | 56HZ | Enclosure | Drip Proof |
| Thermal Protection | Thermostat | Efficiency | 86.5 & 86.5 % |
| Ambient Temperature | 40 °C | Frequency | 60 & 50 Hz |
| Current | 5.8/2.9 & 6.8/3.4 A | Power Factor | 75.6 |
| Duty | Continuous | Insulation Class | F |
| Design Code | B | KVA Code | L |
| Drive End Bearing Size | 6205 | Opp Drive End Bearing Size | 6203 |
| UL | Recognized | CSA | Y |
| CE | Y | IP Code | 22 |
| Number of Speeds | 1 | | |

Technical Specifications

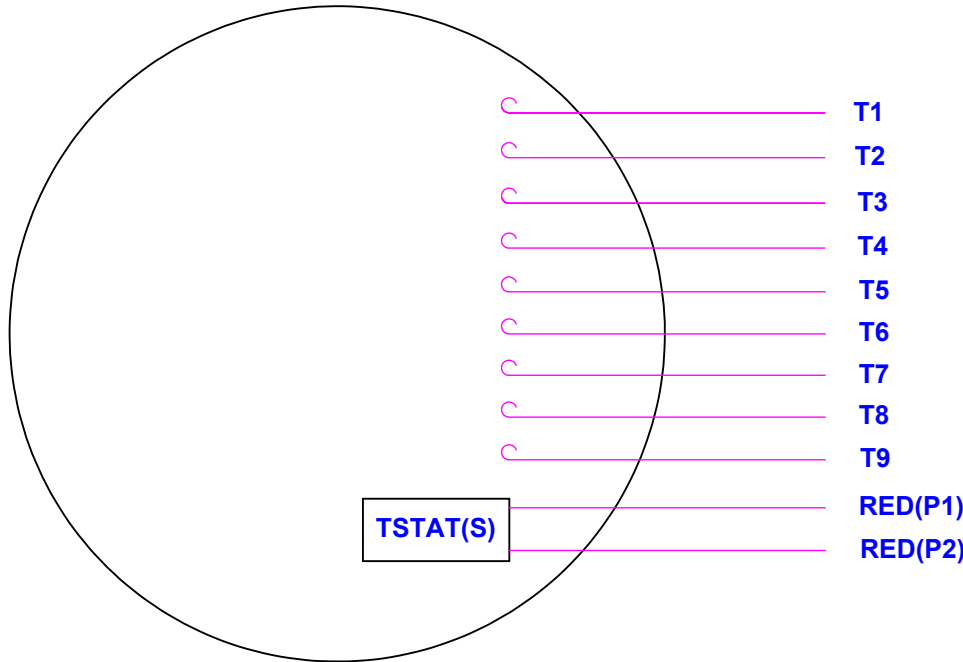
| | | | |
|-----------------------|-------------------------------------|-----------------------|-------------------------|
| Electrical Type | Squirrel Cage Inverter Rated | Starting Method | Line Or Inverter |
| Poles | 4 | Rotation | Reversible |
| Resistance Main | 1.5 Ohms | Mounting | Rigid Base |
| Motor Orientation | Horizontal | Drive End Bearing | Ball |
| Opp Drive End Bearing | Ball | Frame Material | Rolled Steel |
| Shaft Type | NEMA 145T | Overall Length | 13.69 in |
| Frame Length | 8.50 in | Shaft Diameter | 0.875 in |
| Shaft Extension | 2.25 in | Assembly/Box Mounting | F1 ONLY |
| Inverter Load | CONSTANT 10:1 | | |
| Connection Drawing | 005010.20 | Outline Drawing | 607-0197-850 |



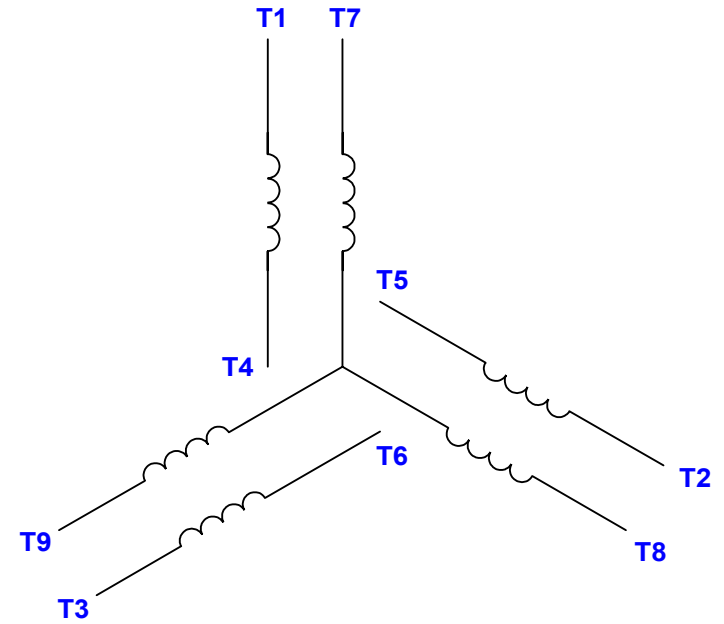
| DASH NO. | "C" | "AD" |
|----------|-------|------|
| 600 | 11.19 | 3.19 |
| 650 | 11.69 | 3.69 |
| 700 | 12.19 | 4.19 |
| 750 | 12.69 | 4.69 |
| 800 | 13.19 | 5.19 |
| 850 | 13.69 | 5.69 |
| 900 | 14.19 | 6.19 |

| | | | | | |
|-----------------------|--------------------|------------------|--|-------------------|-----------------------------------|
| DRAWING REVISION A | REVISION BY PVR | DATE 01/23/15 | TOLERANCES UNLESS OTHERWISE SPECIFIED: DEC. INCH mm ANGLE .X ±0.1 [±2.5] ±0.5° .XX ±0.03 [±0.76] .XXX ±0.005 [±0.127] .XXXX ±0.0005 [±0.0127] REMOVE BURRS & BREAK SHARP EDGES: .003/.015 [.076/.381] CORNER FILLETS: .02 [.51] MACHINED SURFACES: 125 INCH 3.2 mm mm SHOWN IN [BRACKETS] | DRAWN BY PVR | Regal Beloit America, Inc. |
| ECO ECO-0069871 | APPROVED BY JD | DATE 01/23/15 | | DATE 01/23/15 | |
| NEW DRAWING | | | COPYRIGHT REGAL BELOIT AMERICA, INC. ALL RIGHTS RESERVED. PROPRIETARY AND CONFIDENTIAL INFORMATION - THIS DOCUMENT IS THE PROPERTY OF REGAL BELOIT AMERICA, INC. ("OWNER") AND CONTAINS OWNER'S PROPRIETARY INFORMATION. ANY PERSON, CORPORATION OR OTHER FIRM RECEIVING IT IS DEEMED, BY RECEIVING IT, TO AGREE THAT IT, AND/OR ANY PART OF IT, SHALL NOT BE DISCLOSED TO ANY PERSON, CORPORATION OR OTHER ENTITY, DUPLICATED, AND/OR USED, EXCEPT AS EXPRESSLY APPROVED IN WRITING IN ADVANCE BY OWNER. THIS DOCUMENT SHALL BE RETURNED TO OWNER UPON REQUEST. IT MAY BE SUBJECT TO CERTAIN RESTRICTIONS UNDER APPLICABLE EXPORT CONTROL LAWS AND REGULATIONS. | APPROVED BY JD | MATERIAL |
| | | | | DATE 01/23/15 | REFERENCE 029014 |
| | | | THIRD ANGLE PROJECTION | SIZE B | DRAWING NUMBER 607-0197 |
| | | | | | SHEET 1 OF 1 |

VIEW FROM OUTSIDE OF MOTOR AT SWITCH END.



LINE LEADS



| VOLTAGE | L1 | L2 | L3 | JOIN & INSULATE |
|---------|-------|-------|-------|-------------------------------|
| HIGH | T1 | T2 | T3 | (T4,T7) (T5,T8) (T6,T9) |
| LOW | T1,T7 | T2,T8 | T3,T9 | T4,T5,T6 |

DRAWING REVISION H REVISION BY KVDG DATE 09/18/2024

ECO ECR-0237142 APPROVED BY DS DATE 09/19/2024

ECO DESCRIPTION ADDED P1 & P2 FOR TSTAT

COPYRIGHT REGAL BELOIT AMERICA, INC. ALL RIGHTS RESERVED. PROPRIETARY AND CONFIDENTIAL INFORMATION - THIS DOCUMENT IS THE PROPERTY OF REGAL BELOIT AMERICA, INC. ("OWNER") AND CONTAINS OWNER'S PROPRIETARY INFORMATION. ANY PERSON, CORPORATION OR OTHER FIRM RECEIVING IT IS DEEMED, BY RECEIVING IT, TO AGREE THAT IT, AND/OR ANY PART OF IT, SHALL NOT BE DISCLOSED TO ANY PERSON, CORPORATION OR OTHER ENTITY, DUPLICATED, AND/OR USED, EXCEPT AS EXPRESSLY APPROVED IN WRITING IN ADVANCE BY OWNER. THIS DOCUMENT SHALL BE RETURNED TO OWNER UPON REQUEST. IT MAY BE SUBJECT TO CERTAIN RESTRICTIONS UNDER APPLICABLE EXPORT CONTROL LAWS AND REGULATIONS.

TOLERANCES UNLESS OTHERWISE SPECIFIED:

| | | | |
|-------|---------|-----------|-------|
| DEC. | INCH | mm | ANGLE |
| .X | ±0.1 | [±2.5] | ±0.5° |
| .XX | ±0.01 | [±0.25] | |
| .XXX | ±0.005 | [±0.127] | |
| .XXXX | ±0.0005 | [±0.0127] | |

REMOVE BURRS & BREAK SHARP EDGES: .003/.015 [.076/.381] X 45°
CORNER FILLETS: R.02 [.51]
MACHINED SURFACES: 125/3.2 INCH/mm

mm SHOWN IN [BRACKETS]

DRAWN BY DBT 12/16/97

DATE

APPROVED BY KH 12/17/97

DATE

REFERENCE THIRD ANGLE PROJECTION



DESCRIPTION
CONN DIAGRAM-EXTERNAL
3 PHASE WITH PROTECTOR

| | |
|---|----------------------------|
| MATERIAL DECAL - 004014 (TSTAT) - 080582 | PROCESS/FINISH STOCK |
| SIZE A | DRAWING NUMBER 00501020 |
| SHEET 1 OF 1 | |



CERTIFICATION DATA SHEET

**1051 CHEYENNE AVE.
GRAFTON, WI 53024
PH. 262-377-8810**

CONN. DIAGRAM: 005010.20

CATALOG #: E115826.00

OUTLINE: 607-0197-850

MOUNTING: F1 ONLY

WINDING #: T634340 DR 3 D

TYPICAL MOTOR PERFORMANCE DATA

| HP | kW | SYNC. RPM | F.L. RPM | FRAME | ENCLOSURE | KVA CODE | DESIGN |
|-----|-----------|-----------|-----------|-------|-----------|----------|--------|
| 2&2 | 1.49&1.49 | 1800 | 1745&1440 | 56HZ | DP | L | B |

| PH | Hz | VOLTS | AMPS | START TYPE | DUTY | INSL | S.F. | AMB°C |
|----|-------|-----------------|-----------------|------------------|------------|------|-----------|-------|
| 3 | 60/50 | 230/460&190/380 | 5.8/2.9&6.8/3.4 | LINE OR INVERTER | CONTINUOUS | F4 | 1.15/1.15 | 40 |

| FULL LOAD EFF: | 86.5&86.5 | 3/4 LOAD EFF: | 85.6 | 1/2 LOAD EFF: | 83.4 | GTD. EFF | | ELEC. TYPE | |
|----------------|-----------|---------------|------|---------------|------|----------|--|-------------------|--|
| FULL LOAD PF: | 75.6&68 | 3/4 LOAD PF: | 64 | 1/2 LOAD PF: | 51.9 | 0 | | SQ CAGE INV RATED | |

| F.L. TORQUE | LOCKED ROTOR AMPS | L.R. TORQUE | B.D. TORQUE | F.L. RISE°C |
|-------------|-------------------|------------------|------------------|-------------|
| 6 LB-FT | 53.2 / 26.6 | 25.3 LB-FT 422 % | 28.8 LB-FT 480 % | 0 |

| SOUND PRESSURE @ 3 FT. | SOUND POWER | ROTOR WK^2 | MAX. WK^2 | SAFE STALL TIME | STARTS / HOUR | APPROX. MOTOR WGT |
|------------------------|-------------|---------------|-------------|-----------------|---------------|-------------------|
| 0 dBA | 10 dBA | 0.162 LB-FT^2 | 0.2 LB-FT^2 | 10 SEC. | 0 | 0 LBS. |

***** SUPPLEMENTAL INFORMATION *****

| DE BRACKET TYPE | ODE BRACKET TYPE | MOUNT TYPE | ORIENTATION | SEVERE DUTY | HAZARDOUS LOCATION | DRIP COVER | SCREENS | PAINT |
|-----------------|------------------|------------|-------------|-------------|--------------------|------------|---------|--------------------------|
| STANDARD | STANDARD | RIGID | HORIZONTAL | FALSE | NONE | FALSE | NONE | GREEN - LEESON WATTSaver |

| BEARINGS | | GREASE | SHAFT TYPE | SPECIAL DE | SPECIAL ODE | SHAFT MATERIAL | FRAME MATERIAL |
|----------|------|------------|-------------|------------|-------------|--------------------------|----------------|
| DE | ODE | | | | | | |
| BALL | BALL | POLYREX EM | SGL SPL EXT | SPECIAL | SPECIAL | 1144 STRESSPROOF (C-223) | ROLLED STEEL |
| 6205 | 6203 | | | | | | |

| THERMO-PROTECTORS | | | | THERMISTORS | CONTROL | SPACE HEATERS |
|-------------------|------------|----------|----------|-------------|---------|---------------|
| THERMOSTATS | PROTECTORS | WDG RTDs | BRG RTDs | | | |
| TSTATS (N/C) | NOT | NONE | NONE | NONE | FALSE | NONE VOLTS |

*
N
O
T
E
S

| |
|--|
| INVERTER TORQUE: CONSTANT 10:1 |
| INV. HP SPEED RANGE: 1.1 X BASE SPEED |
| ENCODER: NONE NONE NONE NONE NONE PPR |
| BRAKE: NONE NONE NONE P/N NONE NONE NONE NONE FT-LB NONE V NONE HZ |



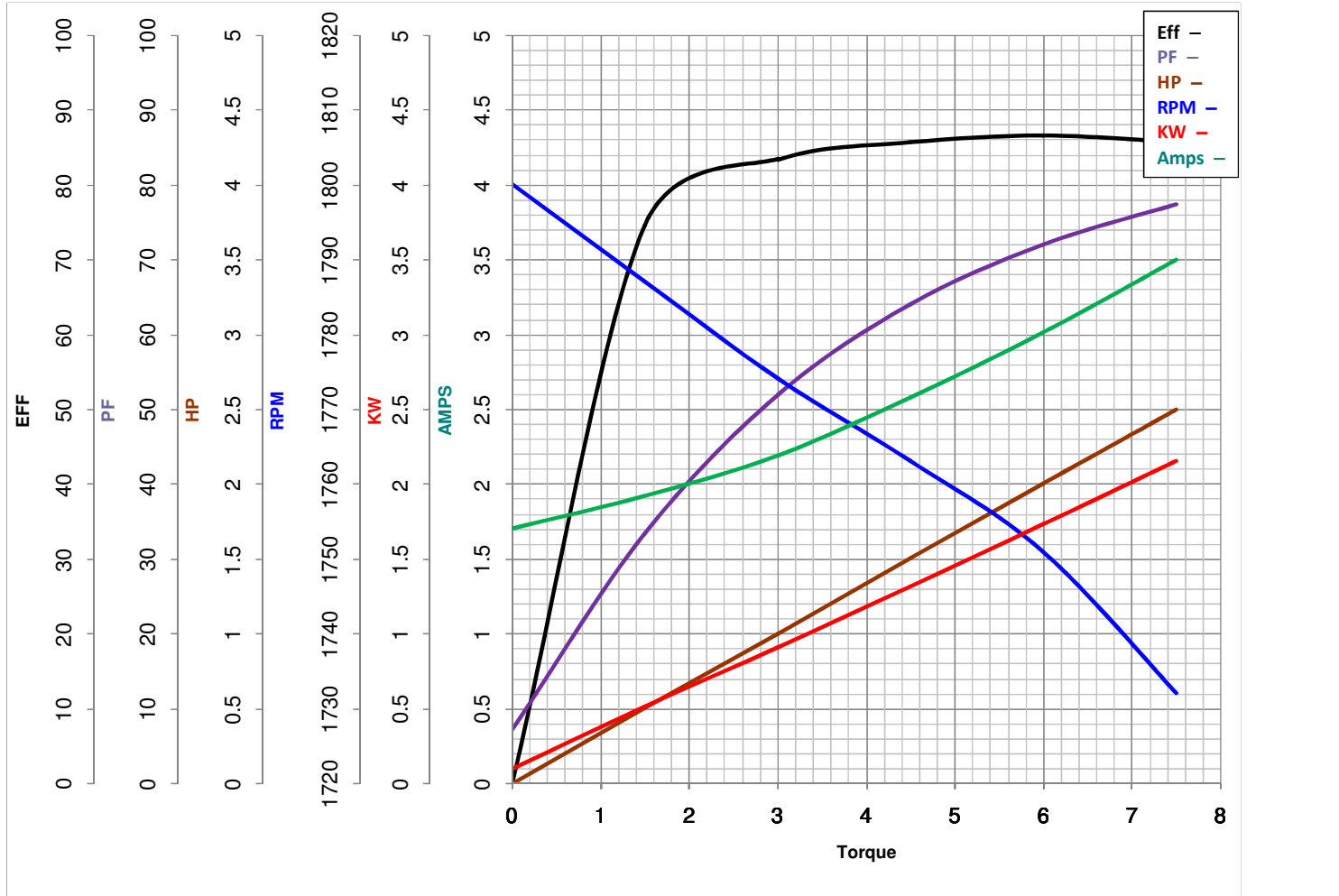
LEESON ELECTRIC CORPORATION
 TYPICAL PERFORMANCE CURVE for AC MOTOR

Model No E115826.00

Curve at 460 Volts HP 2&2 PHASE 3
60 HZ
2 HP VOLTS 230/460&190/380

Catalog No E115826.00

HZ 60&50 RPM 1745&1440



Torque in Lb.Ft

FL TORQUE 6 Lb.Ft
 BD TORQUE 28.8 Lb.Ft
 LR TORQUE 25.3 Lb.Ft

FL AMPS 5.8/2.9
 PU TORQUE 24.6 Lb.Ft
 LR AMPS 26.58

WINDING T634340-3

Date 5/23/2018

EC Declaration of Conformity

The undersigned representing
the manufacturer:

Regal Beloit America
1946 West Cook Road
Fort Wayne, IN 46818

and the authorized representative
established within the Community:

Regal Beloit Italy
Via Modena, 18
24040 Ciserano(BG) - Italy

are committed to providing customers with products that comply with applicable regulations and international protocols to which they are subject, including the requirements of the European Parliament Directive on the Harmonization of the laws relating to electrical equipment designed for use within certain voltage limits (2014/35/EU).

Regal Beloit America declares that the following product(s), to which this declaration relates, are in conformity with the relevant sections of the EC standards listed below.

This statement supersedes any statements previously issued pertaining to the product(s) listed below and is subject to change without notice.

Model No : E115826.00

(Model No. may contain prefix and/or suffix characters)

Catalog No : E115826.00

Rework No : N/A

Directives :

Low Voltage Directive 2014/35/EU

Harmonized Standards Used :

EN 60034-1: 2010 (IEC 60034-1: 2010)

EN 60034-5: 2001/A1:2007 (IEC 60034-5: 2000/A1:2006)

Authorized Representative:



Zach Stauffer
Vice President, Engineering

Authorized Representative in the Community:



Stefano Casiraghi
Technology Director, Engineering

Created on 07/08/2025

CE 25