

# PRODUCT INFORMATION PACKET

Model No: 184TTFBD6079  
Catalog No: GT1308A  
2,1200,TEFC,184TC,3/60/230/460  
Totally Enclosed Fan Cooled (TEFC)



Regal and Marathon are trademarks of Regal Beloit Corporation or one of its affiliated companies.  
©2018 Regal Beloit Corporation, All Rights Reserved. MC017097E

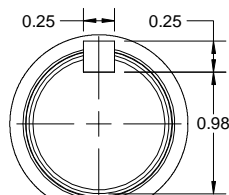
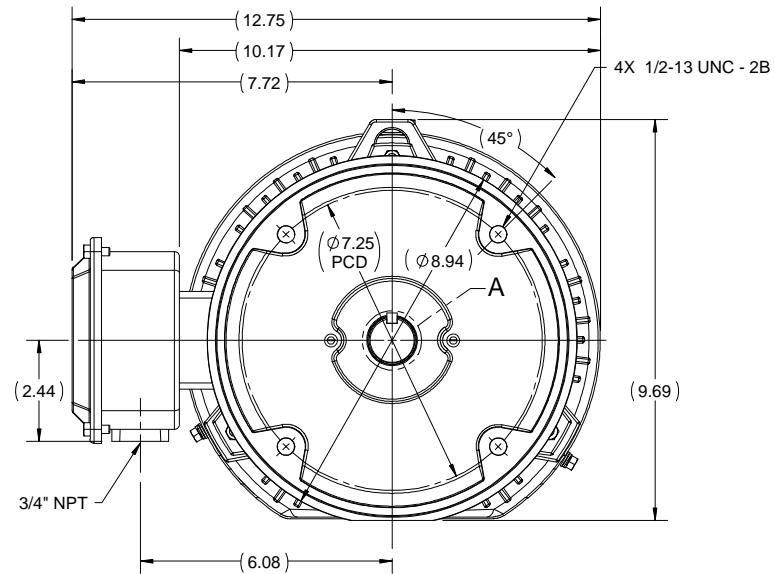
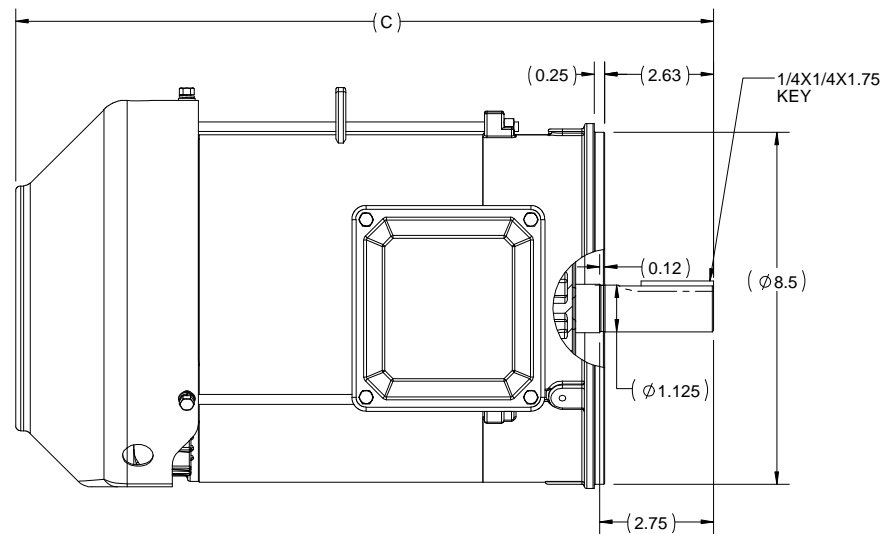
**Nameplate Specifications**

|                            |                                    |                        |                   |
|----------------------------|------------------------------------|------------------------|-------------------|
| Output HP                  | <b>2 Hp</b>                        | Output KW              | <b>1.5 kW</b>     |
| Frequency                  | <b>60 Hz</b>                       | Voltage                | <b>230/460 V</b>  |
| Current                    | <b>6.0/3.0 A</b>                   | Speed                  | <b>1173 rpm</b>   |
| Service Factor             | <b>1.15</b>                        | Phase                  | <b>3</b>          |
| Efficiency                 | <b>88.5 %</b>                      | Duty                   | <b>Continuous</b> |
| Insulation Class           | <b>F</b>                           | Design Code            | <b>B</b>          |
| KVA Code                   | <b>K</b>                           | Frame                  | <b>184TC</b>      |
| Enclosure                  | <b>Totally Enclosed Fan Cooled</b> | Overload Protector     | <b>No</b>         |
| Ambient Temperature        | <b>40 °C</b>                       | Drive End Bearing Size | <b>6206</b>       |
| Opp Drive End Bearing Size | <b>6205</b>                        | UL                     | <b>Listed</b>     |
| CSA                        | <b>Y</b>                           | CE                     | <b>Y</b>          |
| IP Code                    | <b>43</b>                          |                        |                   |

**Technical Specifications**

|                       |                                     |                       |                         |
|-----------------------|-------------------------------------|-----------------------|-------------------------|
| Electrical Type       | <b>Squirrel Cage Inverter Rated</b> | Starting Method       | <b>Line Or Inverter</b> |
| Poles                 | <b>6</b>                            | Rotation              | <b>Reversible</b>       |
| Mounting              | <b>Round</b>                        | Motor Orientation     | <b>Horizontal</b>       |
| Drive End Bearing     | <b>Ball</b>                         | Opp Drive End Bearing | <b>Ball</b>             |
| Frame Material        | <b>Rolled Steel</b>                 | Shaft Type            | <b>T</b>                |
| Overall Length        | <b>16.85 in</b>                     | Frame Length          | <b>6.85 in</b>          |
| Shaft Diameter        | <b>1.125 in</b>                     | Shaft Extension       | <b>2.75 in</b>          |
| Assembly/Box Mounting | <b>F1/F2 Capable</b>                |                       |                         |
| Outline Drawing       | <b>SS600201-184TC</b>               | Connection Diagram    | <b>EE7308</b>           |

**This is an uncontrolled document once printed or downloaded and is subject to change without notice. Date Created: 10/08/2018**



DETAIL A

|       |       |
|-------|-------|
| 182TC | 15.85 |
| 184TC | 16.85 |
| FRAME | C     |

|   |                    |                    |
|---|--------------------|--------------------|
| DRAWING REVISION<br>B   | REVISION BY<br>VS  | DATE<br>19/06/2018 |
| ECO<br>ECO-0147085  | APPROVED BY<br>SBD | DATE<br>19/06/2018 |
| ECO DESCRIPTION<br>DRAWING UPDATED  |                    |                    |
| <small>COPYRIGHT REGAL BELOIT AMERICA, INC. ALL RIGHTS RESERVED.<br/>         PROPRIETARY AND CONFIDENTIAL INFORMATION - THIS DOCUMENT IS THE PROPERTY OF<br/>         REGAL BELOIT AMERICA, INC. ("OWNER") AND CONTAINS OWNER'S PROPRIETARY<br/>         INFORMATION. ANY PERSON, CORPORATION OR OTHER FIRM RECEIVING IT IS DEEMED,<br/>         BY RECEIVING IT, TO AGREE THAT IT, AND/OR ANY PART OF IT, SHALL NOT BE DISCLOSED<br/>         TO ANY PERSON, CORPORATION OR OTHER ENTITY, DUPLICATED, AND/OR USED, EXCEPT<br/>         AS EXPRESSLY APPROVED IN WRITING IN ADVANCE BY OWNER. THIS DOCUMENT SHALL<br/>         BE RETURNED TO OWNER UPON REQUEST. IT MAY BE SUBJECT TO CERTAIN<br/>         RESTRICTIONS UNDER APPLICABLE EXPORT CONTROL LAWS AND REGULATIONS.</small> |                    |                    |

|                           |                                |                            |
|---------------------------|--------------------------------|----------------------------|
| DRAWN BY<br>PRIYA         | Regal Beloit America, Inc.     |                            |
| DATE<br>08/03/2018        |                                |                            |
| APPROVED BY<br>SBD        | DESCRIPTION<br><b>OUTLINE</b>  |                            |
| DATE<br>08/03/2018        | 182/184TC FR TEFC RS, FOOTLESS |                            |
| REFERENCE                 | MATERIAL                       | PROCESS/FINISH             |
| THIRD ANGLE<br>PROJECTION | SIZE<br>B                      | DRAWING NUMBER<br>SS600201 |
|                           |                                | SHEET<br>1 OF 1            |

EE7308

THREE PHASE  
DUAL VOLTAGE MOTOR



VIEW OF TERMINAL END

REF.  
WINDING DIAGRAM

T8Y, T2Y, T2BL, T4BX, T2EC, T2G  
T6BZ, T2B, T6BL, T4AV, T6B, T4B

OPTIONAL CORD  
CONNECTION

L1 — WHITE  
L2 — RED  
L3 — BLACK

| NO.  | REVISION                                       | BY & DATE      | CHK | ANG   | TOLERANCES<br>UNLESS SPECIFIED |        | FINISH                   | DRAWN RM 11/20/1990 |        |                    |           |        |
|--|--|----------------|-----|-------|--------------------------------|--------|--------------------------|---------------------|--------|--------------------|-----------|--------|
|  |  |                |     |       | DEC.                           | INCHES |                          |                     |        |                    |           |        |
| 5  | CHG TO REGAL LOGO                              | SL 09/10/2015  | AB  |       |                                |        |                          | CHK ML 11/21/1990   |        |                    |           |        |
| 4  | REVISED IEC NOTATIONS                          | MSG 11/15/2011 | CMN | .X    | ±.1                            |        |                          | APPD SAS 04/24/2003 |        |                    |           |        |
| 3  | ADDED IEC NOTATIONS... (U1), (V1) ETC. MU95194 | MSG 5/10/2010  | MJS | .XX   | ±.02                           |        | TITLE CONNECTION DIAGRAM | SCALE 1=1           |        |                    |           |        |
| 2  | ADDED THE OPTIONAL CORD CONNECTION MU46318     | RDH 04/24/2003 | DRS | .XXX  | ±.005                          |        | 3Ø - DUAL VOLTAGE MOTOR  | REF                 |        |                    |           |        |
| 1  | REDRAWN  | RM 11/20/1990  |     | .XXXX | ±.0005                         |        | MAT'L.                   | FMF                 |        |                    |           |        |
|  |  |                |     |       | ±7'30"                         |        |                          | PREV                |        |                    |           |        |
| THIS DRAWING IN DESIGN AND DETAIL IS OUR PROPERTY AND MUST NOT BE USED EXCEPT IN CONNECTION WITH OUR WORK ALL RIGHTS OF DESIGN AND INVENTION ARE RESERVED THIS IS AN ELECTRONICALLY GENERATED DOCUMENT - DO NOT SCALE THIS PRINT |  |                |     |       |                                |        | RFP                      | CAD FILE ee7308     | SIZE A | DRAWING NO. EE7308 | PAGE OF 5 | REV. 5 |
|  |  |                |     |       |                                |        | DIST WP                  |                     |        |                    |           |        |



Regal Beloit America, Inc.

3Ø - DUAL VOLTAGE MOTOR



**P.O. BOX 8003  
WAUSAU, WI 54401-8003  
PH. 715-675-3311**

**CERTIFICATION DATA SHEET**

**CUSTOMER:**  
**ORDER #:**  
**CONN. DIAGRAM:**  
**OUTLINE:**  
**WINDING #:**

**CUSTOMER PO #:**  
**MODEL #:**  
**CUSTOMER PART #:**  
**MOUNTING:**

**TYPICAL MOTOR PERFORMANCE DATA**

| HP      | KW        | SYNC. RPM       | F.L. RPM    | FRAME            | ENCLOSURE  | KVA CODE | DESIGN   |       |
|---------|-----------|-----------------|-------------|------------------|------------|----------|----------|-------|
| 2&1 1/2 | 1.49&1.12 | 1200            | 1173&977    | 184TC            | TEFC       | K        | B        |       |
| PH      | Hz        | VOLTS           | AMPS        | START TYPE       | DUTY       | INSL     | S.F.     | AMB°C |
| 3       | 60/50     | 230/460&190/380 | 6/3&6.2/3.1 | LINE OR INVERTER | CONTINUOUS | F7       | 1.15/1.0 | 40    |

|                       |                          |                      |                    |                      |       |                          |      |                   |
|-----------------------|--------------------------|----------------------|--------------------|----------------------|-------|--------------------------|------|-------------------|
| <b>FULL LOAD EFF:</b> | 88.5&81                  | <b>3/4 LOAD EFF:</b> | 87.5               | <b>1/2 LOAD EFF:</b> | 85.5  | <b>GTD. EFF</b>          | 87.5 | <b>ELEC. TYPE</b> |
| <b>FULL LOAD PF:</b>  | 70&67                    | <b>3/4 LOAD PF:</b>  | 63                 | <b>1/2 LOAD PF:</b>  | 51    | <b>SQ CAGE INV RATED</b> |      |                   |
| <b>F.L. TORQUE</b>    | <b>LOCKED ROTOR AMPS</b> | <b>L.R. TORQUE</b>   | <b>B.D. TORQUE</b> | <b>F.L. RISE°C</b>   |       |                          |      |                   |
| 9 LB-FT               | 47 / 23.5                | 23.5 LB-FT           | 260 %              | 31 LB-FT             | 350 % | 60                       |      |                   |

|                               |                    |                   |                  |                        |                      |                          |
|-------------------------------|--------------------|-------------------|------------------|------------------------|----------------------|--------------------------|
| <b>SOUND PRESSURE @ 3 FT.</b> | <b>SOUND POWER</b> | <b>ROTOR WK^2</b> | <b>MAX. WK^2</b> | <b>SAFE STALL TIME</b> | <b>STARTS / HOUR</b> | <b>APPROX. MOTOR WGT</b> |
| 50 DBA                        | 60 DBA             | - LB-FT^2         | - LB-FT^2        | 15 SEC.                | 2                    | - LBS.                   |

**\*\*\* SUPPLEMENTAL INFORMATION \*\*\***

| DE BRACKET TYPE        | ODE BRACKET TYPE | MOUNT TYPE | ORIENTATION | SEVERE DUTY | HAZARDOUS LOCATION      | DRIP COVER     | SCREENS | PAINT         |
|------------------------|------------------|------------|-------------|-------------|-------------------------|----------------|---------|---------------|
| C-FACE                 | STANDARD         | ROUND      | HORIZONTAL  | FALSE       | DIVISION 2 T2B          | FALSE          | NONE    | BLUE (ENAMEL) |
| BEARINGS DE ODE        | GREASE           | SHAFT TYPE | SPECIAL DE  | SPECIAL ODE | SHAFT MATERIAL          | FRAME MATERIAL |         |               |
| BALL BALL<br>6206 6205 | POLYREX EM       | T          | NONE        | NONE        | 1045 HOT ROLLED (C-204) | ROLLED STEEL   |         |               |

| THERMO-PROTECTORS |            |          |          | THERMISTORS |       |      | SPACE HEATERS |       |
|-------------------|------------|----------|----------|-------------|-------|------|---------------|-------|
| THERMOSTATS       | PROTECTORS | WDG RTDS | BRG RTDS | NONE        | FALSE | NONE | NONE          | VOLTS |
| NONE              | NOT        | NONE     | NONE     |             |       |      |               |       |

|                             |                                     |
|-----------------------------|-------------------------------------|
| <b>INVERTER</b>             | TORQUE: CONSTANT 10:1/VARIABLE 10:1 |
| <b>INV. HP SPEED RANGE:</b> | NONE                                |
| <b>ENCODER:</b>             | NONE                                |
| <b>O</b>                    | NONE                                |
| <b>T</b>                    | NONE                                |
| <b>E</b>                    | PPR                                 |
| <b>S</b>                    | NONE                                |
| <b>BRAKE:</b>               | NONE                                |
|                             | P/N NONE                            |
|                             | NONE                                |
|                             | FT-LB NONE                          |
|                             | V NONE                              |
|                             | Hz                                  |

**PREPARED BY:** Anusha Muthyala  
**DATE:** 05/29/2018 07:16:16 AM  
**FORM 3531 REV.3 02/07/99**  
\*\* Subject to change without notice.

**MARATHON ELECTRIC CORPORATION**

TYPICAL PERFORMANCE CURVE for AC MOTOR

Customer

Curve at

460

Volts

HP 2&1.5

PHASE 3

Model No 184TTFBD6079

60

HZ

VOLTS 230/460&190/380

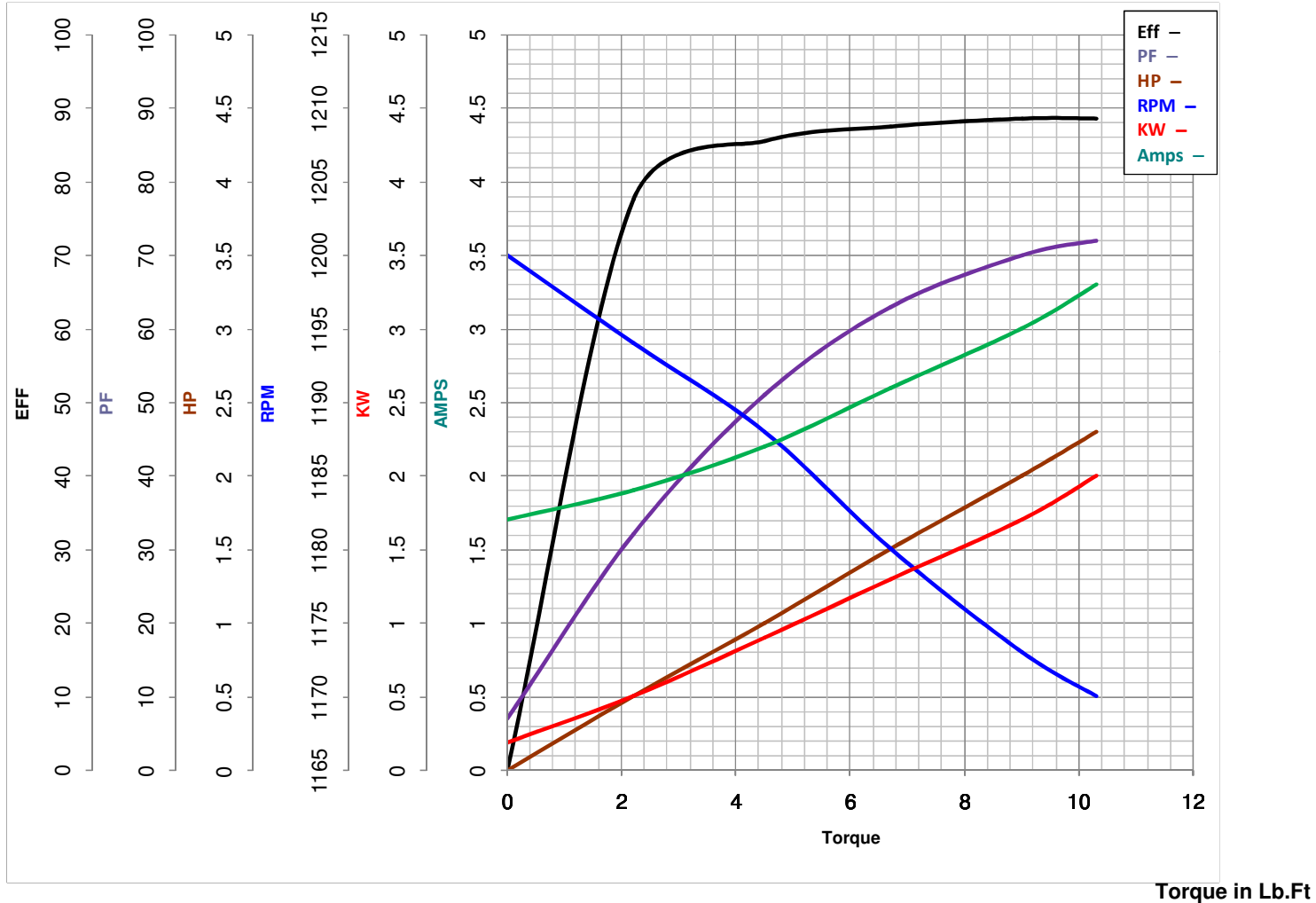
2

HP

HZ 60&50

RPM 1173&977

Catalog No GT1308A



Torque in Lb.Ft

FL TORQUE 9 Lb.Ft  
 BD TORQUE 31.0 Lb.Ft  
 LR TORQUE 23.5 Lb.Ft

FL AMPS 6/3  
 PU TORQUE 18.0 Lb.Ft  
 LR AMPS 23.5

WINDING HE31126009-3

Date 5/29/2018