

# PRODUCT INFORMATION PACKET

**marathon**<sup>®</sup>  
Motors

Model No: 444TSTDCD6060  
Catalog No: GT0089  
150,1800,DP,444TS,3/60/460PWS  
Open Drip Proof (ODP)



Regal and Marathon are trademarks of Regal Beloit Corporation or one of its affiliated companies.  
©2018 Regal Beloit Corporation, All Rights Reserved. MC017097E

**REGAL**<sup>®</sup>



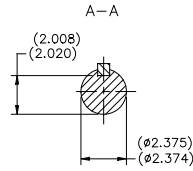
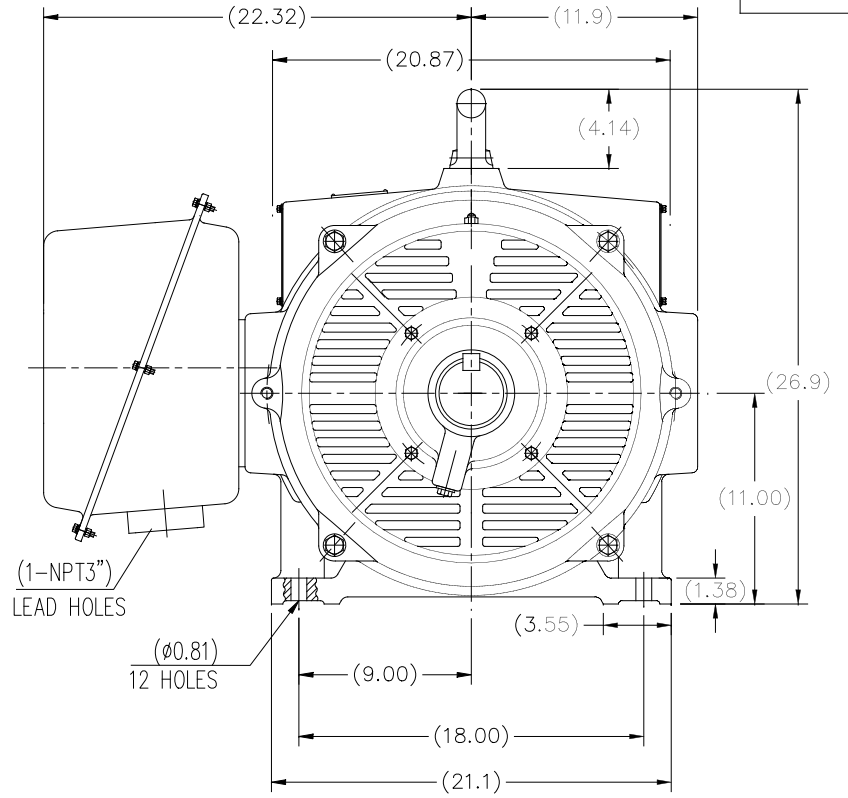
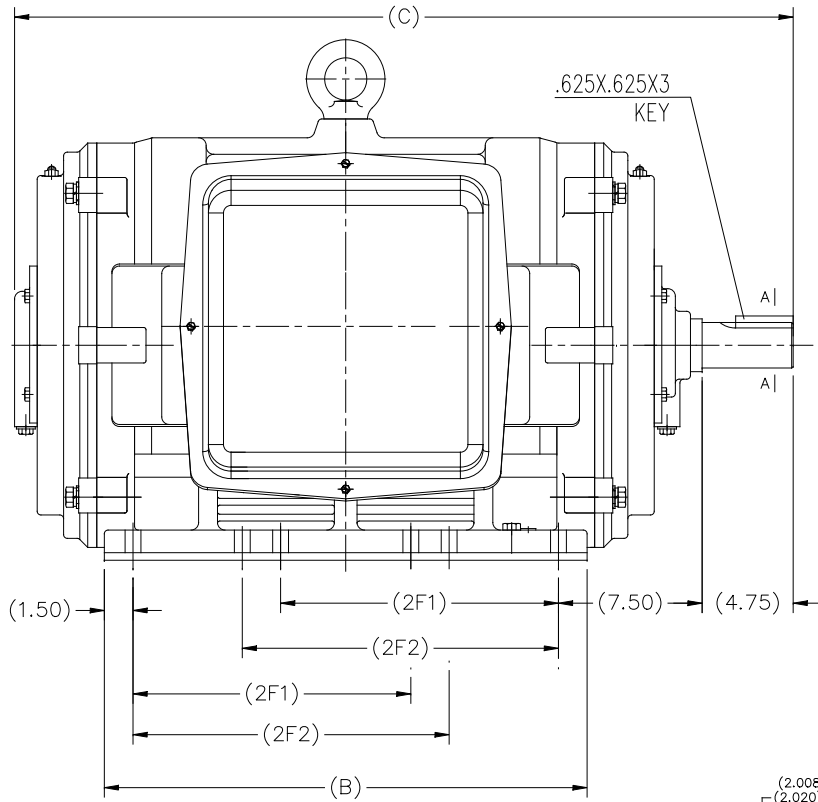
### Nameplate Specifications

Output HP	<b>150 Hp</b>	Output KW	<b>112.0 kW</b>
Frequency	<b>60 Hz</b>	Voltage	<b>460 V</b>
Current	<b>168.0 A</b>	Speed	<b>1790 rpm</b>
Service Factor	<b>1.15</b>	Phase	<b>3</b>
Efficiency	<b>95.8 %</b>	Duty	<b>Continuous</b>
Insulation Class	<b>F</b>	Design Code	<b>B</b>
KVA Code	<b>G</b>	Frame	<b>444TS</b>
Enclosure	<b>Drip Proof</b>	Overload Protector	<b>No</b>
Ambient Temperature	<b>40 °C</b>	Drive End Bearing Size	<b>6319</b>
Opp Drive End Bearing Size	<b>6317</b>	UL	<b>Recognized</b>
CSA	<b>Y</b>	CE	<b>Y</b>
IP Code	<b>22</b>		

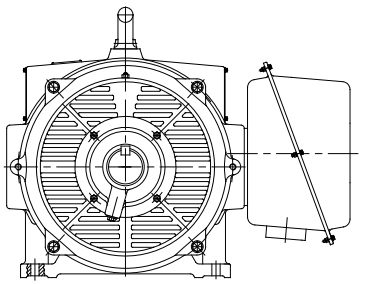
### Technical Specifications

Electrical Type	<b>Squirrel Cage Inverter Rated</b>	Starting Method	<b>Part Wdg Start Or Inverter</b>
Poles	<b>4</b>	Rotation	<b>Reversible</b>
Mounting	<b>Rigid base</b>	Motor Orientation	<b>Horizontal</b>
Drive End Bearing	<b>Ball</b>	Opp Drive End Bearing	<b>Ball</b>
Frame Material	<b>Cast Iron</b>	Shaft Type	<b>TS</b>
Frame Length	<b>25.98 in</b>	Shaft Diameter	<b>2.375 in</b>
Shaft Extension	<b>4.75 in</b>	Assembly/Box Mounting	<b>F1/F2 Capable</b>
Outline Drawing	<b>SS620756</b>	Connection Diagram	<b>EE7341C</b>

This is an uncontrolled document once printed or downloaded and is subject to change without notice. Date Created: 07/02/2018



F2 MOUNTING



444TS	40.83	25.2	14.5	16.5
445TS				
447TS	45.95	30.31	20	25
449TS				
Frame	C	B	2F1	2F2

		TOLERANCES UNLESS SPECIFIED		DRAWN 2XW 07-21-2016	
		DEC.	INCHES	CHK	
		.X	±.1	APPD	
		.XX	±.03	SCALE NONE	
		.XXX	±.005	REF	
		.XXXX	±.0005	FINISH	
NO. REVISION		BY & DATE	CHK	FINISH	
THIS DRAWING IN DESIGN AND DETAIL IS OUR PROPERTY AND MUST NOT BE USED EXCEPT IN CONNECTION WITH OUR WORK ALL RIGHTS OF DESIGN AND INVENTION ARE RESERVED THIS IS AN ELECTRONICALLY GENERATED DOCUMENT - DO NOT SCALE THIS PRINT		RFP	ANG	CAD FILE SS620756	
		DIST		SIZE B	DRAWING NO. SS620756
				PAGE 1 OF 1	REV.
					SS620756



TITLE 444/445/447/449TS FR-ODP-CAST IRON

MAT'L.

FINISH

CAD FILE SS620756

PAGE 1 OF 1

REV.

EE7341C

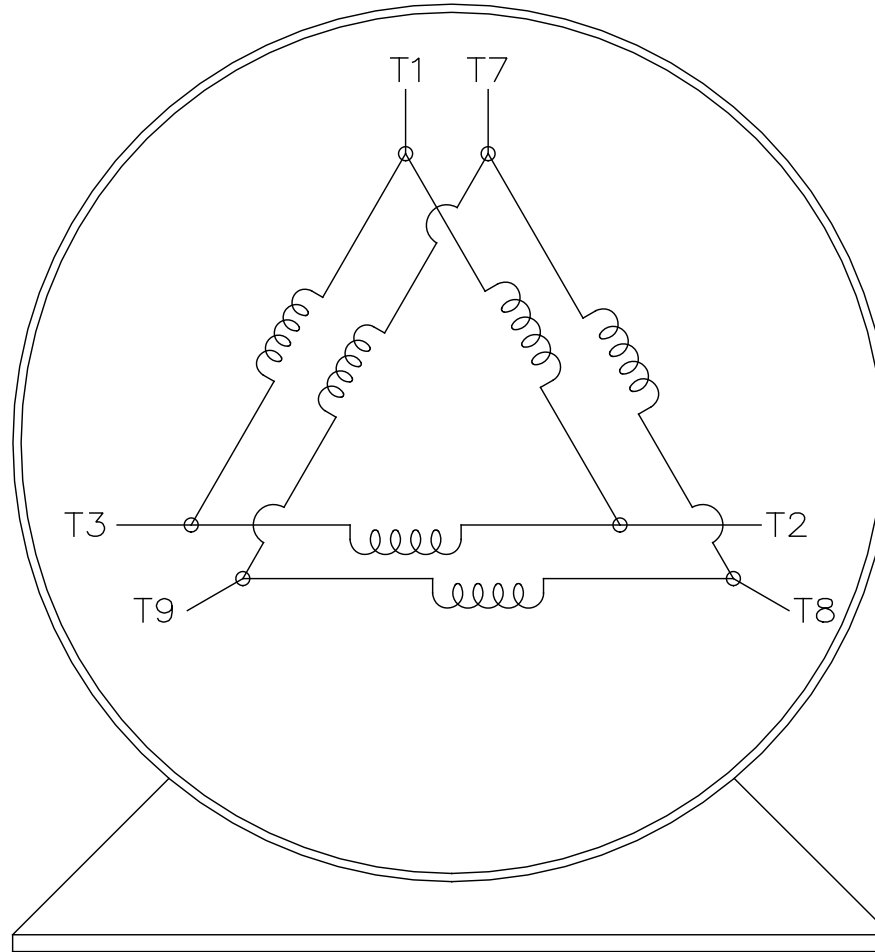
THREE PHASE – PART WINDING START  
DELTA – 6 LEADS

START


- CONNECT T1 TO LINE 1
- CONNECT T2 TO LINE 2
- CONNECT T3 TO LINE 3
- T7–T8–T9 OPEN

RUN

- CONNECT T1&T7 TO LINE 1
- CONNECT T2&T8 TO LINE 2
- CONNECT T3&T9 TO LINE 3



VIEW OF TERMINAL END

				TOLERANCES UNLESS SPECIFIED		 <b>REGAL - BELOIT CORPORATION</b>	DRAWN BLR 03-09-1998					
				DEC.	INCHES		CHK ML 03-23-1998					
				.X	± -		APPD GK 03-23-1998					
				.XX	± -		SCALE 1=1					
				.XXX	± -	TITLE	REF					
						CONNECTION DIAGRAM						
						3Ø – 6 LEADS						
D	RE-DRAWN WITH REGAL LOGO	ECO-0110493	WGJ 09-30-2016	EMH	.XXXX	± -	MAT'L.	FMF				
NO.	REVISION	BY & DATE	CHK	ANG	± -	FINISH	PREV					
THIS DRAWING IN DESIGN AND DETAIL IS OUR PROPERTY AND MUST NOT BE USED EXCEPT IN CONNECTION WITH OUR WORK ALL RIGHTS OF DESIGN AND INVENTION ARE RESERVED THIS IS AN ELECTRONICALLY GENERATED DOCUMENT – DO NOT SCALE THIS PRINT						RFP	CAD FILE EE7341C	SIZE	DRAWING NO.	PAGE	OF	REV.
						DIST		A	EE7341C			D



**P.O. BOX 8003  
WAUSAU, WI 54401-8003  
PH. 715-675-3311**

**CERTIFICATION DATA SHEET**

**CUSTOMER:** CUSTOMER PO #:  
**ORDER #:** MODEL #: 444TSTDCC6060 AA  
**CONN. DIAGRAM:** EE7341C CUSTOMER PART #:  
**OUTLINE:** SS620756 MOUNTING: F1/F2 CAPABLE  
**WINDING #:** HE32804017 1

**TYPICAL MOTOR PERFORMANCE DATA**

HP	KW	SYNC. RPM	F.L. RPM	FRAME	ENCLOSURE	KVA CODE	DESIGN	
150&125	112&93.0	1800	1790&1490	444TS	DP	G	B	
PH	Hz	VOLTS	AMPS	START TYPE	DUTY	INSL	S.F.	AMB°C
3	60/50	460&8380	168&170	PWS OR INVERTER	CONTINUOUS	F7	1.15/1.15	40

<b>FULL LOAD EFF:</b>	95.8&95.8	<b>3/4 LOAD EFF:</b>	95.8	<b>1/2 LOAD EFF:</b>	95	<b>GTD. EFF</b>	95.4	<b>ELEC. TYPE</b>
<b>FULL LOAD PF:</b>	87&87	<b>3/4 LOAD PF:</b>	85	<b>1/2 LOAD PF:</b>	78	<b>SQ CAGE INV RATED</b>		

F.L. TORQUE	LOCKED ROTOR AMPS	L.R. TORQUE	B.D. TORQUE	F.L. RISE°C
440 LB-FT	1070	880 LB-FT	200 %	1056 LB-FT
				240 %

SOUND PRESSURE @ 3 FT.	SOUND POWER	ROTOR WK^2	MAX. WK^2	SAFE STALL TIME	STARTS / HOUR	APPROX. MOTOR WGT
84 DBA	94 DBA	58 LB-FT^2	750 LB-FT^2	20 SEC.	2	1700 LBS.

**\*\*\* SUPPLEMENTAL INFORMATION \*\*\***

DE BRACKET TYPE	ODE BRACKET TYPE	MOUNT TYPE	ORIENTATION	SEVERE DUTY	HAZARDOUS LOCATION	DRIP COVER	SCREENS	PAINT
STANDARD	STANDARD	RIGID	HORIZONTAL	FALSE	NONE	FALSE	NONE	BLUE (ENAMEL)
BEARINGS DE ODE	GREASE	SHAFT TYPE	SPECIAL DE	SPECIAL ODE	SHAFT MATERIAL	FRAME MATERIAL		
BALL BALL 6319 6317	POLYREX EM	TS	NONE	NONE	1045 HOT ROLLED (C-204)	CAST IRON		

THERMO-PROTECTORS				THERMISTORS			CONTROL		SPACE HEATERS	
THERMOSTATS	PROTECTORS	WDG RTDS	BRG RTDS	NONE	FALSE	NONE	NONE	NONE	NONE	VOLTS
NONE	NOT	NONE	NONE							

**INVERTER TORQUE:** VARIABLE 10:1  
**INV. HP SPEED RANGE:** NONE

<b>ENCODER:</b>	NONE	NONE	PPR
<b>BRAKE:</b>	NONE	NONE	NONE
	NONE	P/N NONE	NONE
	NONE	NONE	NONE
	FT-LB	NONE	V NONE
		NONE	Hz

**PREPARED BY:** Anusha Muthyala  
**DATE:** 06/07/2018 07:47:59 AM  
**FORM** 3531 REV.3 02/07/99  
 \*\* Subject to change without notice.

**MARATHON ELECTRIC CORPORATION**

TYPICAL PERFORMANCE CURVE for AC MOTOR

Customer

Curve at

460

Volts

HP 150&125

PHASE 3

Model No 444TSTD6060

60

HZ

VOLTS 460&380

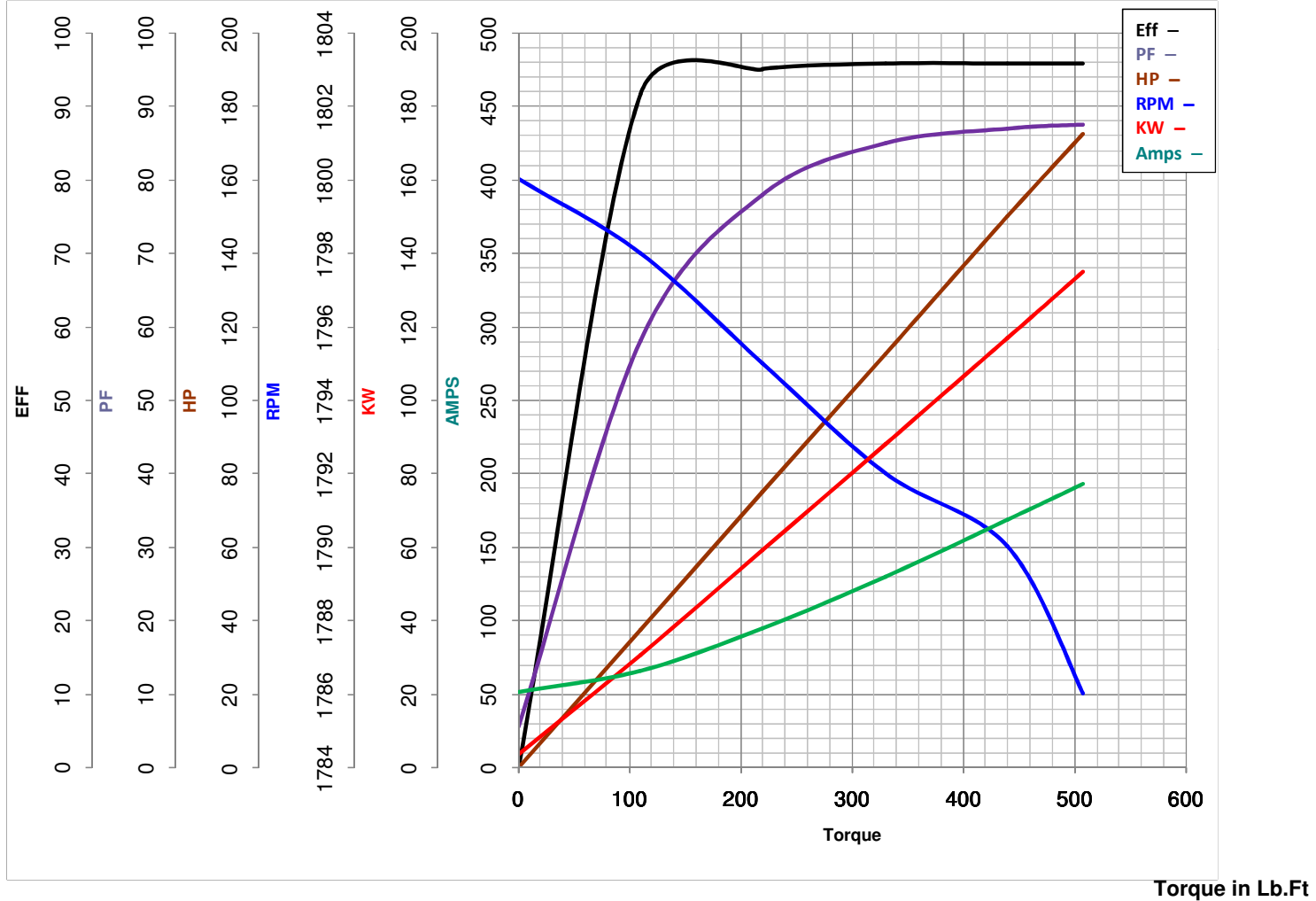
150

HP

Catalog No GT0089

HZ 60&50

RPM 1790&1490



FL TORQUE 440 Lb.Ft  
 BD TORQUE 1056 Lb.Ft  
 LR TORQUE 880 Lb.Ft

FL AMPS 168  
 PU TORQUE 740.0 Lb.Ft  
 LR AMPS 1070

WINDING HE32804017-1

Date 6/7/2018