

PRODUCT INFORMATION PACKET

Model No: 324TTFCD6526

Catalog No: E624A

40 HP, Severe Duty Motors, 3 phase, 1800 RPM, 460 V, 324T Frame, TEFC
Other Severe Duty Motors



Regal and Marathon are trademarks of Regal Beloit Corporation or one of its affiliated companies.
©2020 Regal Beloit Corporation, All Rights Reserved. MC017097E

REGAL



Nameplate Specifications

Output HP	40 Hp	Output KW	30.0 kW
Frequency	60 Hz	Voltage	460 V
Current	47.5 A	Speed	1782 rpm
Service Factor	1.15	Phase	3
Efficiency	94.1 %	Power Factor	84
Duty	Continuous	Insulation Class	H
Design Code	B	KVA Code	G
Frame	324T	Enclosure	Totally Enclosed Fan Cooled
Thermal Protection	No	Ambient Temperature	40 °C
Drive End Bearing Size	6312	Opp Drive End Bearing Size	6212
UL	Listed	CSA	Y
CE	Y	IP Code	55
Hazardous Location	DIVISION 2 T2B		

Technical Specifications

Electrical Type	Squirrel Cage Inverter Rated	Starting Method	Line Or Inverter
Poles	4	Rotation	Selective Clockwise
Resistance Main	.18 Ohms	Mounting	Rigid Base
Motor Orientation	Horizontal	Drive End Bearing	Ball
Opp Drive End Bearing	Ball	Frame Material	Cast Iron
Shaft Type	T	Shaft Diameter	2.125 in
Assembly/Box Mounting	F1/F2 CAPABLE		
Outline Drawing	SS312939	Connection Drawing	EE7300

This is an uncontrolled document once printed or downloaded and is subject to change without notice. Date Created:20/08/2020

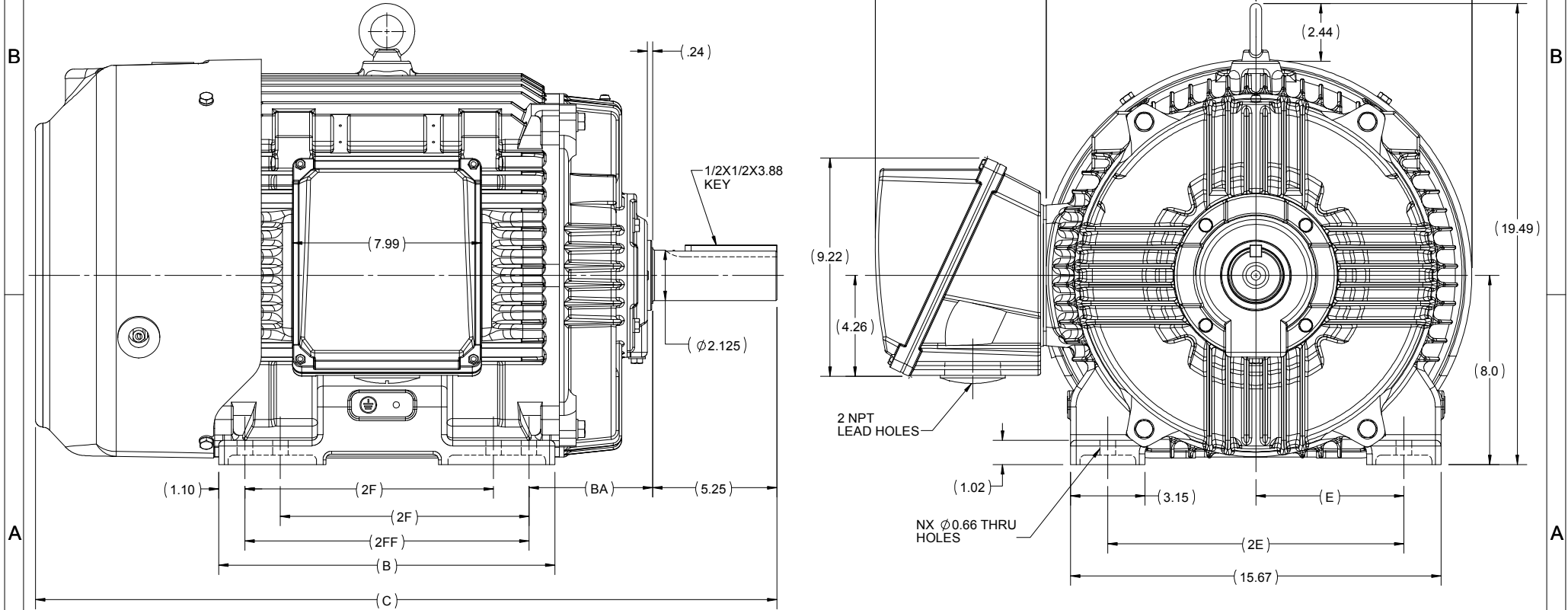
4

3

2

1

OUTLINE



324/326T	14.21	31.35	12.00	10.50				8	F1 OR F2
324T	12.71	29.85	10.50	-	5.25	6.25	12.50	4	F1 OR F2
FRAME	B	C	2FF	2F	BA	E	2E	N	MOUNTING

DRAWING REVISION C	REVISION BY BISWA	DATE 28/03/2019
ECO ECO-0163961	APPROVED BY SBD	DATE 28/03/2019
ECO DESCRIPTION DRAWING UPDATED		
<small>COPYRIGHT REGAL BELOIT AMERICA, INC. ALL RIGHTS RESERVED. PROPRIETARY AND CONFIDENTIAL INFORMATION - THIS DOCUMENT IS THE PROPERTY OF REGAL BELOIT AMERICA, INC. (OWNER) AND CONTAINS OWNERS PROPRIETARY INFORMATION. ANY PERSON, CORPORATION OR OTHER FIRM RECEIVING IT IS DEEMED, BY RECEIVING IT, TO AGREE THAT IT, AND/OR ANY PART OF IT, SHALL NOT BE DISCLOSED TO ANY PERSON, CORPORATION OR OTHER ENTITY, DUPLICATED, AND/OR USED, EXCEPT AS EXPRESSLY APPROVED IN WRITING IN ADVANCE BY OWNER. THIS DOCUMENT SHALL BE RETURNED TO OWNER UPON REQUEST. IT MAY BE SUBJECT TO CERTAIN RESTRICTIONS UNDER APPLICABLE EXPORT CONTROL LAWS AND REGULATIONS.</small>		

DRAWN BY BISWA	
DATE 24/12/2018	
APPROVED BY SBD	
DATE 24/12/2018	
REFERENCE	

Regal Beloit America, Inc.	
DESCRIPTION OUTLINE 324/326T FR-NEMA-SD & IEEE841	
MATERIAL	PROCESS/FINISH
SIZE B	DRAWING NUMBER SS312939
	SHEET 1 OF 1

4

3

2

1

**THREE PHASE - SINGLE VOLTAGE
MOTOR - CONDUIT BOX @ 'A'**

**TO REVERSE ROTATION:
INTERCHANGE ANY TWO
LINE LEAD CONNECTIONS.**

TERMINAL BLOCK WHEN SPECIFIED



VIEW OF TERMINAL END

**IF MOTOR HAS
6 LEADS**



A-9806 DECAL

**OPTIONAL CORD
CONNECTION**



DRAWING REVISION AB	REVISION BY JJB	DATE 06-27-2017
ECO ECO-0125361	APPROVED BY TB	DATE 06-27-2017
ECO DESCRIPTION UPDATED TO CURRENT STANDARDS		
<small>COPYRIGHT REGAL BELOIT AMERICA, INC. ALL RIGHTS RESERVED. PROPRIETARY AND CONFIDENTIAL INFORMATION - THIS DOCUMENT IS THE PROPERTY OF REGAL BELOIT AMERICA, INC. ("OWNER") AND CONTAINS OWNER'S PROPRIETARY INFORMATION. ANY PERSON, CORPORATION OR OTHER FIRM RECEIVING IT IS DEEMED, BY RECEIVING IT, TO AGREE THAT IT, AND/OR ANY PART OF IT, SHALL NOT BE DISCLOSED TO ANY PERSON, CORPORATION OR OTHER ENTITY, DUPLICATED, AND/OR USED, EXCEPT AS EXPRESSLY APPROVED IN WRITING IN ADVANCE BY OWNER. THIS DOCUMENT SHALL BE RETURNED TO OWNER UPON REQUEST. IT MAY BE SUBJECT TO CERTAIN RESTRICTIONS UNDER APPLICABLE EXPORT CONTROL LAWS AND REGULATIONS.</small>		



DRAWN BY DA
DATE 03-26-1993
APPROVED BY TB
DATE 03-26-1993
REFERENCE
THIRD ANGLE PROJECTION

Regal Beloit America, Inc.	
DESCRIPTION CONNECTION DIAGRAM EXTERNAL - SINGLE VOLTAGE - 3Ø MOTOR	
MATERIAL	PROCESS/FINISH
SIZE A	DRAWING NUMBER EE7300
SHEET 1 OF 1	



DATA VOLTS: 460

CERTIFICATION DATA SHEET

CONN. DIAGRAM: EE7300 REFERENCE MODEL #: 324TTFCD6526
 OUTLINE: SS312939-324T CAT #: E624A
 WINDING: HE32004007 NONE 5 MOUNTING: F1/F2 CAPABLE

TYPICAL MOTOR PERFORMANCE DATA

HP	KW	SYNC RPM	FL RPM	FRAME	ENCLOSURE	TYPE	KVA CODE	DESIGN				
40	30	1800	1782	324T	TEFC	TFC	G	B				
PH	HZ	VOLTS	AMPS	START TYPE	DUTY	INSL	S.F.	AMB (°C)	ELEV.(FT)			
3	60	460	47.5	LINE OR INVERTER	CONT	H	1.15	40	3300			
F.L. EFF		94.1	3/4 LD EFF		94.1	1/2 LD EFF		93.6	GTD EFF		ELECT. TYPE	
F.L. PF		84.0	3/4 LD PF		81.0	1/2 LD PF		72.5	93.6		SQ CAGE INV RATED	
F.L. TORQUE		LR AMPS @ 460 V		L.R. TORQUE		B.D. TORQUE		F.L. RISE (°C)				
118	LB-FT	290	212	LB-FT	180%	313	LB-FT	265%	55			
SOUND PRESSURE @		SOUND	ROTOR WK'		MAX. LOAD WK'		SAFE STALL TIME		STARTS/HOUR		APROX.	
72	dba	81 dbA	11.2	LB-FT²	275	LB-FT²	20	SEC.	2		675	LB.
*** SUPPLEMENTAL INFORMATION ***												
DE BRACKET TYPE	ODE BRACKET TYPE	MOUNT TYPE	MOTOR ORIENTATION	SEVERE DUTY	HAZARDOUS LOCATION	DRIP COVER	SCREENS	PAINT				
STANDARD	STANDARD	RIGID	HORIZONTAL	PREMIUM SEVERE DUTY	DIVISION 2 T2B	NO	NONE	BLUE (EPOXY)				
BEARINGS		GREASE	SHAFT TYPE		SPECIAL DE	SPECIAL ODE	SHAFT	MATERIAL	FRAME MATERIAL			
DE	ODE	POLYREX EM	T		NONE	NONE	1045 HOT ROLLED (C-204)	CAST IRON				
BALL	BALL											
6312	6212											
THERMOSTATS		PROTECTORS	WDG RTD's		BRG RTD's		THERMISTORS		CONTROL		SPACE	HEATERS
NONE		NOT	NONE		NONE		NONE		FALSE			NA
R1 (ohms/ph)		R2 (ohms/ph)	X1 (ohms/ph)		X2 (ohms/ph)		Xm (ohms/ph)		VIBRATION (in/sec)		FLOAT	
0.113		0.061	0.468		0.83		15.385		0.080		ODE	
* N O T E S *						If Inverter equals NONE, contact factory for further information						
						INVERTER TORQUE: CONSTANT 20:1/VARIABLE 10:1						
						INV. HP SPEED RANGE: NONE						
						ENCODER: NONE						
						NONE PPR						
PREPARED BY: ANUSHA M					BRAKE: NONE		NONE		NONE			
DATE: 3/18/2020					FT-LB: NA		VOLTAGE: NONE		HZ:			

FORM: 3531 REV_4 2/27/06
 ** Subject to change without notice.

