

TE-3-MD-HC SERIES - 1/25 HP

APPLICATIONS

Operating reliability and flexibility are the hallmarks of the Little Giant TE-3-MD-HC Series chemical transfer pumps. Typical industrial applications include corrosive solutions and solvents with high abrasive concentrations. This pump also features a 1/25 hp enclosed, fan-cooled (TEFC) motor for added safety and heavy-duty performance.

FEATURES

- 1/25 hp TEFC motor
- Glass-filled polyphenylene sulfide magnet housing and volute
- 1.1 specific gravity
- Fluoroelastomer (FKM) O-ring
- Ceramic thrust washers and shaft
- Run dry capability up to 8 hours



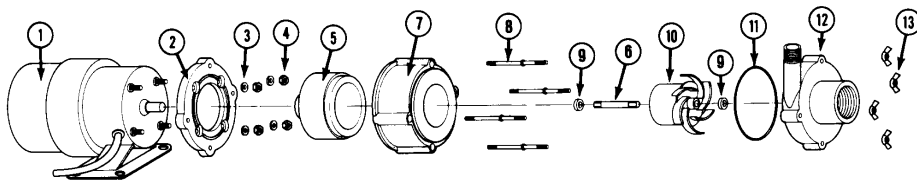
TE-3-MD-HC



SERIES SPECIFICATIONS

Item No.	Model	Discharge	HP	Volts	Hz	Amps	Watts	Gallons per minute (Liter per minute) @ Height					Shut-Off	PSI	Weight lbs (Kg)
								1'	3'	6'	9'	15'			
581614	TE-3-MD-HC	1/2" MNPT	1/25	230	50/60	1.3	107	9.8 (37.1)	9.2 (34.8)	8.1 (30.7)	6.5 (24.6)	2.6 (9.8)	16.3 (4.97 m)	7.1	7.75 (3.51 Kg)
581604	TE-3-MD-HC	1/2" MNPT	1/25	115	60	1.3	107	9.8 (37.1)	9.2 (34.8)	8.1 (30.7)	6.5 (24.6)	2.6 (9.8)	16.3 (4.97 m)	7.1	7.75 (3.51 Kg)

NOTE: Parts A-F contact fluid



REPLACEMENT PARTS

Item	Part No.	Description
1	977339	Motor, 115 volt
	977915	Motor, 230 volt
2	180042	Adaptor, w/base
3	921075	Washer, flat, #8
4	920006	Nut, hex, #8-32
5	182602	Drive magnet assembly
6	180057	Shaft, ceramic
7	182006	Housing, magnet
8	911403	Stud, collared
9	921077	Washer, thrust
10	181148	Impeller w/bushing assy.
	181151	Impeller w/mica bushing
11	924008	O-ring, Fluoroelastomer (FKM)
12	180080	Volute
13	920003	Nut, wing #8-32

TE-3-MD-HC SERIES - 1/25 HP

PERFORMANCE DATA

