

PRODUCT SPECIFICATIONS

E2X1A-S48, E2XHD-BLK, E2XHD-CMB, E2XHD-COV, E2XHD-BRK

e2XHD High-Density Universal Angled Panels & Accessories (For customers in North America and Latin America)

APPLICATION

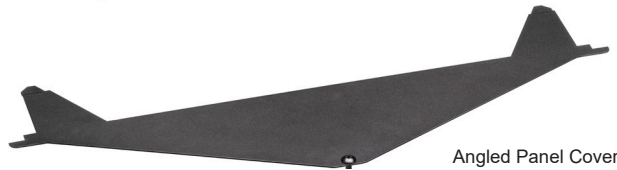
The e2XHD Patching System is an easy-to-connect, high-density solution that provides simple termination and improved cable routing for shielded, UTP, and fiber applications. Cassettes (sold separately) quickly snap-in and pull out of the high-density, angled panel, making installation easier than ever. Panel covers and blank cassette inserts offer extra protection from dust and damage. Copper cassettes are available either on pre-terminated trunks or with field-terminated connectors. Fiber cassettes are pre-terminated.



e2XHD Angled Panel - 1RU



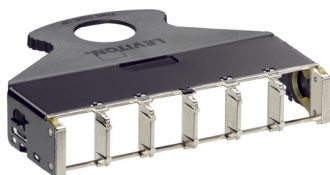
Rear Cable Manager



Angled Panel Cover



Cassette Blank



Cassette (not to scale)

SPECIFICATION

Panels shall be constructed of 20-gauge steel with a black powder-coated finish. Port identification shall be included. Panels shall accept shielded, UTP, and fiber e2XHD cassettes, and hold up to 48 duplex fiber channels or 48 copper ports in a 1RU space. Copper and fiber cassettes shall snap into the rear of the panel and shall require no tools to remove. Panel shall meet all ANSI/TIA-568.0-D requirements and all applicable standards.

FEATURES & BENEFITS

- Panels allow a mix-and-match of shielded, UTP, and fiber e2XHD cassettes
- Alignment tabs ensure upright insertion of cassettes
- To remove cassettes from the panel, simply pull out the handle using the release latch
- Rear Cable Manager supports copper or fiber cables, andsnaps directly to panel without tools
- Cassette Blanks available for unused cassette openings
- Panel Cover minimizes dust or debris

DESIGN CONSIDERATIONS

- Cable manager and cover sold separately from panel
- Panels mount on standard 19-inch relay rack or cabinet
- Cable clamp mounting kits are available to provide strain relief for incoming fiber trunk cables.
- When routing copper cable, one Rear Cable Manager is recommended for every 2RU of panel for better rear access
- Angled Panel Cover can mount to top or bottom of panels
- Panels include #12-24 fasteners and appropriate parts to bond panel to rack/cabinet

STANDARDS & REGULATIONS

- Patch panel: ANSI/TIA-568.0-D

MECHANICAL SPECIFICATIONS

Material:	20-gauge steel, powder-coated black
Capacity:	1RU: 48-duplex fiber channels or 48-copper ports
	1RU: Accepts up to 8-copper and/or fiber cassettes (12-fiber LC-MTP [®] , 24-fiber MTP-MTP), or 4 24-fiber LC-MTP cassettes

COUNTRY OF ORIGIN

USA:	E2XHD-BLK
Mexico:	E2X1A-CMB, E2XHD-COV
Taiwan:	E2X1A-S48
China:	E2XHD-BRK

WARRANTY INFORMATION

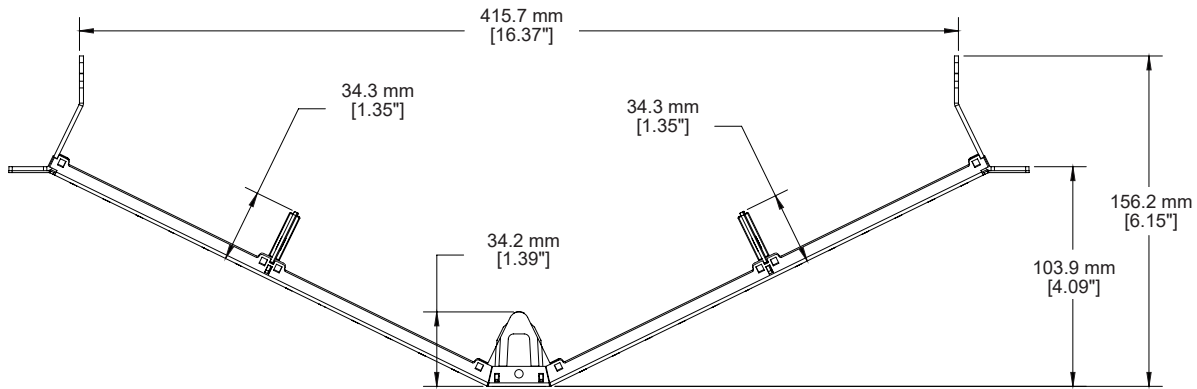
For Leviton product warranties, go to Leviton.com/ns/warranty

E2X1A-S48, E2XHD-BLK, E2XHD-CMB, E2XHD-COV, E2XHD-BRK

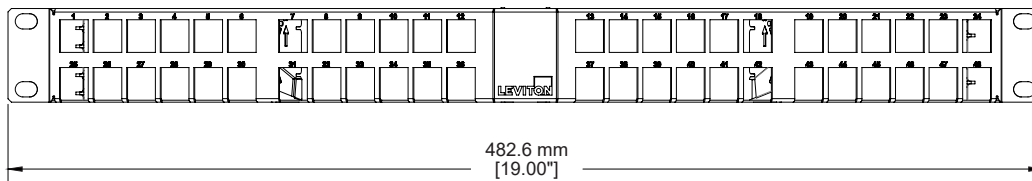
PRODUCT SPECIFICATIONS

E2X1A-S48, E2XHD-BLK, E2XHD-CMB, E2XHD-COV, E2XHD-BRK

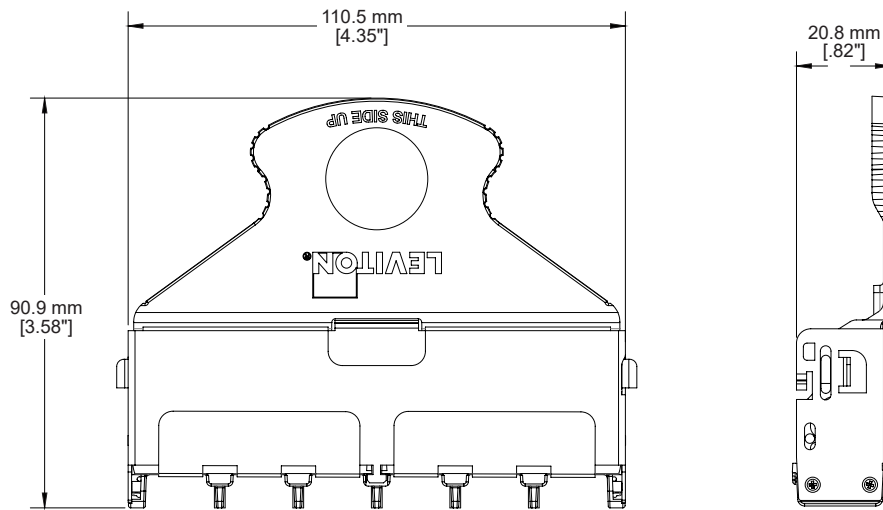
E2X1A-S48, E2XHD-BLK, E2XHD-CMB, E2XHD-COV, E2XHD-BRK



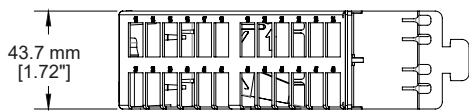
e2XHD High-Density Angled Panel – Top View



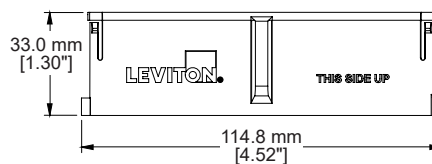
1RU Panel — Front View



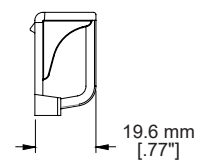
e2XHD Cassette



1RU Panel — Side View

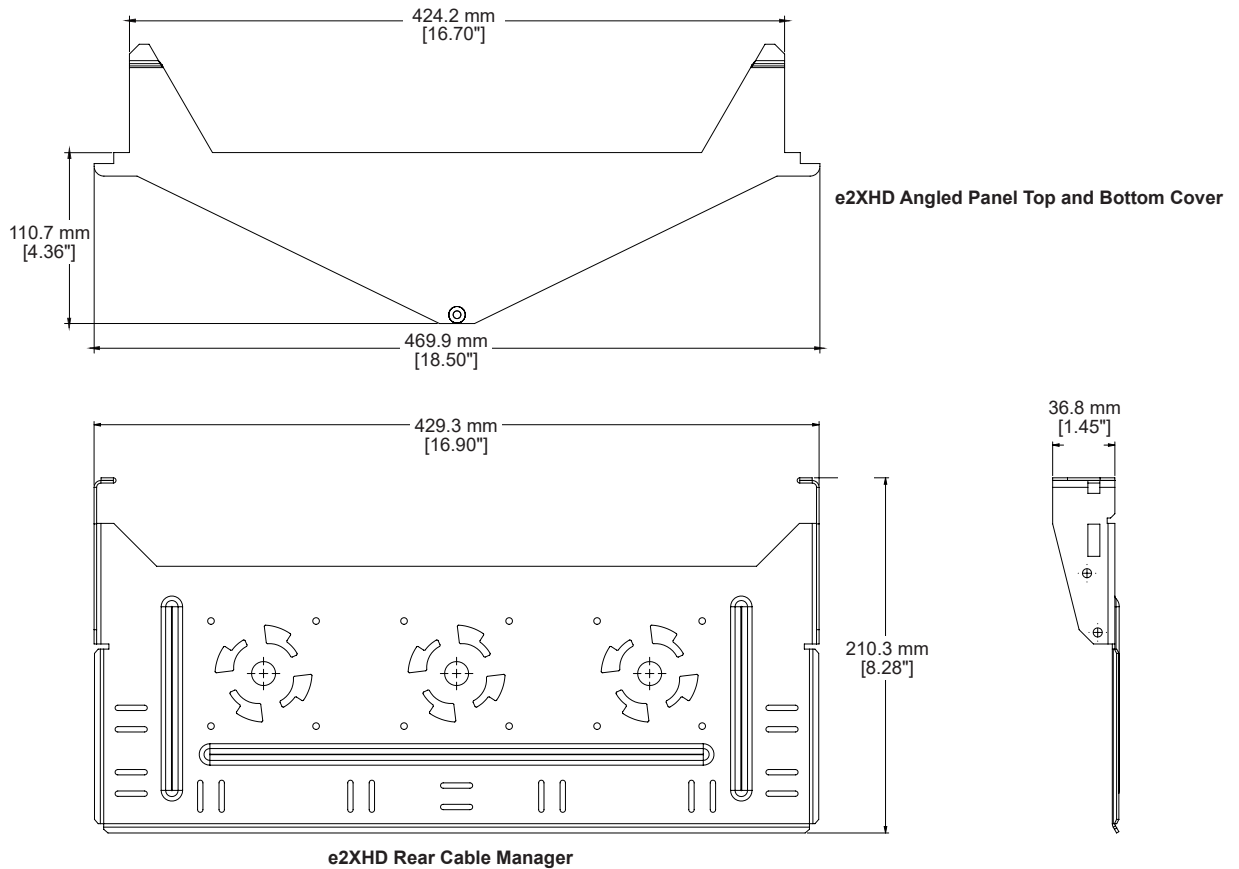


e2XHD Cassette Blank



PRODUCT SPECIFICATIONS

E2X1A-S48, E2XHD-BLK, E2XHD-CMB, E2XHD-COV, E2XHD-BRK



E2X1A-S48, E2XHD-BLK, E2XHD-CMB, E2XHD-COV, E2XHD-BRK

e2XHD PATCHING SYSTEM	
Description	Part No.
e2XHD 1RU High-Density Universal Angled Panel, accepts shielded, UTP, and fiber cassettes	E2X1A-S48
e2XHD Rear Cable Manager for Angled Panel, includes four quarter-inch round cable management rings	E2XHD-CMB
e2XHD Cassette Blank	E2XHD-BLK
e2XHD Angled Panel Cover	E2XHD-COV
e2XHD Empty Cassette	E2XHD-BRK

e2XHD RELATED PRODUCTS	
Description	Part No.
Universal ORU Patch Cord Cable Manager (bag of 2)	5RCMT-VFG
Universal OPT-X™ Clamp Kit, single cable grommet (mounts to rear cable manager)	5RCMP-KIT
Universal OPT-X Clamp Kit, multiple cable grommet (mounts to rear cable manager)	5RCMP-KT2
Universal Clamp Kit, single and multiple cable grommet (for rack mounting)	5RCMR-KIT

For further support information, visit Leviton.com/ns/support