

PRODUCT INFORMATION PACKET

Model No: 145TTDR5706
Catalog No: Y452
1 1/2,1800/1200,DP,145T,3/60/460
Other Purpose



Regal and Marathon are trademarks of Regal Beloit Corporation or one of its affiliated companies.
©2018 Regal Beloit Corporation, All Rights Reserved. MC017097E





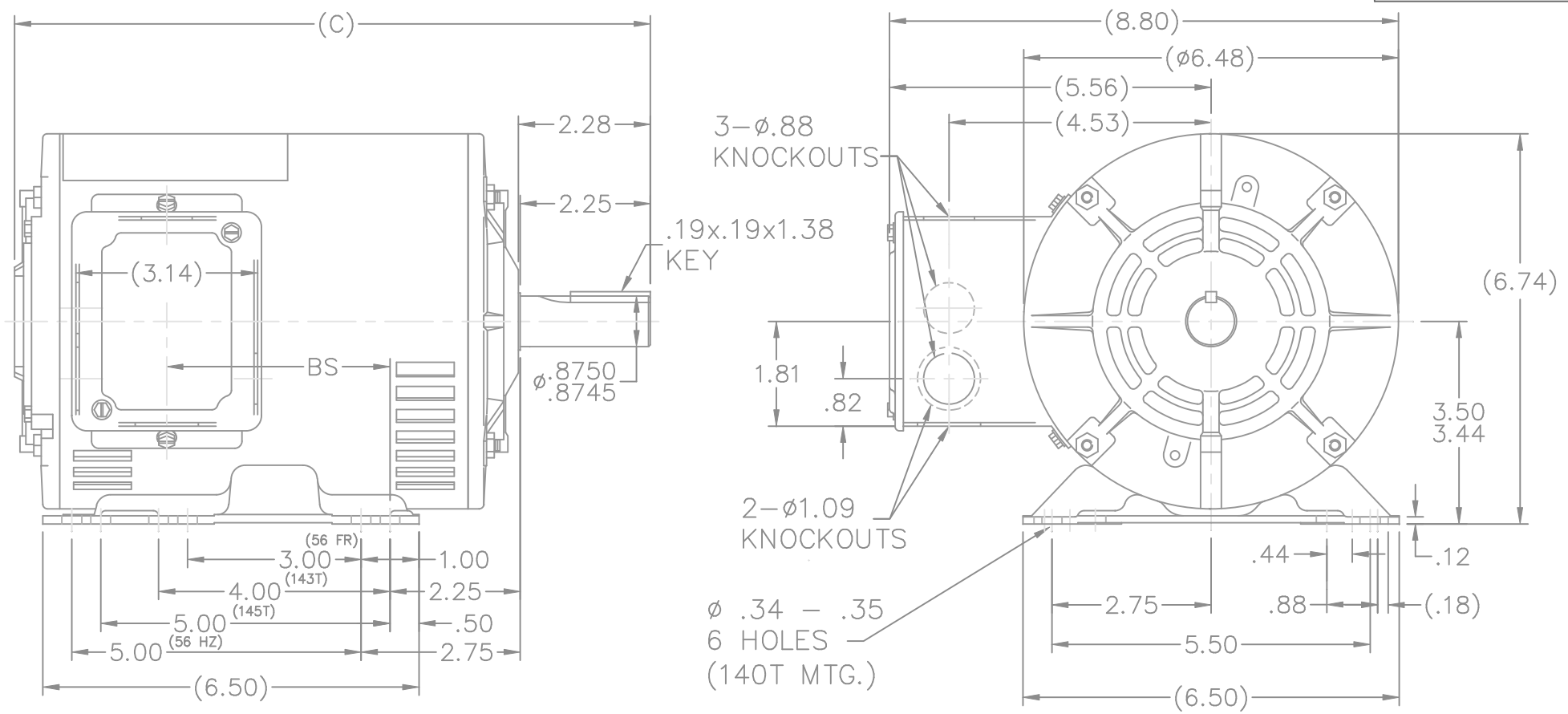
Nameplate Specifications

Output HP	1.5,0.67 Hp	Output KW	1.12 kW
Frequency	60 Hz	Voltage	460 V
Current	2.3,1.3 A	Speed	1725,1140 rpm
Service Factor	1.15	Phase	3
Efficiency	78.5 %	Duty	CONTINUOUS
Insulation Class	B	Design Code	2VT
KVA Code	H	Frame	145T
Enclosure	DP	Overload Protector	NOT
Ambient Temperature	40 °C	Drive End Bearing Size	6205
Opp Drive End Bearing Size	6203	UL	Recognized
CSA	Y	CE	Y
IP Code	22		

Technical Specifications

Electrical Type	SQ CAGE IND RUN	Starting Method	ACROSS THE LINE
Poles	4//6	Rotation	REV
Mounting	RIGID	Motor Orientation	HORIZONTAL
Drive End Bearing	BALL	Opp Drive End Bearing	BALL
Frame Material	ROLLED STEEL	Shaft Type	T
Overall Length	12.99 in	Frame Length	9.06 in
Shaft Diameter	0.88 in	Shaft Extension	2.28 in
Assembly/Box Mounting	F1 ONLY		
Outline Drawing	A-100085-906	Connection Diagram	A-EE7317

This is an uncontrolled document once printed or downloaded and is subject to change without notice. Date Created: 04/05/2018

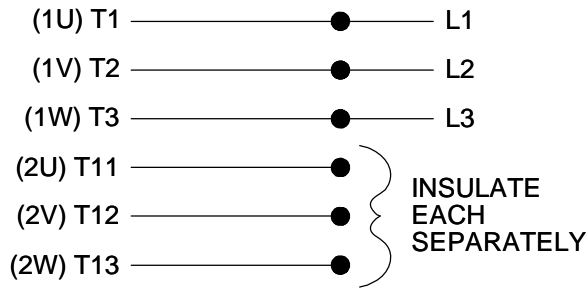


DASH	FR.	C	BS/140T	DASH	FR.	C	BS/140T
				806	140T/56HZ	11.99	4.86
				856	"	12.49	5.36
706	140T/56HZ	10.99	3.86	906	"	12.99	5.86
756	"	11.49	4.36	956	"	13.49	6.36

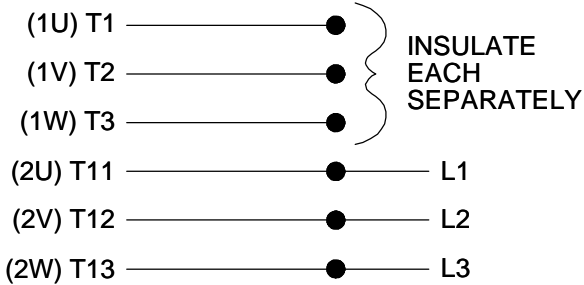
NOTES:
 1. CONDUIT BOX CAN BE ROTATED 180°.
 2. NAMPLATE READ FROM CONDUIT BOX SIDE.

				TOLERANCES UNLESS SPECIFIED		MARATHON ELECTRIC		DRAWN GK 02-04-1988	
				DEC.	INCHES			CHK ML 02-04-1988	
				.X	±.1			APPD FG 02-04-1988	
				.XX	±.03	TITLE OUTLINE		SCALE 3=8	
2	REDRAWN IN AUTOCAD	TAT 06-29-2004	ML	.XXX	±.005	140T & 56HZ - DR.PR.		REF	
1	NEW DRAWING	GK 02-02-1988		.XXXX	±.0005	MAT'L.		FMF	
NO.	REVISION	BY & DATE	CHK	ANG	±7'30"	FINISH		PREV	
THIS DRAWING IN DESIGN AND DETAIL IS OUR PROPERTY AND MUST NOT BE USED EXCEPT IN CONNECTION WITH OUR WORK ALL RIGHTS OF DESIGN AND INVENTION ARE RESERVED THIS IS AN ELECTRONICALLY GENERATED DOCUMENT - DO NOT SCALE THIS PRINT				RFP		CAD FILE 100085		SIZE	DRAWING NO. PAGE OF REV.
				DIST	WP			A	100085 2

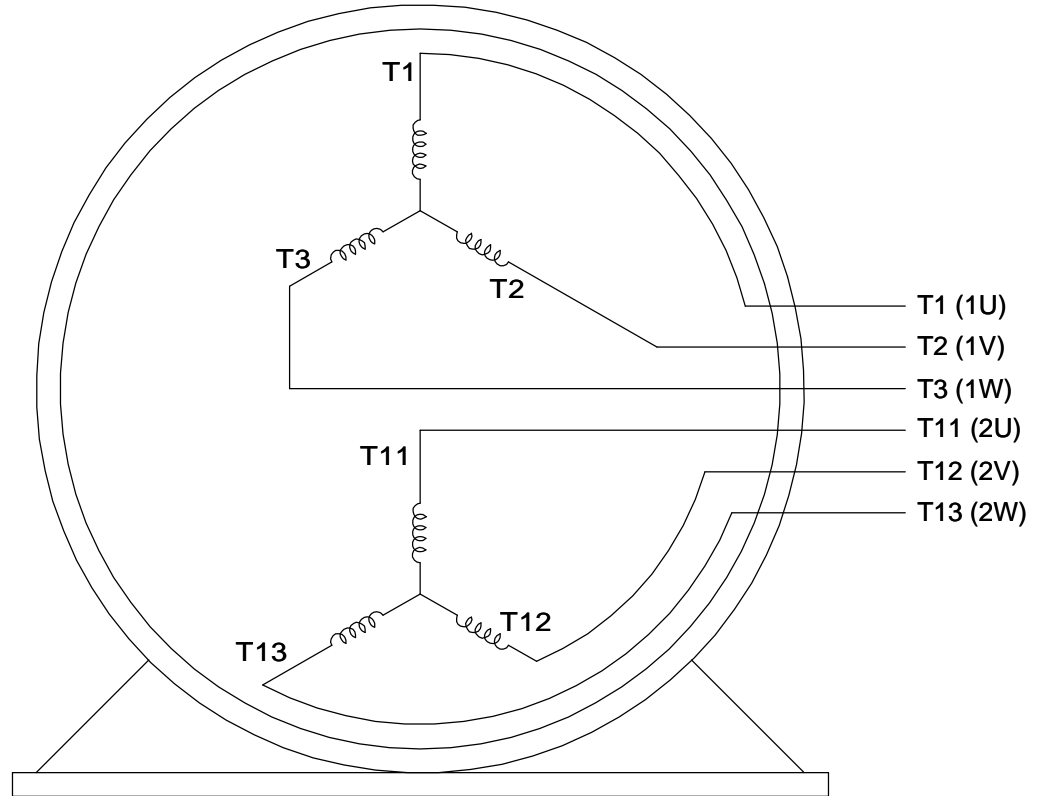
LOW SPEED



HIGHSPEED



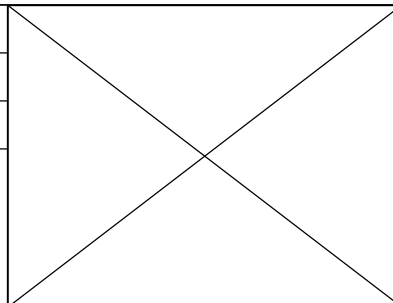
**THREE PHASE, SINGLE VOLT, 6 LEAD
2 SPEED REVERSIBLE MOTOR**


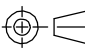


VIEW OF TERMINAL END

TO REVERSE ROTATION ON
EITHER SPEED: INTERCHANGE
ANY 2 LEADS ON THE
WINDING IN USE.

DRAWING REVISION C	REVISION BY JJB	DATE 10-25-2017
ECO ECO-0132917	APPROVED BY TLB	DATE 10-30-2017
ECO DESCRIPTION REVISED PER ECO & UPDATED TO STANDARDS		
<small>COPYRIGHT REGAL BELOIT AMERICA, INC. ALL RIGHTS RESERVED. PROPRIETARY AND CONFIDENTIAL INFORMATION - THIS DOCUMENT IS THE PROPERTY OF REGAL BELOIT AMERICA, INC. ("OWNER") AND CONTAINS OWNER'S PROPRIETARY INFORMATION. ANY PERSON, CORPORATION OR OTHER FIRM RECEIVING IT IS DEEMED, BY RECEIVING IT, TO AGREE THAT IT, AND/OR ANY PART OF IT, SHALL NOT BE DISCLOSED TO ANY PERSON, CORPORATION OR OTHER ENTITY, DUPLICATED, AND/OR USED, EXCEPT AS EXPRESSLY APPROVED IN WRITING IN ADVANCE BY OWNER. THIS DOCUMENT SHALL BE RETURNED TO OWNER UPON REQUEST. IT MAY BE SUBJECT TO CERTAIN RESTRICTIONS UNDER APPLICABLE EXPORT CONTROL LAWS AND REGULATIONS.</small>		



DRAWN BY LZ	 Regal Beloit America, Inc.	
DATE 01-05-1994		
APPROVED BY GK	DESCRIPTION CONN DIAGRAM-INTERNAL	
DATE 01-17-1994	3 PHASE - SINGLE - 2 SPEED REVERSIBLE	
REFERENCE	MATERIAL	PROCESS/FINISH
THIRD ANGLE PROJECTION 	SIZE A	DRAWING NUMBER EE7317
		SHEET 1 OF 1

