

PRODUCT INFORMATION PACKET



Model No: M1145024.00

Catalog No: M1145024.00

Parallel Shaft Gearmotor, 0.06 HP, 1 Ph, 60/50 Hz, 115 V, 30 RPM, 38 Frame, TENV



Regal and Leeson are trademarks of Regal Rexnord Corporation or one of its affiliated companies.

©2023 Regal Rexnord Corporation, All Rights Reserved. MC017097E





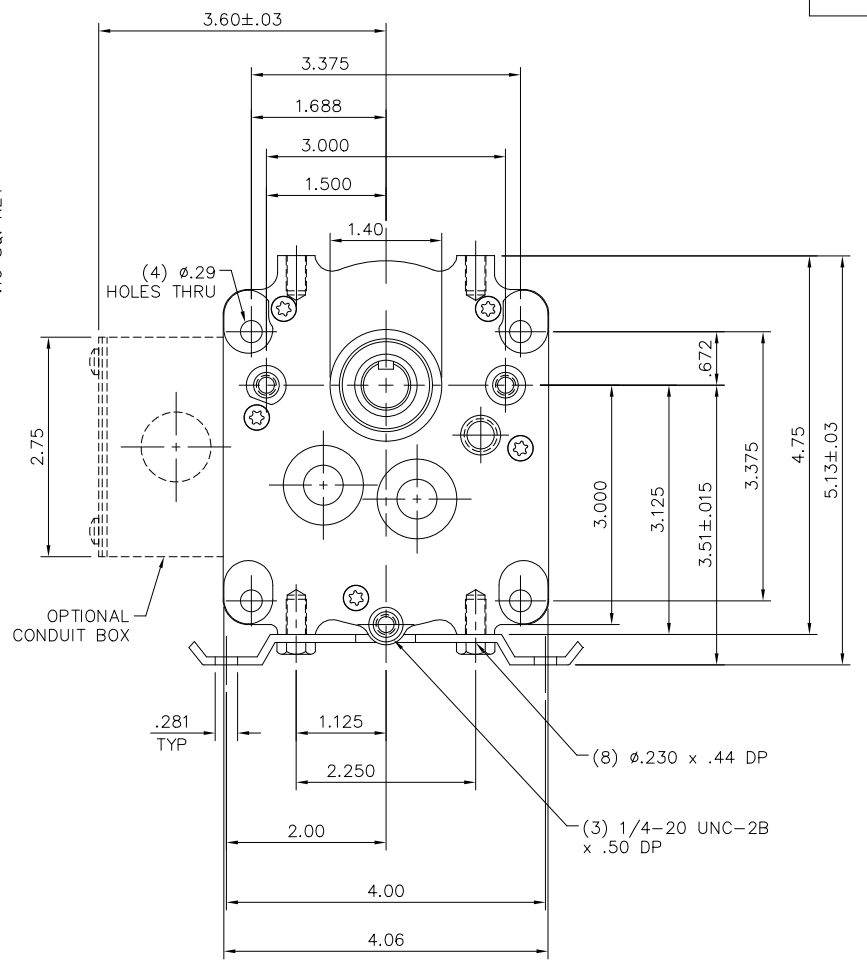
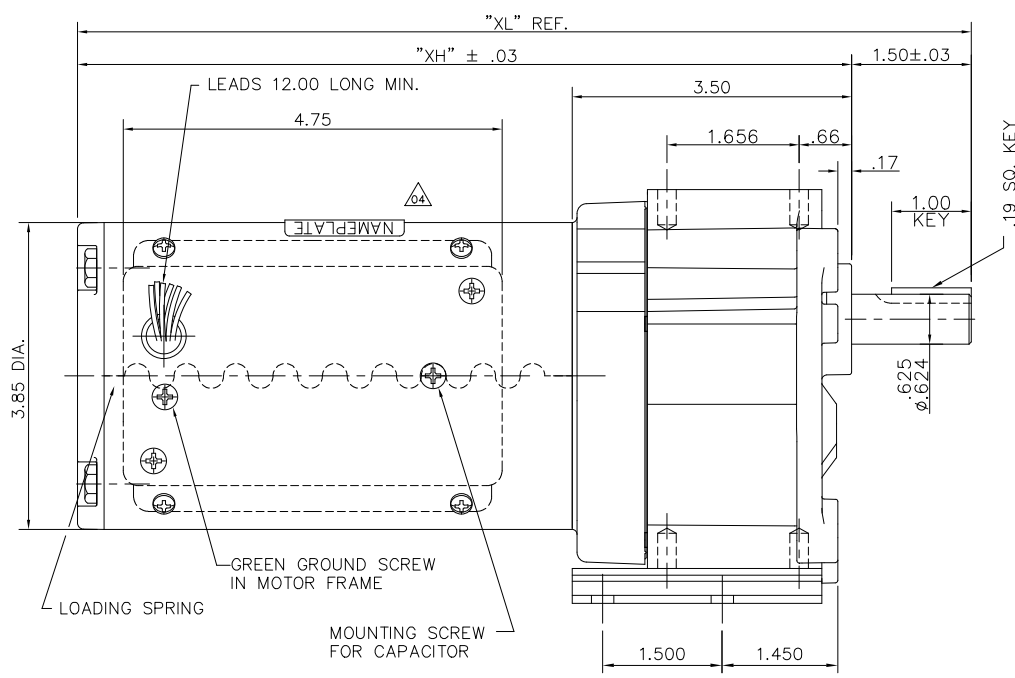
Nameplate Specifications

Phase	1	Output HP	0.06 Hp
Output KW	0.04 kW	Voltage	115 V
Speed	30 rpm	Service Factor	1
Frame	38	Enclosure	Totally Enclosed Non Ventilated
Thermal Protection	No Protection	Ambient Temperature	40 °C
Frequency	60/50 Hz	Current	1.0/0.50 A
Duty	Continuous	Insulation Class	F
KVA Code	D	Drive End Bearing Size	6201
Opp Drive End Bearing Size	6201	UL	Recognized
CSA	Y	CE	Y

Technical Specifications

Rotation	Reversible	Mounting	Special
Shaft Type	Parallel	Overall Length	10.46 in
Frame Length	5.13 in	Shaft Diameter	0.625 in
Shaft Extension	1.5 in	Torque	135 LB-IN
Outline Drawing	M1030380-M1145024	Connection Drawing	M1005040.02

This is an uncontrolled document once printed or downloaded and is subject to change without notice. Date Created:05/08/2023



CATALOG NUMBER	OUTPUT RPM	FULL LOAD TORQUE LB.-IN.	INPUT HP	OVERHUNG LOAD LBS.	GEARMOTOR TYPE & FRAME	RATIO TO 1	"XL"	"XH"
M1145023.00	15	208	1/15	407	P243-38	114	10.46	8.96
M1145024.00	30	135	1/15	330	P242-38	52	10.46	8.96
M1145025.00	45	92	1/15	292	P242-38	35	10.46	8.96
M1145026.00	70	61	1/15	256	P242-38	23	10.46	8.96
M1145027.00	97	43	1/15	232	P242-38	16.5	10.46	8.96
M1145028.00	139	30	1/15	208	P242-38	11.5	10.46	8.96
M1145029.00	8	345	1/15	491	P243-38	216	10.46	8.96

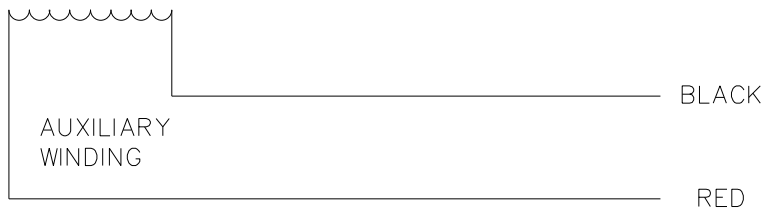
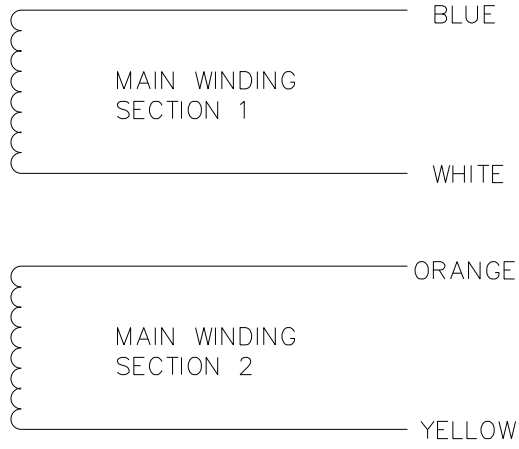
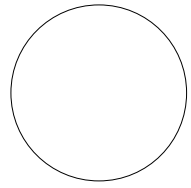
06	BOLT VIEW UPDATED	BMS 05/03/23	BMS						
05	EXTENDED 3 PT MOUNTING HOLES .14" TO MAKE FLUSH	RLW 6/25/02		TOLERANCES UNLESS SPECIFIED					
04	REV'D N.P APPEARANCE FOR ASSY	BJB 6/25/02	DWF	DEC.	INCHES				
	CLARITY PER ECR 65231			.X	±.1				
03	3.50 WAS 3.562, 5.13 WAS 5.19	SPV 06/29/95		.XX	±.03	TITLE			
02	ADDED CAPACITOR MOUNTING SCREW	SPV 06/29/95		.XXX	±.005				
01	REVISED TO NEW STOCK STANDARDS	TMZ 05/15/95		.XXXX	±.0005	MAT'L			
NO.	REVISION	BY & DATE	CHK	ANG	±1/2"	FINISH			
THIS DRAWING IN DESIGN AND DETAIL IS OUR PROPERTY AND MUST NOT BE USED EXCEPT IN CONNECTION WITH OUR WORK ALL RIGHTS OF DESIGN AND INVENTION ARE RESERVED THIS IS AN ELECTRONICALLY GENERATED DOCUMENT - DO NOT SCALE THIS PRINT			RFP	CAD FILE	M1030380	SIZE	DRAWING NO.	REV.	
			DIST			B	M1030380	07	



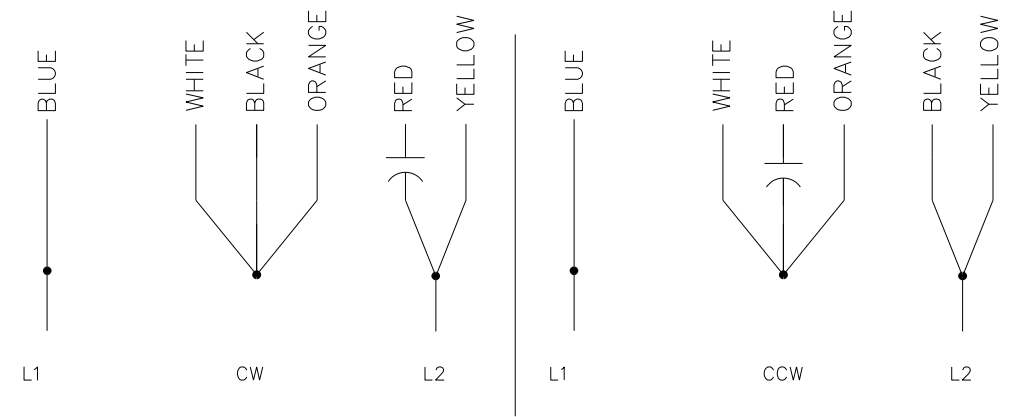
ELECTRIC MOTORS
GEARMOTORS
AND DRIVES

OUTLINE DRAWING
P240 GEARMOTOR - 38 FRAME A.C.

M1005040.02

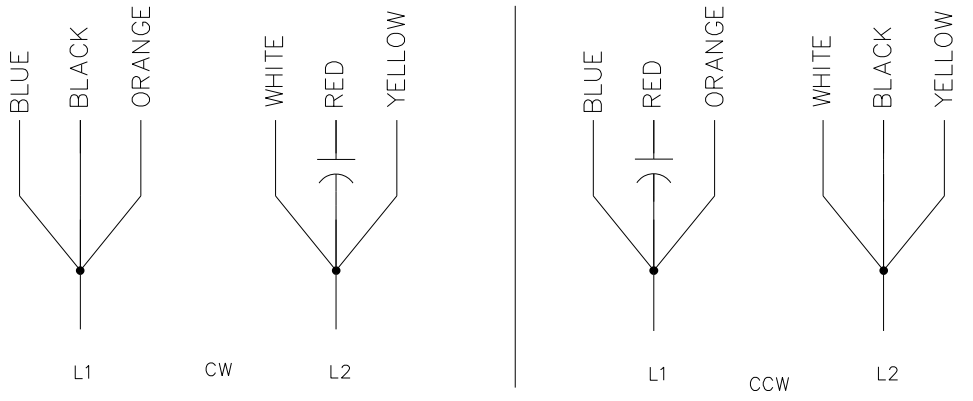


HIGH VOLTAGE CONNECTIONS



ROTATION VIEWING LEAD END OF MOTOR

LOW VOLTAGE CONNECTIONS



ROTATION VIEWING LEAD END OF MOTOR

ORACLE REV
003

				TOLERANCES UNLESS OTHERWISE SPECIFIED		LEESON ELECTRIC CORPORATION				
				DECIMALS						
				.00	± .01	DRAWN	DK	TITLE EXTERNAL WIRING DIAGRAM DUAL VOLTAGE DUAL ROTATION		
				.000	± .005	CH'K'D.	10/3/91			
				.0000	± .0005	APPR.	10/3/91	MAT'L.		
NO.	REVISION	BY	DATE	FRACTIONS	± 1/64	SCALE	NONE			
THIS DRAWING IN DESIGN AND DETAIL IS OUR PROPERTY AND MUST NOT BE USED EXCEPT IN CONNECTION WITH OUR WORK ALL RIGHTS OF DESIGN AND INVENTION ARE RESERVED				ANGLES	± 1/2°	REF.		FINISH	SIZE	DRAWING NO.
				INCH/MM		FMF	PR91376	LECO CORP.	A	M1005040.02