

# PRODUCT INFORMATION PACKET



Model No: M1115020.00  
Catalog No: M1115020.00  
Right Angle Gearmotor, 0.06 HP, 90 V, 125 RPM, 25 Frame, TENV



Regal and LEESON are trademarks of Regal Rexnord Corporation or one of its affiliated companies.  
©2025 Regal Rexnord Corporation, All Rights Reserved. MC017097E





**Nameplate Specifications**

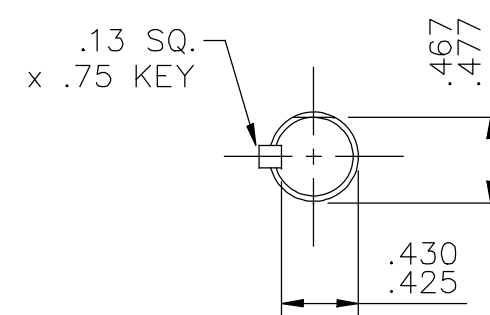
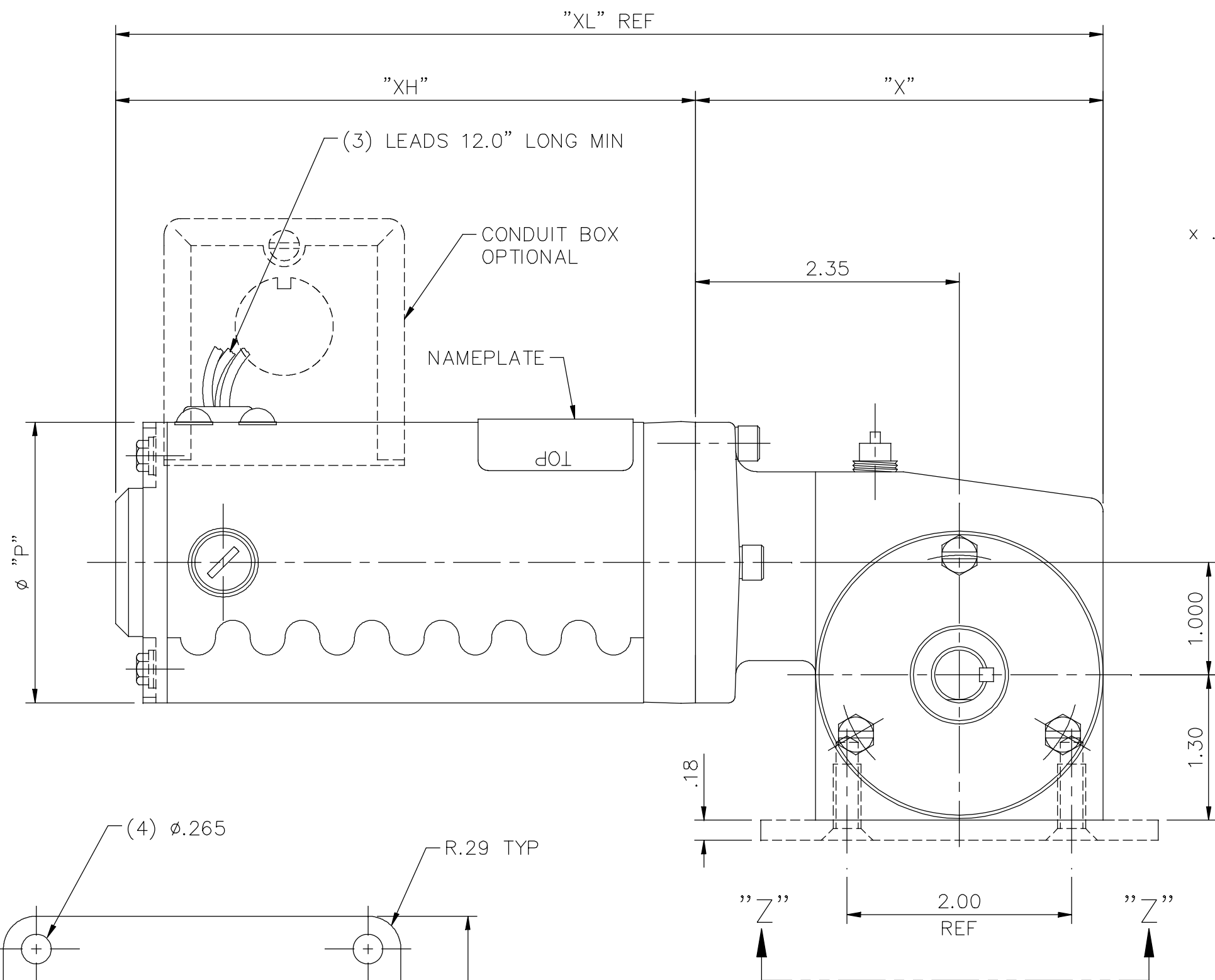
Output HP	0.06 Hp	Output KW	0.04 kW
Voltage	90 V	Speed	125 rpm
Service Factor	1.0	Frame	25
Enclosure	Totally Enclosed Non Ventiladed	Thermal Protection	No Protection
Efficiency	24.7 %	Ambient Temperature	40 °C
Current	0.85 A	Duty	Continuous
Insulation Class	H	Drive End Bearing Size	608
Opp Drive End Bearing Size	608	UL	Recognized
CSA	Y	CE	Y

**Technical Specifications**

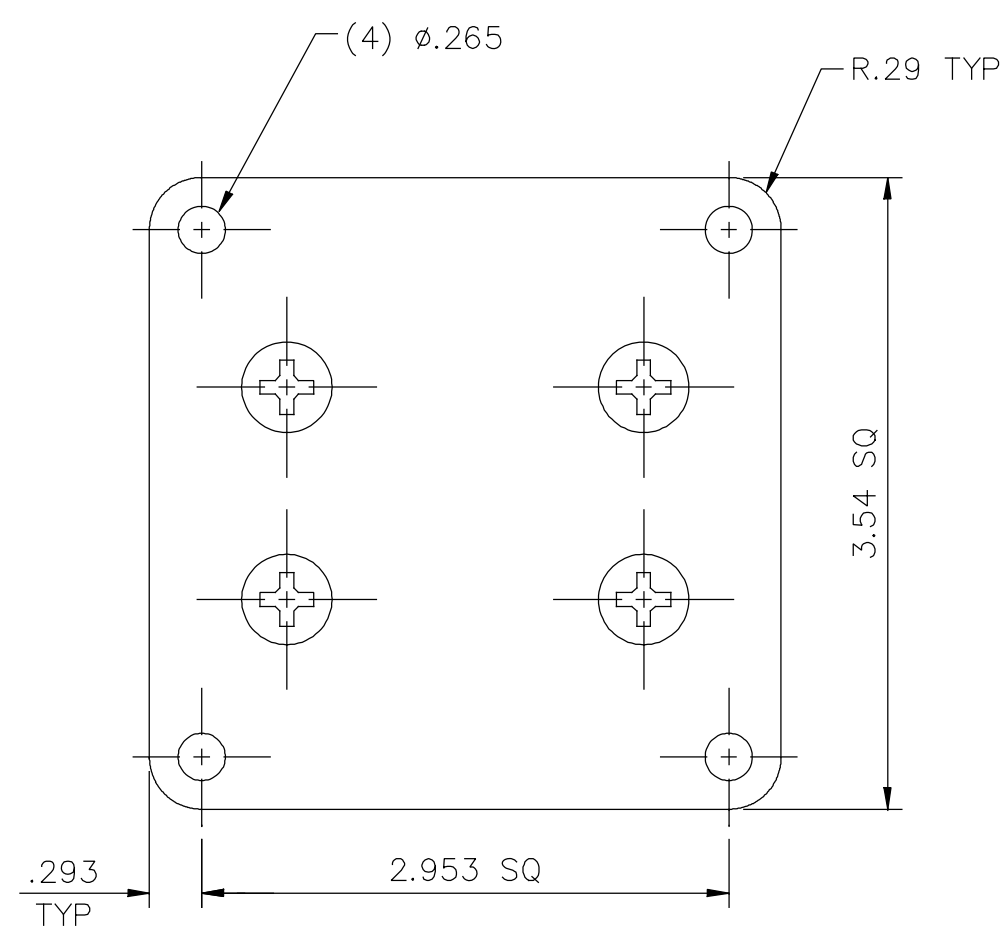
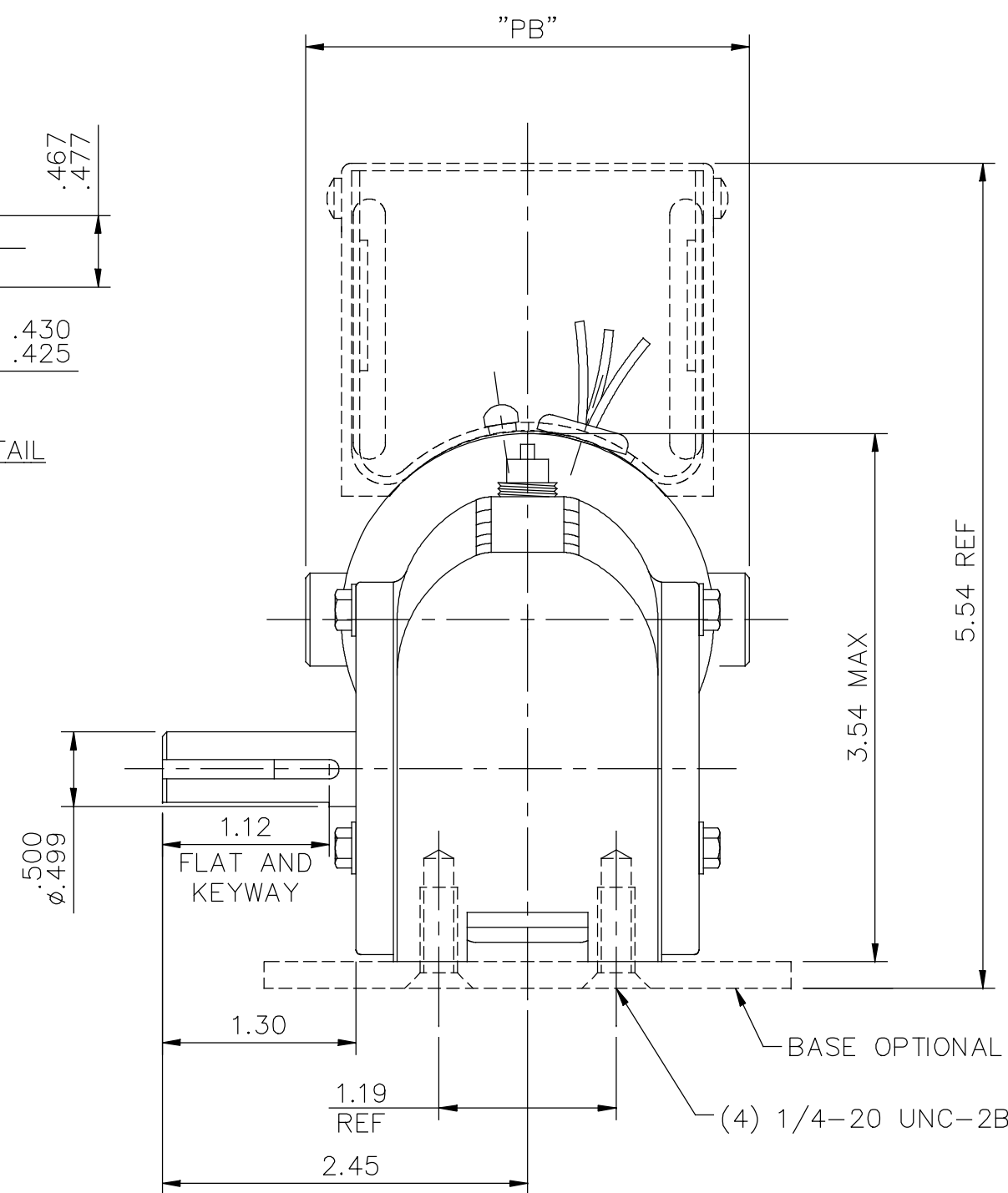
Rotation	Reversible	Mounting	Special
Shaft Type	Right Angle	Overall Length	8.80 in
Frame Length	4.25 in	Shaft Diameter	0.500 in
Shaft Extension	1.3 in	Torque	16 LB-IN
Connection Drawing	M100526001	Outline Drawing	M1030885-M1115020

This is an uncontrolled document once printed or downloaded and is subject to change without notice. Date Created:04/08/2025

M1030885



SHAFT DETAIL



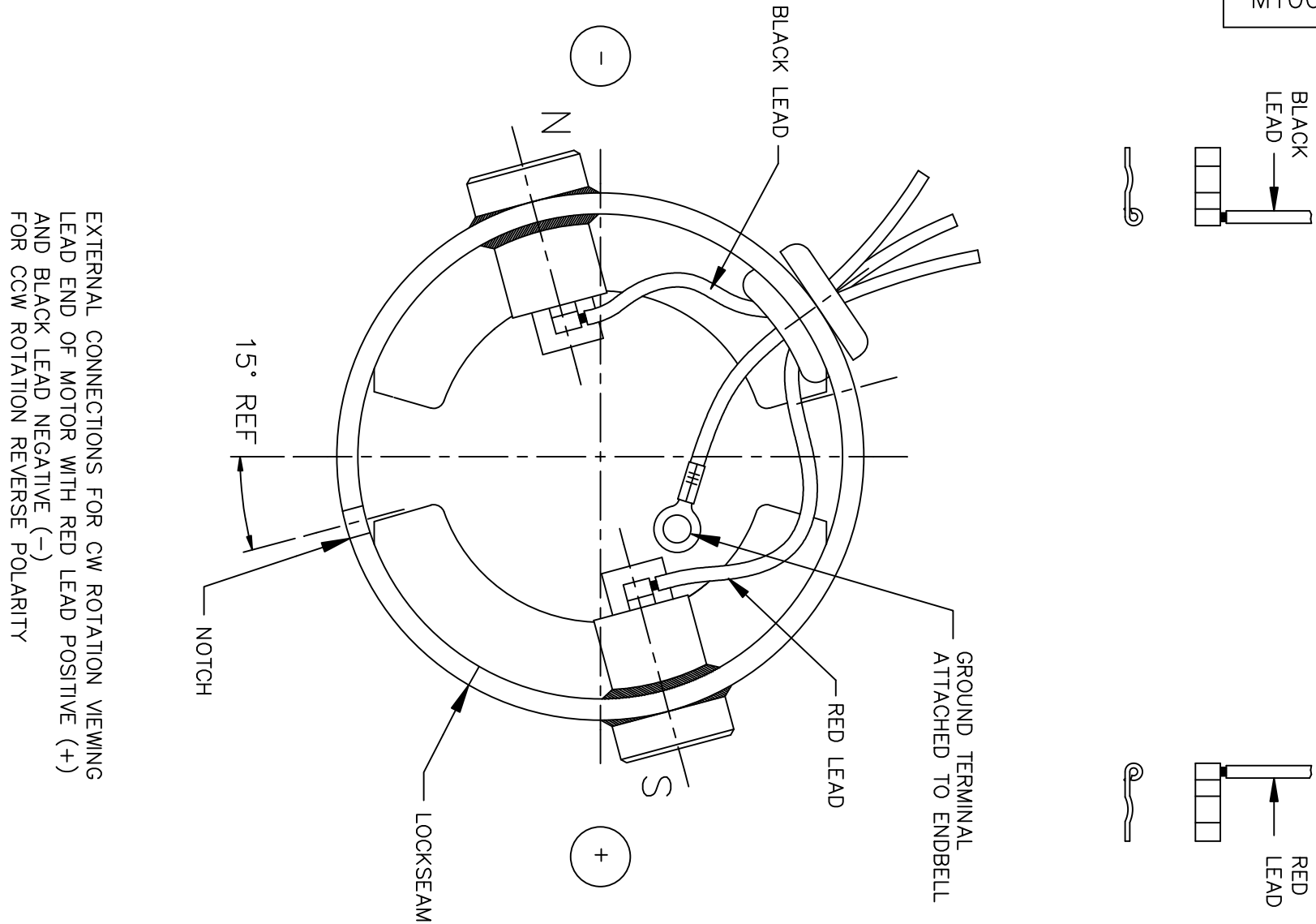
VIEW Z-Z  
(OPTIONAL BASE)

CATALOG NUMBER	SPEED RANGE RPM	FULL LOAD TORQUE LB.-IN.	INPUT HP	OVERHUNG LOAD LBS.	RATIO TO 1	"P"	"PB"	"X"	"XH"	"XL"
M1115018.00	42-.7	22	1/17	185	60	2.50	2.98	3.63	5.17	8.80
M1115019.00	62-1	19	1/17	185	40	2.50	2.98	3.63	5.17	8.80
M1115020.00	125-2.1	16	1/17	185	20	2.50	2.98	3.63	5.17	8.80
M1115021.00	250-4	10	1/17	185	10	2.50	2.98	3.63	5.17	8.80
M1115022.00	500-8	5.2	1/17	185	5	2.50	2.98	3.63	5.17	8.80


ORACLE  
REV  
003

NO.		REVISION	BY & DATE	CHK	ANG	TOLERANCES UNLESS SPECIFIED	LEESON		ELECTRIC MOTORS GEARMOTORS AND DRIVES		DRAWN	IPG 7/1/03	
						DEC.	INCHES				CHK	SAD 7/1/03	
F		ADDED 2.45" DIMENSION, ECO-0170148	IPG 7/8/19		.X	±.1	TITLE		OUTLINE		APPD	SCALE 3=4	
03		.03 TOL. ADDED TO LETTER COLUMNS, ECR 88023	VS 6/15/05	BC	.XX	±.03	25 FRAME DC - RIGHT ANGLE GEARBOX				REF	PR020634.01	
02		GEAR BOX WAS M1550166.XXX/ECO 05-1201 EFF.7/5/05	RPB 5/18/05	BC	.XXX	±.005	MAT'L.		10 SERIES - 90V		FMF	M1115019.00	
01		FIXED OUTPUT SHAFT VIEW, ECR 82288	IPG 3/22/04	SAD	.XXX	±.0005	FINISH				PREV		
THIS DRAWING IN DESIGN AND DETAIL IS OUR PROPERTY AND MUST NOT BE USED EXCEPT IN CONNECTION WITH OUR WORK ALL RIGHTS OF DESIGN AND INVENTION ARE RESERVED THIS IS AN ELECTRONICALLY GENERATED DOCUMENT - DO NOT SCALE THIS PRINT						RFP	CAD FILE	M1030885	SIZE	DRAWING NO.	B	M1030885	REV. F
						DIST							

D.C. MOTORS



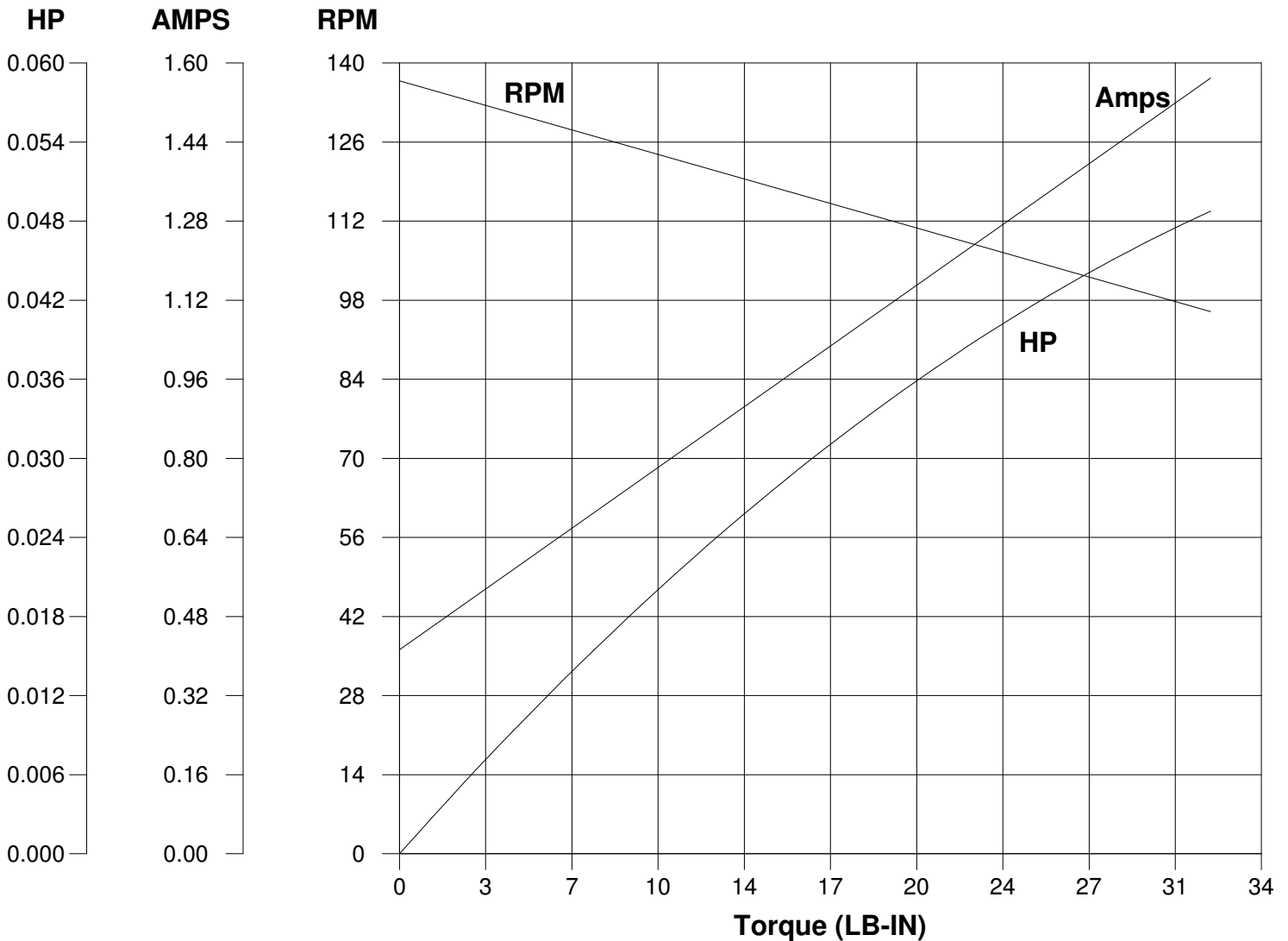
EXTERNAL CONNECTIONS FOR CW ROTATION VIEWING  
 LEAD END OF MOTOR WITH RED LEAD POSITIVE (+)  
 AND BLACK LEAD NEGATIVE (-)  
 FOR CCW ROTATION REVERSE POLARITY

05	SWITCH LEADS TO MATCH ROTATION, ISAAC 10-1990	IPG 5/17/2010	SK	TOLERANCES UNLESS SPECIFIED		 ELECTRIC MOTORS GEARMOTORS AND DRIVES	DRAWN IPG 6/4/03	
04	SWITCH "N" AND "S" TO MATCH FRAME/MAGNET ASSY	IPG 4/26/2010	SK	DEC.	INCHES		CHK SAD 6/4/03	
	DRAWING, ISAAC 10-1709			.X	±.1		APPD	
03	ADDED "TRU-TORQ" TO THE TITLE BLOCK AND ORACLE	IPG 3/2/2004	SAD	.XX	±.03	TITLE CONNECTION DIAGRAM	SCALE 1=1	
	DESCRIPTION, ECR 83990			.XXX	±.005		REF PR020634.01	
02	SWITCHED N & S PER ECR 83629	BPW 12/19/03	SAD	.XXXX	±.0005	MAT'L.	FMF M1115050.00	
NO.	REVISION	BY & DATE	CHK	ANG	±1/2'	FINISH	PREV	
THIS DRAWING IN DESIGN AND DETAIL IS OUR PROPERTY AND MUST NOT BE USED EXCEPT IN CONNECTION WITH OUR WORK ALL RIGHTS OF DESIGN AND INVENTION ARE RESERVED THIS IS AN ELECTRONICALLY GENERATED DOCUMENT - DO NOT SCALE THIS PRINT			RFP	CAD FILE M100526001		SIZE A	DRAWING NO. M1005260.01	REV. 05
			DIST					

# LEESON ELECTRIC CORPORATION

## TYPICAL PERFORMANCE CURVE FOR DIRECT CURRENT PERMANENT MAGNET MOTOR

<b>Model No.</b> <u>985.506</u>	<b>Catalog No.</b> <u>M1115020.00</u>	
<b>HP</b> <u>0.059</u>	<b>RPM</b> <u>125</u>	<b>DC Volts</b> <u>90.0</u>
<b>F.F.</b> <u>1.38</u>	<b>Encl</b> <u>TENV</u>	<b>N.P. FLA</b> <u>0.85</u>
<b>Max. Amb.</b> <u>40.0 Deg C</u>	<b>Insul.</b> <u>H</u>	<b>Type</b> <u>DN</u>
		<b>Frame</b> <u>25</u>
		<b>S.F.</b> <u>1.00</u>
		<b>Duty</b> <u>Cont</u>



**Ra** 14.000 Ohms  
**La** 31.69 mHenrys  
**Ja** 0.0759 LB-IN<sup>2</sup>  
**Ke** 29.72 V/KRPM

**Kt** 2.512 LB-IN/AMP  
**Imax** 11.2 AMPS Allowed  
**FL Torque** 16.00 LB-IN  
**FL EFF** 24.70 %

**Winding W-** MD2526-1      **Prepared by** V. Boehlen      **Date** 11-09-2005