

PRODUCT INFORMATION PACKET



Model No: SF4B150TSC64Y

Catalog No: LM32845

..150HP..1800RPM.445TSC.TEFC.230/460V.3PH.60HZ.CONT.40C..RIGID-C.....

Totally Enclosed Fan Cooled (TEFC)



Regal and Leeson are trademarks of Regal Beloit Corporation or one of its affiliated companies.

©2018 Regal Beloit Corporation, All Rights Reserved. MC017097E



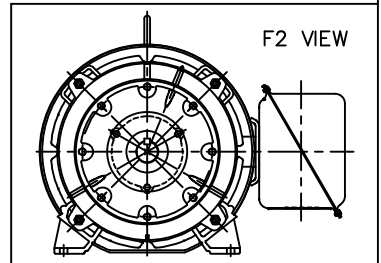
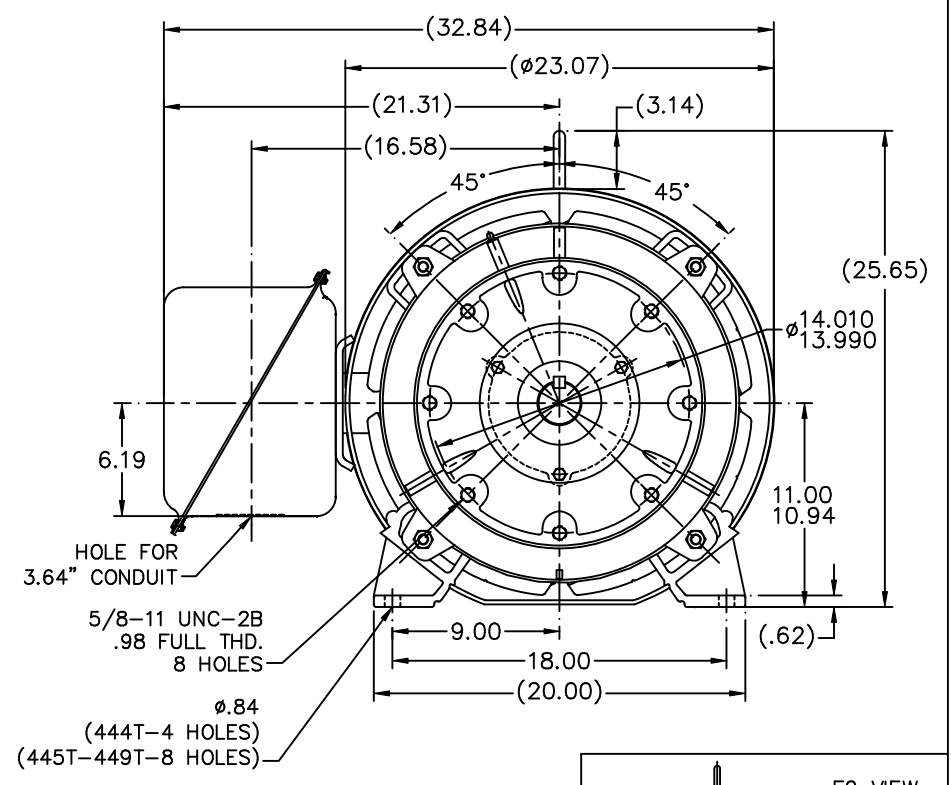
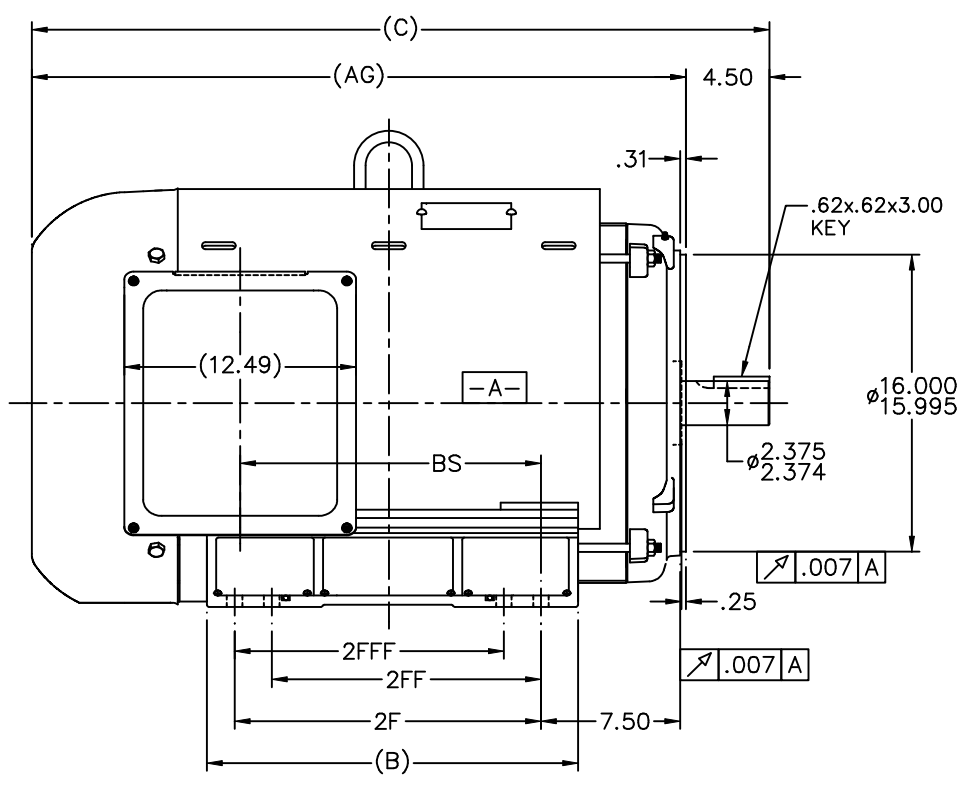


Nameplate Specifications

Output HP	150 Hp	Output KW	112.0 kW
Frequency	60 Hz	Voltage	460 V
Current	168.0 A	Speed	1785 rpm
Service Factor	1.15	Phase	3
Efficiency	96.2 %	Duty	Continuous
Insulation Class	F	Design Code	B
KVA Code	G	Frame	445TSC
Enclosure	Totally Enclosed Fan Cooled	Overload Protector	No
Ambient Temperature	40 °C	Drive End Bearing Size	318
Opp Drive End Bearing Size	315	UL	Recognized
CSA	Y	CE	Y
IP Code	43		

Technical Specifications

Electrical Type	Squirrel Cage Induction Run	Starting Method	Wye Start Delta Run
Poles	4	Rotation	Reversible
Mounting	Rigid base	Motor Orientation	HORIZONTAL
Drive End Bearing	BALL	Opp Drive End Bearing	BALL
Frame Material	Rolled Steel	Shaft Type	TS
Overall Length	39.74 in	Frame Length	23.17 in
Shaft Diameter	2.375 in	Shaft Extension	4.75 in
Assembly/Box Mounting	F1/F2 CAPABLE		
Outline Drawing	XK2F1SC2-2317	Connection Diagram	A-EE7340-LN



NOTES:
 1. CONDUIT BOX CAN BE ROTATED IN 90° STEPS
 2. NAMEPLATE TO BE READ FROM CONDUIT BOX SIDE OF MOTOR.

DASH	FRAME	C	AG	B	2F	2FF	2FFF	BS
2117	444TS	37.74	33.24	18.00	14.50			14.20
2317	445TS	39.74	35.24	20.00	16.50	14.50	14.50	16.20
2667	447TS	43.24	38.74	23.50	20.00	16.50	16.50	19.70
3167	449TS	48.24	43.74	28.50	25.00	20.00	20.00	23.95

				TOLERANCES UNLESS SPECIFIED		Lincoln MOTOR		DRAWN TJB 10-26-2001				
				DEC.	INCHES			CHK	ML	10-26-2001		
				.X	±.1			APPD	HNH	10-26-2004		
2	CORRECTED 'AG' DIM. PER CN 29200-3767	CTO 09-16-2004	HNH	.XXX	±.005	TITLE OUTLINE NEMA MOTORS		SCALE 3-20				
1	NEW DRAWING MU39294	TJB 10-26-2004	HNH	.XXX	±.005	440TS FR. - TEFC UE - C-FACE		REF				
NO.	REVISION	BY & DATE	CHK	ANG	FINISH			PREV				
			RFP	±7'30"		CAD FILE xk2f1sc2		SIZE	DRAWING NO.	PAGE	OF	REV.
			DIST	BY				B	XK2F1SC2			2

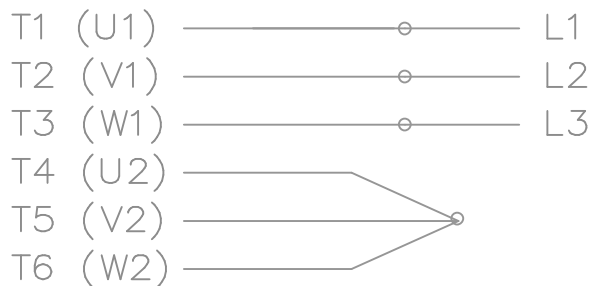
```
ERROR: syntaxerror  
OFFENDING COMMAND: --nostringval--
```

```
STACK:
```

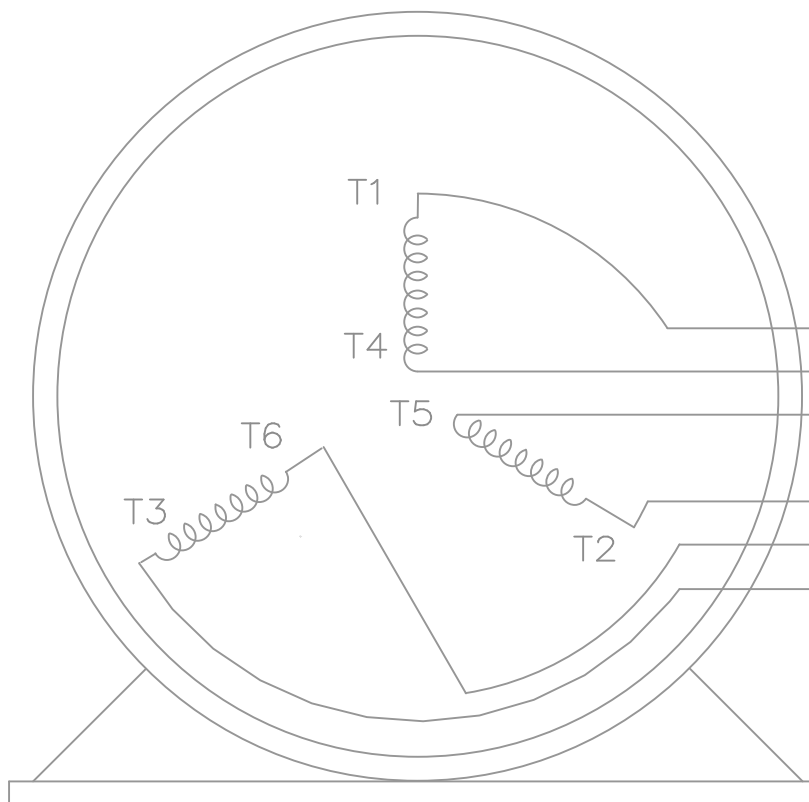
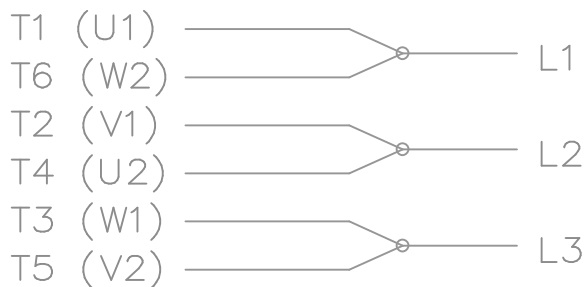
```
/RS  
-dictionary-  
/Pscript_WinNT_Compact  
-dictionary-
```

THREE PHASE – Y START
Δ RUN MOTOR

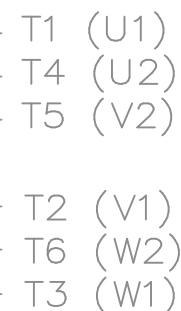
START



RUN




VIEW OF TERMINAL END



T6CK
T6BM
T4CC
T2DL
T4C

NOTE:
IEC LEAD MARKINGS ARE NOTED
IN PARENTHESES

				TOLERANCES UNLESS SPECIFIED			DRAWN BLR 10-04-1999		
				DEC.	INCHES		CHK DRS 10-04-1999		
				.X	±.1		APPD TB 10-04-1999		
3	REVISED TO MATCH M.E. ORIGINAL	TAT 07-25-2005	ML	.XX	±.02	TITLE CONNECTION DIAGRAM 3Ø – WYE START DELTA RUN	SCALE 1=1		
2	REVISED DRAWING MISTAKE CN 29200-2980	ERH 05-15-2003	ML	.XXX	±.005		REF		
1	NEW DRAWING	BLR 10-09-1999		.XXXX	±.0005		FMF		
NO.	REVISION	BY & DATE	CHK	ANG	±'30"	FINISH	PREV		
THIS DRAWING IN DESIGN AND DETAIL IS OUR PROPERTY AND MUST NOT BE USED EXCEPT IN CONNECTION WITH OUR WORK ALL RIGHTS OF DESIGN AND INVENTION ARE RESERVED THIS IS AN ELECTRONICALLY GENERATED DOCUMENT – DO NOT SCALE THIS PRINT				RFP	CAD FILE ee7340_In		SIZE	DRAWING NO. PAGE OF	REV.
				DIST	WA-LB-SB		A	EE7340-LN	3

