

PRODUCT INFORMATION PACKET



Model No: SSD2B10TC61
Catalog No: LM32778
..10HP..3600.213TC.ODP.230/460V.3PH.60HZ.CONT.40C..RIGID-C.....
Open Drip Proof (ODP)

Regal and Leeson are trademarks of Regal Beloit Corporation or one of its affiliated companies.
©2018 Regal Beloit Corporation, All Rights Reserved. MC017097E





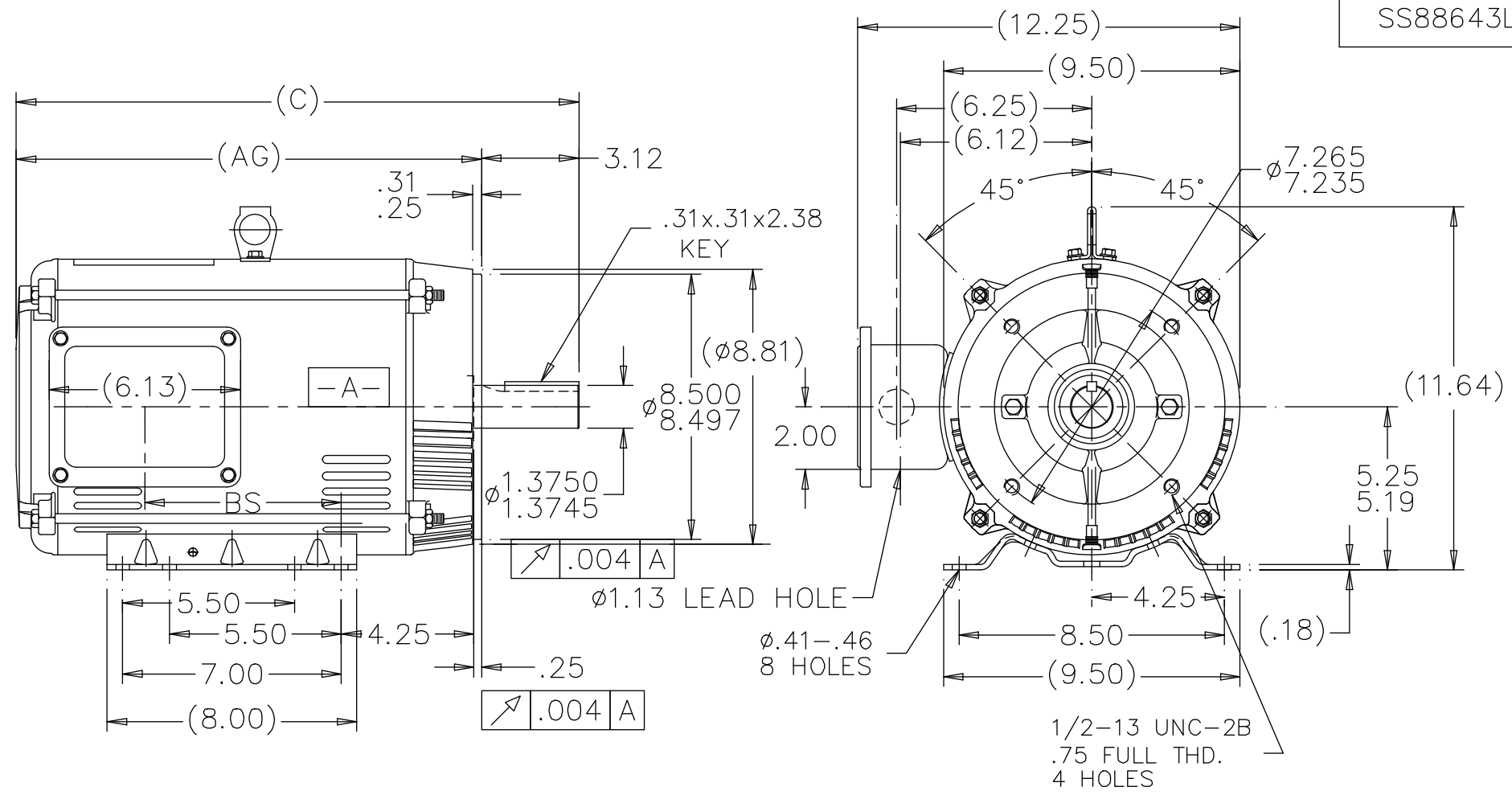
Nameplate Specifications

Output HP	10 Hp	Output KW	7.5 kW
Frequency	60 Hz	Voltage	230/460 V
Current	23.4/11.7 A	Speed	3515 rpm
Service Factor	1.15	Phase	3
Efficiency	89.5 %	Duty	Continuous
Insulation Class	F	Design Code	B
KVA Code	H	Frame	213TC
Enclosure	Drip Proof	Overload Protector	No
Ambient Temperature	40 °C	Drive End Bearing Size	6309
Opp Drive End Bearing Size	6206	UL	Recognized
CSA	Y	CE	Y
IP Code	22		

Technical Specifications

Electrical Type	Squirrel Cage Induction Run	Starting Method	Across The Line
Poles	2	Rotation	Reversible
Mounting	Rigid base	Motor Orientation	HORIZONTAL
Drive End Bearing	BALL	Opp Drive End Bearing	BALL
Frame Material	Rolled Steel	Shaft Type	T
Overall Length	18.03 in	Frame Length	11.15 in
Shaft Diameter	1.375 in	Shaft Extension	3.12 in
Assembly/Box Mounting	F1/F2 CAPABLE		
Outline Drawing	A-SS88643LN-1115	Connection Diagram	005010.20LN


SS88643LN



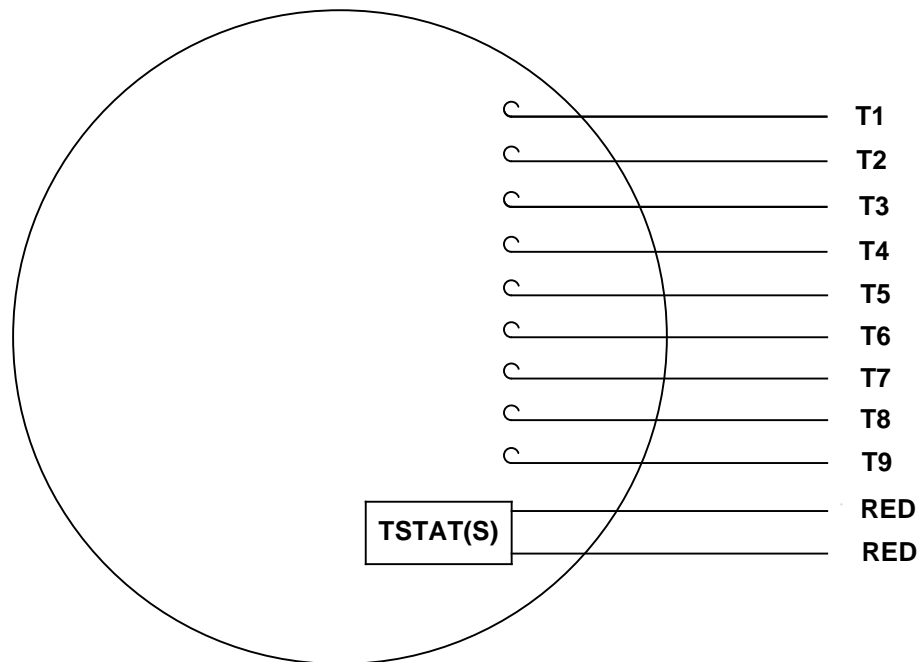
NOTES:

1. NAMEPLATE TO BE READ FROM CONDUIT BOX SIDE OF MOTOR.
2. CONDUIT BOX CAN BE MOUNTED ON OPPOSITE SIDE BY REMOVING BRACKETS AND TURNING FRAME 180. (EXCEPT AS NOTED)
3. DASH 965 TO BE READ FROM OPPOSITE SHAFT END

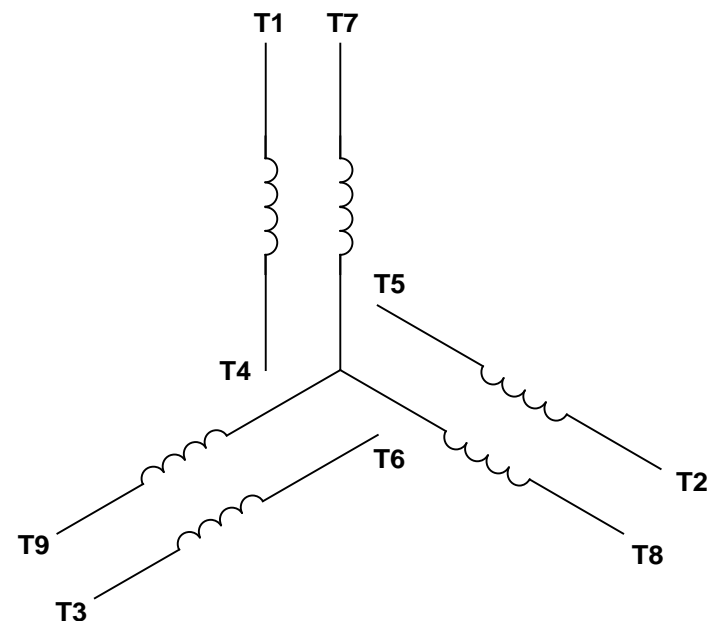
DASH	FRAME	C	AG	BS	MOUNTING
1115	213/15TC	18.03	14.91	6.30	F1 / F2
1240	213/15TC	19.28	16.16	7.55	F1 ONLY

NO.		REVISION		BY & DATE		TOLERANCES UNLESS SPECIFIED		 TITLE 210TC FR. - BB - TS - DR.PR.	DRAWN UD 01/31/13			
						DEC.	INCHES		CHK SM 01/31/13			
						.X	±.1		APPD			
						.XX	±.03		SCALE 1=5			
						.XXX	±.005		REF SS88643LE			
						.XXXX	±.0005	MAT'L.	FMF MU108472			
						ANG	±1/2'	FINISH	PREV			
THIS DRAWING IN DESIGN AND DETAIL IS OUR PROPERTY AND MUST NOT BE USED EXCEPT IN CONNECTION WITH OUR WORK ALL RIGHTS OF DESIGN AND INVENTION ARE RESERVED THIS IS AN ELECTRONICALLY GENERATED DOCUMENT - DO NOT SCALE THIS PRINT						RFP		CAD FILE	SS88643LN	SIZE	DRAWING NO. PAGE 1 OF 1	REV.
						DIST	LB			A	SS88643LN	

VIEW FROM OUTSIDE OF MOTOR AT SWITCH END.




LINE LEADS



VOLTAGE	L1	L2	L3	JOIN & INSULATE
HIGH	T1	T2	T3	(T4, T7) (T5, T8) (T6, T9)
LOW	T1, T7	T2, T8	T3, T9	T4, T5, T6

RBC PROPRIETARY AND CONFIDENTIAL INFORMATION
 This document is the property of REGAL BELOIT CORPORATION ("RBC") including its subsidiaries and divisions and contains proprietary information of RBC. This document is loaned on the express condition that neither it nor the information contained therein shall be disclosed to others without the express written consent of RBC, and that the information shall be used by the recipient only as approved expressly by RBC. This document shall be returned to RBC upon its request. This document may be subject to certain restrictions under U.S. export control laws and regulations.

				TOLERANCES UNLESS SPECIFIED				DRAWN KK 3/17/2011	
				DEC	INCHES			CHK ST 3/17/2011	
				.X	±.1			APPR	
				.XX	±.01			SCALE 1:1	
				.XXX	±.005			REF 005010-20	
				.XXXX	±.0005	MAT'L DECAL - 004014 (TSTAT) - 080582		FMF	
NO	REVISION	BY & DATE	CHK	ANG	±1/2°	FINISH STOCK		PAGE	OF
THIRD ANGLE PROJECTION			RFP		PREV	SIZE	DRAWING NO		REV
					NETWORK FILE NAME 00501020LN		A	005010-20LN	

