

PRODUCT INFORMATION PACKET



Model No: LM30092
Catalog No: LM30092
10 HP Elevator Duty Motor, 3 phase, 3600 RPM, 230/460 V, 213T Frame, ODP
Elevator Duty Motors



Regal and Leeson are trademarks of Regal Beloit Corporation or one of its affiliated companies.
©2020 Regal Beloit Corporation, All Rights Reserved. MC017097E

The Regal logo is positioned in the bottom right area of the page. It features the word "REGAL" in a white, bold, sans-serif font, set against a dark grey, trapezoidal background. The background of the entire page on the right side is a blue gradient with a fine, repeating pattern.



Nameplate Specifications

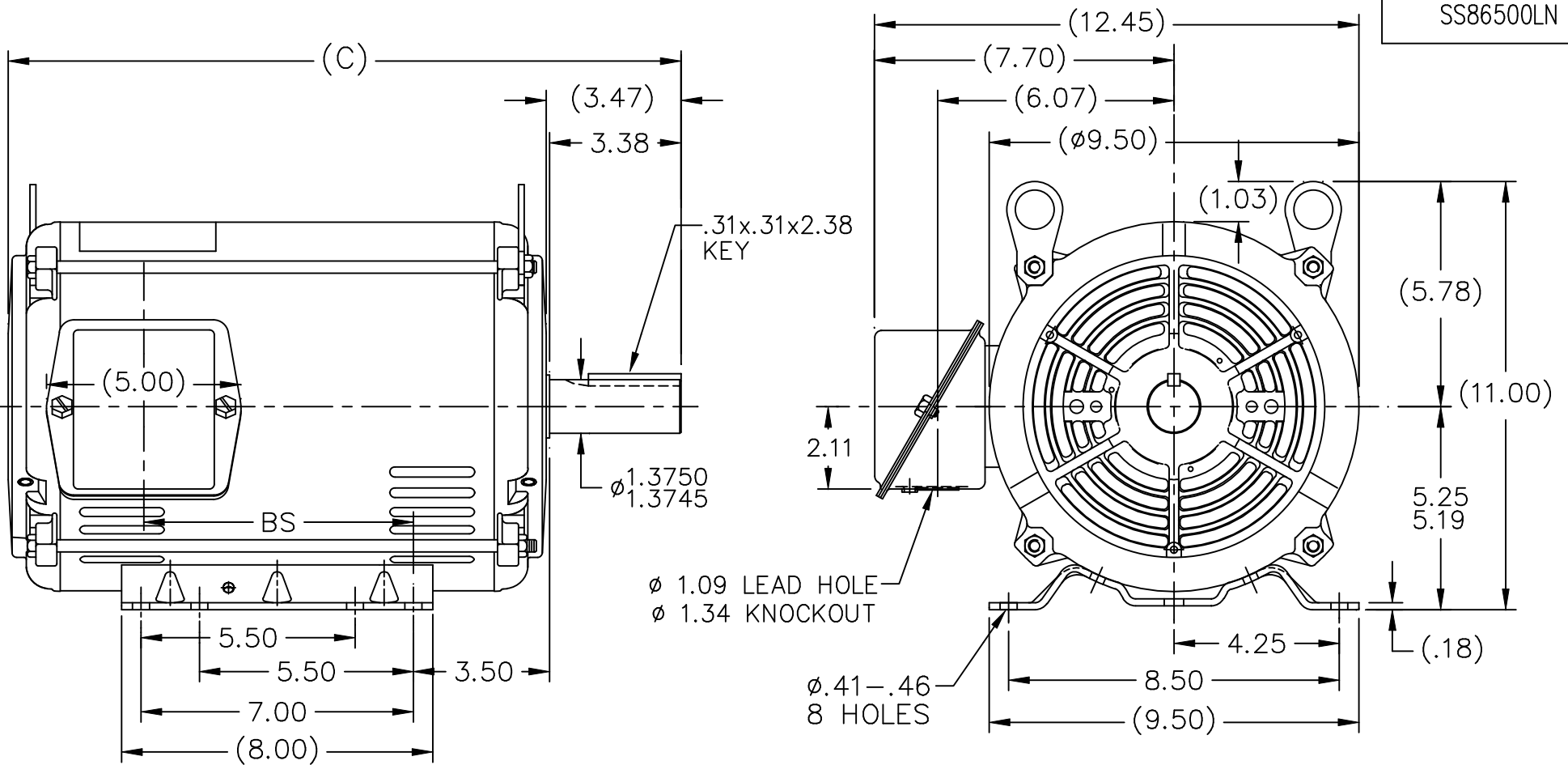
Output HP	15 Hp	Output KW	7.46 kW
Frequency	60 Hz	Voltage	230/460 V
Current	23.4/11.7 A	Speed	3470 rpm
Service Factor	1	Phase	3
Efficiency	88.5 %	Power Factor	90
Duty	120/80 STARTS/HOUR	Insulation Class	F3
Design Code	INV	KVA Code	H
Frame	213T	Enclosure	DP
Thermal Protection	NOT	Ambient Temperature	40 °C
Drive End Bearing Size	307	Opp Drive End Bearing Size	206
UL	V-INS, CONST UL REC	CSA	Y
CE	Y	IP Code	22

Technical Specifications

Electrical Type	Squirrel Cage Induction Run	Starting Method	WYE START DELTA RUN
Poles	2	Rotation	REV
Resistance Main	1.1 Ohms	Mounting	RIGID
Motor Orientation	HORIZONTAL	Drive End Bearing	BALL
Opp Drive End Bearing	BALL	Frame Material	ROLLED STEEL
Shaft Type	T	Overall Length	17.29 in
Frame Length	11.23 in	Shaft Diameter	1 3/8 in
Shaft Extension	3.38 in	Assembly/Box Mounting	F1/F2 CAPABLE
Outline Drawing	SS86500LN-1115	Connection Drawing	EE7358-LN

This is an uncontrolled document once printed or downloaded and is subject to change without notice. Date Created:20/05/2020


SS86500LN



NOTES:

1. NAMEPLATE TO BE READ FROM C'BOX SIDE OF MOTOR.
2. BOX CAN BE MOUNTED IN 90° STEPS.
3. BOX WILL BE AT OPPOSITE SIDES IN F2 MOUNTING.
4. BOX CAN BE MOUNTED ON OPPOSITE SIDE BY REMOVING BRACKETS AND TURNING FRAME 180°. (EXCEPT AS NOTED.)

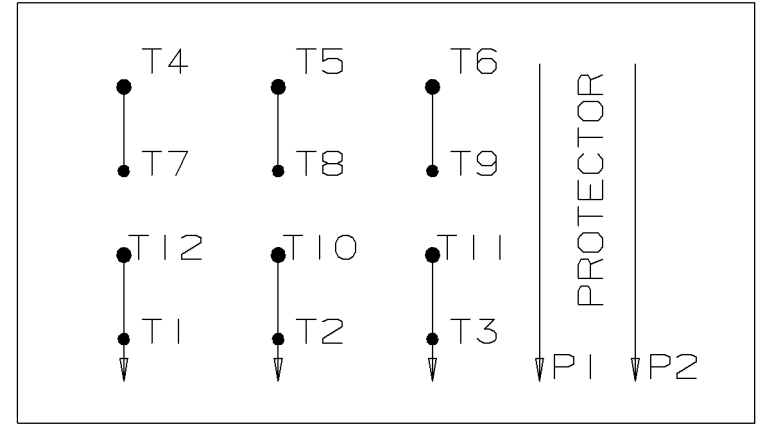
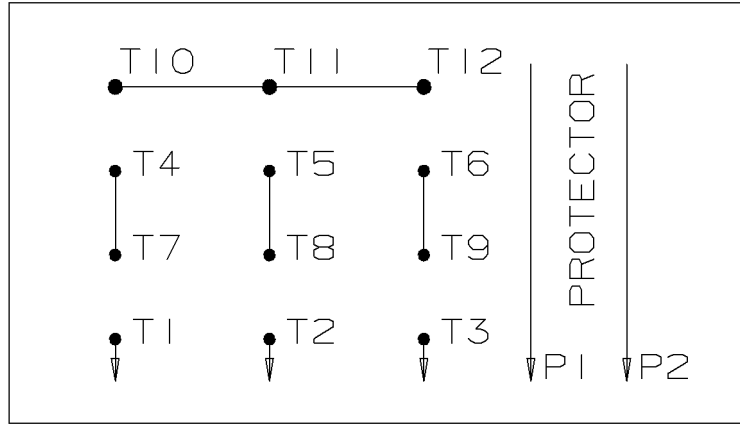
DASH	FR.	C	BS	MOUNTING
965	213T	15.79	5.43	
1115	213/15T	17.29	6.93	
1240	213/15T	18.54	8.18	F1 ONLY

				TOLERANCES UNLESS SPECIFIED			DRAWN TRB 07-14-1999		
NO.	REVISION	BY & DATE	CHK	ANG	FINISH		SCALE	1=4	
5	REISSUE - REVISED BORDER TO LINCOLN LOGO	MSG 11-04-2004	ML	DEC.	INCHES	TITLE OUTLINE 210T FRAME -BB -TS -DR.PR. MAT'L. FINISH	CHK	ML 07-20-1999	
4	REMOVED DASH 965 FROM SERIES CN38252	RWR 07-20-2004	ML	.X	±.1		APPD	GK 07-20-1999	
3	UPDATED 'C' DIMS PER ACTUAL PARTS CN29200-320	CAV 04-11-2000	ML	.XX	±.03		SCALE	1=4	
2	UPDATED 'C'BOX GEOMETRY CN28425	DRS 01-25-2000	ML	.XXX	±.005		REF		
1	NEW DRAWING	TRB 07-20-1999	ML	.XXXX	±.0005		FMF		
THIS DRAWING IN DESIGN AND DETAIL IS OUR PROPERTY AND MUST NOT BE USED EXCEPT IN CONNECTION WITH OUR WORK ALL RIGHTS OF DESIGN AND INVENTION ARE RESERVED THIS IS AN ELECTRONICALLY GENERATED DOCUMENT - DO NOT SCALE THIS PRINT		RFP	CAD FILE		ss86500ln	SIZE	DRAWING NO.	PAGE 1 OF 1	REV.
		DIST	LB			A	SS86500LN		5

WYE START

HIGH VOLTAGE

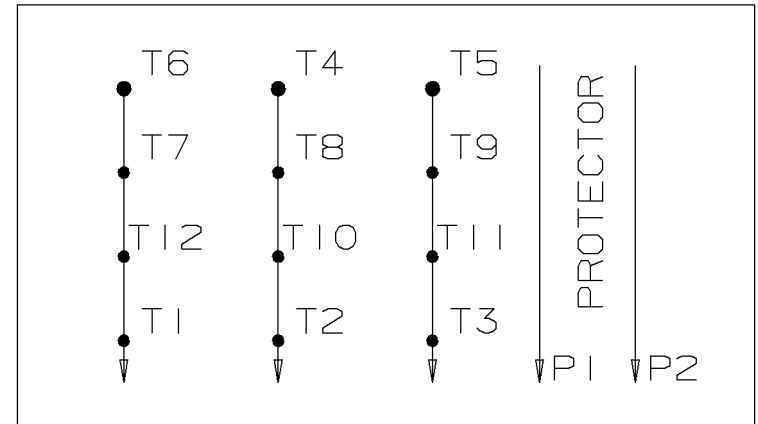
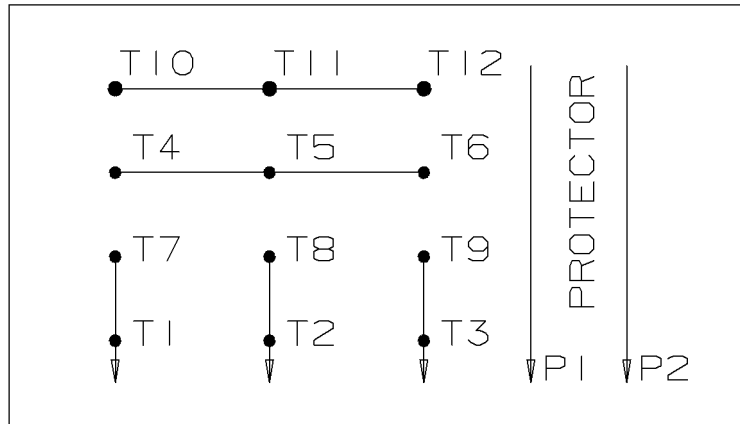
DELTA RUN




WYE START

LOW VOLTAGE

DELTA RUN



4/2 CKTY Δ

					✓ UNLESS OTHERWISE SPECIFIED DIMENSIONS ARE IN INCHES TOL. ON XX±.02 XXX±.005 XXXX±.0005 ANGLES± 7'30"	MAX. SURFACE ROUGHNESS UNLESS OTHERWISE NOTED	DRAWN BY NJS 02-15-2001 CHKD BY ML 02-16-2001
1	02-16-2001	NEW DRAWING	NJS	PART NAME CONNECTION DIAGRAM			DRWG NO A- EE7358C-LN
REV	DATE	CHANGE	NAME				

PURCHASED	CADD FILE NO.	EE7358C-LN
-----------	---------------	------------



1051 CHEYENNE AVE.
 GRAFTON, WI 53024
 PH. 262-277-8810

DATA VOLTS: 460

CERTIFICATION DATA SHEET

CONN. DIAGRAM: A-EE7358-LN
 OUTLINE: A-SS86500LN-1115
 WINDING: K213282

CAT #: LMS0092

R6 7

TYPICAL MOTOR PERFORMANCE DATA

HP	KW	SYNC RPM	FL RPM	FRAME	ENCLOSURE	TYPE	KVA CODE	DESIGN	
10	7.5	3600	3515	213T	DP	TDW	H	B	
PH	HZ	VOLTS	AMPS	START TYPE	DUTY	INSL	S.F.	AMB	ELEV.
3	60/60	230/460#230/460	23.4/11.7#35.5/17.8	WYE START DELTA RUN	60 MIN	F	1.15	40	3300

F.L. EFF	F.L. PF	3/4 LD EFF	3/4 LD PF	88.5	87.5	1/2 LD EFF	88.5	GTD EFF	86.5	ELECT. TYPE
88.5	90.0									SQ CAGE IND RUN

F.L. TORQUE	LR AMPS @ 460 V	L.R. TORQUE	MAX. LOAD WK ²	B.D. TORQUE	F.L. RISE (° C)
15.0 LB-FT	81.0	25.0 LB-FT	167%	46.5 LB-FT	310%
					25

PRESSURE @ 3	SOUND	POWER	ROTOR WK ²	SAFE STALL TIME	STARTS/HOUR	MOTOR WGT
75 DBA	84 DBA		0.45 LB-FT ²	15 SEC.	0	105 LB.

*** SUPPLEMENTAL INFORMATION ***

DE BRACKET TYPE	ODE BRACKET TYPE	MOUNT TYPE	MOTOR ORIENTATION	SEVERE DUTY	HAZARDOUS LOCATION	DRIP COVER	SCREENS	PAINT
STANDARD	STANDARD	RIGID	HORIZONTAL	NO	NONE	NO	NONE	WATTS/SAVER
BEARINGS	GREASE	SHAFT TYPE	SPECIAL DE	SPECIAL ODE	SHAFT MATERIAL	FRAME MATERIAL		
DE ODE								
BALL BALL	POLYREX EM	T	NONE	NONE	1144 STRESSPROOF (C-223)	ROLLED STEEL		
307	206							

THERMOSTATS	PROTECTORS	WDG RTD's	BRG RTD's	THERMISTORS	CONTROL	SPACE HEATERS
NONE	NOT	NONE	NONE	NONE	FALSE	NA

R1 (ohms/ph)	R2 (ohms/ph)	X1 (ohms/ph)	X2 (ohms/ph)	Xm (ohms/ph)	VIBRATION (in/sec)	FLOAT ODE
0.568	0.568	1.988	1.136	60.776	0.150	

* N O T E S *		INVERTER TORQUE: NONE	
		INV. HP SPEED RANGE: NONE	
		ENCODER: NONE	
		BRAKE: NONE	
		FT-LB: N/A	
		VOLTAGE: NONE	
		NONE PPR	

DATE: 8/21/2018	UL: V-INS, CONST UL REC
-----------------	-------------------------

Data Sheet

Date: 8/21/2018

LM30092



Data @ 460 V

Motor Load Data

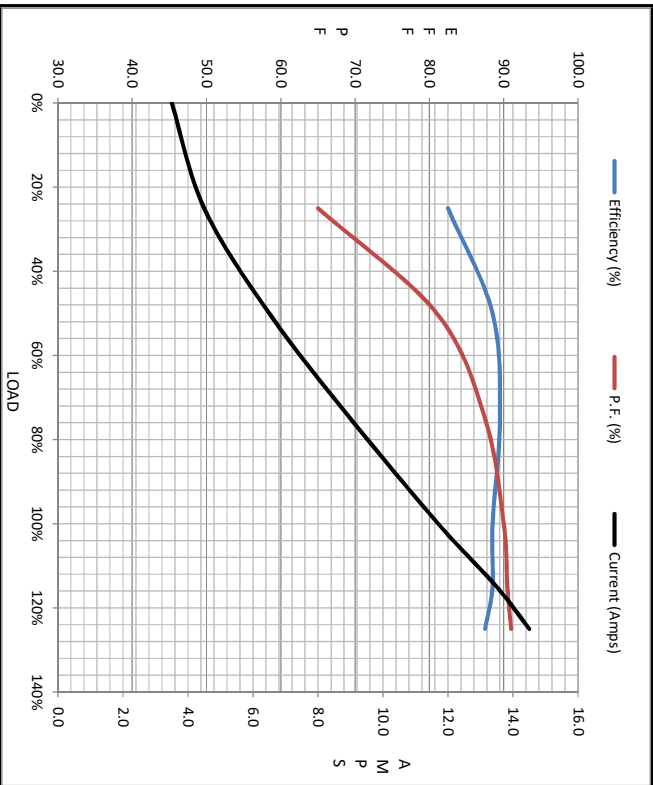
Load	0%	25%	50%	75%	100%	115%	125%	LR
Current (Amps)	3.5	4.5	6.5	9.0	11.7	13.5	14.5	81.0
Torque (ft-lb)	0.00	3.7	7.4	11.1	15.0	17.5	18.8	25.0
RPM	3600	3600	3600	3540	3515	3505	3490	0
P.F. (%)	13.0	82.5	88.5	89.5	88.5	87.5	87.5	43.0
		65.0	81.0	87.5	90.0	90.5	91.0	

Motor Speed Data

	LR	Pull-Up	BD	Rated	Idle
Speed (RPM)	0	1800	2985	3515	3600
Current (Amps)	81.0	72.0	53.5	11.7	3.5
Torque (ft-lb)	25.0	22.5	46.5	15.0	0.00

Information Block

HP	10.0
Sync. RPM	3600
Frame	213
Enclosure	DP
Construction	TDW
Voltage	230/460/230/460
Frequency	60
Design	A
LR Code letter	H
Service Factor	1.15
Temp Rise @ FL	25 °C
Duty	60 MIN
Ambient	40 °C
Elevation	1,000 feet
Rotor/Shaft wk ²	0.45 Lb-Ft ²
Ref Wdg	K213282 R6
Sound Pressure @ 1M	75 dbA
VFD Rating	NONE
Outline Dwg	A-SS86500LN-1115
Conn. Diag	A-EE7358-1N
Additional Specifications:	
0	
0	
EQUIV CKT (OHMS / PHASE)	
R1	R2
0.5680	0.5680
X1	X2
1.9880	1.1360
Xm	
	60.7760



Speed -Torque Curve

