

# PRODUCT INFORMATION PACKET



Model No: SD2S20TZY65YEH3

Catalog No: LM29661

20HP..3600RPM.160Z.ODP.575V.3PH.60HZ.ELEVATOR.NOT.70C.1.0SF.RIGID..  
Elevator Duty



Regal and Leeson are trademarks of Regal Beloit Corporation or one of its affiliated companies.

©2018 Regal Beloit Corporation, All Rights Reserved. MC017097E



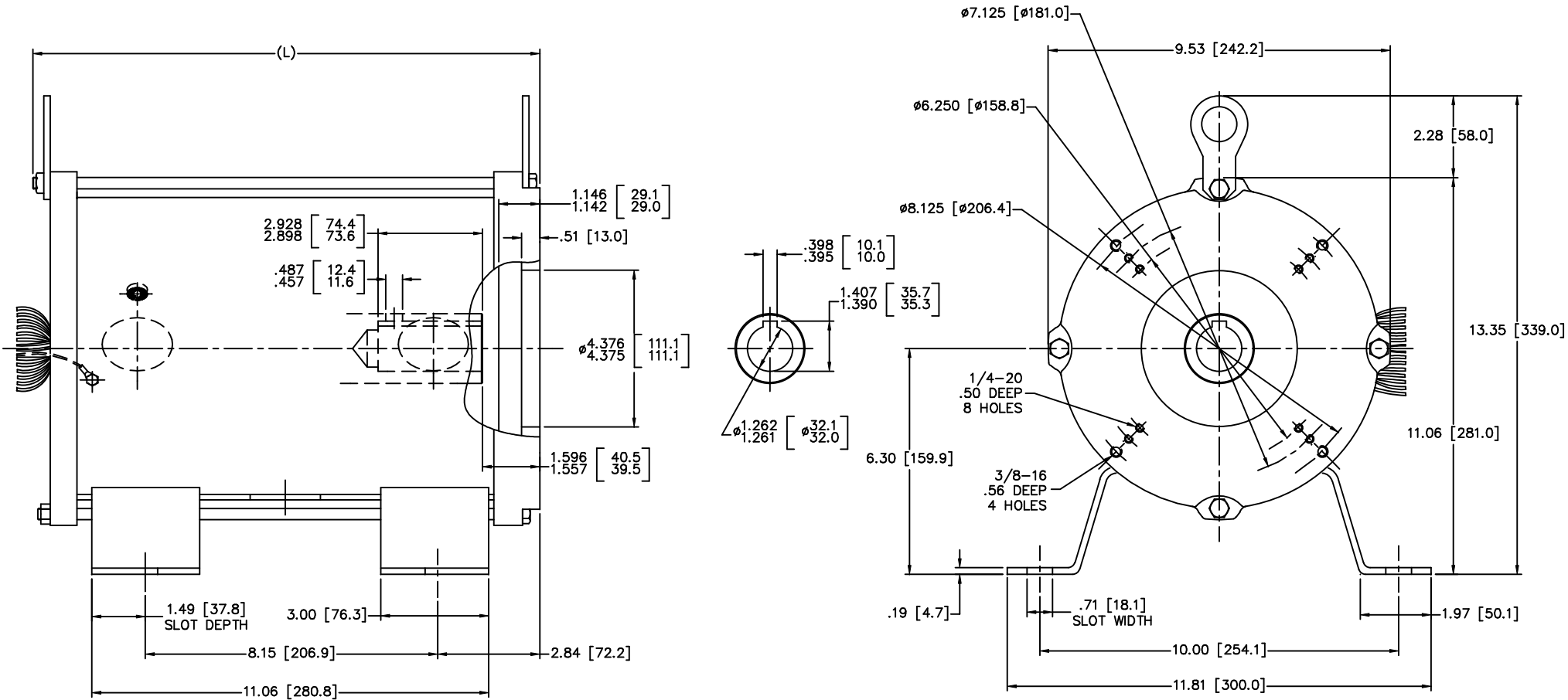


### Nameplate Specifications

Output HP	<b>20 Hp</b>	Output KW	<b>14.9 kW</b>
Frequency	<b>60 Hz</b>	Voltage	<b>575 V</b>
Current	<b>22.4 A</b>	Speed	<b>3495 rpm</b>
Service Factor	<b>1</b>	Phase	<b>3</b>
Efficiency	<b>77 %</b>	Duty	<b>30 Minute</b>
Insulation Class	<b>F</b>	Design Code	<b>NO DESIGN CODE</b>
KVA Code	<b>G</b>	Frame	<b>160Z</b>
Enclosure	<b>Open Enclosed</b>	Overload Protector	<b>No</b>
Ambient Temperature	<b>70 °C</b>	Drive End Bearing Size	<b>6307</b>
Opp Drive End Bearing Size	<b>6307</b>	UL	<b>Recognized</b>
CSA	<b>Y</b>	CE	<b>Y</b>
IP Code	<b>01</b>		

### Technical Specifications

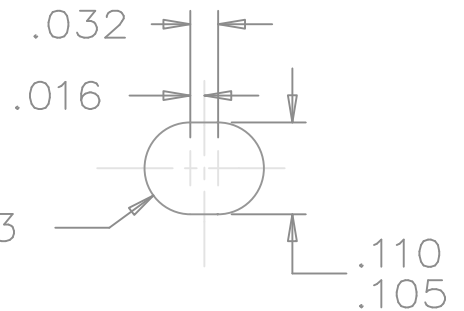
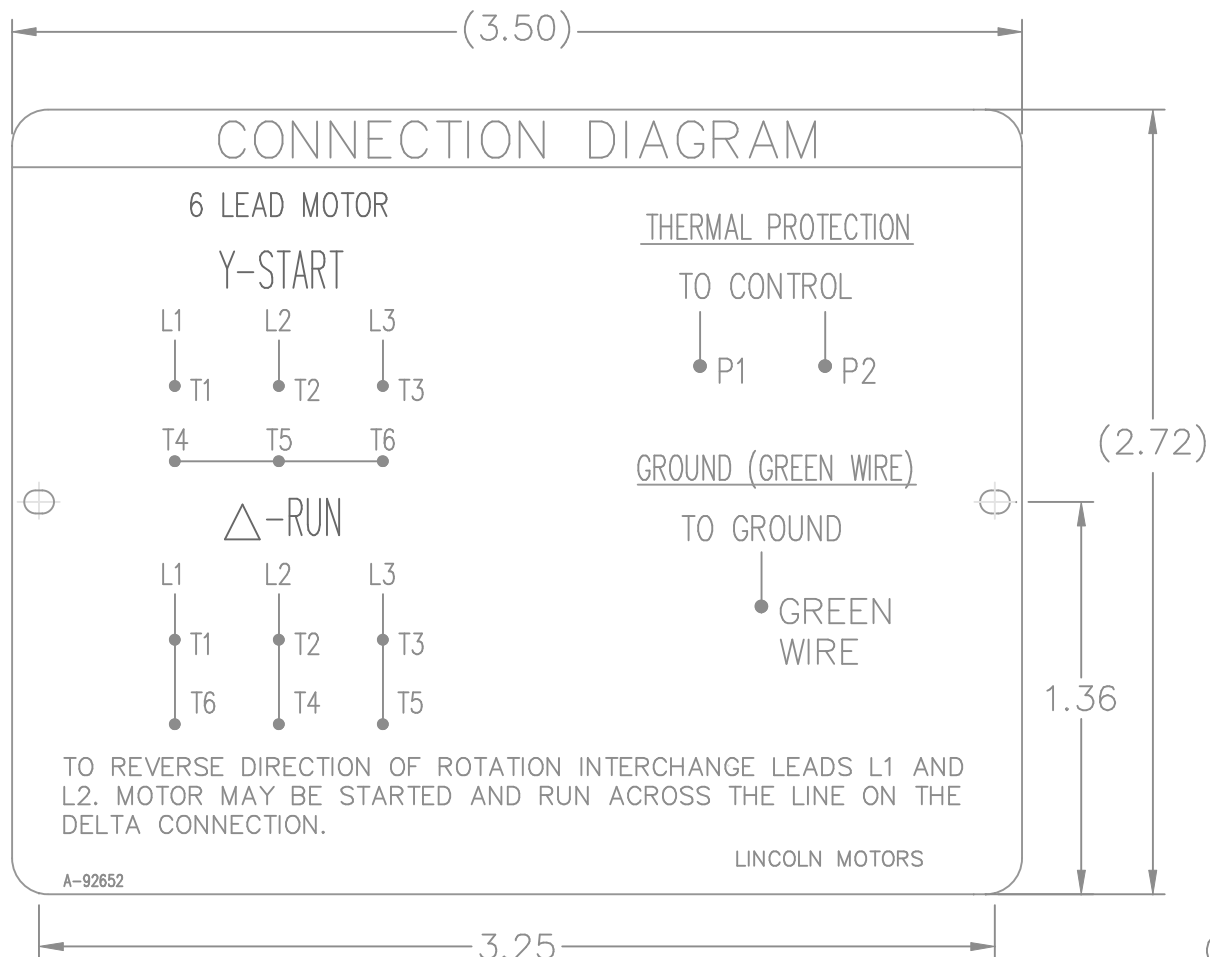
Electrical Type	<b>Squirrel Cage Induction Run</b>	Starting Method	<b>Wye Start Delta Run</b>
Poles	<b>2</b>	Rotation	<b>Reversible</b>
Mounting	<b>Rigid base</b>	Motor Orientation	<b>HORIZONTAL</b>
Drive End Bearing	<b>BALL</b>	Opp Drive End Bearing	<b>BALL</b>
Frame Material	<b>Rolled Steel</b>	Shaft Type	<b>Single Special Extension</b>
Overall Length	<b>14.53 in</b>	Frame Length	<b>12.00 in</b>
Shaft Diameter	<b>1.250 in</b>	Shaft Extension	<b>2.92 in</b>
Assembly/Box Mounting	<b>F1/F2 CAPABLE</b>		
Outline Drawing	<b>0216000039</b>	Connection Diagram	<b>A-92652</b>



TYPE	HP	L
160ZBS-2	15	14.53 [369.0]
160ZBS-2	20	
160ZBS-2	25	
160ZBS-2	30	
160ZBS-2	40	17.87 [454.0]
160ZBS-2	50	

(MAY NOT BE DRAWN TO SCALE)

		TOLERANCES UNLESS SPECIFIED		Lincoln MOTOR		DRAWN MSG 01-25-2007	
		DEC.	INCHES			CHK	ML 01-25-2007
		.X	±.1			APPD	GK 01-25-2007
		.XX	±.03	TITLE OUTLINE - SUBMERSIBLE ELEVATOR PUMP		SCALE 3=8	
		.XXX	±.005	160ZBS FR. - 3 PHASE - DUAL DIMENSIONS		REF	
1 UPDATED TO CURRENT STANDARDS		DRS	.XXXX ±.0005	MAT'L		FMF	HEBEI
NO.	REVISION	BY & DATE	CHK	ANG	FINISH	PREV	
THIS DRAWING IN DESIGN AND DETAIL IS OUR PROPERTY AND MUST NOT BE USED EXCEPT IN CONNECTION WITH OUR WORK ALL RIGHTS OF DESIGN AND INVENTION ARE RESERVED THIS IS AN ELECTRONICALLY GENERATED DOCUMENT - DO NOT SCALE THIS PRINT			RFP		CAD FILE 0216000039	SIZE B	DRAWING NO. 0216000039
			DIST			PAGE OF	REV. 1



NOTES:

1. MATERIAL 304 STAINLESS STEEL
2. LETTERING AND ARTWORK BLACK
3. ALL DATA MUST BE HYDRAULIC OIL RESISTANT.

			TOLERANCES UNLESS SPECIFIED			DRAWN CTO 02-18-2004					
			DEC.	INCHES		CHK	ML 02-18-2004				
			.X	±.1			APPD MS 02-18-2004				
			.XX	±.02		TITLE CONNECTION DIAGRAM PLATE					
			.XXX	±.005		SCALE 1.5=1					
			.XXXX	±.0005	REF						
NO.	REVISION	BY & DATE	CHK	ANG ±7'30"	MAT'L. 304 STAINLESS STEEL		FMF				
					FINISH		PREV				
THIS DRAWING IN DESIGN AND DETAIL IS OUR PROPERTY AND MUST NOT BE USED EXCEPT IN CONNECTION WITH OUR WORK ALL RIGHTS OF DESIGN AND INVENTION ARE RESERVED THIS IS AN ELECTRONICALLY GENERATED DOCUMENT - DO NOT SCALE THIS PRINT			RFP	02-18-2004	CAD FILE	92652	SIZE	DRAWING NO.	PAGE	OF	REV.
			DIST	WA			A	92652			



P.O. BOX 8003  
WAUSAU, WI 54401-8003  
PH. 715-675-3311

DATA VOLTS: 460

CERTIFICATION DATA SHEET

CONN. DIAGRAM: A-92652  
OUTLINE: 0216000039  
WINDING: 2152205

CAT #: LM29661

NONE 2

TYPICAL MOTOR PERFORMANCE DATA

HP	KW	SYNC RPM	FL RPM	FRAME	ENCLOSURE	TYPE	KVA CODE	DESIGN	
20	14.9	3600	3515	160M	OPEN	TDR	G	B	
PH	HZ	VOLTS	AMPS	START TYPE	DUTY	INSL	S.F.	AMB	ELEV.
3	60	575	21.2	NYE START DELTA RUI	30 MIN	F	1.15	70	3300
F.L. EFF	86.5	3/4 LD EFF	87.5	1/2 LD EFF	86.5	GTD EFF		ELECT. TYPE	
F.L. PF	80.0	3/4 LD PF	72.5	1/2 LD PF	58.5	68.0		SO CAGE IND RUN	
F.L. TORQUE	LR AMPS @ 460 V	L.R. TORQUE	B.D. TORQUE	F.L. RISE (°C)					
30.0 LB-FT	140	50.0 LB-FT	167%	80.0 LB-FT	267%	0			
PRESSURE @3	POWER	ROTOR WK²	MAX. LOAD WK²	SAFE STALL TIME	STARTS/HOUR	MOTOR WGT			
999 DBA	1008 DBA	0.00 LB-FT²	0 LB-FT²	0 SEC.	80	0 LB.			

\*\*\* SUPPLEMENTAL INFORMATION \*\*\*

DE BRACKET TYPE	ODE BRACKET TYPE	MOUNT TYPE	MOTOR ORIENTATION	SEVERE DUTY	HAZARDOUS LOCATION	DRIIP COVER	SCREENS	PAINT
STANDARD	STANDARD	RIGID	HORIZONTAL	NO	NONE	NO	NONE	GRAY - LINCOLN
BEARINGS DE	GREASE	SHAFT TYPE	SPECIAL DE	SPECIAL ODE	SHAFT MATERIAL	FRAME MATERIAL		
BALL BALL NONE	POLYREX EM	SGL SPL EXT	ELEVATOR MOTOR SH	NONE	SAISI 1045 (C-240)	ROLLED STEEL		
THERMOSTATS TSTATS (N/C)	PROTECTORS	WDG RTD's	BRG RTD's	THERMISTORS	CONTROL	SPACE HEATERS		
	NOT	NONE	NONE	NONE	FALSE	NA		
R1 (ohms/ph)	R2 (ohms/ph)	X1 (ohms/ph)	X2 (ohms/ph)	Xm (ohms/ph)	VIBRATION (in/sec)	FLOAT ODE		
0	0	0	0	0	0.150			

* NOT TESTED		INVERTER TORQUE: NONE	
		INV. HP SPEED RANGE: NONE	
		ENCODER: NONE	
		NONE	
		NONE	
		BRAKE: NONE	
		NONE	
		FT-LB: NA	
		NONE	
		NONE	
		NONE PPR	

DATE: 1/30/2018		VOLTAGE: NONE	HZ: NONE
		UL: VINS, CONST UL REC	

