

PRODUCT INFORMATION PACKET



Model No: AAF4B30TC61Y
Catalog No: LM16774
30,1800,TEFC,286TC,3/60/230/460
Totally Enclosed Fan Cooled (TEFC)



Regal and Leeson are trademarks of Regal Beloit Corporation or one of its affiliated companies.
©2018 Regal Beloit Corporation, All Rights Reserved. MC017097E





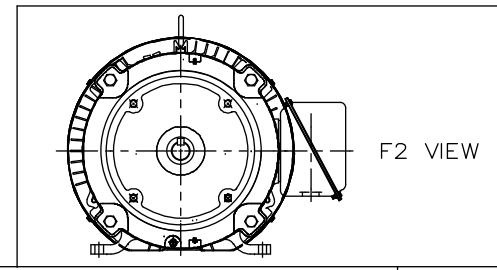
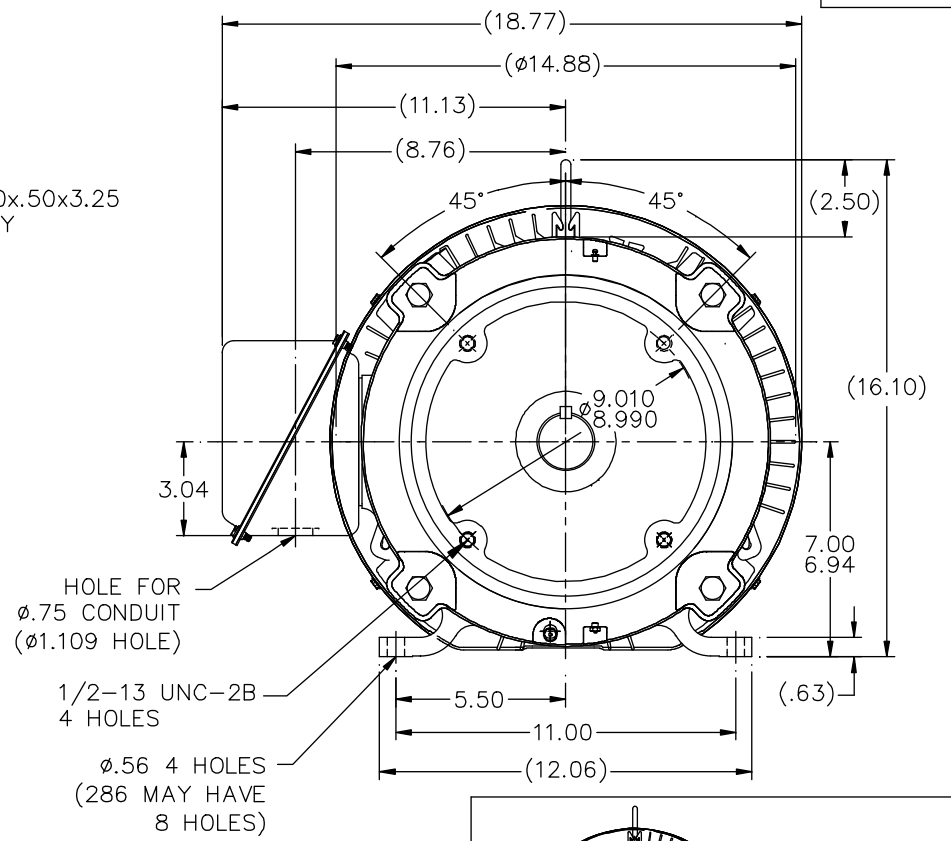
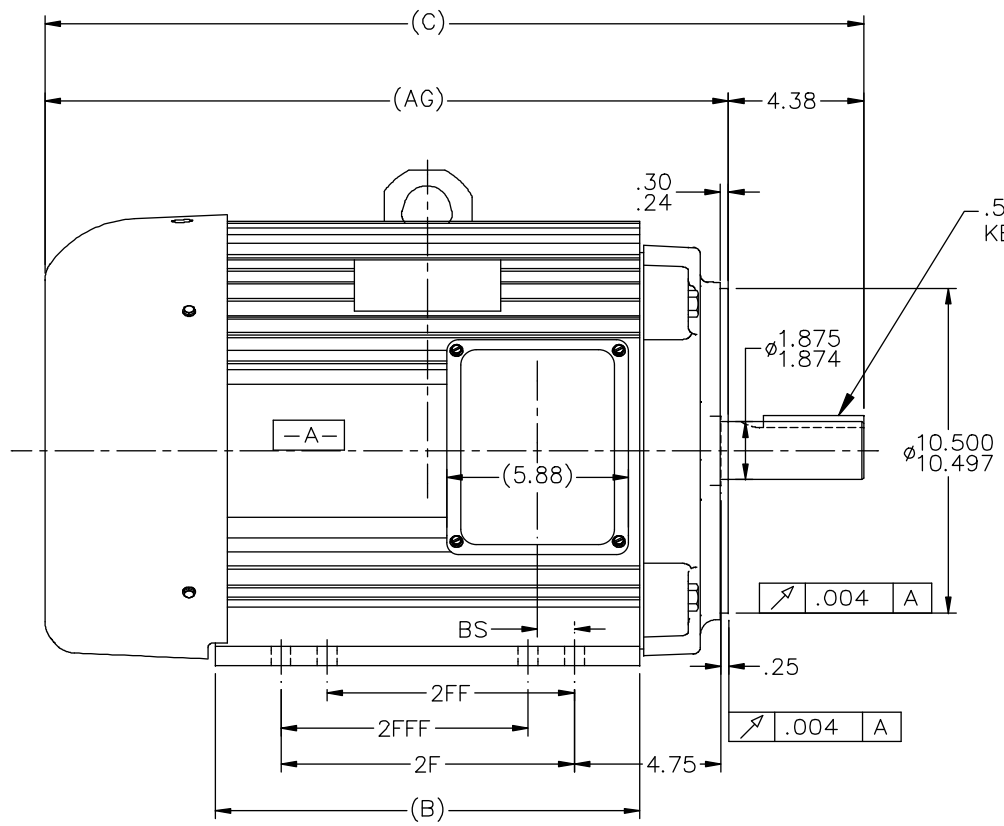
Nameplate Specifications

Output HP	30 Hp	Output KW	22.4 kW
Frequency	60 Hz	Voltage	230/460 V
Current	75.0/37.5 A	Speed	1777 rpm
Service Factor	1.25	Phase	3
Efficiency	93.6 %	Duty	Continuous
Insulation Class	F	Design Code	B
KVA Code	G	Frame	286TC
Enclosure	Totally Enclosed Fan Cooled	Overload Protector	No
Ambient Temperature	40 °C	Drive End Bearing Size	6312
Opp Drive End Bearing Size	6209	UL	Recognized
CSA	Y	CE	Y
IP Code	43		

Technical Specifications

Electrical Type	Squirrel Cage Induction Run	Starting Method	Wye Start Delta Run
Poles	4	Rotation	Reversible
Mounting	Rigid base	Motor Orientation	HORIZONTAL
Drive End Bearing	BALL	Opp Drive End Bearing	BALL
Frame Material	Aluminum	Shaft Type	T
Overall Length	28.01 in	Frame Length	15.25 in
Shaft Diameter	1.875 in	Shaft Extension	4.62 in
Assembly/Box Mounting	F1/F2 CAPABLE		
Outline Drawing	XF5F1SC1-1525	Connection Diagram	3A263-2

This is an uncontrolled document once printed or downloaded and is subject to change without notice. Date Created: 10/15/2018



- NOTES:
 1. CONDUIT BOX CAN BE ROTATED IN 90° STEPS.
 2. CONDUIT BOX CAN BE MOUNTED ON OPPOSITE SIDE BY REMOVING BRACKETS AND TURNING FRAME 180°.
 3. NAMEPLATE TO BE READ FROM CONDUIT BOX SIDE OF MOTOR.

DASH	FRAME	C	B	AG	2F	2FF	2FFF	BS
1375	284TC	26.51	13.88	22.13	9.50			1.69
1525	286TC	28.01	15.38	23.63	11.00	9.50	9.50	1.69

NO.		REVISION		BY & DATE		CHK ANG		TOLERANCES UNLESS SPECIFIED		Lincoln MOTORS		DRAWN TJB 06-11-2002	
								INCHES				CHK ML 06-14-2002	
5	"BS" DIMS WERE 1.19	ECO-0038409	WGJ	09-19-2013	EMH	DEC.							APPD TB 06-14-2002
4	ADDED "HOLE FOR φ.75 CONDUIT"	CN 38458	HLB	09-28-2004	ML	.X	±.1						SCALE 1=4
3	ADDED (B) DIM. TO DRAWING PER	33393	CTO	12-01-2003	TB	.XX	±.02			TITLE OUTLINE			
2	ADDED FRAME MOUNTING HOLE SIZE PER	CN 32165	CTO	04-03-2003	ML	.XXX	±.005			280TC TEFC UEI			REF
1	NEW DRAWING	MU41925	TJB	06-14-2002	TB	.XXXX	±.0005			MAT'L.			FMF
						ANG ±7°30'		FINISH				PREV	
						RFP		CAD FILE xf5f1sc1		SIZE		DRAWING NO. PAGE OF REV.	
						DIST LB-BY				B		XF5F1SC1 5	



CERTIFICATION DATA SHEET

2100 WASHINGTON ST.
 GRAFTON, WI
 PH. 262-277-8810

CONN. DIAGRAM: 3A263-2

OUTLINE: XE5F1SC1-1525

CATALOG #: LM16774

WINDING #: L2864032 1

MOUNTING: F1/F2 CAPABLE

TYPICAL MOTOR PERFORMANCE DATA

HP	KW	SYNC. RPM	F.L. RPM	FRAME	ENCLOSURE	KVA CODE	DESIGN	
30825	22.48&18.7	1800	1777&1475	286TC	TEFC	G	B	
PH	HZ	VOLTS	AMPS	START TYPE	DUTY	INSL	S.F.	AMP°C
3	60/50	230/460&380-415	75/37.5&37.5-36	WVE START DELTA RUN	CONTINUOUS	F3	1.25/1.15	40

FULL LOAD EFF:	93.6&92.4	3/4 LOAD EFF:	94.1	1/2 LOAD EFF:	93.6	GTD. EFF	92.4	ELEC. TYPE	
FULL LOAD PF:	80&81.5	3/4 LOAD PF:	75.5	1/2 LOAD PF:	66		92.4	SQ CAGE IND RUN	

F.L. TORQUE	LOCKED ROTOR AMPS	L.R. TORQUE	B.D. TORQUE	F.L. RISE°C
88.5 LB-FT	434 / 217	218 LB-FT 246 %	190 LB-FT 215 %	70

SOUND PRESSURE @ 3 FT.	SOUND POWER	ROTOR WK^2	MAX. WK^2	SAFE STALL TIME	STARTS / HOUR	APPROX. MOTOR WGT
- DBA	- DBA	5.3 LB-FT^2	- LB-FT^2	- SEC.	-	0 LBS.

*** SUPPLEMENTAL INFORMATION ***

DE BRACKET TYPE	ODE BRACKET TYPE	MOUNT TYPE	ORIENTATION	SEVERE DUTY	HAZARDOUS LOCATION	DRIIP COVER	SCREENS	PAINT
C-FACE	STANDARD	RIGID	HORIZONTAL	FALSE	NONE	FALSE	NONE	GRAY (ENAMEL)

BEARINGS		GREASE	SHAFT TYPE	SPECIAL DE	SPECIAL ODE	SHAFT MATERIAL	FRAME MATERIAL
DE	ODE						
BALL	BALL	POLYREX EM	T	NONE	NONE	1045 HOT ROLLED (C-204)	ALUMINIUM
6312	6209						

THERMO-PROTECTORS				THERMISTORS			
THERMOSTATS	PROTECTORS	WDG RTDS	BRG RTDS				
NONE	NOT	NONE	NONE	NONE	FALSE	NONE	NONE

INVERTER TORQUE: NONE
 INV. HP SPEED RANGE: NONE

ENCODER: NONE
 NONE
 NONE
 NONE PPR

BRAKE: NONE
 NONE
 NONE P/N NONE
 NONE
 NONE
 FT-LB NONE V NONE HZ

*
 N
 O
 T
 E
 S
 *

Data Sheet

Date: 1/18/2018

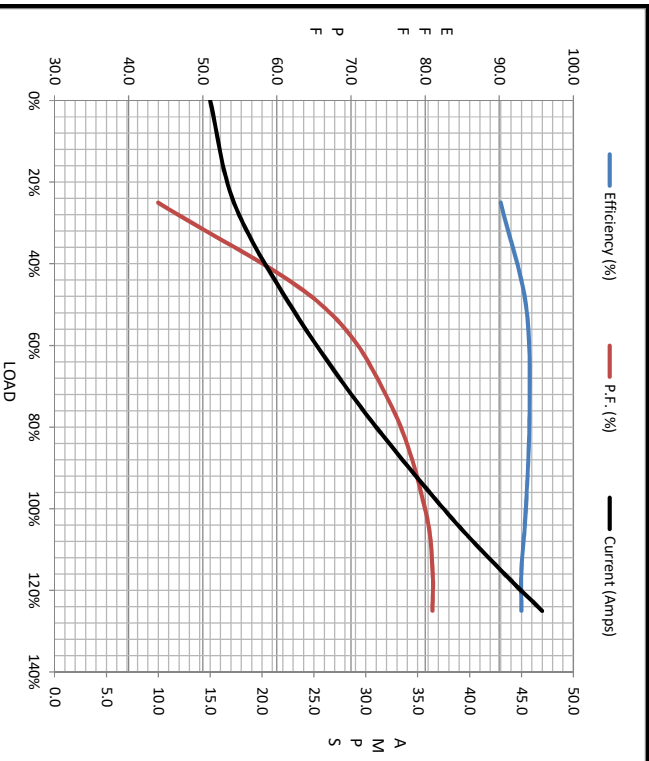
LM16774



Data @ 460 V

Motor Load Data						
Load	0%	25%	50%	75%	100%	LR
Current (Amps)	15.0	17.3	22.7	29.5	37.5	217
Torque (ft-lb)	0.00	22.0	44.0	66.5	88.5	218
RPM	1800	1795	1790	1783	1777	0
Efficiency (%)		90.2	93.6	94.1	93.6	
P.F. (%)	3.0	44.0	66.0	75.5	80.0	44.0

Motor Speed Data						Information Block																		
LR	Pull-Up	BD	Rated	Idle		HP	Sync. RPM	Frame	Enclosure	Construction	Voltage	Frequency	Design	LR Code letter	Service Factor	Temp Rise @ FL	Duty	Ambient	Elevation	Rotor/Shaft wk ²	Ref Wdg	Sound Pressure @ 1M	VFD Rating	
0	1350	1705	1777	1800		30.0	1800	286	TEFC	TFL	230/460#380-415	60	B	G	1.15	70	CONT	40	1,000	5.3	NONE	999	NONE	
217	195	112	37.5	15.0																				
218	136	190	88.5	0.00																				



EQUIV CKT (OHMS / PHASE)			
R1	R2	X1	Xm
0.1680	0.0950	0.7090	1.3420 17.6720
Additional Specifications:			
Outline Dwg X55F1SC1-1525			
Conn. Diag 3A263-2			
VFD Rating NONE			
Sound Pressure @ 1M 999 dBA			
Rotor/Shaft wk ² 5.3			
Ref Wdg L2864032 NONE			
Elevation 1,000 feet			
Ambient 40 °C			
Duty CONT			
Temp Rise @ FL 70 °C			
Service Factor 1.15			
LR Code letter G			
Design B			
Frequency 60 Hz			
Voltage 230/460#380-415 V			
Construction TFL			
Enclosure TEFC			
Frame 286			
Sync. RPM 1800			
HP 30.0			

