

# PRODUCT INFORMATION PACKET



Model No: 5KCR48UN0102Y

Catalog No: EG277

General Purpose Motor, 1 HP, 1 Ph, 60/50 Hz, 100-120/200-240 V, 56C Frame, DP



Regal and LEESON are trademarks of Regal Rexnord Corporation or one of its affiliated companies.  
©2025 Regal Rexnord Corporation, All Rights Reserved. MC017097E





**Nameplate Specifications**

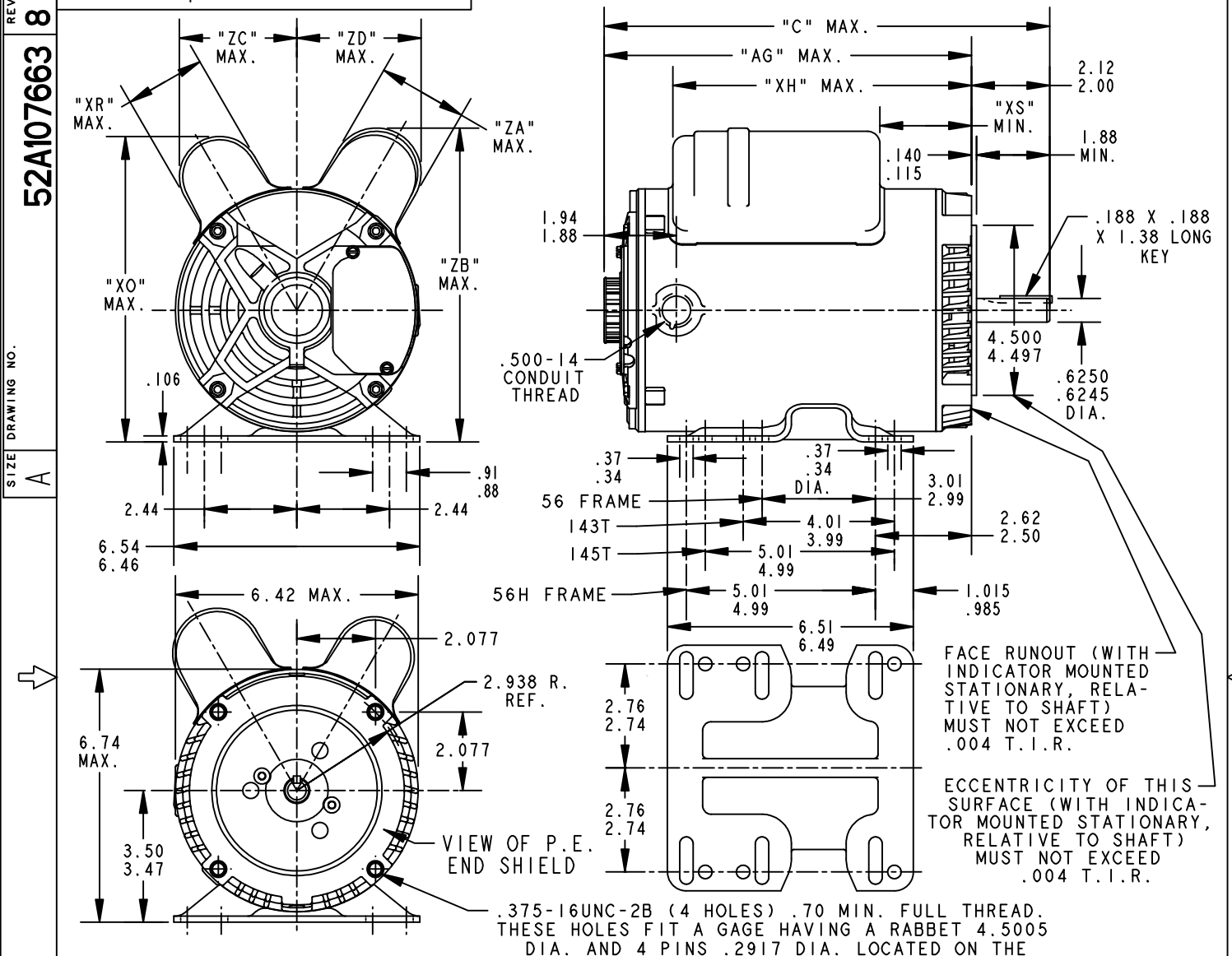
Phase	1	Output HP	1 Hp
Output KW	0.75 kW	Voltage	100-120/200-240 V
Speed	1725/1425 rpm	Service Factor	1.15
Frame	56C	Enclosure	Drip Proof
Thermal Protection	Manual	Ambient Temperature	40 °C
Frequency	60/50 Hz	Current	11.8-11.4/5.9-5.7 A
Power Factor	0	Duty	Continuous
Insulation Class	B	KVA Code	L
Drive End Bearing Size	6203	Opp Drive End Bearing Size	6203
UL	Recognized	CSA	Y
CE	N		

**Technical Specifications**

Electrical Type	Capacitor Start Capacitor Run	Starting Method	Across The Line
Poles	4	Rotation	Selective Counterclockwise
Motor Orientation	Any	Drive End Bearing	Locked
Opp Drive End Bearing	Ball	Frame Material	Rolled Steel
Shaft Type	NEMA 56C	Shaft Diameter	0.625 in
Connection Drawing	52A105383AC	Outline Drawing	52A107663P2

This is an uncontrolled document once printed or downloaded and is subject to change without notice. Date Created:11/13/2025

SHEET —	THIRD ANGLE PROJECTION	REVISIONS			
		REV.	DESCRIPTION	DATE	APPROVED
REV 52A107663 8		9	ADDED PART #5 PER DS09-1045	07/15/09	ARCHANA



ALL DIMENSIONS ARE IN INCHES

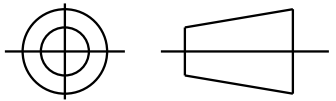
REV	TYPE	GE SIZE	NEMA FR.	"C"	"AG"	"XH"	"XO"	"XR"	"XS"	"ZA"	"ZB"	"ZC"	"ZD"	MIN. SHELL
5	KCR	49	56CY	13.86	11.74	9.67	8.18	2.10	4.00	2.40	8.39	3.14	3.33	9.63
4	KCR	49	56CY	13.86	11.74	8.19	8.18	2.15	2.44	2.72	8.77	3.20	3.66	9.63
3	KCR	49	56CY	13.22	11.10	8.17	8.18	2.15	1.86	2.72	8.77	3.20	3.66	8.99
2	KCR	48	56CY	12.66	10.54	7.61	8.18	2.15	1.86	2.72	8.77	3.20	3.66	8.43
1	KCR	49	56CY	11.91	9.79	8.07	8.18	2.15	2.32	2.40	8.40	3.20	3.38	7.68

FOR ADDITIONAL INFO REFER TO: APPLIED PRACTICES DIMENSIONS ARE IN INCHES	SIGNATURES	DATE	<b>REGAL-BELOIT CORPORATION</b>
	MODEL	M.D.PAPE	
	DETAIL	.	TITLE
	CHECKED	.	<b>OUTLINE</b>
	ENGRG	.	<b>GENERAL PURPOSE MOTOR DRIP PROOF - BALL BEARING - WELDED BASE R2 END MOUNTED FMF - 40 FRAME REDESIGN</b>
	MFG	.	SIZE DRAWING
	QUALITY	.	<b>52A107663</b>
	ISSUED	M.D.PAPE	02/27/92
MATERIAL	SOLID MODEL: 52A107663		SCALE: 0.250 REF. No: .
			SHEET 1 of 1



SHEET  
REV  
4

THIRD ANGLE PROJECTION

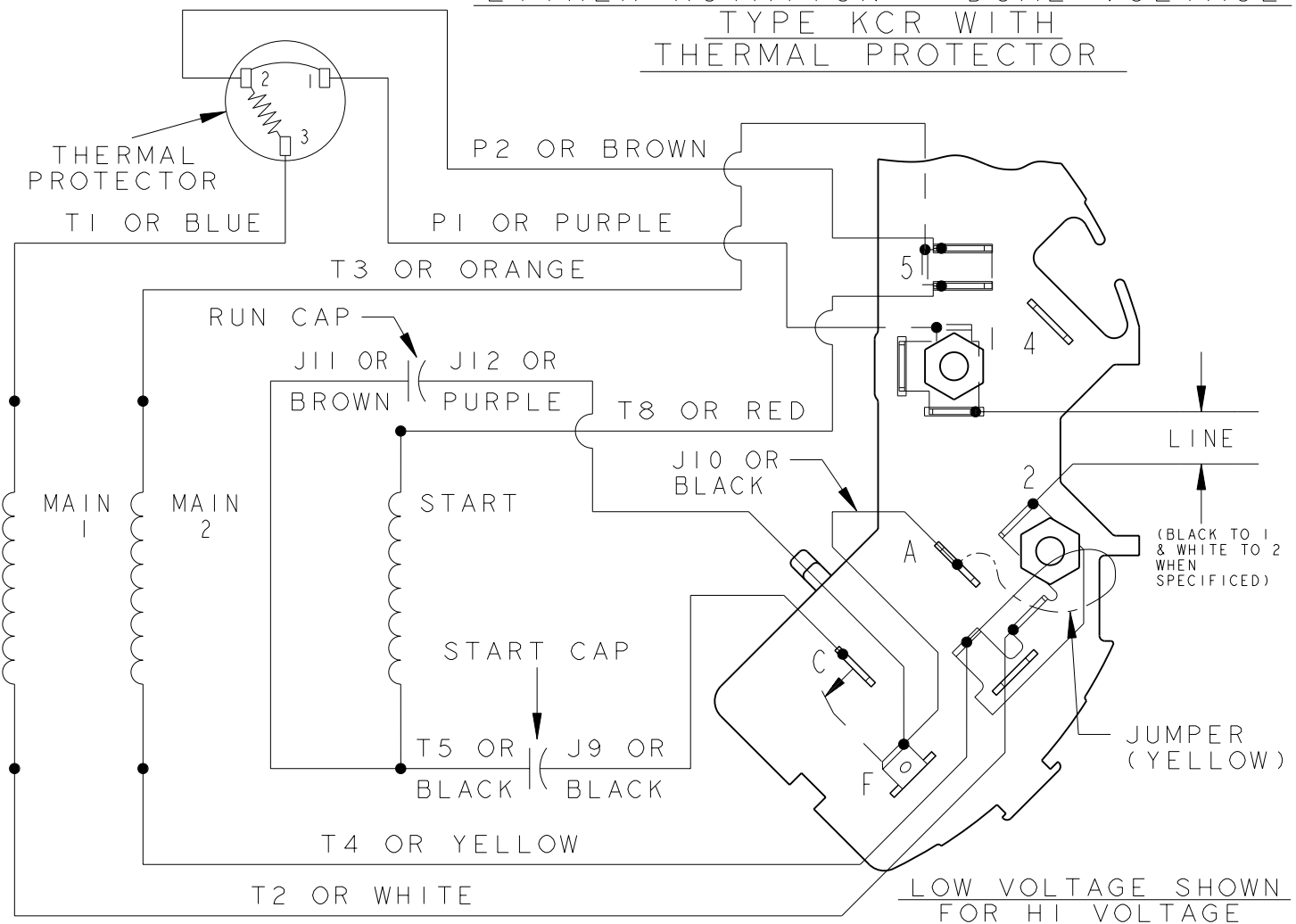


REVISIONS

REV.	DESCRIPTION	DATE	APPROVED
4	ADDED NOTE FOR LINE LEAD PER DS09-1045	07/15/09	ARCHANA

SIZE DRAWING NO.  
52A105383AC

EITHER ROTATION - DUAL VOLTAGE  
TYPE KCR WITH  
THERMAL PROTECTOR



LOW VOLTAGE SHOWN  
FOR HI VOLTAGE  
SEE NOTE #1

- NOTE #1 - FOR HI VOLTAGE REMOVE BROWN (P2) FROM TERMINAL #5 AND PLACE ON TERMINAL #4, REMOVE WHITE (T2) FROM TERMINAL #2 AND PLACE ON TERMINAL #5.
- NOTE #2 - TO REVERSE ROTATION INTERCHANGE BLACK (J10) AND RED (T8) LEADS.
- NOTE #3 - WHEN MORE THAN ONE CAPACITOR IS USED CONNECT IN PARALLEL.

SWITCH - 115D958AC

REF. DIAG. - NONE

CONNECTION LABEL - 52X332051

SIGNATURES		DATE
MODEL	M. D. PAPE	03/03/88
DETAIL	.	.
CHECKED	.	.
ENGRG	.	.
MFG	.	.
FOR ADDITIONAL INFO REFER TO:	QUALITY	.
APPLIED PRACTICES	ISSUED	M. D. P. 03/03/88
DIMENSIONS ARE IN INCHES ✓	SOLID MODEL: 52A105383AC	



REGAL-BELOIT CORPORATION

TITLE		<b>CONNECTION DIAGRAM</b>	
FMF:		<b>30 FRAME SWITCH REDESIGN</b>	
SIZE	DRAWING	<b>52A105383AC</b>	REV <b>4</b>
A	SCALE: 1.000	REF. No: .	SHEET 1 of 1

