

PRODUCT INFORMATION PACKET



Model No: 5K49PN3052
Catalog No: K280
Fan and Blower Motor, 3/4-1/4 HP, 3 Ph, 60 Hz, 460 V, 56 Frame, DP



Regal and LEESON are trademarks of Regal Rexnord Corporation or one of its affiliated companies.
©2025 Regal Rexnord Corporation, All Rights Reserved. MC017097E





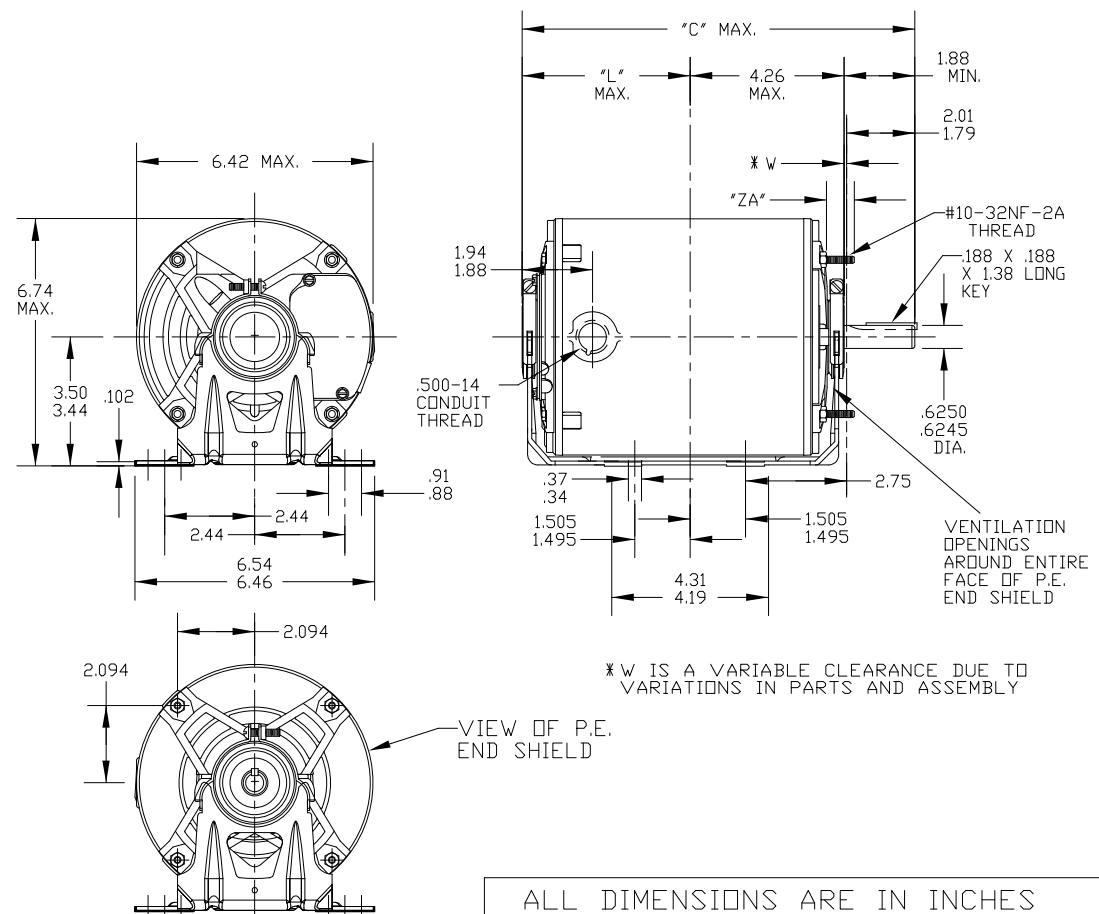
Nameplate Specifications

Phase	3	Output HP	3/4-1/4 Hp
Output KW	0.56 kW	Voltage	460 V
Speed	1725/1140 rpm	Service Factor	1.25
Frame	56	Enclosure	Drip Proof
Thermal Protection	No Protection	Ambient Temperature	40 °C
Frequency	60 Hz	Current	1.3/0.7 A
Power Factor	0	Duty	Continuous
Insulation Class	B	Design Code	B
KVA Code	M	Drive End Bearing Size	6203
Opp Drive End Bearing Size	6203	UL	Recognized
CSA	Y	CE	N

Technical Specifications

Electrical Type	Capacitor Start Capacitor Run	Starting Method	Across The Line
Poles	4	Rotation	Counterclockwise/Clockwise
Motor Orientation	Any	Drive End Bearing	Ball
Opp Drive End Bearing	Ball	Frame Material	Rolled Steel
Shaft Type	NEMA 56	Shaft Diameter	0.625 in
Connection Drawing	113A930FIG7	Outline Drawing	52A109511P3

This is an uncontrolled document once printed or downloaded and is subject to change without notice. Date Created:11/13/2025



ALL DIMENSIONS ARE IN INCHES

4	KH/K	49	56	12.01	5.75	.62					7.68
3	KH/K	49	56	11.48	5.22	.62					7.15
2	KH/K	46	56	10.88	4.62	.62					6.55
1	KH/K	46	56	10.88	4.62	.62					6.55
P	TYPE	GE SIZE	NEMA FR.	"C"	"L"	"ZA"					MIN. SHELL

				TOLERANCES UNLESS SPECIFIED		Regal Beloit America, Inc.		DRAWN M.A.M 03/29/94			
				DEC.	INCHES			CHK			
				.X	±.1			APPD M.A.M 03/29/94			
				.XX	±.03	TITLE OUTLINE		SCALE 1=4			
4	UPDATED BASE AS PER ECR-0224925			PS	09/29/2023	SN	.XXX	±.005	GENERAL PURPOSE MOTOR - DRIP PROOF - BALL BEARING - RESILIENT BASE EXTENDED CLAMP SCREWS FMF - 40 FRAME REDESIGN		
3	CHG TO RBC FORMAT PER IS05-1777				03/16/06	SUDHA	.XXXX	±.0005	MAT'L.		
NO.	REVISION			BY & DATE	CHK	ANG	± 7'30"	FINISH			
THIS DRAWING IN DESIGN AND DETAIL IS OUR PROPERTY AND MUST NOT BE USED EXCEPT IN CONNECTION WITH OUR WORK ALL RIGHTS OF DESIGN AND INVENTION ARE RESERVED THIS IS AN ELECTRONICALLY GENERATED DOCUMENT - DO NOT SCALE THIS PRINT				RFP	CAD FILE 52A109511				SIZE	DRAWING NO. PAGE OF	REV.
				DIST					A	52A109511	4



SHEET —
REV 2
113A930FIG7

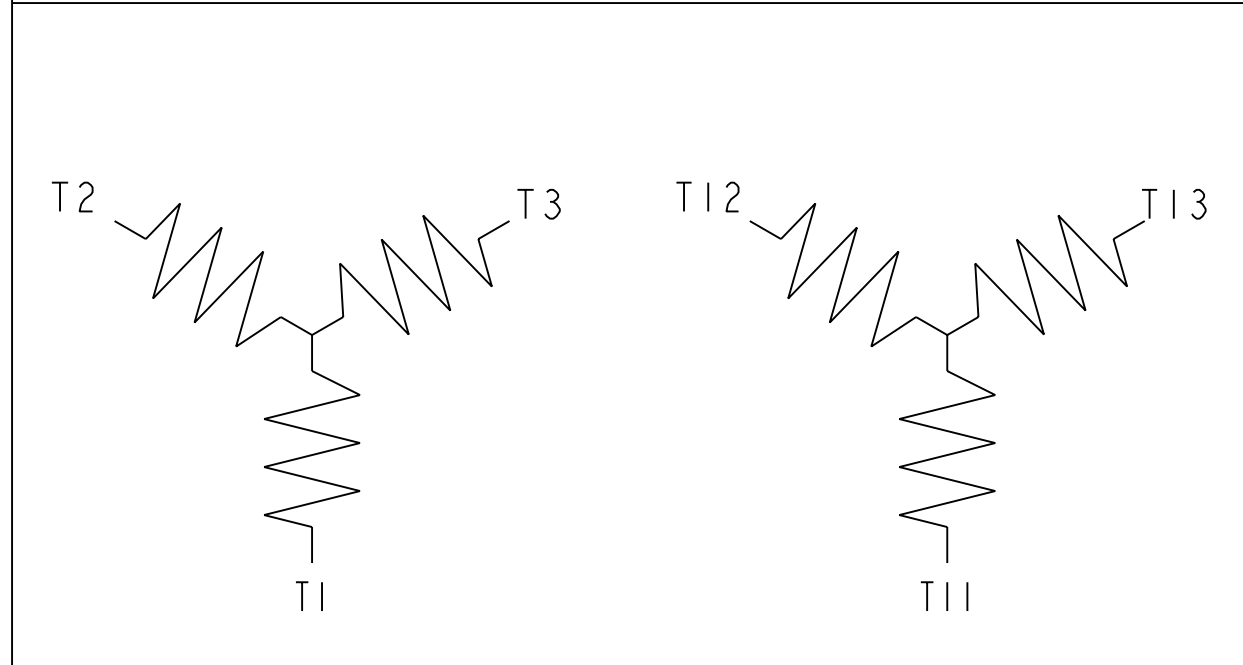
RBC PROPRIETARY AND CONFIDENTIAL INFORMATION

This document is the property of REGAL BELOIT CORPORATION ("RBC") including its subsidiaries and divisions and contains proprietary information of RBC. This document is loaned on the express condition that neither it nor the information contained therein shall be disclosed to others without the express written consent of RBC, and that the information shall be used by the recipient only as approved expressly by RBC. This document shall be returned to RBC upon its request. This document may be subject to certain restrictions under U.S. export control laws and regulations.

THIRD ANGLE PROJECTION


REVISIONS			
REV.	DESCRIPTION	DATE	APPROVED
1	CHG TO RBC FORMAT PER ISO5-1777	06/15/06	MADHU
2	RENAMED 113A930_FIG_7 TO 113A930FIG7 PER ISO7-0972	05/08/07	MADHU

FIG. 7 - 3 PHASE, 2 SPEED, 2 WINDING



	SPEED	L1	L2	L3	OPEN
IY	LOW	T1	T2	T3	T11, T12, T13
IY	HIGH	T11	T12	T13	T1, T2, T3

FOR ADDITIONAL INFO REFER TO:	SIGNATURES	DATE
APPLIED PRACTICES	MODEL M. D. PAPE	02/25/03
DIMENSIONS ARE IN INCHES	DETAIL	.
TOLERANCE ON:	CHECKED	.
1 PL DECIMALS ± 0.1	ENGRG	.
2 PL DECIMALS ± 0.02	MFG	.
3 PL DECIMALS ± 0.005	QUALITY	.
ANGLES ± 1.0	ISSUED	M. D. PAPE 02/25/03
FRACTIONS ±		
FINISH ✓		
MATERIAL	SOLID MODEL: 113A930FIG7	



REGAL-BELOIT CORPORATION

TITLE **CONNECTION DIAGRAM**

SIZE	DRAWING
A	

113A930FIG7

REV 2

SCALE: 1.000	REF. No: .	SHEET 1 of 1
--------------	------------	--------------

