

PRODUCT INFORMATION PACKET



Model No: C324T17FC6AA

Catalog No: 171509.60

.40HP..1800RPM.324TC.TEFC.230/460V.3PH.60HZ.CONT.40C.1.15SF.C FACE.....GENERAL
PURPOSE.....

Totally Enclosed Fan Cooled (TEFC)



Regal and Leeson are trademarks of Regal Beloit Corporation or one of its affiliated companies.

©2018 Regal Beloit Corporation, All Rights Reserved. MC017097E





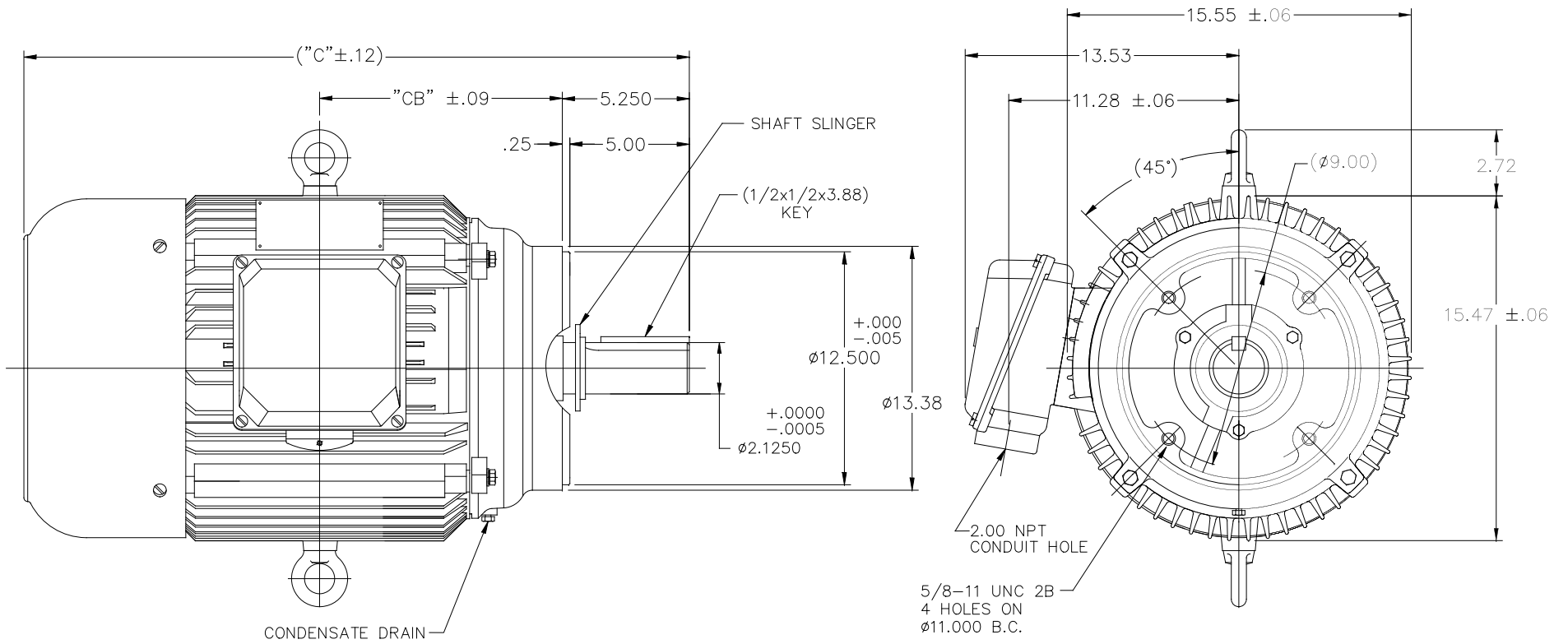
Nameplate Specifications

Output HP	40 Hp	Output KW	30.0 kW
Frequency	60 Hz	Voltage	230/460 V
Current	92.0/46.0 A	Speed	1780 rpm
Service Factor	1.15	Phase	3
Efficiency	94.1 %	Duty	Continuous
Insulation Class	F	Design Code	B
KVA Code	G	Frame	324TC
Enclosure	Totally Enclosed Fan Cooled	Overload Protector	No
Ambient Temperature	40 °C	Drive End Bearing Size	6312
Opp Drive End Bearing Size	6312	UL	Recognized
CSA	Y	CE	Y
IP Code	43		

Technical Specifications

Electrical Type	Squirrel Cage Inverter Rated	Starting Method	Wye Start Delta Run Or Inverter
Poles	4	Rotation	Reversible
Mounting	Round	Motor Orientation	HORIZONTAL
Drive End Bearing	BALL	Opp Drive End Bearing	BALL
Frame Material	Cast Iron	Shaft Type	T
Overall Length	29.53 in	Shaft Diameter	2.125 in
Shaft Extension	5 in	Assembly/Box Mounting	F1/F2 CAPABLE
Outline Drawing	SS620781	Connection Diagram	00417201

This is an uncontrolled document once printed or downloaded and is subject to change without notice. Date Created: 10/15/2018



DRAWING NOT TO SCALE

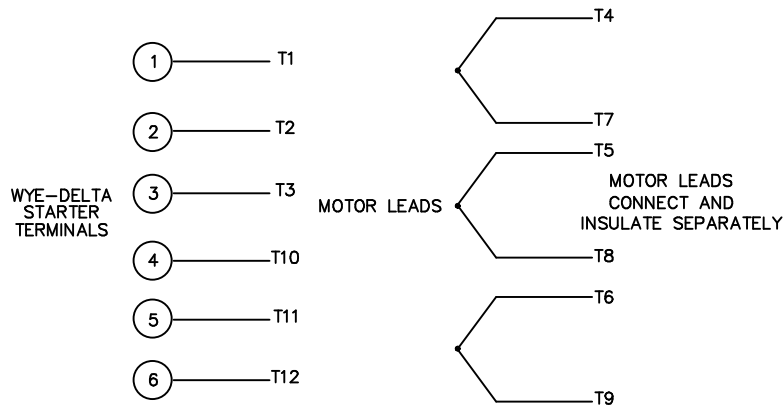
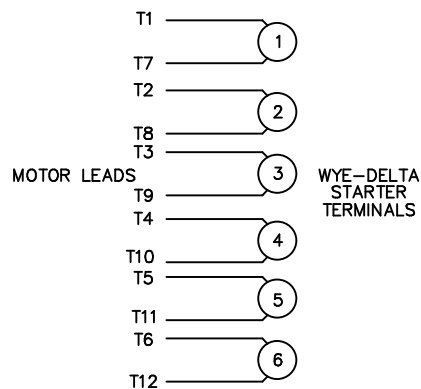
326T	31.02	11.48
324T	29.53	10.73
FRAME	C	CB

		TOLERANCES UNLESS SPECIFIED		LEESON		ELECTRIC MOTORS GEARMOTORS AND DRIVES		DRAWN LEM 09-29-1999	
		DEC.	INCHES	CHK	ANG	SCALE	REF	CM DWG	169580-60
		.X	±.1			TITLE	OUTLINE - 320T FR - TEFC - C'FACE	APPD	ADS 10-13-1999
		.XX	±.03			MEETS	NEC/UL REQ CON BOX VOL = 4140CC	SCALE	NONE
		.XXX	±.005			MAT'L.		REF	CM DWG 169580-60
A	RELEASED FOR PRODUCTION	ECO-0117389	WGJ	01-31-17	EMH	.XXXX	±.0005	FINISH	
NO.	REVISION	BY & DATE	CHK	ANG	CHK	ANG	±7'30"	CAD FILE	SS622299
THIS DRAWING IN DESIGN AND DETAIL IS OUR PROPERTY AND MUST NOT BE USED EXCEPT IN CONNECTION WITH OUR WORK ALL RIGHTS OF DESIGN AND INVENTION ARE RESERVED THIS IS AN ELECTRONICALLY GENERATED DOCUMENT - DO NOT SCALE THIS PRINT								RFP	
								DIST	
								SIZE	DRAWING NO. PAGE OF REV.
								B	SS620781 A

WYE - DELTA STARTING USEABLE ON 2,4 AND 6 POLE MOTORS.

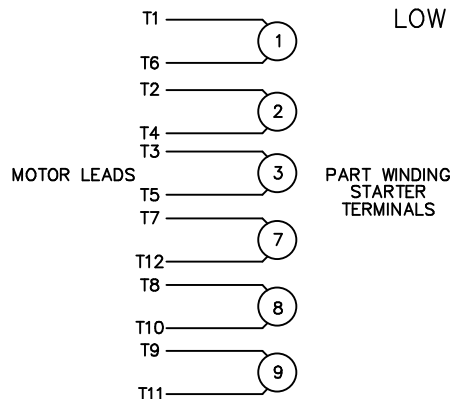
LOW VOLTAGE CONNECTION

HIGH VOLTAGE CONNECTION



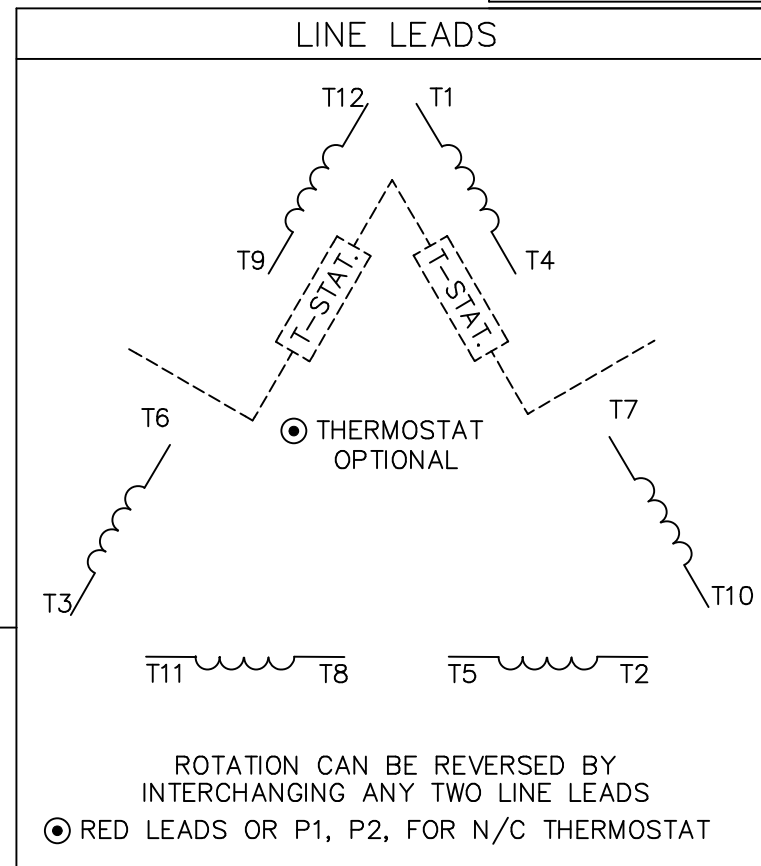
REFER TO THE WYE-DELTA STARTER CONNECTION INSTRUCTIONS FOR PROPER CONNECTION OF POWER LINES TO STARTER.

PART WINDING START USABLE ON 4 & 6 POLE MOTORS
LOW VOLTAGE CONNECTION ONLY



REFER TO THE PART WINDING STARTER INSTRUCTIONS FOR PROPER CONNECTION OF POWER LINES TO STARTER.

REFER TO THE CUTLER - HAMMER OR EQUIV. FOR PROPER SELECTION OF OVERLOAD HEATER COILS.



ACROSS THE LINE START & RUN				
	LINE 1	LINE 2	LINE 3	JOIN & INSULATE SEPARATELY
HIGH VOLT	T1,T12	T2,T10	T3,T11	(T4,T7) (T5,T8) (T6,T9)
LOW VOLT	T1,T6 T7,T12	T2,T4 T8,T10	T3,T5 T9,T11	

NO.	REVISION	BY & DATE	CHK	TOLERANCES UNLESS SPECIFIED		FINISH
				DEC.	INCHES	
				.X	±.1	
03	REV'D LOW VOLTAGE CONN. LEADS PER ELEC.	BJB 06/07/00		.XX	±.01	TITLE DELTA - WYE CONNECTION DIAGRAM
02	ADDED T-STAT. NOTES PER ELECTRICAL	KMM 06/02/98		.XXX	±.005	
01	REDRAWN TO CAD	DBT 06/02/97		.XXXX	±.0005	MAT'L.
				ANG	±1/2'	



ELECTRIC MOTORS
GEARMOTORS
AND DRIVES

DRAWN	WLW 09/08/77
CHK	RPB 09/12/77
APPD	JCW 09/12/77
SCALE	1=1
REF	
FMF	
PREV	

THIS DRAWING IN DESIGN AND DETAIL IS OUR PROPERTY AND MUST NOT BE USED EXCEPT IN CONNECTION WITH OUR WORK ALL RIGHTS OF DESIGN AND INVENTION ARE RESERVED THIS IS AN ELECTRONICALLY GENERATED DOCUMENT - DO NOT SCALE THIS PRINT			RFP	CAD FILE	00417201	SIZE	DRAWING NO.	REV.
			DIST			A	004172-01	03



P.O. BOX 8003
WAUSAU, WI 54401-8003
PH. 715-675-3311

DATA VOLTS: 460

CERTIFICATION DATA SHEET

CONN. DIAGRAM: 00417201
OUTLINE: SS620781
WINDING: T16104005

CAT #: 171509.60

NONE 3

TYPICAL MOTOR PERFORMANCE DATA

HP	KW	SYNC RPM	FL RPM	FRAME	ENCLOSURE	TYPE	KVA CODE	DESIGN					
40	30	1800	1780	324TC	TEFC	TFC	G	N					
PH	HZ	VOLTS	AMPS	START TYPE	DUTY	INSL	S.F.	AMB	ELEV.				
3	60/50	230/460#190/380	92/46884/42	START D RUN OR INV	CONT	F	1.15	40	3300				
F.L. EFF		94.1	3/4 LD EFF		94.5	1/2 LD EFF		94.5	GTD EFF				
F.L. PF		86.0	3/4 LD PF		82.0	1/2 LD PF		74.5	93.0				
F.L. TORQUE		LR AMPS @ 460 V		L.R. TORQUE		B.D. TORQUE		F.L. RISE (°C)					
119	LB-FT	290	225	LB-FT	189%	350	LB-FT	294%	46				
PRESSURE @ 3		POWER		ROTOR WK²		MAX. LOAD WK²		SAFE STALL TIME		STARTS/HOUR		MOTOR WGT	
57	DBA	66	DBA	6.3	LB-FT²	0	LB-FT²	20	SEC.	2	538	LB.	

*** SUPPLEMENTAL INFORMATION ***

DE BRACKET TYPE	ODE BRACKET TYPE	MOUNT TYPE	MOTOR ORIENTATION	SEVERE DUTY	HAZARDOUS LOCATION	DRIIP COVER	SCREENS	PAINT					
C-FACE	STANDARD	ROUND	HORIZONTAL	NO	NONE	NO	NONE	N - LEESON WATTS					
BEARINGS		SHAFT TYPE		SPECIAL DE		SPECIAL ODE		SHAFT MATERIAL					
DE	ODE	GREASE	T	NONE	NONE	NONE	NONE	1045 HOT ROLLED (C-204)	CAST IRON				
BALL	BALL	POLYREX EM											
6312	6312												
THERMOSTATS		WIDG RTD's		BRG RTD's		THERMISTORS		SPACE HEATERS					
TSTATS (N/C)	PROTECTORS	NOT	NONE	NONE	NONE	NONE	NONE	FALSE	NA				
R1 (ohms/ph)		R2 (ohms/ph)		X1 (ohms/ph)		X2 (ohms/ph)		Xm (ohms/ph)		VIBRATION (in/sec)		FLOAT ODE	
0	0	0	0	0	0	0	0	0	0.150				

INVERTER TORQUE: CONSTANT 10:1
INV. HP SPEED RANGE: NONE

ENCODER: NONE
BRAKE: NONE
FT-LB: NONE
VOLTAGE: NONE
UL: Y-(LEESON UL REC)

DATE: 1/30/2018

HAZ: NONE PPR



Motor Load Data

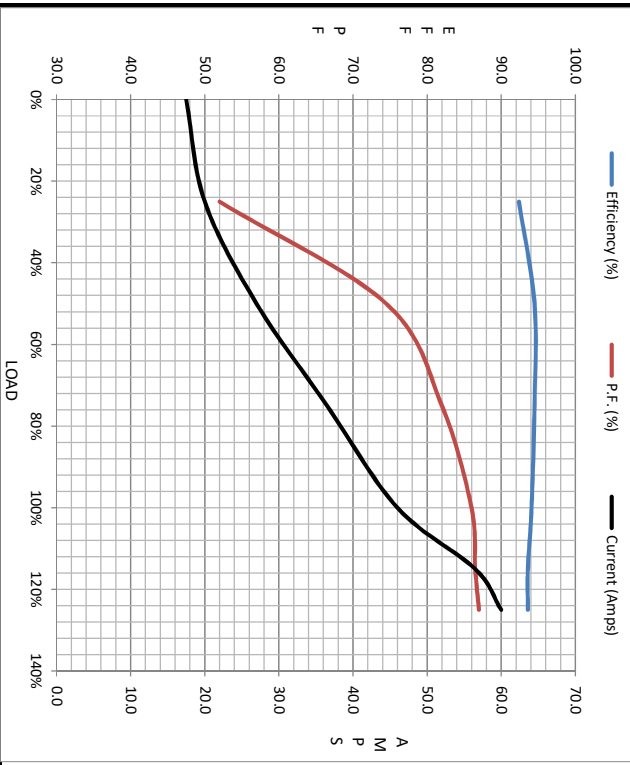
Load	0%	25%	50%	75%	100%	115%	125%	LR
Current (Amps)	17.5	20.0	27.0	36.5	46.0	56.5	60.0	290
Torque (ft-lb)	0.00	30.5	60.5	90.5	119	137	150	225
RPM	1800	1795	1790	1785	1780	1,775	1772	0
Efficiency (%)		92.4	94.5	94.5	94.1	93.6	93.6	
P.F. (%)	4.5	52.0	74.5	82.0	86.0	86.5	87.0	0.0

Motor Speed Data

	LR	Pull-Up	BD	Rated	Idle
Speed (RPM)	0	900	1625	1780	1800
Current (Amps)	290	260	190	46.0	17.5
Torque (ft-lb)	225	200	350	119	0.00

Information Block

HP	40.0			
Sync. RPM	1800			
Frame	324			
Enclosure	TEFC			
Construction	TFC			
Voltage	230/460#190/380 V			
Frequency	60 Hz			
Design	A			
LR Code letter	G			
Service Factor	1.15			
Temp Rise @ FL	46 °C			
Duty	CONT			
Ambient	40 °C			
Elevation	1,000 feet			
Rotor/Shaft wk ²	6.3 LB-Ft ²			
Ref Wdg	T16104005 NONE			
Sound Pressure @ 1M	57 dBA			
VFD Rating	CONSTANT 10:1			
Outline Dwg	SS620781			
Conn. Diag	00417201			
Additional Specifications:				
0				
EQUIV CKT (OHMS / PHASE)				
R1	R2	X1	X2	Xm
0.0000	0.0000	0.0000	0.0000	0.0000



Speed -Torque Curve

