

# PRODUCT INFORMATION PACKET



Model No: C284T17FB6C  
Catalog No: 170118.60  
25 HP 1800RPM .RIGID BASE.575 VOLT.C284T17FB6C  
575 Volts



Regal and Leeson are trademarks of Regal Beloit Corporation or one of its affiliated companies.  
©2018 Regal Beloit Corporation, All Rights Reserved. MC017097E





### Nameplate Specifications

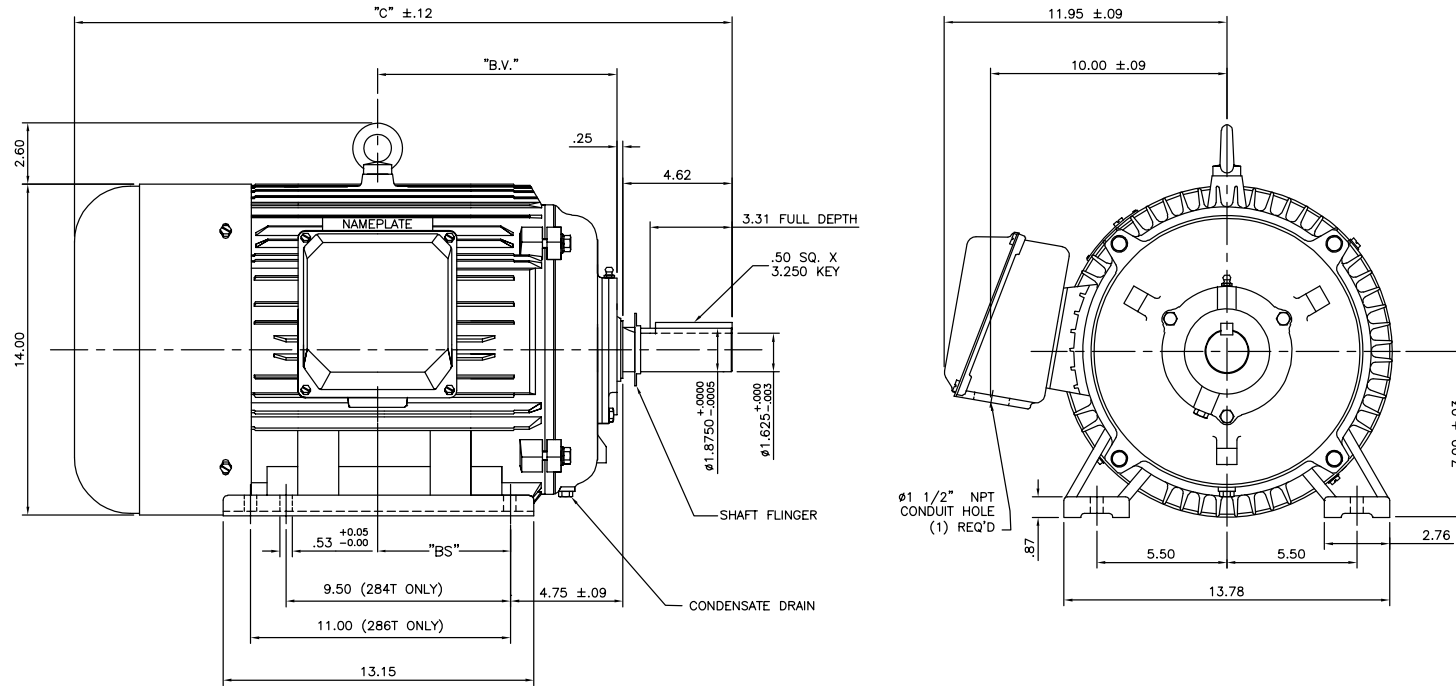
Output HP	<b>25 Hp</b>	Output KW	<b>18.7 kW</b>
Frequency	<b>60 Hz</b>	Voltage	<b>575 V</b>
Current	<b>23.6 A</b>	Speed	<b>1770 rpm</b>
Service Factor	<b>1.15</b>	Phase	<b>3</b>
Efficiency	<b>94.1 %</b>	Duty	<b>Continuous</b>
Insulation Class	<b>F</b>	Design Code	<b>B</b>
KVA Code	<b>H</b>	Frame	<b>284T</b>
Enclosure	<b>Totally Enclosed Fan Cooled</b>	Overload Protector	<b>No</b>
Ambient Temperature	<b>40 °C</b>	Drive End Bearing Size	<b>6311</b>
Opp Drive End Bearing Size	<b>6309</b>	UL	<b>Recognized</b>
CSA	<b>Y</b>	CE	<b>Y</b>
IP Code	<b>43</b>		

### Technical Specifications

Electrical Type	<b>Squirrel Cage Inverter Rated</b>	Starting Method	<b>Wye Start Delta Run Or Inverter</b>
Poles	<b>4</b>	Rotation	<b>Reversible</b>
Mounting	<b>Rigid base</b>	Motor Orientation	<b>HORIZONTAL</b>
Drive End Bearing	<b>BALL</b>	Opp Drive End Bearing	<b>BALL</b>
Frame Material	<b>Cast Iron</b>	Shaft Type	<b>T</b>
Overall Length	<b>26.26 in</b>	Shaft Diameter	<b>1.875 in</b>
Shaft Extension	<b>4.62 in</b>	Assembly/Box Mounting	<b>F1 ONLY</b>
Outline Drawing	<b>16953960-284T</b>	Connection Diagram	<b>005190.01</b>

This is an uncontrolled document once printed or downloaded and is subject to change without notice. Date Created: 10/15/2018

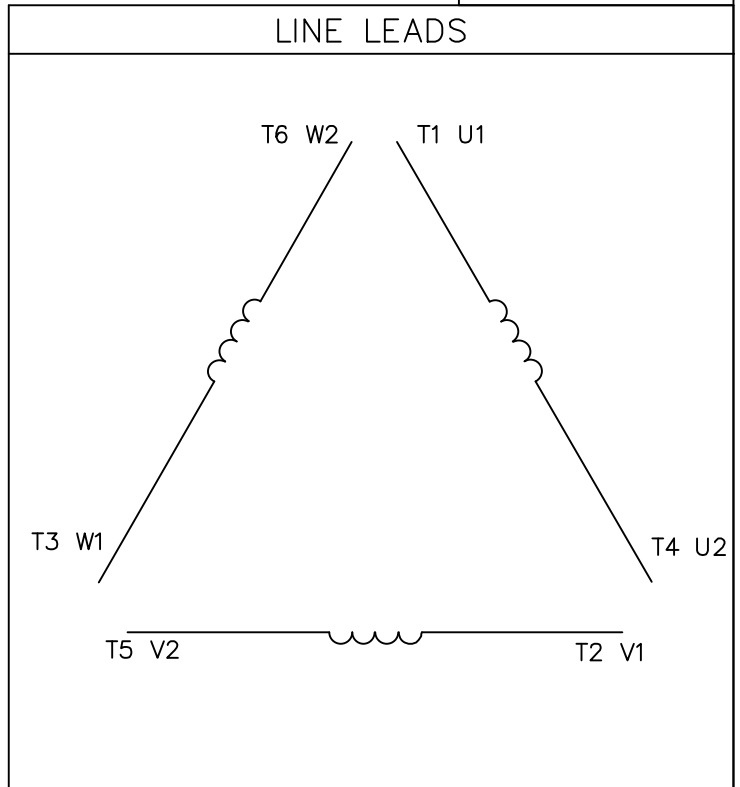
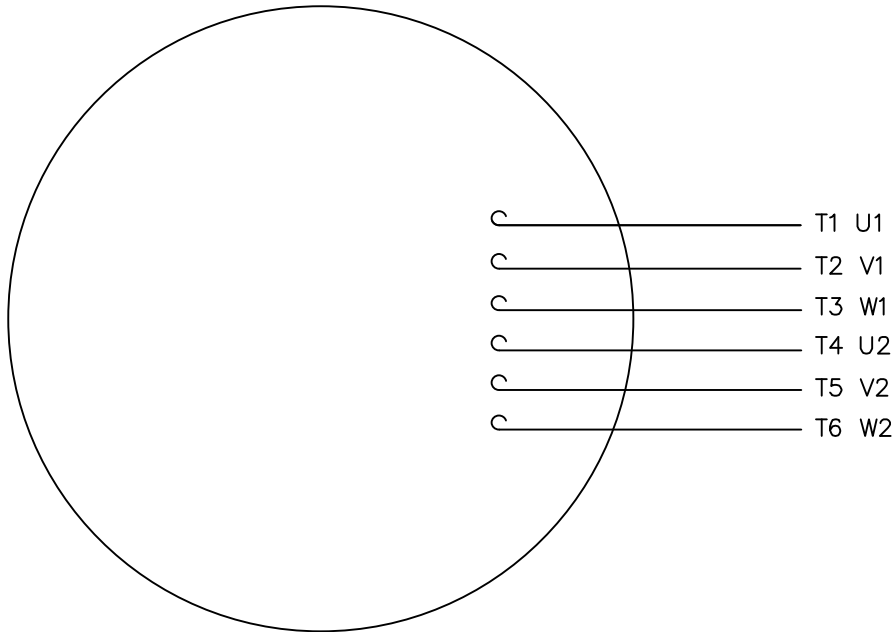
169539-60



NOTE: 286T HAS 6 MTG. HOLES, USING 284T AND 286T LOCATIONS

FRAME DESIGN	"C"	"BV"	"BS"
284T	26.26	9.65	
286T	27.83	10.43	5.51

NO.	REVISION	BY & DATE	CHK	ANG	FINISH	TOLERANCES UNLESS SPECIFIED		DRAWN	CJK 07/16/01			
						DEC.	INCHES					
						.X	±.1					
03	ECO-0048910, REVISED 'BA' DIM.	RFH 04/04/14	EH	.XX	±.03	REGAL REGAL-BELOIT CORPORATION		CHK				
02	REDRAWN TO CURRENT CAD STANDARDS	CJK 07/13/99	.JXX	±.005	TITLE OUTLINE-280T FRAME, TEFC-RIGID NEW CONDUIT BOX		APPD					
01	ADDED HOLE FOR 286T BASE	JJK 11/01/01	.JXXX	±.0005	MAT'L. CAST IRON		SCALE	N/A				
								REF				
								FMF				
								PREV				
THIS DRAWING IN DESIGN AND DETAIL IS OUR PROPERTY AND MUST NOT BE USED EXCEPT IN CONNECTION WITH OUR WORK. ALL RIGHTS OF DESIGN AND INVENTION ARE RESERVED. THIS IS AN ELECTRONICALLY GENERATED DOCUMENT - DO NOT SCALE THIS PRINT						RFP	CAD FILE	SIZE	DRAWING NO.	PAGE	OF	REV.
						DIST		A	169539-60			03



	L1	L2	L3	JOIN
START (WYE)	T1 U1	T2 V1	T3 U2	(T4,T5,T6) (U2,V2,W2)
RUN (DELTA)	(T1,T6) (U1,W2)	(T2,T4) (V1,U2)	(T3,T5) (W1,V2)	

TOLERANCES UNLESS OTHERWISE SPECIFIED

DECIMALS

**LEESON** ELECTRIC CORPORATION

NO.	REVISION	BY	DATE	FRACTIONS	±	SCALE
03	ADDED IEC DESIGNATIONS	MOL	4/27/2012	.00	± .01	DRAWN PG 05/07/82
02	REMOVED OBSOLETE STATUS	KJH	6/28/99	.000	± .005	CH'K'D. TEM
01	REDRAWN ON CAD	DBT	05/30/97	.0000	± .0005	APPR. 05/07/82

TITLE	MAT'L.
EXT. WIRING DIAGRAM STAR START - DELTA RUN	Y-CONNECTED START DELTA CONNECTED RUN - SINGLE VOLTAGE

THIS DRAWING IN DESIGN AND DETAIL IS OUR PROPERTY AND MUST NOT BE USED EXCEPT IN CONNECTION WITH OUR WORK ALL RIGHTS OF DESIGN AND INVENTION ARE RESERVED

ANGLES ± 1/2°  
INCH/MM

REF. T2E  
FMF ELECTRO POWER

FINISH

SIZE A

DRAWING NO. 005190-01

