

PRODUCT INFORMATION PACKET



Model No: C182K34NB106A

Catalog No: 132391.00

.5-7HP..3600RPM.182TZ.TEAO.230V.1PH.60HZ.CONT.50C.1.0SF.RIGID.....CROP DRYER.....

Crop Dryer



Regal and Leeson are trademarks of Regal Beloit Corporation or one of its affiliated companies.

©2018 Regal Beloit Corporation, All Rights Reserved. MC017097E



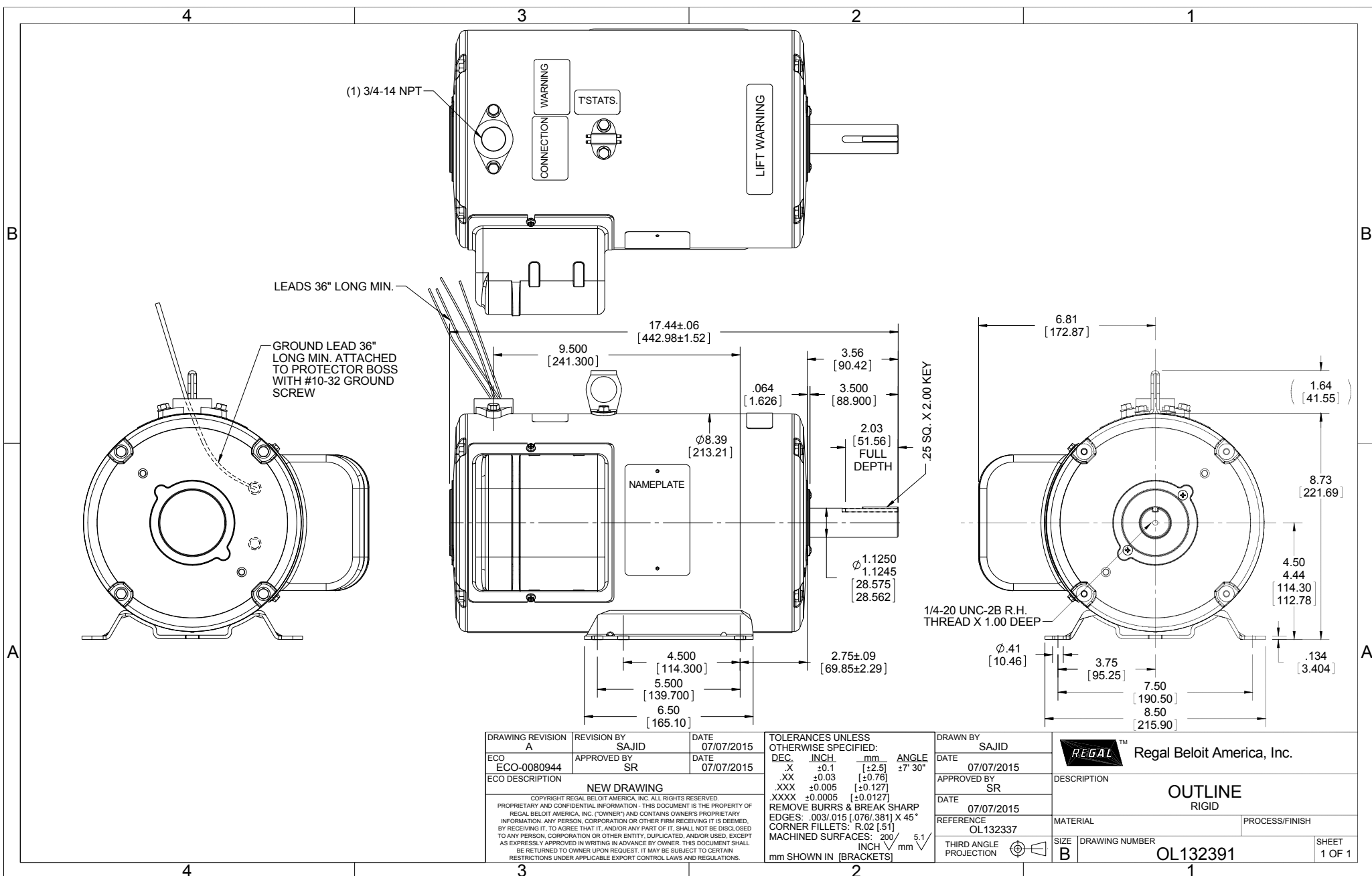


Nameplate Specifications

Output HP	5 Hp	Output KW	3.7 kW
Frequency	60 Hz	Voltage	230 V
Current	20.8 A	Speed	3450 rpm
Service Factor	1	Phase	1
Efficiency	83 %	Duty	Continuous
Insulation Class	F	Design Code	L
KVA Code	K	Frame	182TZ
Enclosure	Totally Enclosed Air Over	Overload Protector	No
Ambient Temperature	40 °C	Drive End Bearing Size	6206
Opp Drive End Bearing Size	6205	UL	Recognized
CSA	Y	CE	N
IP Code	43		

Technical Specifications

Electrical Type	Capacitor Start Capacitor Run	Starting Method	Across The Line
Poles	2	Rotation	Selective Counterclockwise
Mounting	Rigid base	Motor Orientation	HORIZONTAL
Drive End Bearing	BALL	Opp Drive End Bearing	BALL
Frame Material	Rolled Steel	Shaft Type	Single Special Extension
Overall Length	17.44 in	Frame Length	12.50 in
Shaft Diameter	1.125 in	Shaft Extension	3.5 in
Assembly/Box Mounting	F3		
Outline Drawing	OL132391	Connection Diagram	005018.30



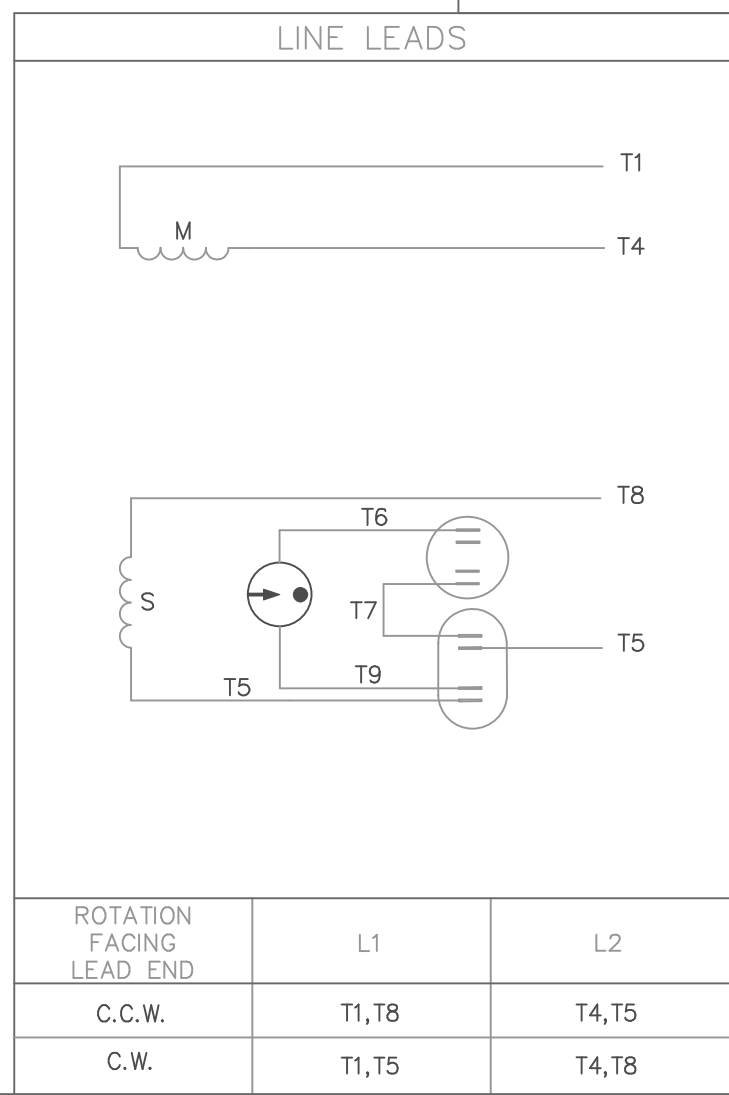
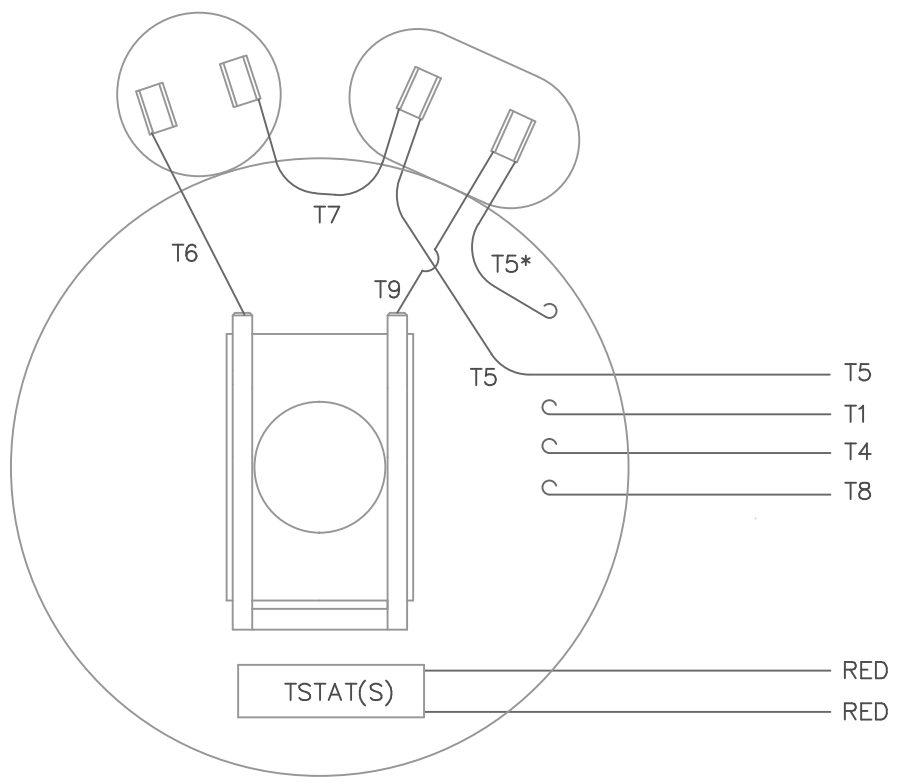
DRAWING REVISION A	REVISION BY SAJID	DATE 07/07/2015
ECO ECO-0080944	APPROVED BY SR	DATE 07/07/2015
ECO DESCRIPTION NEW DRAWING		
<small>COPYRIGHT REGAL BELOIT AMERICA, INC. ALL RIGHTS RESERVED. PROPRIETARY AND CONFIDENTIAL INFORMATION - THIS DOCUMENT IS THE PROPERTY OF REGAL BELOIT AMERICA, INC. ("OWNER") AND CONTAINS OWNER'S PROPRIETARY INFORMATION. ANY PERSON, CORPORATION OR OTHER FIRM RECEIVING IT IS DEEMED, BY RECEIVING IT, TO AGREE THAT IT, AND/OR ANY PART OF IT, SHALL NOT BE DISCLOSED TO ANY PERSON, CORPORATION OR OTHER ENTITY, DUPLICATED, AND/OR USED, EXCEPT AS EXPRESSLY APPROVED IN WRITING IN ADVANCE BY OWNER. THIS DOCUMENT SHALL BE RETURNED TO OWNER UPON REQUEST. IT MAY BE SUBJECT TO CERTAIN RESTRICTIONS UNDER APPLICABLE EXPORT CONTROL LAWS AND REGULATIONS.</small>		

TOLERANCES UNLESS OTHERWISE SPECIFIED:		
DEC.	INCH	mm
X	+0.1	[+2.5]
XX	+0.03	[+0.76]
XXX	+0.005	[+0.127]
XXXX	+0.0005	[+0.0127]
REMOVE BURRS & BREAK SHARP		
EDGES: .003/.015 [0.076/.381] X 45°		
CORNER FILLETS: R.02 [51]		
MACHINED SURFACES: 200		
mm SHOWN IN [BRACKETS]		

DRAWN BY SAJID
DATE 07/07/2015
APPROVED BY SR
DATE 07/07/2015
REFERENCE OL132337
THIRD ANGLE PROJECTION

Regal Beloit America, Inc.	
DESCRIPTION OUTLINE RIGID	
MATERIAL	PROCESS/FINISH
SIZE B	DRAWING NUMBER OL132391
SHEET 1 OF 1	

VIEW FROM OUTSIDE OF MOTOR AT SWITCH END.



ROTATION FACING LEAD END	L1	L2
C.C.W.	T1, T8	T4, T5
C.W.	T1, T5	T4, T8

* THIS LEAD MAY BE WHITE

				TOLERANCES UNLESS OTHERWISE SPECIFIED		LEESON ELECTRIC CORPORATION	
				DECIMALS			
				.00	± .01	DRAWN MDN 10/13/98	TITLE
				.000	± .005	CH'K'D.	EXTERNAL WIRING DIAGRAM TYPE "K" W/O PROTECTOR
01	ADDED "THIS LEAD MAY BE WHITE" NOTE	BJB	09/15/04	.0000	± .0005	APPR.	MAT'L.
NO.	REVISION	BY	DATE	FRACTIONS	± 1/64	SCALE 1=1	DECAL - 004018 TSTAT - 080582
THIS DRAWING IN DESIGN AND DETAIL IS OUR PROPERTY AND MUST NOT BE USED EXCEPT IN CONNECTION WITH OUR WORK ALL RIGHTS OF DESIGN AND INVENTION ARE RESERVED				ANGLES	± 1/2"	REF.	FINISH
				INCH/MM		FMF	SIZE A



LEESON ELECTRIC CORPORATION
 TYPICAL PERFORMANCE CURVE for AC MOTOR

Model No 132391.00

Catalog No 132391.00

Curve at 230
60
5

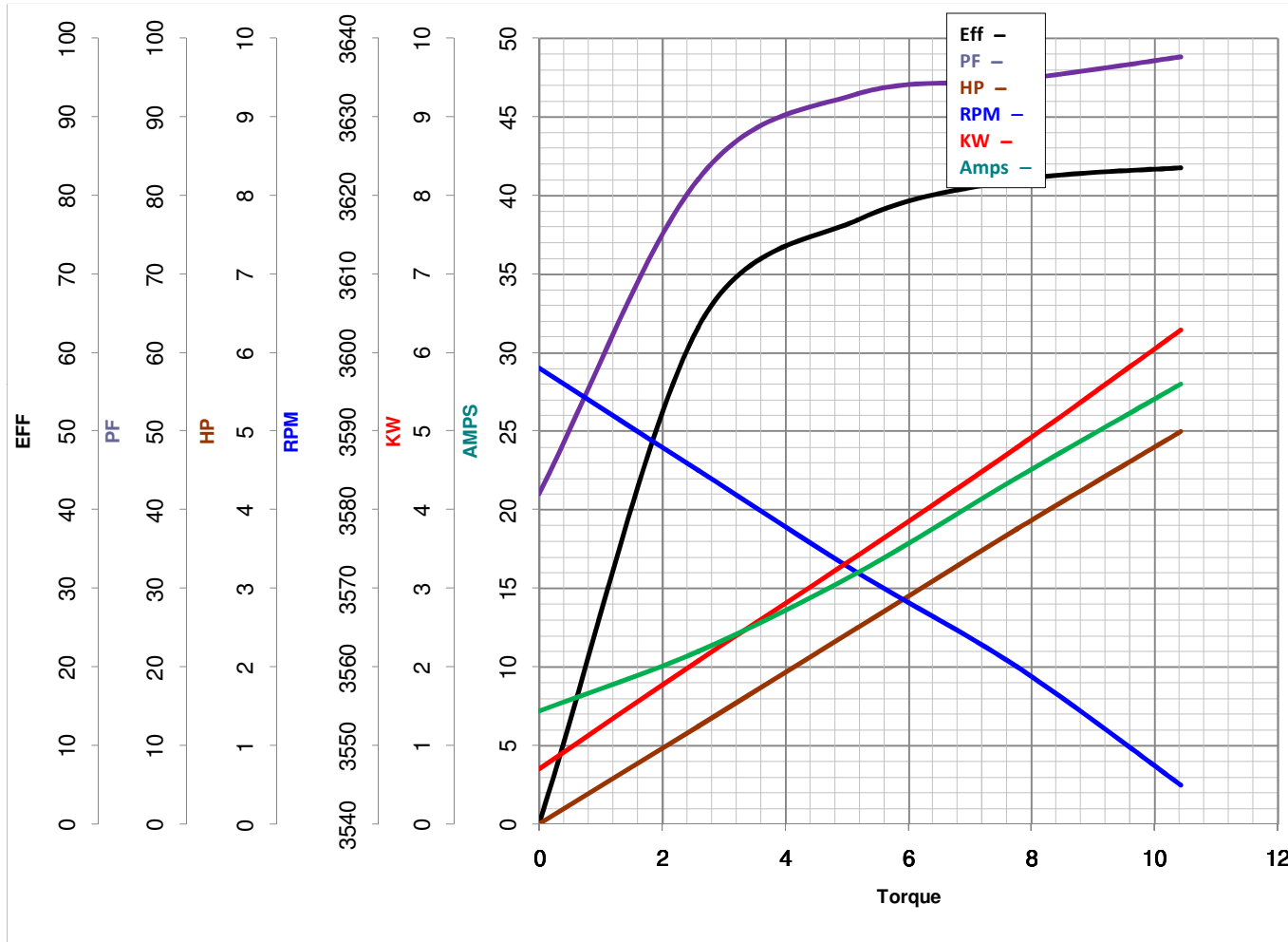
Volts
 HZ
 HP

HP 5&7
 VOLTS 230&230

PHASE 1

HZ 60&60

RPM 3450&3450



Torque in lb-Ft

FL TORQUE 10.42 lb-Ft
 BD TORQUE 30.0 lb-Ft
 LR TORQUE 28 lb-Ft

FL AMPS 20.82
 PU TORQUE 27.0 lb-Ft
 LR AMPS 239

WINDING K8243-2

Date 4/10/2018