

PRODUCT INFORMATION PACKET



Model No: C184C14DB2A

Catalog No: 131554.00

3HP.2.2kW.1440RPM.184.IP22./220V.1PH.50HZ.CONT.NOT.40C.1.15SF.RIGID.50 HERTZ.C184C14DB2A
50 Hz



Regal and Leeson are trademarks of Regal Beloit Corporation or one of its affiliated companies.

©2018 Regal Beloit Corporation, All Rights Reserved. MC017097E



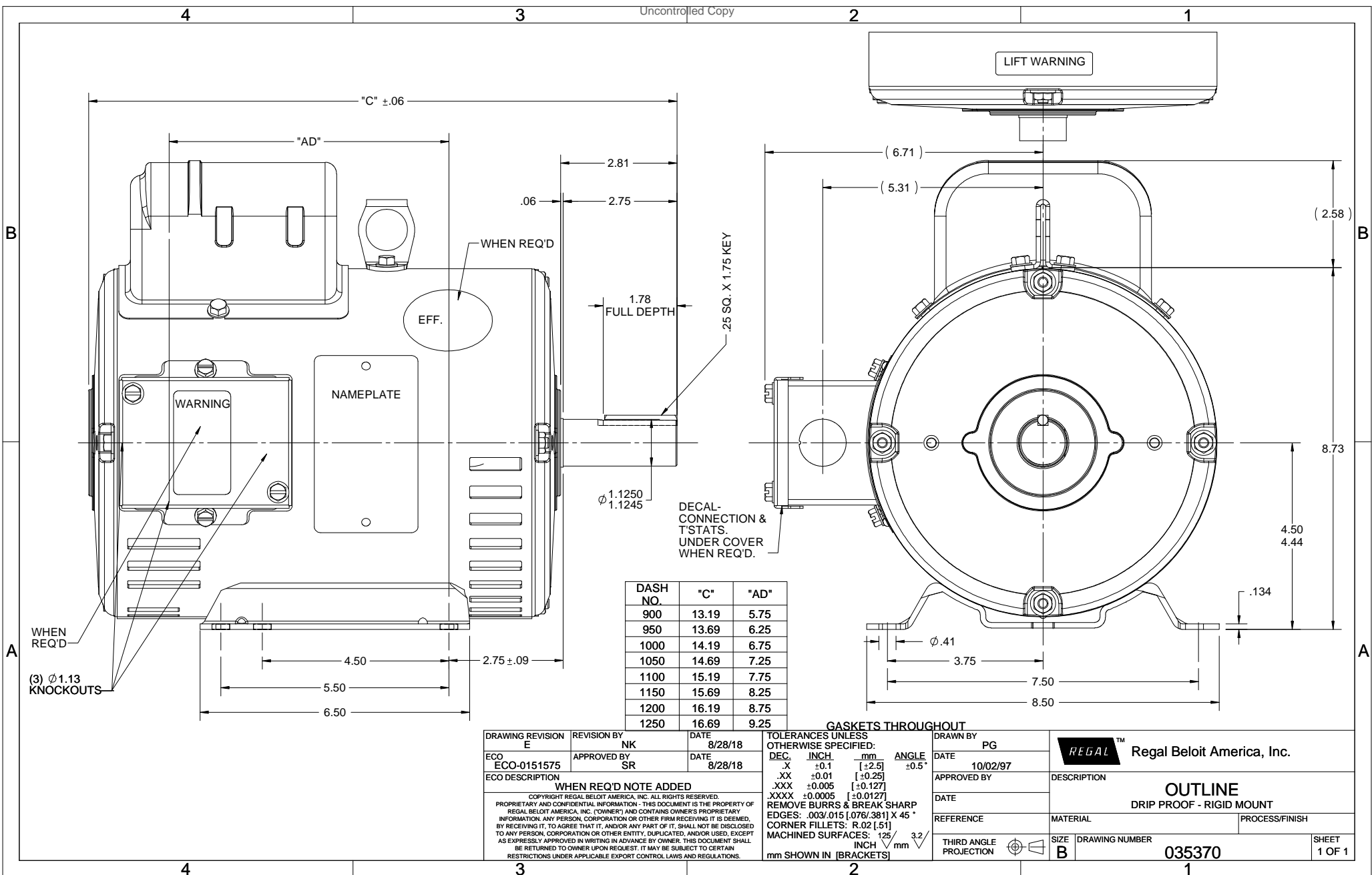


Nameplate Specifications

Output HP	3 Hp	Output KW	2.2 kW
Frequency	50 Hz	Voltage	220 V
Current	16.8 A	Speed	1440 rpm
Service Factor	1.15	Phase	1
Efficiency	76 %	Duty	Continuous
Insulation Class	F	Design Code	NO DESIGN CODE
KVA Code	H	Frame	184T
Enclosure	Drip Proof	Overload Protector	No
Ambient Temperature	40 °C	Drive End Bearing Size	6206
Opp Drive End Bearing Size	6205	UL	Recognized
CSA	Y	CE	N
IP Code	22		

Technical Specifications

Electrical Type	Capacitor Start Induction Run	Starting Method	Across The Line
Poles	4	Rotation	Selective Counterclockwise
Mounting	Rigid base	Motor Orientation	HORIZONTAL
Drive End Bearing	BALL	Opp Drive End Bearing	BALL
Frame Material	Rolled Steel	Shaft Type	T
Overall Length	14.69 in	Frame Length	10.50 in
Shaft Diameter	1.125 in	Shaft Extension	2.75 in
Assembly/Box Mounting	F1 ONLY		
Outline Drawing	035370-1050	Connection Diagram	005403.01



"C" ±.06

"AD"

WHEN REQ'D

EFF.

NAMEPLATE

WARNING

DECAL-CONNECTION & T'STATS. UNDER COVER WHEN REQ'D.

LIFT WARNING

WHEN REQ'D

(3) Ø1.13 KNOCKOUTS

DASH NO.	"C"	"AD"
900	13.19	5.75
950	13.69	6.25
1000	14.19	6.75
1050	14.69	7.25
1100	15.19	7.75
1150	15.69	8.25
1200	16.19	8.75
1250	16.69	9.25

GASKETS THROUGHOUT

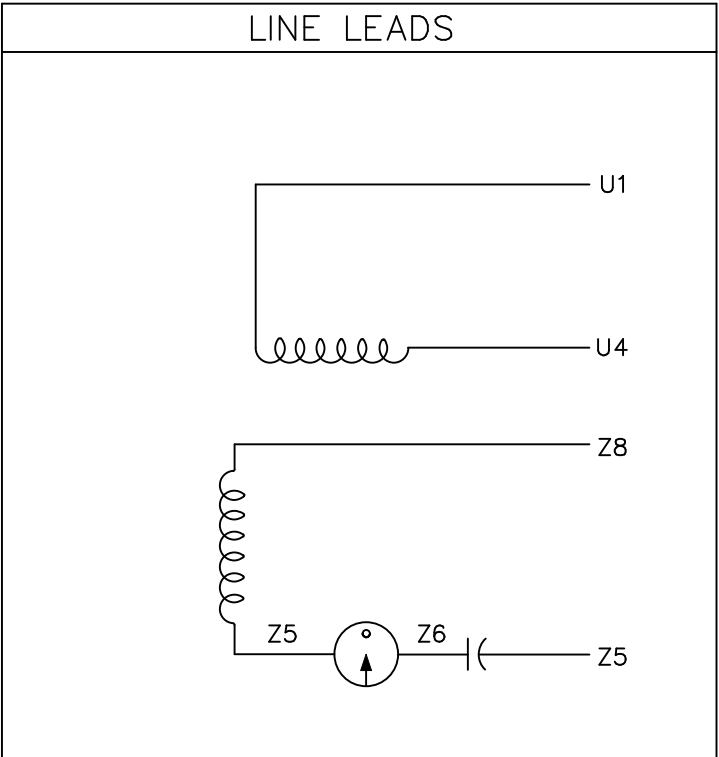
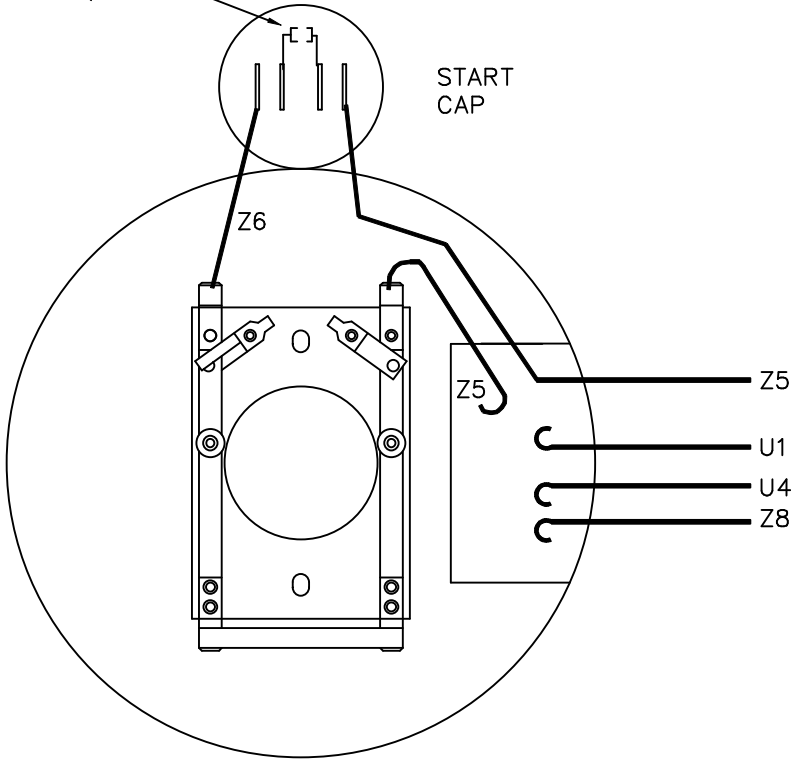
DRAWING REVISION E	REVISION BY NK	DATE 8/28/18
ECO ECO-0151575	APPROVED BY SR	DATE 8/28/18
ECO DESCRIPTION WHEN REQ'D NOTE ADDED		
<small>COPYRIGHT REGAL BELOIT AMERICA, INC. ALL RIGHTS RESERVED. PROPRIETARY AND CONFIDENTIAL INFORMATION - THIS DOCUMENT IS THE PROPERTY OF REGAL BELOIT AMERICA, INC. ("OWNER") AND CONTAINS OWNER'S PROPRIETARY INFORMATION. ANY PERSON, CORPORATION OR OTHER FIRM RECEIVING IT IS DEEMED, BY RECEIVING IT, TO AGREE THAT IT, AND/OR ANY PART OF IT, SHALL NOT BE DISCLOSED TO ANY PERSON, CORPORATION OR OTHER ENTITY, DUPLICATED, AND/OR USED, EXCEPT AS EXPRESSLY APPROVED IN WRITING IN ADVANCE BY OWNER. THIS DOCUMENT SHALL BE RETURNED TO OWNER UPON REQUEST. IT MAY BE SUBJECT TO CERTAIN RESTRICTIONS UNDER APPLICABLE EXPORT CONTROL LAWS AND REGULATIONS.</small>		

TOLERANCES UNLESS OTHERWISE SPECIFIED:			
DEC.	INCH	mm	ANGLE
.X	±0.1	[±2.5]	±0.5°
.XX	±0.01	[±0.25]	
.XXX	±0.005	[±0.127]	
.XXXX	±0.0005	[±0.0127]	
REMOVE BURRS & BREAK SHARP			
EDGES: .003/.015 [0.076/.381] X 45°			
CORNER FILLETS: R.02 [51]			
MACHINED SURFACES: 125 3.2			
mm SHOWN IN [BRACKETS]			

DRAWN BY PG	DATE 10/02/97
APPROVED BY	DATE
REFERENCE	THIRD ANGLE PROJECTION

Regal Beloit America, Inc.	
DESCRIPTION OUTLINE DRIP PROOF - RIGID MOUNT	
MATERIAL	PROCESS/FINISH
SIZE B	DRAWING NUMBER 035370
SHEET 1 OF 1	

RESISTOR WHEN REQUIRED



ROTATION FACING LEAD END	L1	L2
C.C.W. ROT.	U1, Z8	U4, Z5
C.W. ROT.	U1, Z5	U4, Z8

VIEW FROM OUTSIDE OF MOTOR AT SWITCH END. TYPE "C" W/O PROT. REF. DECAL 080670

				TOLERANCES UNLESS OTHERWISE SPECIFIED		LEESON ELECTRIC CORPORATION			
				DECIMALS					
				.00	± .01	DRAWN TMZ 04/14/97	TITLE EXTERNAL WIRING DIAGRAM TYPE "C" W/O PROTECTOR		
				.000	± .005	CH'K'D.			
				.0000	± .0005	APPR.	MAT'L.		
NO.	REVISION	BY	DATE	FRACTIONS	± 1/64	SCALE 1=2			
THIS DRAWING IN DESIGN AND DETAIL IS OUR PROPERTY AND MUST NOT BE USED EXCEPT IN CONNECTION WITH OUR WORK ALL RIGHTS OF DESIGN AND INVENTION ARE RESERVED				ANGLES	± 1/2°	REF. 5033-01	FINISH	SIZE	DRAWING NO.
				INCH/MM		FMF 121326	BABSON	A	005403-01

