

# PRODUCT INFORMATION PACKET



Model No: C145T14FC6D  
Catalog No: 121275.00  
1.5HP.1.1kW.1440RPM.145.IP54.220/380V.3PH.50HZ.CONT.NOT.40C.1.15SF.C FACE.50  
HZ.C145T14FC6D  
50 Hz



Regal and Leeson are trademarks of Regal Beloit Corporation or one of its affiliated companies.

©2018 Regal Beloit Corporation, All Rights Reserved. MC017097E



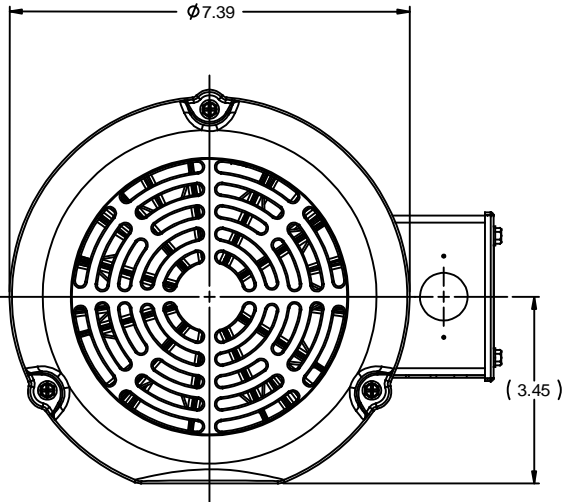
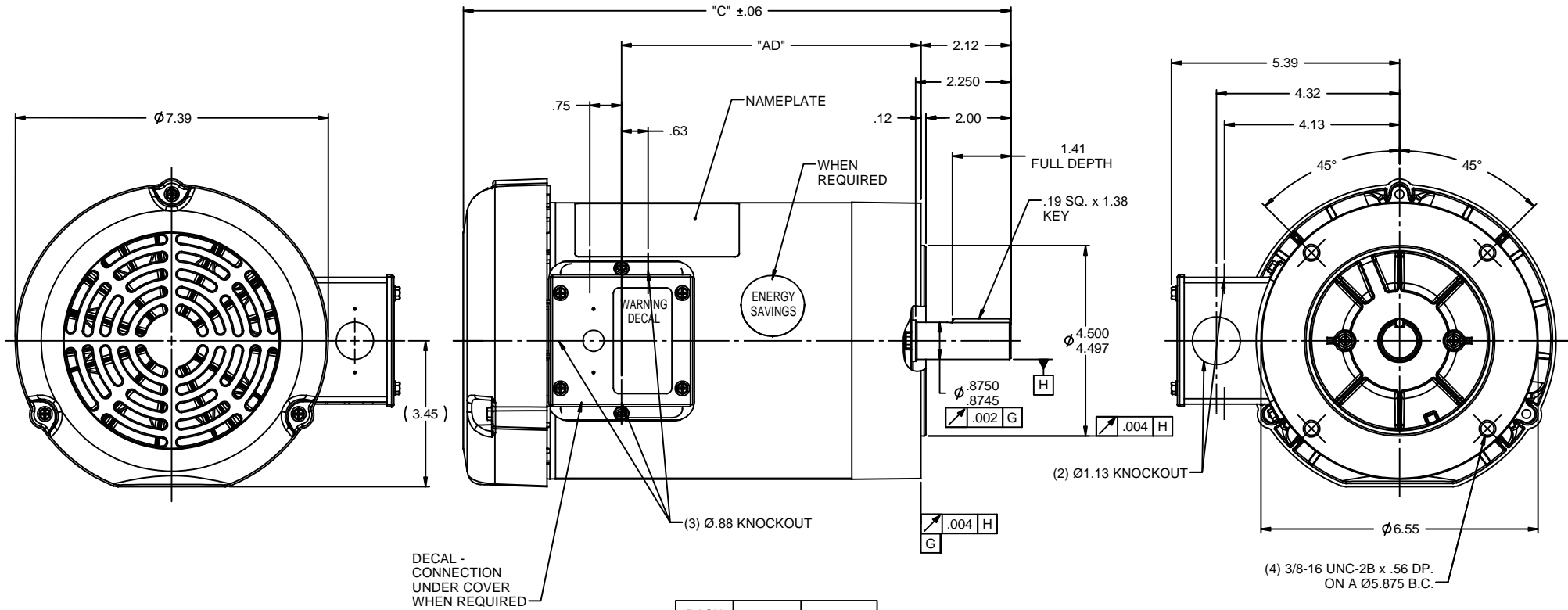


### Nameplate Specifications

Output HP	1.50 Hp	Output KW	1.1 kW
Frequency	50 Hz	Voltage	220/380/440 V
Current	5.8/3.3/2.9 A	Speed	1440 rpm
Service Factor	1.15	Phase	3
Efficiency	75.5 %	Duty	Continuous
Insulation Class	F	Design Code	NO DESIGN CODE
KVA Code	K	Frame	145TC
Enclosure	Totally Enclosed Fan Cooled	Overload Protector	No
Ambient Temperature	40 °C	Drive End Bearing Size	6205
Opp Drive End Bearing Size	6203	UL	Recognized
CSA	Y	CE	Y
IP Code	54		

### Technical Specifications

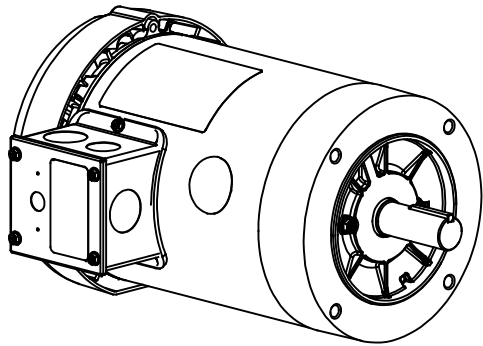
Electrical Type	Squirrel Cage Induction Run	Starting Method	Across The Line
Poles	4	Rotation	Reversible
Mounting	Round	Motor Orientation	HORIZONTAL
Drive End Bearing	BALL	Opp Drive End Bearing	BALL
Frame Material	Rolled Steel	Shaft Type	T
Overall Length	12.42 in	Frame Length	6.50 in
Shaft Diameter	0.875 in	Shaft Extension	2.25 in
Assembly/Box Mounting	F1 ONLY		
Outline Drawing	028777-650	Connection Diagram	005381.01



DECAL - CONNECTION UNDER COVER WHEN REQUIRED

DASH NO.	"C"	"AD"
550	11.42	5.56
600	11.92	6.06
650	12.42	6.56
675	12.67	6.81
700	12.92	7.06
750	13.42	7.56
800	13.92	8.06

NOTE:  
1) GASKETS THROUGHOUT

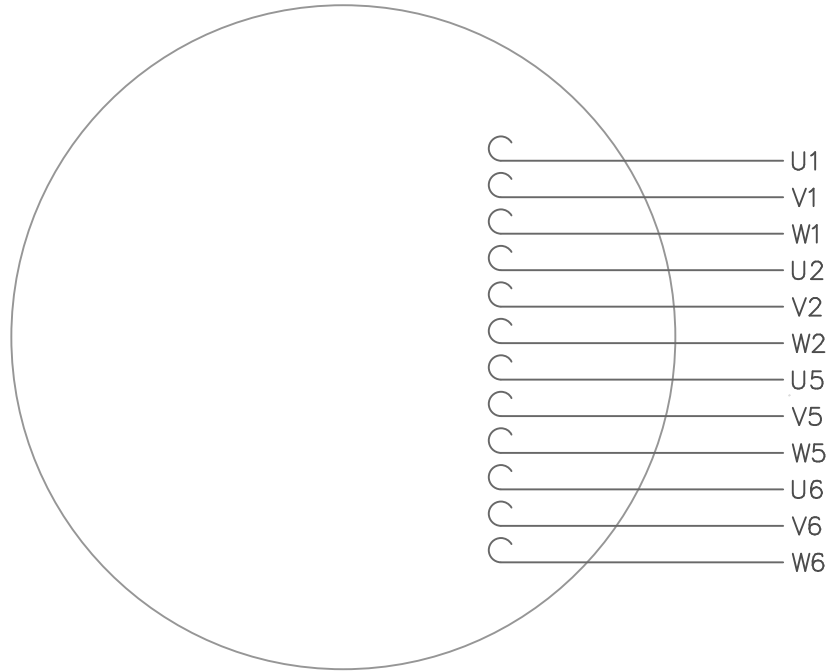


REVISION			BY & DATE	CHK	ANG	±1/2°	FINISH	GENERAL PURPOSE	SIZE	DRAWING NO	REV	
05	ADDED FAN GUARD DIMENSIONS PER SALES	PG	1/5/2011	DEC					B	028777	05	
04	ADDED DASH NO. 675	PG	5/21/2010	X								
03	ADDED ENERGY SAVINGS DECAL	PG	5/19/2010	.XX								
02	ADD "C" DIM. PER ISAAC 09-4157	LST	10/1/2009	.XXX								
01	REVISED GD&T POSITIONING & CALLOUT	KMM	8/27/07	.XXX								
TOLERANCES UNLESS SPECIFIED				INCHES		TITLE		OUTLINE - 140TC FRAME		DRAWN		KMM 08/02/07
TOLERANCES UNLESS SPECIFIED				INCHES		TITLE		TEFC - "C" FACE		CHK		
TOLERANCES UNLESS SPECIFIED				INCHES		TITLE		FINISH GENERAL PURPOSE		APPR		
TOLERANCES UNLESS SPECIFIED				INCHES		TITLE		SCALE		7:16		
TOLERANCES UNLESS SPECIFIED				INCHES		TITLE		REF		028504.00		
TOLERANCES UNLESS SPECIFIED				INCHES		TITLE		FMF		120038.00		
TOLERANCES UNLESS SPECIFIED				INCHES		TITLE		PAGE		OF		
TOLERANCES UNLESS SPECIFIED				INCHES		TITLE		NETWORK FILE NAME		028777		

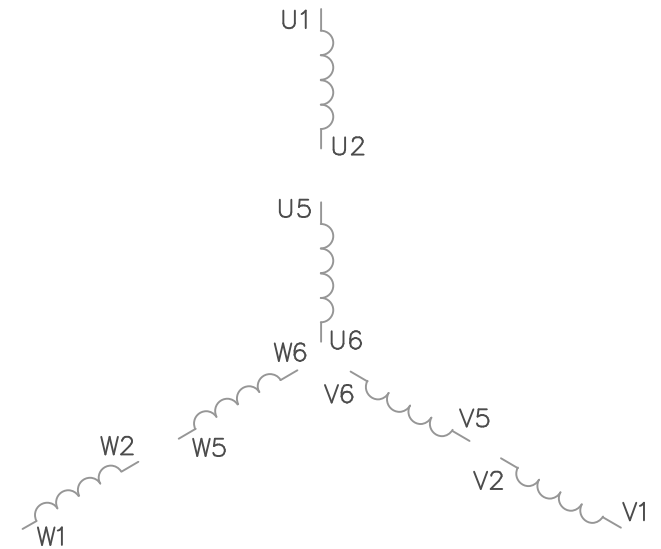


ELECTRIC MOTORS  
GEARMOTORS  
AND DRIVES

VIEW FROM OUTSIDE OF MOTOR AT SWITCH END.



LINE LEADS



VOLTAGE	L1	L2	L3	JOIN
(2Δ) LOW	U1,W2 U5,W6	V1,U2 V5,U6	W1,V2 W5,V6	----
(2Y) MEDIUM	U1,U5	V1,V5	W1,W5	(U2,V2,W2) (U6,V6,W6)
(1Δ) HIGH	U1,W6	V1,U6	W1,V6	(U2,U5) (V2,V5) (W2,W5)

TOLERANCES UNLESS OTHERWISE SPECIFIED

DECIMALS

.00 ± .01

.000 ± .005

.0000 ± .0005

FRACTIONS ± 1/64

ANGLES ± 1/2°

INCH/MM

**LEESON** ELECTRIC CORPORATION

DRAWN GWS 2/23/96

CH'K'D.

APPR.

SCALE 1=1

REF. 005352 PG 3

FMF

TITLE

MAT'L.

FINISH

EXT. WIRING DIAGRAM  
TYPE "T" W/O PROTECTOR

DECAL - 080590

STOCK

SIZE

A

DRAWING NO.

005381-01

1	REDRAWN TO CURRENT STANDARDS	DBT	05/30/97
NO.	REVISION	BY	DATE

THIS DRAWING IN DESIGN AND DETAIL IS OUR PROPERTY AND MUST NOT BE USED EXCEPT IN CONNECTION WITH OUR WORK. ALL RIGHTS OF DESIGN AND INVENTION ARE RESERVED.

Data Sheet

Date: 1/30/2018

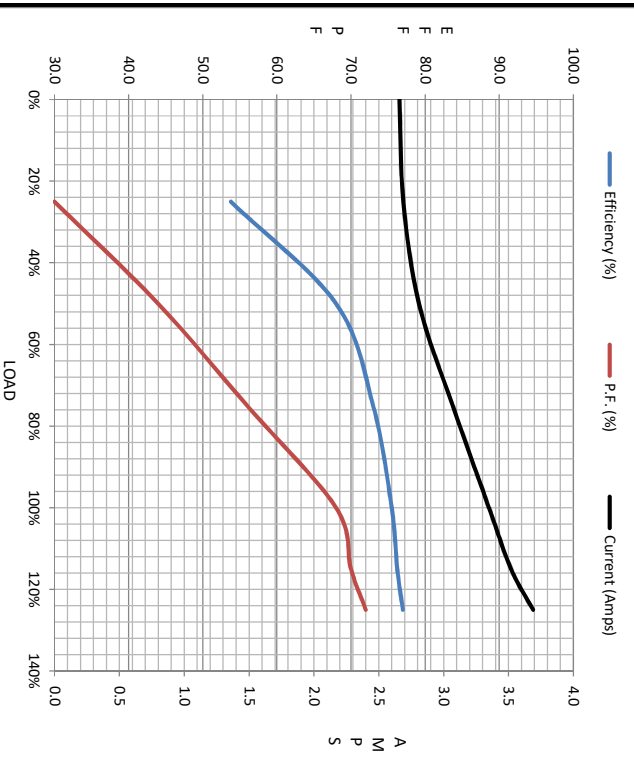
121275.00



Data @ 380 V

Motor Load Data									
Load	0%	25%	50%	75%	100%	115%	125%	LR	
Current (Amps)	2.66	2.69	2.81	3.1	3.4	3.5	3.7	20.5	
Torque (ft-lb)	0.00	1.35	2.70	4.1	5.4	6.1	6.8	20.7	
RPM	1500	1466	1451	1438	1423	1417	1407	0	
Efficiency (%)		53.8	68.0	73.0	75.5	76.3	77.0		
P.F. (%)	0.0	30.0	44.0	56.0	68.0	70.0	72.0	0.0	

Motor Speed Data						Information Block																										
LR	Pull-Up	BD	Rated	Idle		HP	Sync. RPM	Frame	Enclosure	Construction	Voltage	Frequency	Design	LR Code letter	Service Factor	Temp Rise @ FL	Duty	Ambient	Elevation	Rotor/Shaft wk <sup>2</sup>	Ref Wdg	Sound Pressure @ 1M	VFD Rating	Outline Dwg	Conn. Diag	Additional Specifications:	R1	R2	X1	X2	Xm	
0	750	1380	1423	1500		1.5	1500	140	IP54	NA	220/380	50	B	K	1.15	85	CONT	40	1,000	0.11	FR	0	NONE	028777-650	005381.01		0.0000	0.0000	0.0000	0.0000	0.0000	
20.5	18.9	12.3	3.4	2.66																												
20.7	20.8	23.8	5.4	0.00																												



LR	Pull-Up	BD	Rated	Idle
0	750	1380	1423	1500
20.5	18.9	12.3	3.4	2.66
20.7	20.8	23.8	5.4	0.00

