

PRODUCT INFORMATION PACKET



Model No: C143T11FK2 F

Catalog No: 120485.00

..3/4HP..1140RPM.143TC.TEFC.208-230/460V.3PH.60HZ.CONT.40C.1.15SF.RIGID
C.C143T11FK2F.....GENERAL PURPOSE.NOT.....

Totally Enclosed Fan Cooled (TEFC)



Regal and Leeson are trademarks of Regal Beloit Corporation or one of its affiliated companies.

©2018 Regal Beloit Corporation, All Rights Reserved. MC017097E



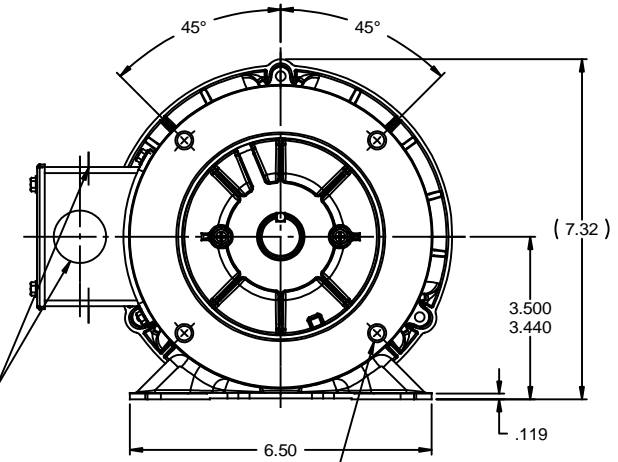
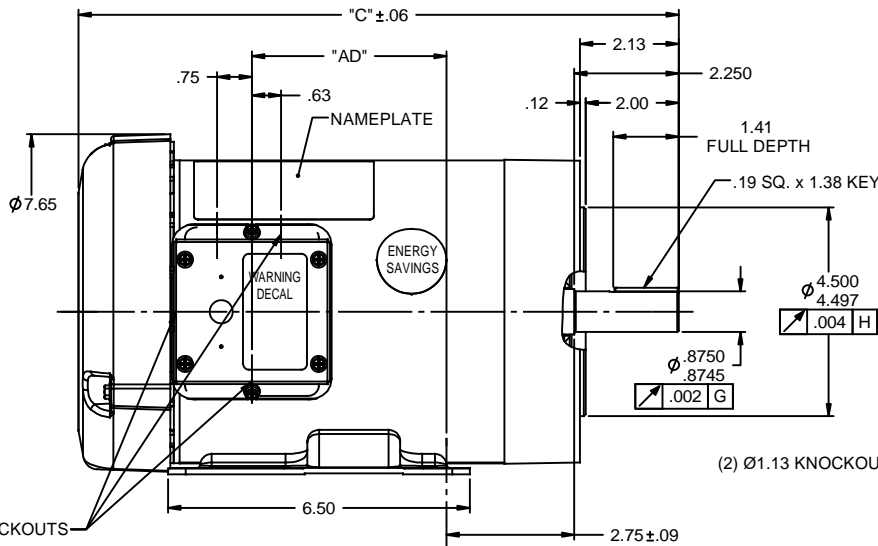
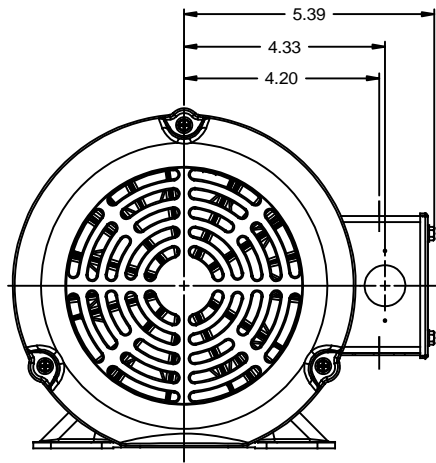


Nameplate Specifications

Output HP	0.75 Hp	Output KW	0.56 kW
Frequency	60 Hz	Voltage	208-230/460 V
Current	3.0/1.5 A	Speed	1140 rpm
Service Factor	1.15	Phase	3
Efficiency	75.5 %	Duty	Continuous
Insulation Class	B	Design Code	B
KVA Code	J	Frame	143TC
Enclosure	Totally Enclosed Fan Cooled	Overload Protector	No
Ambient Temperature	40 °C	Drive End Bearing Size	6205
Opp Drive End Bearing Size	6203	UL	Recognized
CSA	Y	CE	N
IP Code	43		

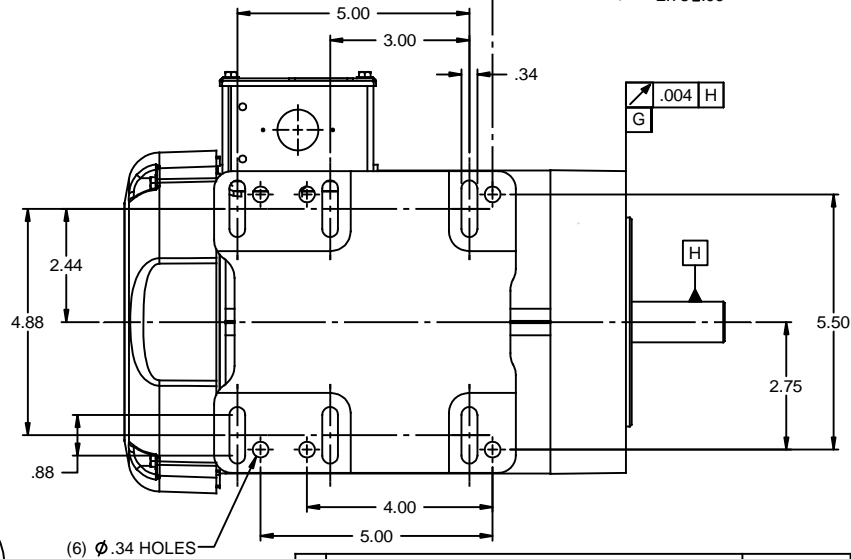
Technical Specifications

Electrical Type	Squirrel Cage Induction Run	Starting Method	Across The Line
Poles	6	Rotation	Reversible
Mounting	Rigid base	Motor Orientation	HORIZONTAL
Drive End Bearing	BALL	Opp Drive End Bearing	BALL
Frame Material	Rolled Steel	Shaft Type	T
Overall Length	12.92 in	Frame Length	7.00 in
Shaft Diameter	0.875 in	Shaft Extension	2.25 in
Assembly/Box Mounting	F1 ONLY		
Outline Drawing	028911-700	Connection Diagram	005010.01



(3) Ø.88 KNOCKOUTS

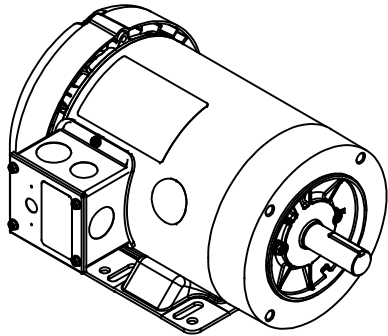
(4) 3/8-16 UNC-2B x .56 DP.
ON A Ø5.875 B.C.



(6) Ø.34 HOLES

NOTE:
1) GASKETS THROUGHOUT

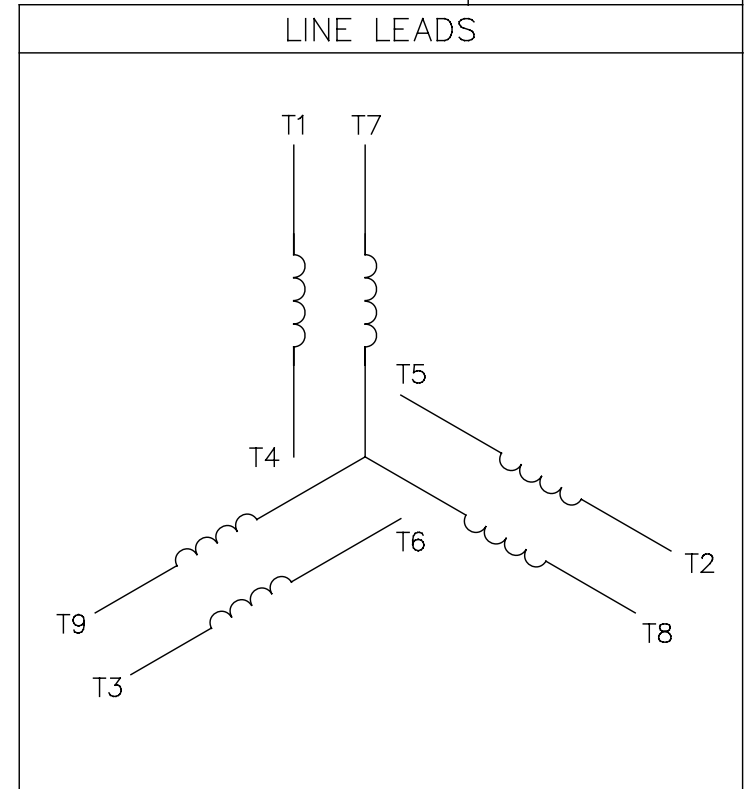
DASH NO.	"C"	"AD"
600	11.92	3.19
650	12.42	3.69
700	12.92	4.19
750	13.42	4.69
800	13.92	5.19



TOLERANCES UNLESS SPECIFIED		LEESON ELECTRIC MOTORS GERMOTORS AND DRIVES		DRAWN GRB 12/05/08	
DEC	INCHES			CHK DJ 12/05/08	
x	±.1			APPR DJ 12/05/08	
.xx	±.03	TITLE OUTLINE - 140TC/56HCZ FRAME		SCALE 3:8	
.xxx	±.005	TEFC - RIGID "C" FACE		REF 028566	
.xxx	±.0005	MAT'L		FMF 120485.00	
01	ADDED BOTTOM VIEW	PG	5/19/2010	PAGE 1 OF 1	
REVISION		BY & DATE		FINISH GENERAL PURPOSE	
THIRD ANGLE PROJECTION		CHK	ANG ±1/2°	RFP 12/05/08	
		PREV		SIZE	DRAWING NO
		NETWORK FILE NAME 028911		B	028911
				REV 01	

005010-01

VIEW FROM OUTSIDE OF MOTOR AT SWITCH END.



VOLTAGE	L1	L2	L3	JOIN & INSULATE
HIGH	T1	T2	T3	(T4,T7) (T5,T8) (T6,T9)
LOW	T1,T7	T2,T8	T3,T9	T4,T5,T6

		TOLERANCES UNLESS SPECIFIED		Regal Beloit America, Inc.		DRAWN RDW 04/12/02		
		DEC.	INCHES			CHK		
		.X	±.1	TITLE EXTERNAL WIRING DIAGRAM 3 PHASE W/O PROTECTOR		APPD		
		.XX	±.01			SCALE 1=1		
		.XXX	±.005			REF FIG.2-51		
A	UPDATED TO REGAL LOGO	SAJ 06/26/15	AJY .XXXX ±.0005	MAT'L. DECAL - 004014		FMF		
NO.	REVISION	BY & DATE	CHK ANG ±1/2"	FINISH		PREV		
THIS DRAWING IN DESIGN AND DETAIL IS OUR PROPERTY AND MUST NOT BE USED EXCEPT IN CONNECTION WITH OUR WORK ALL RIGHTS OF DESIGN AND INVENTION ARE RESERVED THIS IS AN ELECTRONICALLY GENERATED DOCUMENT - DO NOT SCALE THIS PRINT			RFP 04/12/02	CAD FILE 00501001		SIZE A	DRAWING NO. 005010-01	REV. A
			DIST BRF-NLV					



P.O. BOX 8003
WAUSAU, WI 54401-8003
PH. 715-675-3311

DATA VOLTS: 460

CERTIFICATION DATA SHEET

CONN. DIAGRAM: 005010.01
OUTLINE: 028911-700
WINDING: T63642

CAT #: 120485.00

FR 3

TYPICAL MOTOR PERFORMANCE DATA

HP	KW	SYNC RPM	FL RPM	FRAME	ENCLOSURE	TYPE	KVA CODE	DESIGN	
0.75	0.56	1200	1155	143TC	TEFC	NA	J	B	
PH	HZ	VOLTS	AMPS	START TYPE	DUTY	INSL	S.F.	AMB	ELEV.
3	60	208-230/460	3.05/1.5	ACROSS THE LINE	CONT	B	1.15	40	3300
F.L. EFF		75.5	3/4 LD EFF	74.0	1/2 LD EFF	70.4	GTD EFF	ELECT. TYPE	
F.L. PF		62.0	3/4 LD PF	50.0	1/2 LD PF	39.2	0.0	SQ CAGE IND RUN	
F.L. TORQUE		LR AMPS @ 460 V		L.R. TORQUE		B.D. TORQUE		F.L. RISE (°C)	
3.4 LB-FT		7.2		7.8 LB-FT 229%		10.5 LB-FT		309% 66	
PRESSURE @ 3		POWER	ROTOR WK²	MAX. LOAD WK²	SAFE STALL TIME	STARTS/HOUR	MOTOR WGT		
999 DBA		1008 DBA	0.09 LB-FT²	0.1 LB-FT²	0 SEC.	0	0 LB.		

*** SUPPLEMENTAL INFORMATION ***

DE BRACKET TYPE	ODE BRACKET TYPE	MOUNT TYPE	MOTOR ORIENTATION	SEVERE DUTY	HAZARDOUS LOCATION	DRIIP COVER	SCREENS	PAINT
C-FACE	STANDARD	RIGID	HORIZONTAL	NO	NONE	NO	NONE	JE-LEESON/ENAM
BEARINGS	GREASE	SHAFT TYPE	SPECIAL DE	SPECIAL ODE	SHAFT	MATERIAL	FRAME MATERIAL	
DE ODE								
BALL BALL	POLYREX EM	T	NONE	NONE	1144 STRESSPROOF (C-223)		ROLLED STEEL	
6205	6203							

THERMOSTATS	PROTECTORS	WDG RTD's	BRG RTD's	THERMISTORS	CONTROL	SPACE HEATERS
NONE	NOT	NONE	NONE	NONE	FALSE	NA
R1 (ohms/ph)	R2 (ohms/ph)	X1 (ohms/ph)	X2 (ohms/ph)	Xm (ohms/ph)	VIBRATION (in/sec)	FLOAT
0	0	0	0	0	0.080	ODE

* N O T E S *		INVERTER TORQUE: NONE	
		INV. HP SPEED RANGE: NONE	
		ENCODER: NONE	
		NONE	
		BRAKE: NONE	
		NONE	
		FT-LB: NA	NONE
		VOLTAGE: NONE	
		UL: Y-(LEESON UL REC)	

DATE:	1/24/2018	HZ:	
-------	-----------	-----	--



Motor Load Data

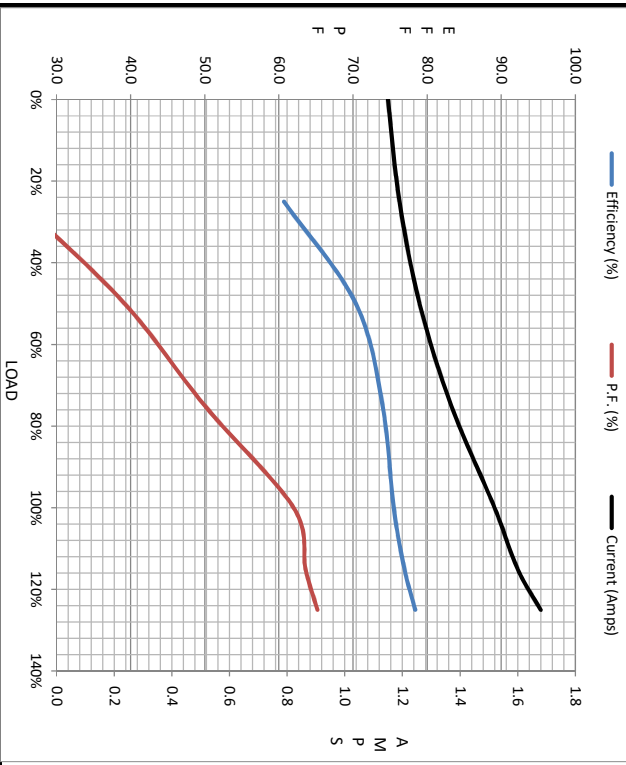
Load	0%	25%	50%	75%	100%	115%	125%	LR
Current (Amps)	1.15	1.19	1.26	1.37	1.52	1.60	1.68	7.2
Torque (ft-lb)	0.00	0.85	1.70	2.50	3.4	3.8	4.2	7.8
RPM	1200	1190	1180	1168	1155	1,150	1143	0
Efficiency (%)		60.7	70.4	74.0	75.5	77.0	78.4	
P.F. (%)	9.6	25.0	39.2	50.0	62.0	63.6	65.2	0.0

Motor Speed Data

	LR	Pull-Up	BD	Rated	Idle
Speed (RPM)	0	600	1104	1155	1200
Current (Amps)	7.2	6.6	4.3	1.52	1.15
Torque (ft-lb)	7.8	7.8	10.5	3.4	0.00

Information Block

HP	0.8			
Sync. RPM	1200			
Frame	140			
Enclosure	TEFC			
Construction	NA			
Voltage	208-230/460 V			
Frequency	60 Hz			
Design	B			
LR Code letter	J			
Service Factor	1.15			
Temp Rise @ FL	66 °C			
Duty	CONT			
Ambient	40 °C			
Elevation	1,000 feet			
Rotor/Shaft wk ²	0.09 LB-Ft ²			
Ref Wdg	T63642 FR			
Sound Pressure @ 1M	999 dBA			
VFD Rating	NONE			
Outline Dwg	028911-700			
Conn. Diag	005010.01			
Additional Specifications:				
0				
EQUIV CKT (OHMS / PHASE)				
R1	R2	X1	X2	Xm
0.0000	0.0000	0.0000	0.0000	0.0000



Speed - Torque Curve

