

# PRODUCT INFORMATION PACKET



Model No: 119534.00

Catalog No: 119534.00

General Purpose Farm Duty Motor, 2 HP, 3 Ph, 60 Hz, 460 V, 3600 RPM, 56J Frame, TEFC



Regal and Leeson are trademarks of Regal Rexnord Corporation or one of its affiliated companies.

©2022 Regal Rexnord Corporation, All Rights Reserved. MC017097E



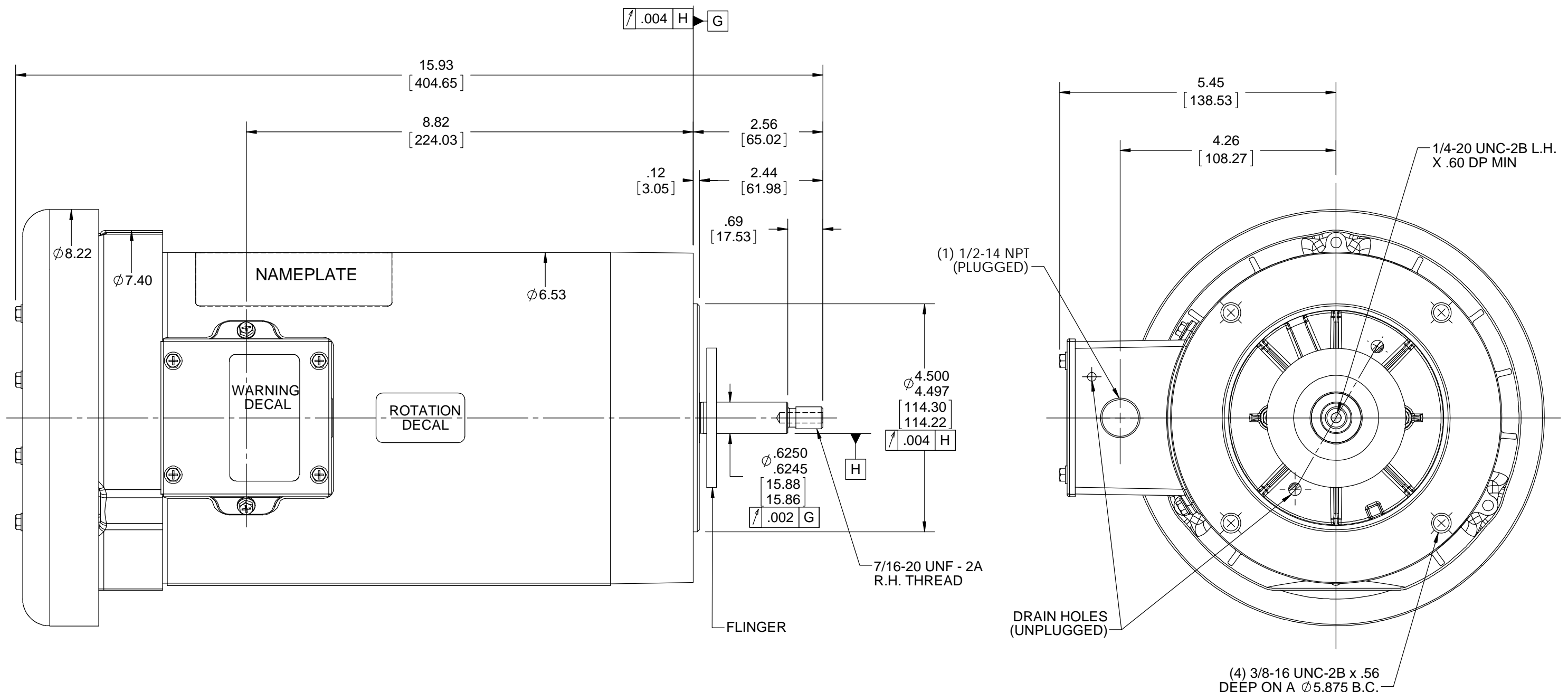


### Nameplate Specifications

Output HP	<b>2 Hp</b>	Output KW	<b>1.5 kW</b>
Frequency	<b>60 Hz</b>	Voltage	<b>460 V</b>
Current	<b>2.9 A</b>	Speed	<b>3550 rpm</b>
Service Factor	<b>1.5</b>	Phase	<b>3</b>
Efficiency	<b>85.7 %</b>	Power Factor	<b>76.5</b>
Duty	<b>Continuous</b>	Insulation Class	<b>F</b>
Design Code	<b>B</b>	KVA Code	<b>S</b>
Frame	<b>56J</b>	Enclosure	<b>Totally Enclosed Fan Cooled</b>
Thermal Protection	<b>Automatic</b>	Ambient Temperature	<b>40 °C</b>
Drive End Bearing Size	<b>6205</b>	Opp Drive End Bearing Size	<b>6203</b>
UL	<b>Recognized</b>	CSA	<b>Y</b>
CE	<b>N</b>	IP Code	<b>43</b>
Number of Speeds	<b>1</b>		

### Technical Specifications

Electrical Type	<b>Squirrel Cage Induction Run</b>	Starting Method	<b>Across The Line</b>
Poles	<b>2</b>	Rotation	<b>Reversible</b>
Resistance Main	<b>3.83 Ohms</b>	Mounting	<b>Round</b>
Motor Orientation	<b>Shaft Down</b>	Drive End Bearing	<b>Ball</b>
Opp Drive End Bearing	<b>Ball</b>	Frame Material	<b>Rolled Steel</b>
Shaft Type	<b>NEMA 56</b>	Overall Length	<b>15.93 in</b>
Frame Length	<b>8.75 in</b>	Shaft Diameter	<b>0.625 in</b>
Shaft Extension	<b>2.56 in</b>	Assembly/Box Mounting	<b>F1 ONLY</b>
Outline Drawing	<b>OL119534</b>	Connection Drawing	<b>005074.01</b>

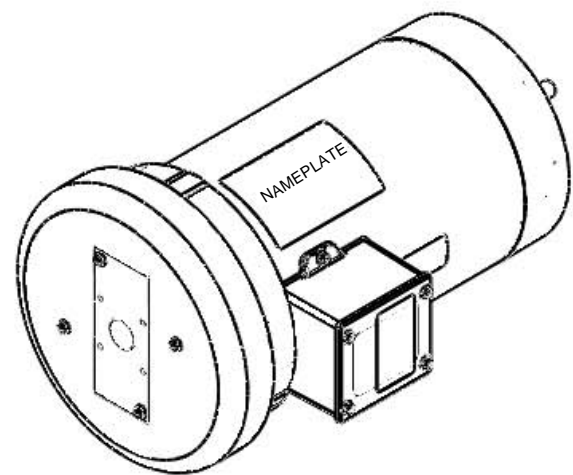


B

B

A

A



NOTES:  
GASKETS THROUGHOUT

ECCENTRICITY OF THREADED PORTION OF SHAFT IS HELD WITHIN .004 T.I.R WITH INDICATOR ON OUTSIDE DIA OF GROUND RING GAUGE BEING STATIONARY WITH RESPECT TO MOTOR

DRAWING REVISION B	REVISION BY AS	DATE 07/11/2017
ECO ECO-0127075	APPROVED BY JD	DATE 07/11/2017
ECO DESCRIPTION ADDED "1/4-20 UNC-2B L.H. X .60 DP"		
<small>COPYRIGHT REGAL BELOIT AMERICA, INC. ALL RIGHTS RESERVED.                  PROPRIETARY AND CONFIDENTIAL INFORMATION - THIS DOCUMENT IS THE PROPERTY OF                  REGAL BELOIT AMERICA, INC. ("OWNER") AND CONTAINS OWNER'S PROPRIETARY                  INFORMATION. ANY PERSON, CORPORATION OR OTHER FIRM RECEIVING IT IS DEEMED,                  BY RECEIVING IT, TO AGREE THAT IT, AND/OR ANY PART OF IT, SHALL NOT BE DISCLOSED                  TO ANY PERSON, CORPORATION OR OTHER ENTITY, DUPLICATED, AND/OR USED, EXCEPT                  AS EXPRESSLY APPROVED IN WRITING IN ADVANCE BY OWNER. THIS DOCUMENT SHALL                  BE RETURNED TO OWNER UPON REQUEST. IT MAY BE SUBJECT TO CERTAIN                  RESTRICTIONS UNDER APPLICABLE EXPORT CONTROL LAWS AND REGULATIONS.</small>		

TOLERANCES UNLESS OTHERWISE SPECIFIED:			
DEC.	INCH	mm	ANGLE
.X	±0.1	[±2.5]	±0.5°
.XX	±0.01	[±0.25]	
.XXX	±0.005	[±0.127]	
.XXXX	±0.0005	[±0.0127]	
REMOVE BURRS & BREAK SHARP EDGES: .003/.015 [0.076/.381] X 45° CORNER FILLETS: R.02 [0.51]			
MACHINED SURFACES: 125 INCH 3.2 mm SHOWN IN [BRACKETS]			

DRAWN BY LK
DATE 05/09/2016
APPROVED BY JD
DATE 05/09/2016
REFERENCE 028850
THIRD ANGLE PROJECTION

<b>REGAL</b> ™ Regal Beloit America, Inc.	
DESCRIPTION	OUTLINE TEFC - "C" FACE
MATERIAL	PROCESS/FINISH
SIZE B	DRAWING NUMBER OL119534
	SHEET 1 OF 1

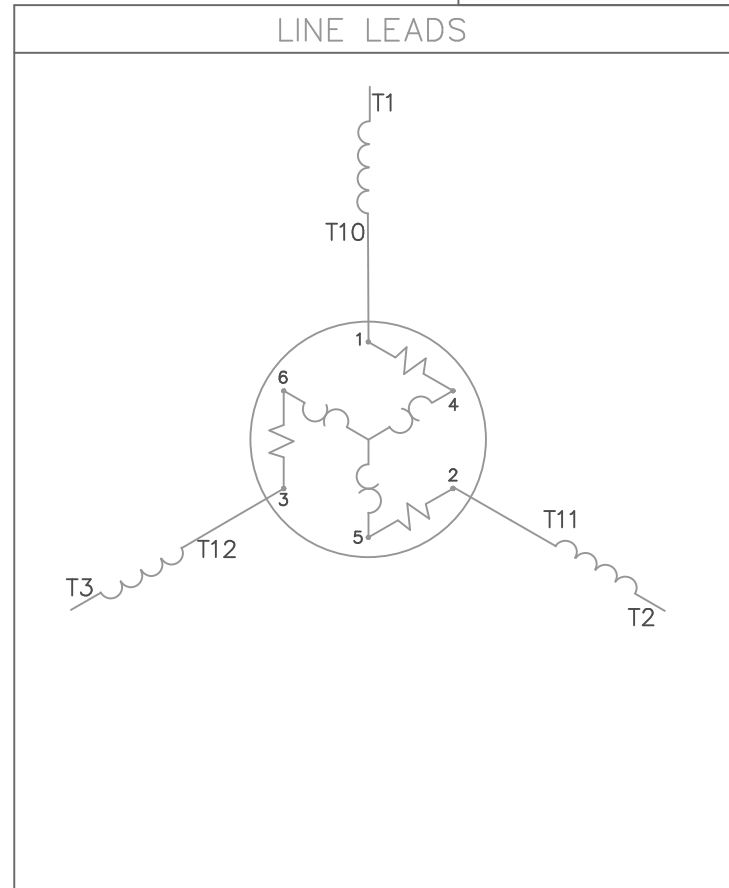
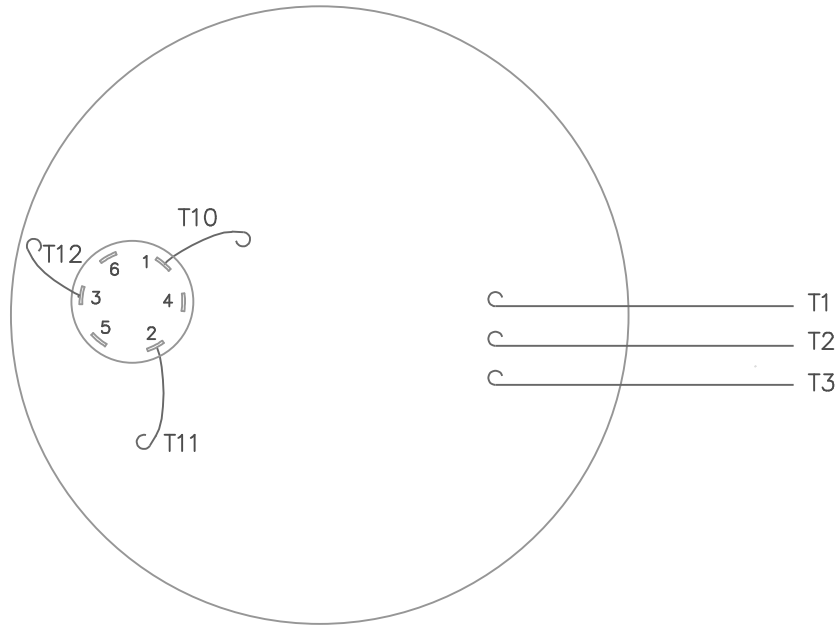
4

3

2

1

VIEW FROM OUTSIDE OF MOTOR AT SWITCH END.



L1	L2	L3
T1	T2	T3

				TOLERANCES UNLESS OTHERWISE SPECIFIED	
				DECIMALS	
				.00	± .01
				.000	± .005
9	REDRAWN TO CURRENT STANDARDS	DBT	06/03/97	.0000	± .0005
NO.	REVISION	BY	DATE	FRACTIONS	± 1/64
				ANGLES	± 1/2°
				INCH/MM	

<b>LEESON</b> ELECTRIC CORPORATION			
DRAWN JRW	03/21/75	TITLE	EXTERNAL WIRING DIAGRAM
CH'K'D. TEM	03/26/75		TYPE "T" W/PROTECTOR
APPR. JCW	02/15/77	MAT'L.	DECAL - 004169
SCALE	1=1	<b>BRF</b>	
REF.	FINISH		
FMF	W-T5529		
		SIZE	DRAWING NO.
		A	005074-01

THIS DRAWING IN DESIGN AND DETAIL IS OUR PROPERTY AND MUST NOT BE USED EXCEPT IN CONNECTION WITH OUR WORK ALL RIGHTS OF DESIGN AND INVENTION ARE RESERVED



1051 CHEYENNE AVE.  
GRAFTON, WI 53024  
PH. 262-377-8810

**CERTIFICATION DATA SHEET**

**CUSTOMER:**  
**ORDER #:**  
**CONN. DIAGRAM:** 005074.01  
**OUTLINE:** OL119534  
**WINDING #:** T632268 FR 2 A

**CUSTOMER PO#:**  
**CATALOG #:**  
**CUSTOMER PART #:**  
**MOUNTING:** F1 ONLY

**TYPICAL MOTOR PERFORMANCE DATA**

HP	KW	SYNC. RPM	F.L. RPM	FRAME	ENCLOSURE	KVA CODE	DESIGN
2	1.49	3600	3550	56J	TEFC	S	B

PH	Hz	VOLTS	AMPS	START TYPE	DUTY	INSL	S.F.	AMB°C
3	60	460	2.9	ACROSS THE LINE	CONTINUOUS	F4	1.50	40

FULL LOAD EFF:	85.7	3/4 LOAD EFF:	83	1/2 LOAD EFF:	78.9	GTD. EFF	ELEC. TYPE
FULL LOAD PF:	76.5	3/4 LOAD PF:	68	1/2 LOAD PF:	56	0	SQ CAGE IND RUN

F.L. TORQUE	LOCKED ROTOR AMPS	L.R. TORQUE	B.D. TORQUE	F.L. RISE°C
3 LB-FT	38.7	18.59 LB-FT 620 %	20.48 LB-FT 683 %	0

SOUND PRESSURE @ 3 FT.	SOUND POWER	ROTOR WK^2	MAX. WK^2	SAFE STALL TIME	STARTS / HOUR	APPROX. MOTOR WGT
- dBA	- dBA	0.09 LB-FT^2	0.1 LB-FT^2	10 SEC.	-	35 LBS.

**\*\*\* SUPPLEMENTAL INFORMATION \*\*\***

DE BRACKET TYPE	ODE BRACKET TYPE	MOUNT TYPE	ORIENTATION	SEVERE DUTY	HAZARDOUS LOCATION	DRIP COVER	SCREENS	PAINT
C-FACE	STANDARD	ROUND	SHAFT DOWN	FALSE	NONE	TRUE	NONE	GRAY - LIGHT (EPOXY)

BEARINGS		GREASE	SHAFT TYPE	SPECIAL DE	SPECIAL ODE	SHAFT MATERIAL	FRAME MATERIAL
DE	ODE						
BALL	BALL	POLYREX EM	STANDARD 56	NONE	NONE	416 STAINLESS (C-503)	ROLLED STEEL
6205	6203						

THERMO-PROTECTORS				THERMISTORS	CONTROL	SPACE HEATERS
THERMOSTATS	PROTECTORS	WDG RTDs	BRG RTDs			
NONE	AUTOMATIC	NONE	NONE	NONE	FALSE	NONE VOLTS

<b>INVERTER TORQUE:</b> NONE
<b>INV. HP SPEED RANGE:</b> NONE
<b>ENCODER:</b> NONE
NONE NONE
NONE NONE PPR
<b>BRAKE:</b> NONE NONE
NONE P/N NONE
NONE NONE
NONE FT-LB NONE V NONE Hz

\*  
N  
O  
T  
E  
S  
\*

Data Sheet

Date: 8/20/2018

119534.00



Data @ **460 V**

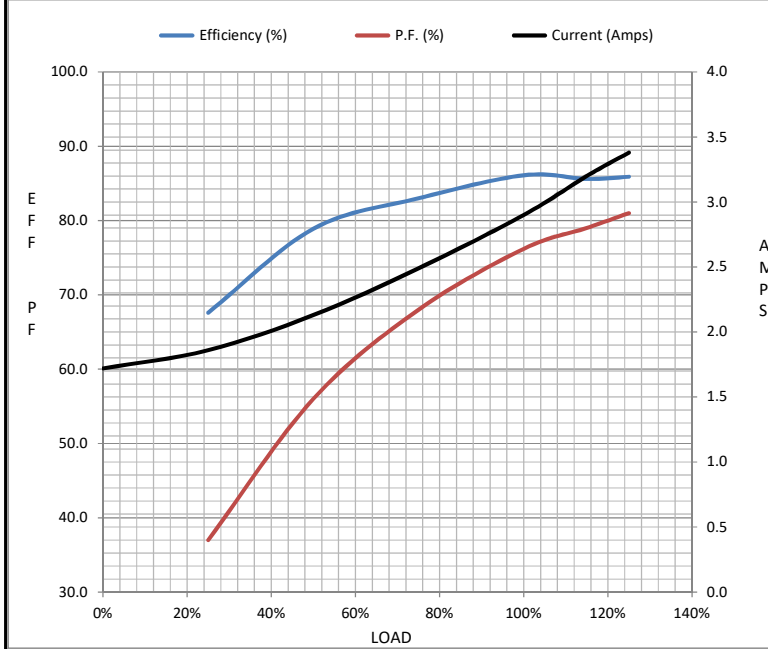
Motor Load Data

Load	0%	25%	50%	75%	100%	115%	125%	LR
Current (Amps)	1.72	1.86	2.13	2.49	2.90	3.2	3.4	38.7
Torque (ft-lb)	0.00	0.12	1.47	2.22	3.0	2.01	3.7	18.6
RPM	3600	3584	3569	3554	3540	3,529	3523	0
Efficiency (%)		67.6	78.9	83.0	86.1	85.6	85.9	
P.F. (%)	17.0	37.0	56.0	68.0	76.2	79.0	81.0	0.0

Motor Speed Data

	LR	Pull-Up	BD	Rated	Idle
Speed (RPM)	0	667	2548	3540	3600
Current (Amps)	38.7	35.6	23.2	2.90	1.72
Torque (ft-lb)	18.6	19.6	20.5	3.0	0.00

Information Block				
HP	2.0			
Sync. RPM	3600			
Frame	140			
Enclosure	TEFC			
Construction	TFR			
Voltage	460 V			
Frequency	60 Hz			
Design	A			
LR Code letter	N			
Service Factor	1.15			
Temp Rise @ FL	0 ° C			
Duty	CONT			
Ambient	40 ° C			
Elevation	1,000 feet			
Rotor/Shaft wk <sup>2</sup>	0.09 Lb-Ft <sup>2</sup>			
Ref Wdg	T632268 FR			
Sound Pressure @ 1M	0 dBA			
VFD Rating	NONE			
Outline Dwg	OL119534			
Conn. Diag	005074.01			
Additional Specifications:				
0				
0				
EQUIV CKT (OHMS / PHASE)				
R1	R2	X1	X2	Xm
0.0000	0.0000	0.0000	0.0000	0.0000



Speed - Torque Curve

