

PRODUCT INFORMATION PACKET



Model No: 119266.00
Catalog No: 119266.00
0.50 HP Washdown Motor, 3 phase, 1200 RPM, 208-230/460 V, 56HC Frame, TENV
Paint Free NEMA Washdown Motors



Regal and Leeson are trademarks of Regal Beloit Corporation or one of its affiliated companies.
©2019 Regal Beloit Corporation, All Rights Reserved. MC017097E

The REGAL logo is located in the bottom right corner. It features the word "REGAL" in a white, bold, sans-serif font, set against a dark grey rectangular background. The logo is positioned on a blue vertical band that has a halftone dot pattern.



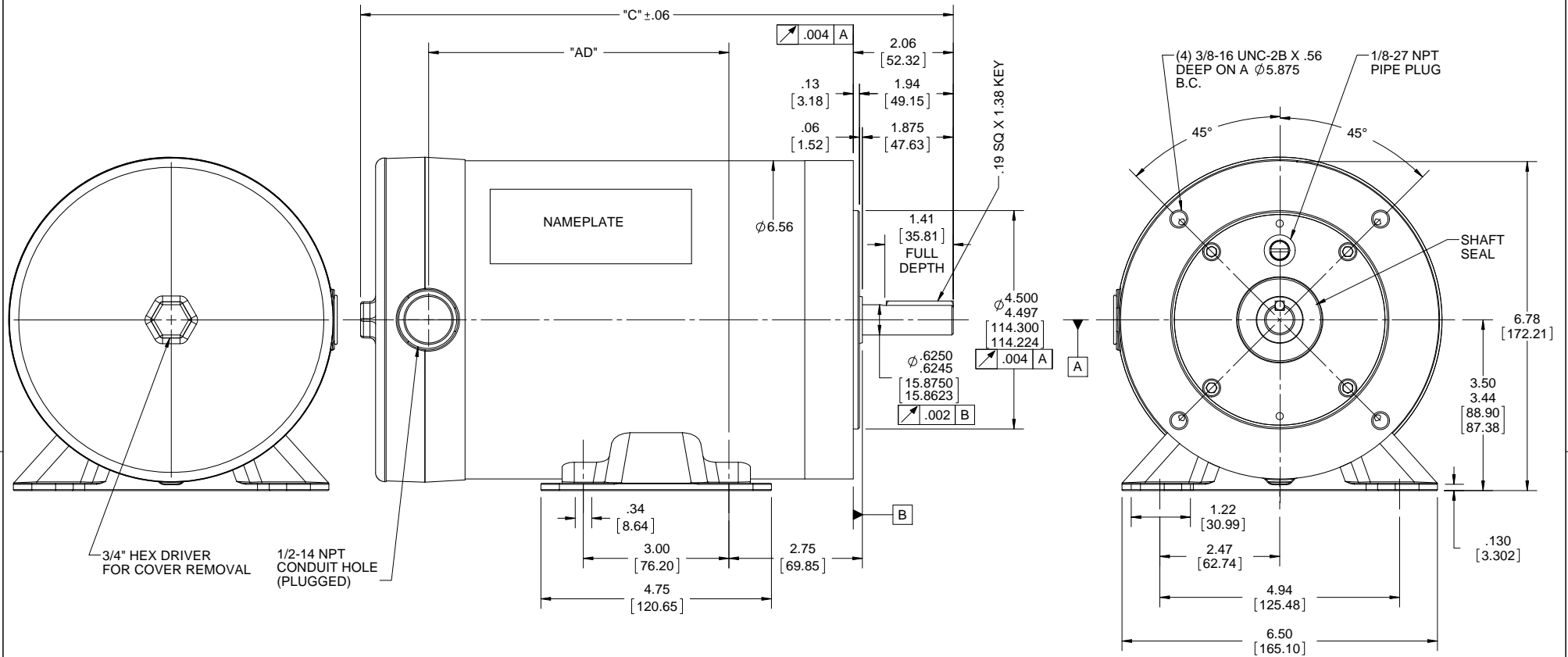
Nameplate Specifications

Output HP	0.50 Hp	Output KW	0.37 kW
Frequency	60 Hz	Voltage	208-230/460 V
Current	2.4-2.3/1.2 A	Speed	1140 rpm
Service Factor	1.15	Phase	3
Efficiency	77 %	Power Factor	54
Duty	Continuous	Insulation Class	F
Design Code	B	KVA Code	K
Frame	56HC	Enclosure	Totally Enclosed Non Ventilated
Thermal Protection	No	Ambient Temperature	40 °C
Drive End Bearing Size	6205	Opp Drive End Bearing Size	6205
UL	Recognized	CSA	Y
CE	Y	IP Code	69

Technical Specifications

Electrical Type	Squirrel Cage Induction Run	Starting Method	Across The Line
Poles	6	Rotation	Reversible
Resistance Main	29.36 Ohms	Mounting	Rigid base
Motor Orientation	Horizontal	Drive End Bearing	Ball
Opp Drive End Bearing	Ball	Frame Material	Stainless Steel
Shaft Type	NEMA 56	Overall Length	11.71 in
Frame Length	6.50 in	Shaft Diameter	0.625 in
Shaft Extension	2.06 in	Assembly/Box Mounting	F1/F2 CAPABLE

This is an uncontrolled document once printed or downloaded and is subject to change without notice. Date Created:01/11/2019



DASH NO	"C"	"AD"
525	10.46	4.44
550	10.71	4.69
575	10.96	4.94
600	11.21	5.19
625	11.46	5.44
650	11.71	5.69
675	11.96	5.94
700	12.21	6.19
725	12.46	6.44
750	12.71	6.69
775	12.96	6.94
800	13.21	7.19

DRAWING REVISION C	REVISION BY AS	DATE 06/05/2017
ECO ECO-0124772	APPROVED BY JD	DATE 06/05/2017
ECO DESCRIPTION APPLIED KEY DETAIL & PLUGGED HOLE.		
<small> COPYRIGHT REGAL BELOIT AMERICA, INC. ALL RIGHTS RESERVED. PROPRIETARY AND CONFIDENTIAL INFORMATION - THIS DOCUMENT IS THE PROPERTY OF REGAL BELOIT AMERICA, INC. (OWNER) AND CONTAINS OWNERS PROPRIETARY INFORMATION. ANY PERSON, CORPORATION OR OTHER FIRM RECEIVING IT IS DESIRED, BY RECEIVING IT, TO AGREE THAT IT, AND/OR ANY PART OF IT, SHALL NOT BE DISCLOSED TO ANY PERSON, CORPORATION OR OTHER ENTITY, DUPLICATED, AND/OR USED, EXCEPT AS EXPRESSLY APPROVED IN WRITING IN ADVANCE BY OWNER. THIS DOCUMENT SHALL BE RETURNED TO OWNER UPON REQUEST. IT MAY BE SUBJECT TO CERTAIN RESTRICTIONS UNDER APPLICABLE EXPORT CONTROL LAWS AND REGULATIONS. </small>		

TOLERANCES UNLESS OTHERWISE SPECIFIED:		
DEC.	INCH	mm
.X	±0.1	[±2.5]
.XX	±0.03	[±0.76]
.XXX	±0.005	[±0.127]
.XXXX	±0.0005	[±0.0127]
REMOVE BURRS & BREAK SHARP EDGES: .003/.015 [0.076/.381] X 45°		
CORNER FILLETS: R.02 [51]		
MACHINED SURFACES: 200 INCH 5.1 mm SHOWN IN [BRACKETS]		

DRAWN BY LST	DATE 11/19/14
APPROVED BY	DATE
REFERENCE	THIRD ANGLE PROJECTION

REGAL™ Regal Beloit America, Inc.

MOTOR ASSY
56C FRAME - TENV RIGID "C"

MATERIAL: _____ PROCESS/FINISH: _____

SIZE **B** DRAWING NUMBER **607-0188** SHEET **1 OF 1**