

# PRODUCT INFORMATION PACKET



Model No: 119217.00

Catalog No: 119217.00

General Purpose Motor, 1 HP, 1 Ph, 60 Hz, 115/208-230 V, 1800 RPM, 56C Frame, TENV



Regal and Leeson are trademarks of Regal Rexnord Corporation or one of its affiliated companies.

©2022 Regal Rexnord Corporation, All Rights Reserved. MC017097E



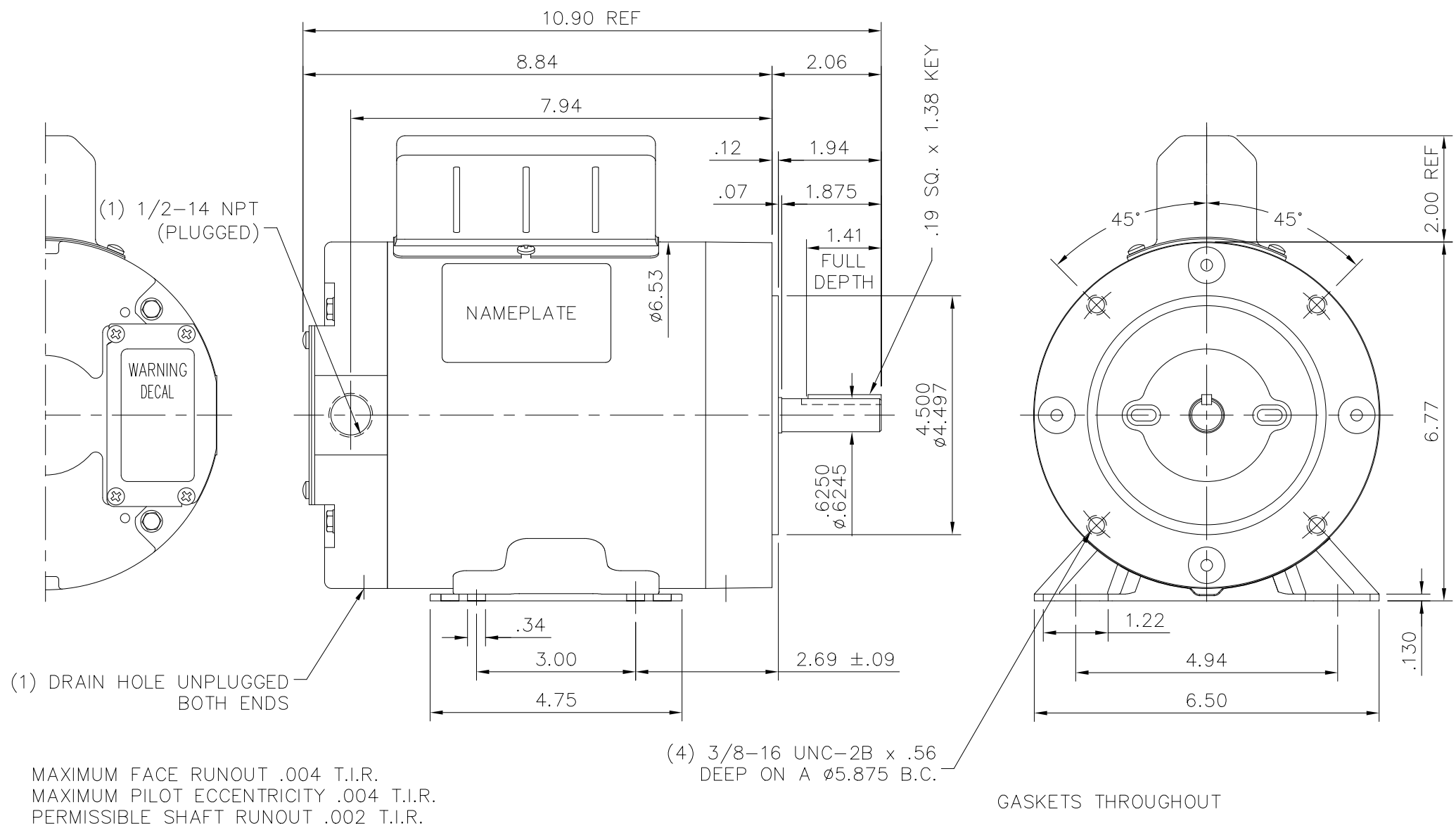


### Nameplate Specifications

|                        |               |                            |                                 |
|------------------------|---------------|----------------------------|---------------------------------|
| Output HP              | 1 Hp          | Output KW                  | 0.75 kW                         |
| Frequency              | 60 Hz         | Voltage                    | 115/208-230 V                   |
| Current                | 12.8/6.4 A    | Speed                      | 1725 rpm                        |
| Service Factor         | 1             | Phase                      | 1                               |
| Efficiency             | 75 %          | Power Factor               | 68                              |
| Duty                   | 15 Minute     | Insulation Class           | B                               |
| Design Code            | N             | KVA Code                   | K                               |
| Frame                  | 56C           | Enclosure                  | Totally Enclosed Non Ventilated |
| Thermal Protection     | No Protection | Ambient Temperature        | 40 °C                           |
| Drive End Bearing Size | 6203          | Opp Drive End Bearing Size | 6203                            |
| UL                     | Recognized    | CSA                        | Y                               |
| CE                     | N             | IP Code                    | 43                              |
| Number of Speeds       | 1             |                            |                                 |

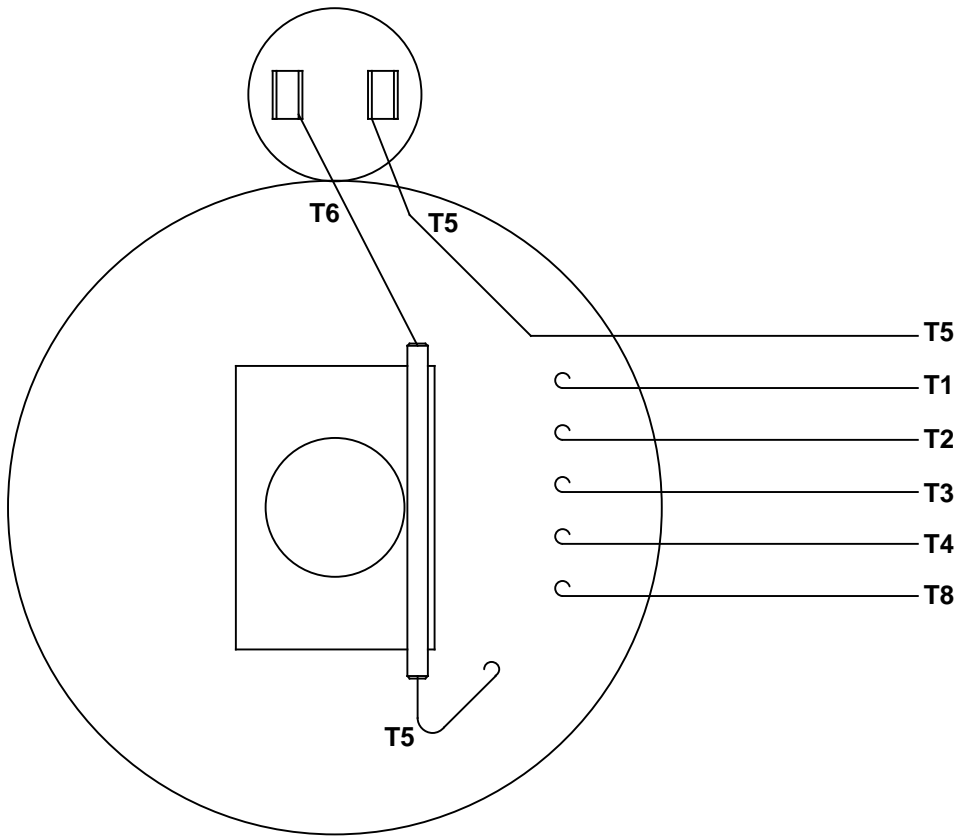
### Technical Specifications

|                       |                               |                       |                            |
|-----------------------|-------------------------------|-----------------------|----------------------------|
| Electrical Type       | Capacitor Start Induction Run | Starting Method       | Across The Line            |
| Poles                 | 4                             | Rotation              | Selective Counterclockwise |
| Resistance Main       | 1.9 Ohms                      | Mounting              | Rigid Base                 |
| Motor Orientation     | Horizontal                    | Drive End Bearing     | Ball                       |
| Opp Drive End Bearing | Ball                          | Frame Material        | Stainless Steel            |
| Shaft Type            | NEMA 56                       | Overall Length        | 10.90 in                   |
| Frame Length          | 6.00 in                       | Shaft Diameter        | 0.625 in                   |
| Shaft Extension       | 1.88 in                       | Assembly/Box Mounting | F1 ONLY                    |
| Outline Drawing       | OL119217                      | Connection Drawing    | 005005.01                  |

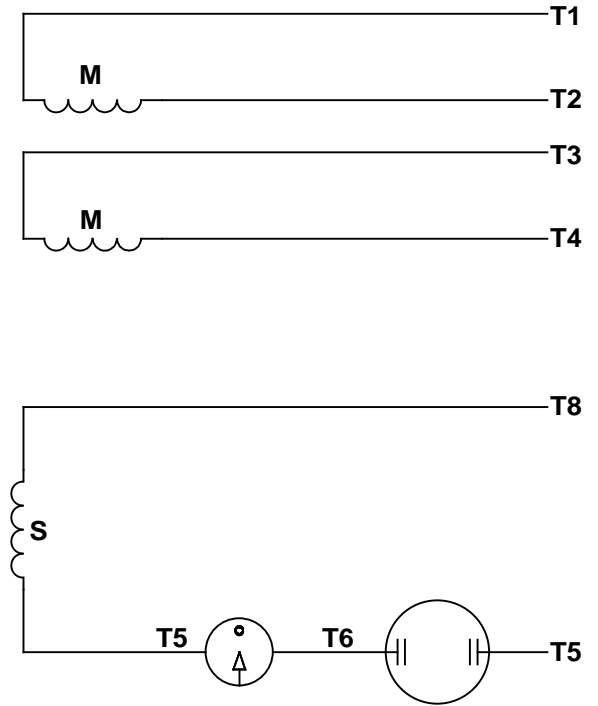


|  |   |             |     | TOLERANCES UNLESS SPECIFIED |                 | LEESON   | ELECTRIC MOTORS<br>GEARMOTORS<br>AND DRIVES  | DRAWN PVR 06/23/14 |             |      |
|--|---|-------------|-----|-----------------------------|-----------------|----------|--|--------------------|-------------|------|
|  |   |             |     | DEC.                        | INCHES          |          |  | CHK                | JD 06/23/14 |      |
|  |   |             |     | .X                          | $\pm .1$        |          |  | APPD               |             |      |
|  |   |             |     | .XX                         | $\pm .03$       | TITLE    | OUTLINE - 56C FRAME<br>TENV - RIGID "C" FACE | SCALE              | NTS         |      |
| 02   | N.P. UPDATED TO MYLAR AS PER ECR-0222053        | PP 12/06/22 | PP  | .XXX                        | $\pm .005$      |          |  | REF                | OL117497    |      |
| 01   | UPDATED NP TO LASER ENGRAVED AS PER ECR-0221531 | PP 10/14/22 | PP  | .XXXX                       | $\pm .0005$     | MAT'L.   |  | FMF                |             |      |
| NO.  | REVISION  | BY & DATE   | CHK | ANG                         | $\pm 1/2^\circ$ | FINISH   |  | PREV               |             |      |
| THIS DRAWING IN DESIGN AND DETAIL IS OUR PROPERTY AND MUST NOT BE USED EXCEPT IN CONNECTION WITH OUR WORK ALL RIGHTS OF DESIGN AND INVENTION ARE RESERVED THIS IS AN ELECTRONICALLY GENERATED DOCUMENT - DO NOT SCALE THIS PRINT |   |             |     | RFP                         |                 | CAD FILE | OL119217                                     | SIZE               | DRAWING NO. | REV. |
|  |   |             |     | DIST                        |                 | 3 of 6   |  | A                  | OL119217    | 02   |

VIEW FROM OUTSIDE OF MOTOR AT SWITCH END.



LINE LEADS



RBC PROPRIETARY AND CONFIDENTIAL INFORMATION  
 This document is the property of REGAL BELOIT CORPORATION ("RBC") including its subsidiaries and divisions and contains proprietary information of RBC. This document is loaned on the express condition that neither it nor the information contained therein shall be disclosed to others without the express written consent of RBC, and that the information shall be used by the recipient only as approved expressly by RBC. This document shall be returned to RBC upon its request. This document may be subject to certain restrictions under U.S. export control laws and regulations.

|              | ROTATION<br>FACING<br>LEAD END | L1         | L2         | JOIN       |
|--------------|--------------------------------|------------|------------|------------|
| HIGH<br>VOLT | C.C.W.                         | T1         | T4, T5     | T2, T3, T8 |
|              | C.W.                           | T1         | T4, T8     | T2, T3, T5 |
| LOW<br>VOLT  | C.C.W.                         | T1, T3, T8 | T2, T4, T5 | -----      |
|              | C.W.                           | T1, T3, T5 | T2, T4, T8 | -----      |

|                           |   |              |                                |              |   |   |                    |
|---------------------------|---|--------------|--------------------------------|--------------|---|---|--------------------|
| --                        | REDRAWN IN SOLIDWORKS                     | VJB 02/16/11 | TOLERANCES<br>UNLESS SPECIFIED |              | <b>LEESON</b>   | ELECTRIC MOTORS<br>GEARMOTORS<br>AND DRIVES | DRAWN ADH 08/06/73 |
| 27                        | UPDATED TO CURRENT STANDARDS              | DBT 05/27/97 | DEC                            | INCHES       |   |   | CHK                |
| 26                        | ADDED PAGE 32 (114787) & PAGE 33 (114788) | KAZ 12/20/95 | PG                             | .X ±.1       | TITLE EXTERNAL WIRING DIAGRAM<br>TYPE "C" W/O PROTECTOR |   | APPR JCW 03/09/79  |
| 25                        | ADDED PAGE 31                             | KAZ 04/19/95 | DL                             | .XX ±.01     |   |   | SCALE 1:1          |
| 24                        | ADDED PAGES 29 & 30                       | KMM 03/30/95 | DL                             | .XXX ±.005   | MAT'L DECAL - 004012                                    |   | REF FIG 2-23 C4A   |
| 23                        | ADDED PAGE 28                             | KMM 01/27/95 |                                | .XXXX ±.0005 |   |   | FMF MGI-2.4B       |
| NO                        | REVISION                                  | BY & DATE    | CHK                            | ANG ±1/2°    | FINISH  | PAGE  | OF                 |
| THIRD ANGLE<br>PROJECTION |   |              | RFP                            | PREV         | SIZE  | DRAWING NO                                  | REV                |
|                           |   |              | NETWORK FILE NAME 00500501     |              | <b>A</b>  | <b>005005-01</b>                            | --                 |



1051 CHEYENNE AVE.  
GRAFTON, WI 53024  
PH. 262-377-8810

CATALOG #: 119217.00

CONN. DIAGRAM: 005005.01

OUTLINE: OL119217

WINDING #: C634256 NR 3 XH

MOUNTING: F1 ONLY

**TYPICAL MOTOR PERFORMANCE DATA**

| HP | kW   | SYNC. RPM | F.L. RPM | FRAME | ENCLOSURE | KVA CODE | DESIGN |
|----|------|-----------|----------|-------|-----------|----------|--------|
| 1  | 0.75 | 1800      | 1725     | 56C   | TENV      | K        | N      |

| PH | Hz | VOLTS       | AMPS     | START TYPE      | DUTY      | INSL | S.F. | AMB°C |
|----|----|-------------|----------|-----------------|-----------|------|------|-------|
| 1  | 60 | 115/208-230 | 12.8/6.4 | ACROSS THE LINE | 10 MINUTE | B4   | 1.0  | 40    |

| FULL LOAD EFF: | 75 | 3/4 LOAD EFF: | 72.8 | 1/2 LOAD EFF: | 69.7 | GTD. EFF | ELEC. TYPE        |
|----------------|----|---------------|------|---------------|------|----------|-------------------|
| FULL LOAD PF:  | 68 | 3/4 LOAD PF:  | 58   | 1/2 LOAD PF:  | 45.6 | 70       | CAP START IND RUN |

| F.L. TORQUE | LOCKED ROTOR AMPS | L.R. TORQUE   | B.D. TORQUE     | F.L. RISE°C |
|-------------|-------------------|---------------|-----------------|-------------|
| 3 LB-FT     | 66 / 33           | 9 LB-FT 300 % | 6.9 LB-FT 230 % | 73          |

| SOUND PRESSURE @ 3 FT. | SOUND POWER | ROTOR WK^2  | MAX. WK^2 | SAFE STALL TIME | STARTS / HOUR | APPROX. MOTOR WGT |
|------------------------|-------------|-------------|-----------|-----------------|---------------|-------------------|
| 60 dBA                 | 70 dBA      | 0.1 LB-FT^2 | 0 LB-FT^2 | 0 SEC.          | 0             | 29 LBS.           |

\*\*\* SUPPLEMENTAL INFORMATION \*\*\*

| DE BRACKET TYPE | ODE BRACKET TYPE | MOUNT TYPE | ORIENTATION | SEVERE DUTY | HAZARDOUS LOCATION | DRIP COVER | SCREENS | PAINT    |
|-----------------|------------------|------------|-------------|-------------|--------------------|------------|---------|----------|
| C-FACE          | STANDARD         | RIGID      | HORIZONTAL  | FALSE       | NONE               | FALSE      | NONE    | NO PAINT |

| BEARINGS |      | GREASE     | SHAFT TYPE  | SPECIAL DE | SPECIAL ODE | SHAFT MATERIAL           | FRAME MATERIAL  |
|----------|------|------------|-------------|------------|-------------|--------------------------|-----------------|
| DE       | ODE  |            |             |            |             |                          |                 |
| BALL     | BALL | POLYREX EM | STANDARD 56 | NONE       | NONE        | 1144 STRESSPROOF (C-223) | STAINLESS STEEL |
| 6203     | 6203 |            |             |            |             |                          |                 |

| THERMO-PROTECTORS |            |          |          | THERMISTORS | CONTROL | SPACE HEATERS |
|-------------------|------------|----------|----------|-------------|---------|---------------|
| THERMOSTATS       | PROTECTORS | WDG RTDs | BRG RTDs |             |         |               |
| NONE              | NOT        | NONE     | NONE     | NONE        | FALSE   | NONE VOLTS    |

|                                 |  |
|---------------------------------|--|
| *<br>N<br>O<br>T<br>E<br>S<br>* | <b>INVERTER TORQUE:</b> NONE<br><b>INV. HP SPEED RANGE:</b> NONE                   |
|                                 | <b>ENCODER:</b> NONE<br>NONE NONE<br>NONE NONE PPR                                 |
|                                 | <b>BRAKE:</b> NONE NONE<br>NONE P/N NONE<br>NONE NONE<br>NONE FT-LB NONE V NONE Hz |



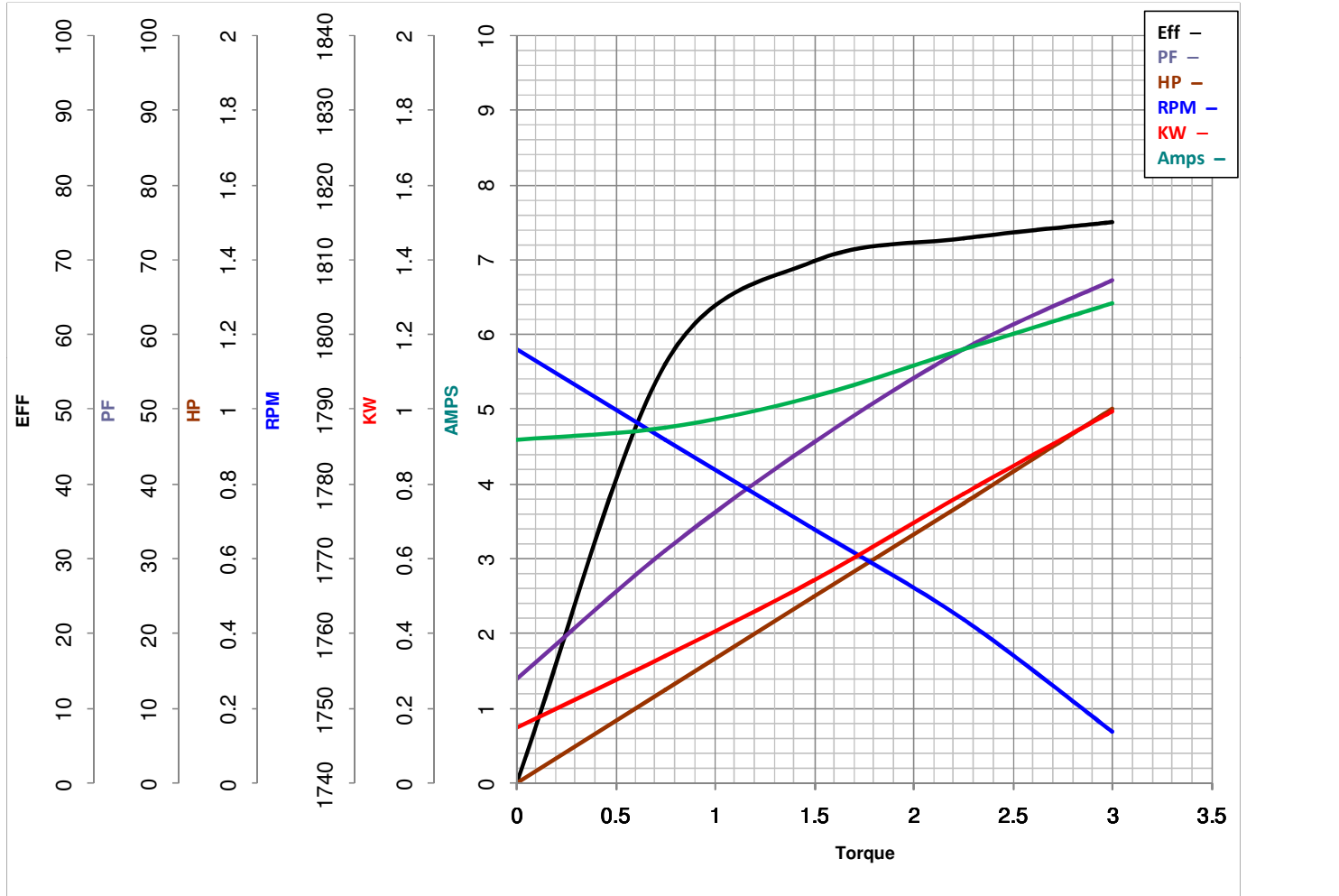
**LEESON ELECTRIC CORPORATION**  
 TYPICAL PERFORMANCE CURVE for AC MOTOR

Model No 119217.00

Curve at 230 Volts HP 1.00 PHASE 1  
60 HZ  
1 HP VOLTS 115/208-230

Catalog No 119217.00

HZ 60 RPM 1725



Torque in Lb.Ft

FL TORQUE 3 Lb.Ft  
 BD TORQUE 6.9 Lb.Ft  
 LR TORQUE 9 Lb.Ft

FL AMPS 12.8/6.4  
 PU TORQUE 6.7 Lb.Ft  
 LR AMPS 33

WINDING C634256-3

Date 3/15/2018