

PRODUCT INFORMATION PACKET



Model No: C6T17NC333B

Catalog No: 117699.00

..3/4HP..1800RPM.56C.TEFC.230V.3PH.60HZ.CONT.40C..C-FACE.C6T17NC333B.....BRAKE MOTOR.....

Brake



Regal and Leeson are trademarks of Regal Beloit Corporation or one of its affiliated companies.

©2018 Regal Beloit Corporation, All Rights Reserved. MC017097E



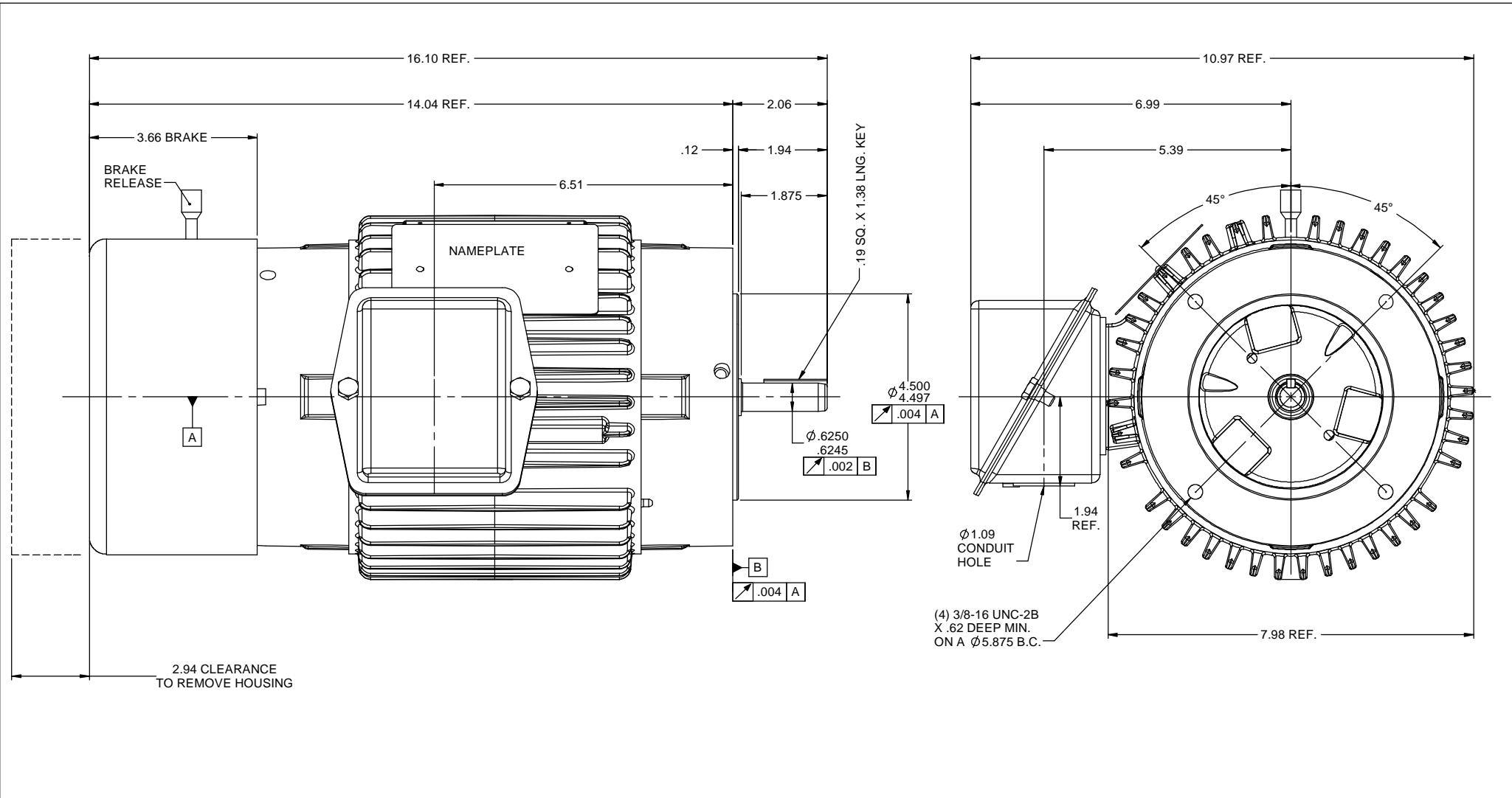



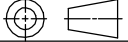
Nameplate Specifications

| | | | |
|----------------------------|--|------------------------|-------------------|
| Output HP | 0.75 Hp | Output KW | 0.56 kW |
| Frequency | 60 Hz | Voltage | 230 V |
| Current | 2.2 A | Speed | 1760 rpm |
| Service Factor | 1 | Phase | 3 |
| Efficiency | 85.5 % | Duty | Continuous |
| Insulation Class | H | Design Code | B |
| KVA Code | N | Frame | 56C |
| Enclosure | Totally Enclosed Non Ventilated | Overload Protector | No |
| Ambient Temperature | 40 °C | Drive End Bearing Size | 6205 |
| Opp Drive End Bearing Size | 6203 | UL | Recognized |
| CSA | Y | CE | N |
| IP Code | 43 | | |

Technical Specifications

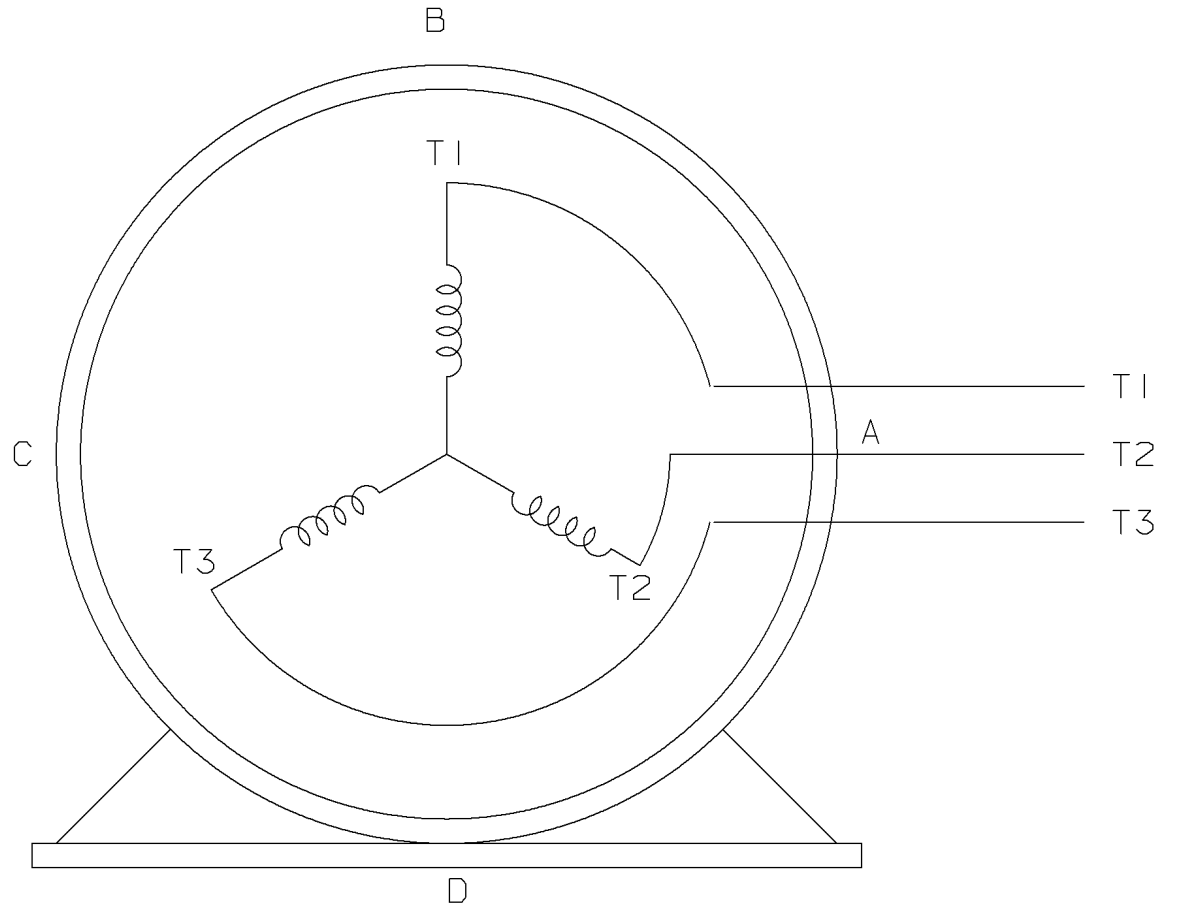
| | | | |
|-----------------------|------------------------------------|-----------------------|-------------------------------|
| Electrical Type | Squirrel Cage Induction Run | Starting Method | Across The Line |
| Poles | 4 | Rotation | Reversible |
| Mounting | Round | Motor Orientation | HORIZONTAL |
| Drive End Bearing | BALL / HEAT STABILIZED | Opp Drive End Bearing | BALL / HEAT STABILIZED |
| Frame Material | Cast Iron | Shaft Type | T |
| Overall Length | 16.10 in | Frame Length | 6.25 in |
| Shaft Diameter | 0.625 in | Shaft Extension | 1.88 in |
| Assembly/Box Mounting | F1 ONLY | | |
| Outline Drawing | OL117699 | Connection Diagram | A-EE7300-LE |



| | | | | | | | | | |
|----|--|--|--|-----------------------------|-------------------|---|----------|-------------------|-----|
| | | | | TOLERANCES UNLESS SPECIFIED | |  Regal-Beloit Corporation | | DRAWN LST 9/14/12 | |
| | | | | DEC | INCHES | | | CHK | |
| | | | | X | $\pm .1$ | | APPR | | |
| | | | | XX | $\pm .01$ | TITLE OUTLINE 56 FRAME BRAKEMOTOR | | SCALE | 1:2 |
| | | | | XXX | $\pm .005$ | TENV - "C" FACE | | REF | |
| | | | | XXXX | $\pm .0005$ | MATL | | FMF | |
| NO | REVISION | | | CHK | ANG | $\pm 1/2^\circ$ | FINISH | PAGE | OF |
| | THIRD ANGLE PROJECTION  | | | BY & DATE | RFP | PREV | SIZE | DRAWING NO | REV |
| | | | | | NETWORK FILE NAME | OL117699 | B | OL117699 | |

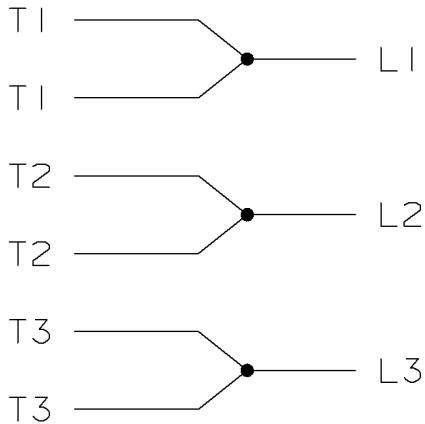
THREE PHASE - SINGLE VOLTAGE
MOTOR - CONDUIT BOX @ 'A'

TO REVERSE ROTATION:
INTERCHANGE ANY TWO LINE
LEAD CONNECTIONS




VIEW OF TERMINAL END

IF MOTOR HAS
6 LEADS



A-9806 DECAL

| | | | | | | | | | | |
|--|-------------|-----|------------|--|---------------|---|----------------------|------|-------------|------|
| | | | | TOLERANCES UNLESS SPECIFIED | |  ELECTRIC MOTORS GEARMOTORS AND DRIVES | DRAWN MSG 05-22-2002 | | | |
| | | | | DEC. | TOLERANCE | | CHK ML 05-22-2002 | | | |
| | | | | .X | ± .1 | | APPD GK 05-22-2002 | | | |
| | | | | .XX | ± .02 | | SCALE | | | |
| | | | | .XXX | ± .005 | | REF | | | |
| 1 | NEW DRAWING | MSG | 05-22-2002 | ML | .XXXX ± .0005 | <input checked="" type="checkbox"/> SURFACE ROUGHNESS UNLESS SPECIFIED | MAT'L. | FMF | | |
| NO. | REVISION | BY | DATE | CHK | ANG ± 7'30" | FINISH | PREV | | | |
| THIS DRAWING IN DESIGN AND DETAIL IS OUR PROPERTY AND MUST NOT BE USED EXCEPT IN CONNECTION WITH OUR WORK. ALL RIGHTS OF DESIGN AND INVENTION ARE RESERVED. THIS IS AN ELECTRONICALLY GENERATED DOCUMENT - DO NOT SCALE THIS PRINT | | | | PURCHASED | | CAD FILE EE7300-LE | SHOP BOOK | SIZE | DRAWING NO. | REV. |
| | | | | DIST WA - LB - WP - LM - BR - BR | | | | A | EE7300-LE | I |



| Motor Load Data | | | | | | LR | |
|-----------------|------|------|------|------|------|-------|------|
| Load | 0% | 25% | 50% | 75% | 100% | 115% | 125% |
| Current (Amps) | 1.50 | 1.56 | 1.60 | 1.80 | 2.20 | 2.50 | 2.80 |
| Torque (ft-lb) | 0.00 | 0.45 | 0.90 | 1.70 | 2.24 | 2.57 | 2.90 |
| RPM | 1800 | 1785 | 1775 | 1765 | 1760 | 1,754 | 1745 |
| Efficiency (%) | | 67.0 | 78.5 | 83.0 | 85.5 | 85.0 | 84.5 |
| P.F. (%) | 12.0 | 36.0 | 54.0 | 68.0 | 75.0 | 77.5 | 80.0 |

| Motor Speed Data | | | | | | Information Block | |
|------------------|------|---------|------|-------|------|-------------------|-----------|
| | LR | Pull-Up | BD | Rated | Idle | HP | Sync. RPM |
| Speed (RPM) | 0 | 800 | 1360 | 1760 | 1800 | 0.8 | 1800 |
| Current (Amps) | 23.0 | 19.4 | 14.0 | 2.20 | 1.50 | | 145 |
| Torque (ft-lb) | 8.3 | 8.5 | 10.5 | 2.24 | 0.00 | | TENV |

| | |
|-----------------------------|-------------------------|
| Construction | TTN |
| Voltage | 230 V |
| Frequency | 60 Hz |
| Design | A |
| LR Code letter | N |
| Service Factor | 1.15 |
| Temp Rise @ FL | 35 °C |
| Duty | CONT |
| Ambient | 40 °C |
| Elevation | 1,000 feet |
| Rotor/Shaft wk ² | 0.12 LB-Ft ² |
| Ref Wdg | Z1496 R2 |
| Sound Pressure @ 1M | 62 dBA |
| VFD Rating | NONE |
| Outline Dwg | OL117699 |
| Conn. Diag | A-EE7300-1E |
| Additional Specifications: | |
| 0 | |
| EQUIV CKT (OHMS / PHASE) | |
| R1 | R2 |
| 2.6480 | 1.8920 |
| X1 | X2 |
| 3.3940 | 3.6880 |
| Xm | 104.0330 |

