

PRODUCT INFORMATION PACKET



Model No: 116348.00

Catalog No: 116348.00

Premium Duck™ General Purpose Motor, 1 HP, 1 Ph, 60 Hz, 115/230 V, 1800 RPM, 56HC Frame, TENV

Operational at 115/208-230 V @60HZ



Regal and Leeson are trademarks of Regal Rexnord Corporation or one of its affiliated companies.

©2023 Regal Rexnord Corporation, All Rights Reserved. MC017097E



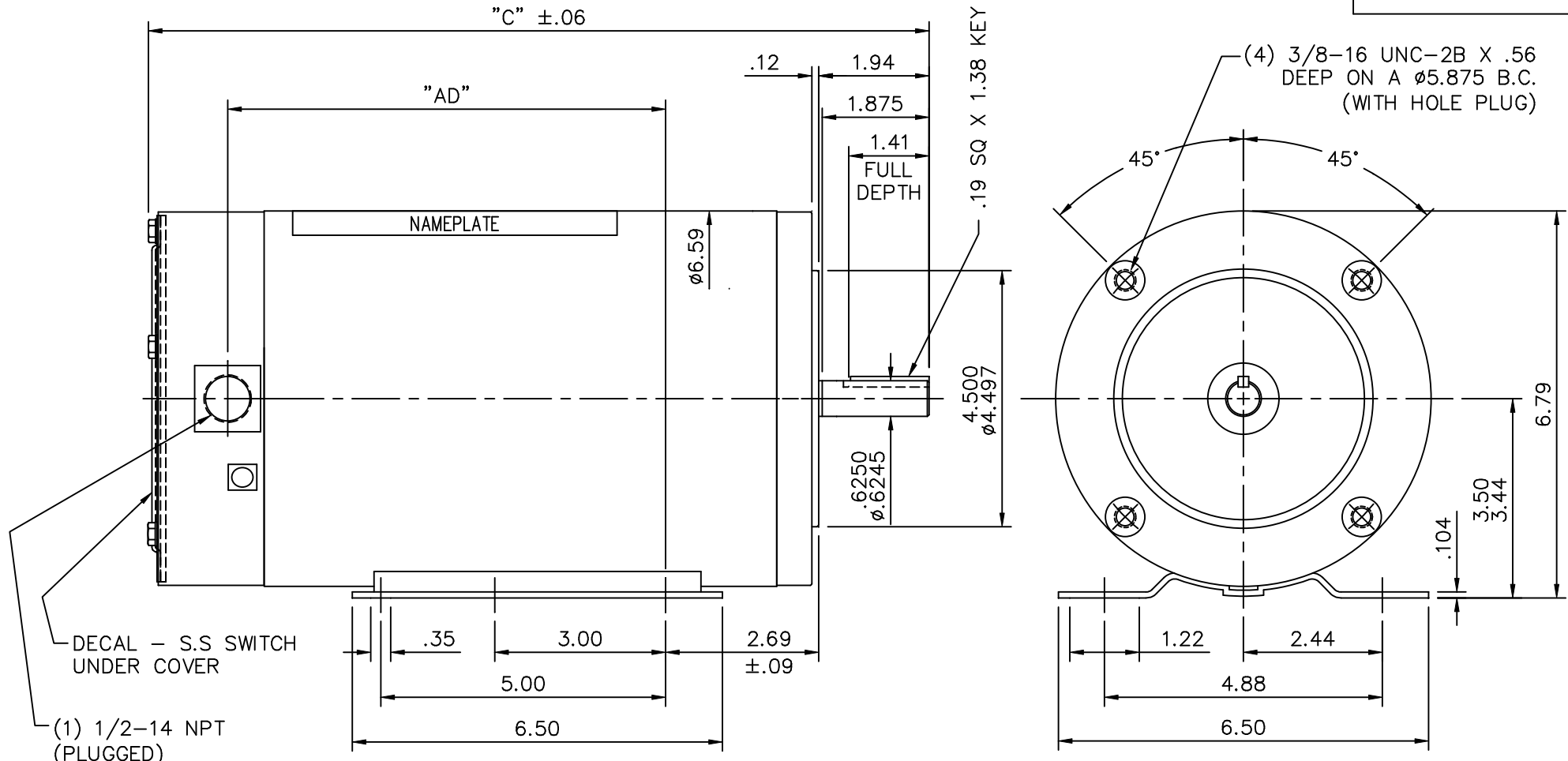


Nameplate Specifications

Phase	1	Output HP	1 Hp
Output KW	0.75 kW	Voltage	115/230 V
Speed	1725 rpm	Service Factor	1.15
Frame	56HC	Enclosure	Totally Enclosed Non Ventilated
Thermal Protection	No Protection	Efficiency	82.5 %
Ambient Temperature	40 °C	Frequency	60 Hz
Current	9.0/4.5 A	Power Factor	88
Duty	Continuous	Insulation Class	F
Design Code	N	KVA Code	K
Drive End Bearing Size	6205	Opp Drive End Bearing Size	6203
UL	Recognized	CSA	Y
CE	N	IP Code	55
Number of Speeds	1		

Technical Specifications

Electrical Type	Capacitor Start Capacitor Run	Starting Method	Across The Line
Poles	4	Rotation	Selective Counterclockwise
Resistance Main	0 Ohms	Mounting	Rigid Base
Motor Orientation	Horizontal	Drive End Bearing	Ball
Opp Drive End Bearing	Ball	Frame Material	Stainless Steel
Shaft Type	NEMA 56	Overall Length	13.70 in
Frame Length	9.00 in	Shaft Diameter	0.625 in
Shaft Extension	1.88 in	Assembly/Box Mounting	F1 ONLY
Connection Drawing	005259.03	Outline Drawing	034991-900



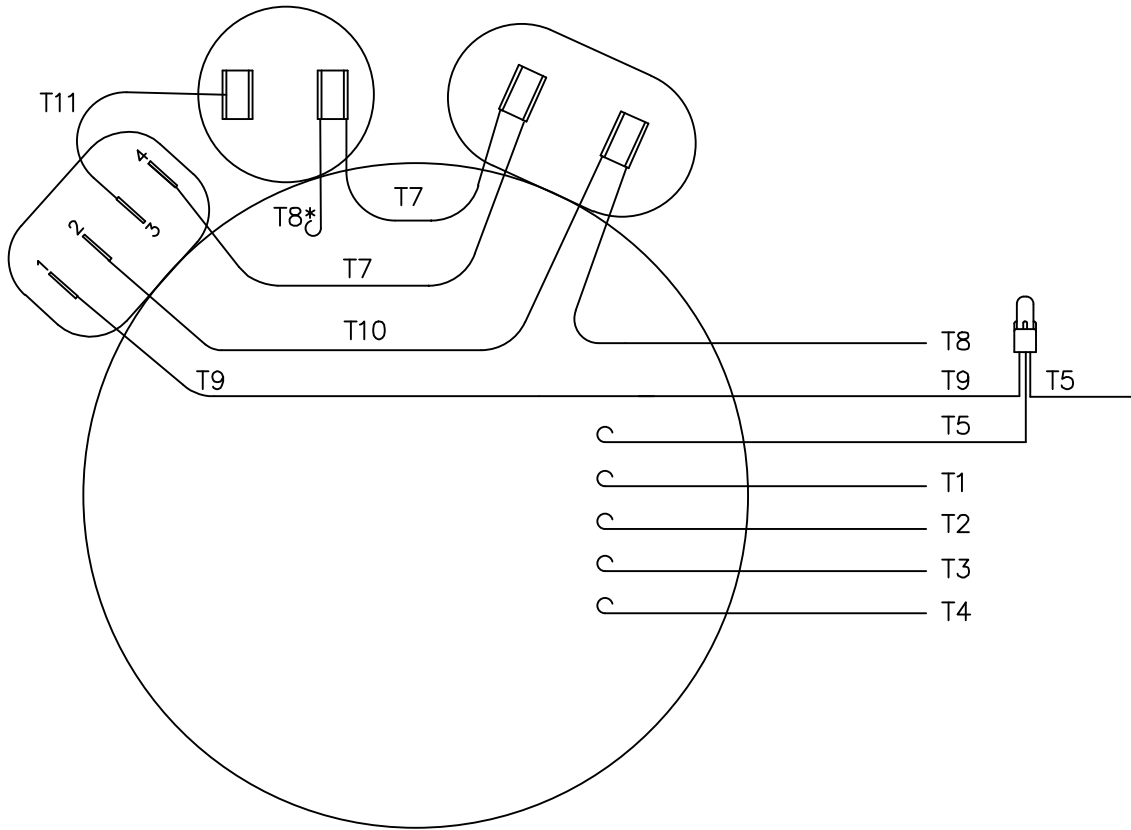
SPECIAL FEATURES:
 VITON CONDUIT BOX & COVER GASKETS
 VITON O-RINGS IN ENDBELL RABBETS
 VITON SHAFT SEAL
 BREATHER PLUGS IN L.E. ENDBELL (B.I.C.B.)
 ALL STAINLESS STEEL CONSTRUCTION

DASH NO.	"C"	"AD"
750	12.20	6.19
800	12.70	6.69
850	13.20	7.19
900	13.70	7.69

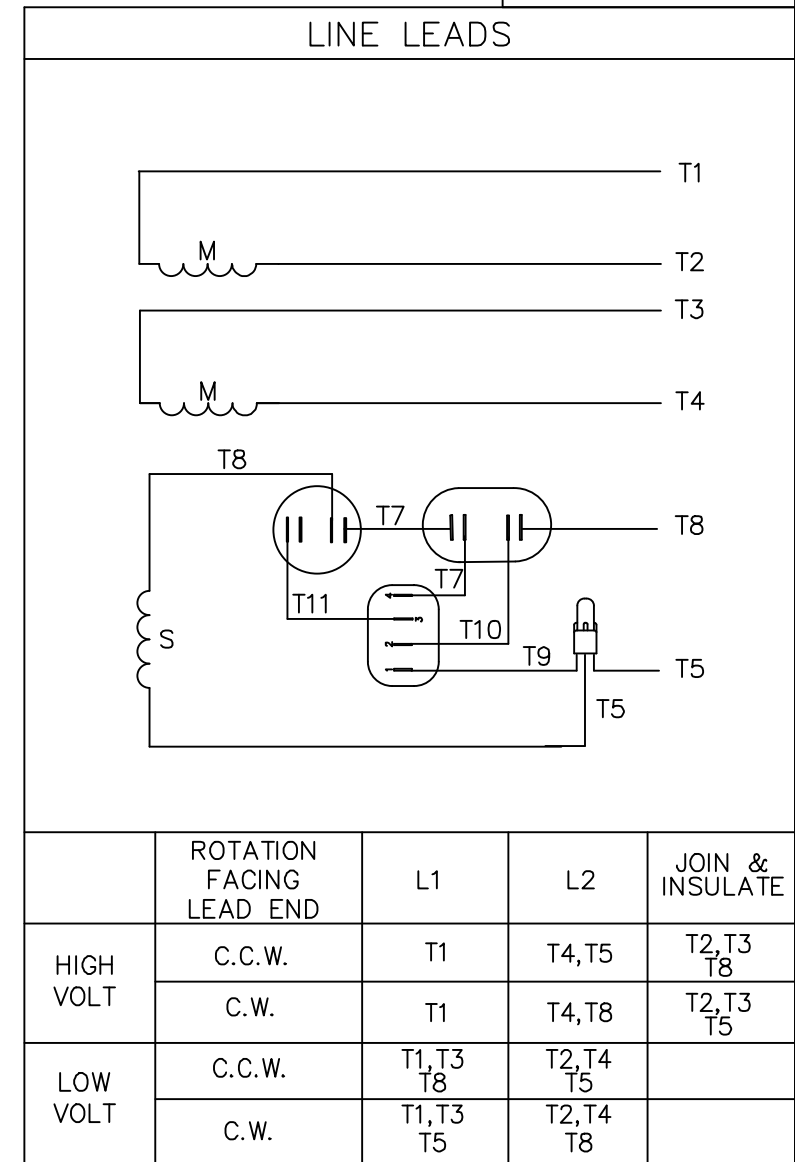
MAXIMUM FACE RUNOUT TO BE .004 T.I.R.
 MAXIMUM PILOT ECCENTRICITY .004 T.I.R.
 PERMISSIBLE SHAFT RUNOUT .002 T.I.R.

				LEESON		ELECTRIC MOTORS GEARMOTORS AND DRIVES		DRAWN LST 3/18/03			
				TITLE		OUTLINE- 56HC FRAME TENV- RIGID "C"		CHK			
				MAT'L.		STAINLESS STEEL DUCK		APPD			
				FINISH				SCALE 3=8			
02 ADDED HOLE PLUGS PER ECO 03-617			LST 8/7/03		.XXX ±.005		REF PR020350				
01 REVISED NAMEPLATE			JJK 7/24/03		.XXXX ±.0005		FMF 116348				
NO. REVISION			BY & DATE		CHK ANG ±1/2"		PREV				
THIS DRAWING IN DESIGN AND DETAIL IS OUR PROPERTY AND MUST NOT BE USED EXCEPT IN CONNECTION WITH OUR WORK ALL RIGHTS OF DESIGN AND INVENTION ARE RESERVED THIS IS AN ELECTRONICALLY GENERATED DOCUMENT - DO NOT SCALE THIS PRINT				RFP		CAD FILE 034991		SIZE A		DRAWING NO. 034991	REV. 02
				DIST							

VIEW FROM OUTSIDE OF MOTOR AT SWITCH END.



*THIS LEAD MAY BE WHITE



				TOLERANCES UNLESS OTHERWISE SPECIFIED		LEESON ELECTRIC CORPORATION						
				DECIMALS								
				.00	± .01	DRAWN KMM 12/16/94		TITLE		EXTERNAL WIRING DIAGRAM TYPE "K" W/O PROTECTOR		
				.000	± .005	CH'K'D.						
02	REDRAWN, UPDATED TO CURRENT STANDARDS		DBT	12/18/97	.0000	± .0005	APPR.		MAT'L. W/SOLID STATE SWITCH DECAL - 004012			
NO.	REVISION		BY	DATE	FRACTIONS	± 1/64	SCALE 1=1					
THIS DRAWING IN DESIGN AND DETAIL IS OUR PROPERTY AND MUST NOT BE USED EXCEPT IN CONNECTION WITH OUR WORK ALL RIGHTS OF DESIGN AND INVENTION ARE RESERVED					ANGLES	± 1/2°	REF.	005259-02	FINISH	DTS	SIZE	DRAWING NO.
					INCH/MM		FMF	114559	FLUID	A	005259-03	



CERTIFICATION DATA SHEET

**1051 CHEYENNE AVE.
GRAFTON, WI 53024
PH. 262-377-8810**

CONN. DIAGRAM: 005259.03

CATALOG #: 116348.00

OUTLINE: 034991-900

MOUNTING: F1 ONLY

WINDING #: K634306 NR 3 A

TYPICAL MOTOR PERFORMANCE DATA

HP	kW	SYNC. RPM	F.L. RPM	FRAME	ENCLOSURE	KVA CODE	DESIGN
1	0.75	1800	1725	56HC	TENV	K	N

PH	Hz	VOLTS	AMPS	START TYPE	DUTY	INSL	S.F.	AMB°C
1	60	115/208-230	9/5-4.5	ACROSS THE LINE	CONTINUOUS	F4	1.15	40

FULL LOAD EFF:	82.5	3/4 LOAD EFF:	78.8	1/2 LOAD EFF:	75	GTD. EFF		ELEC. TYPE	
FULL LOAD PF:	88	3/4 LOAD PF:	84.9	1/2 LOAD PF:	78.7	80	CAP START CAP RUN		

F.L. TORQUE	LOCKED ROTOR AMPS	L.R. TORQUE	B.D. TORQUE	F.L. RISE°C
3 LB-FT	70 / 35	8.2 LB-FT 273 %	8 LB-FT 267 %	85

SOUND PRESSURE @ 3 FT.	SOUND POWER	ROTOR WK^2	MAX. WK^2	SAFE STALL TIME	STARTS / HOUR	APPROX. MOTOR WGT
60 dBA	70 dBA	0.14 LB-FT^2	0 LB-FT^2	0 SEC.	0	49 LBS.

***** SUPPLEMENTAL INFORMATION *****

DE BRACKET TYPE	ODE BRACKET TYPE	MOUNT TYPE	ORIENTATION	SEVERE DUTY	HAZARDOUS LOCATION	DRIP COVER	SCREENS	PAINT
C-FACE	STANDARD	RIGID	HORIZONTAL	FALSE	NONE	FALSE	NONE	NO PAINT

BEARINGS		GREASE	SHAFT TYPE	SPECIAL DE	SPECIAL ODE	SHAFT MATERIAL	FRAME MATERIAL
DE	ODE						
BALL	BALL	POLYREX EM	STANDARD 56	NONE	NONE	303 STAINLESS (C-501)	ROLLED STEEL
6205	6203						

THERMO-PROTECTORS				THERMISTORS	CONTROL	SPACE HEATERS
THERMOSTATS	PROTECTORS	WDG RTDs	BRG RTDs			
NONE	NOT	NONE	NONE	NONE	FALSE	NONE VOLTS

*
N
O
T
E
S

INVERTER TORQUE: NONE
INV. HP SPEED RANGE: NONE
ENCODER: NONE
NONE NONE
NONE NONE PPR
BRAKE: NONE NONE
NONE P/N NONE
NONE NONE
NONE FT-LB NONE V NONE Hz



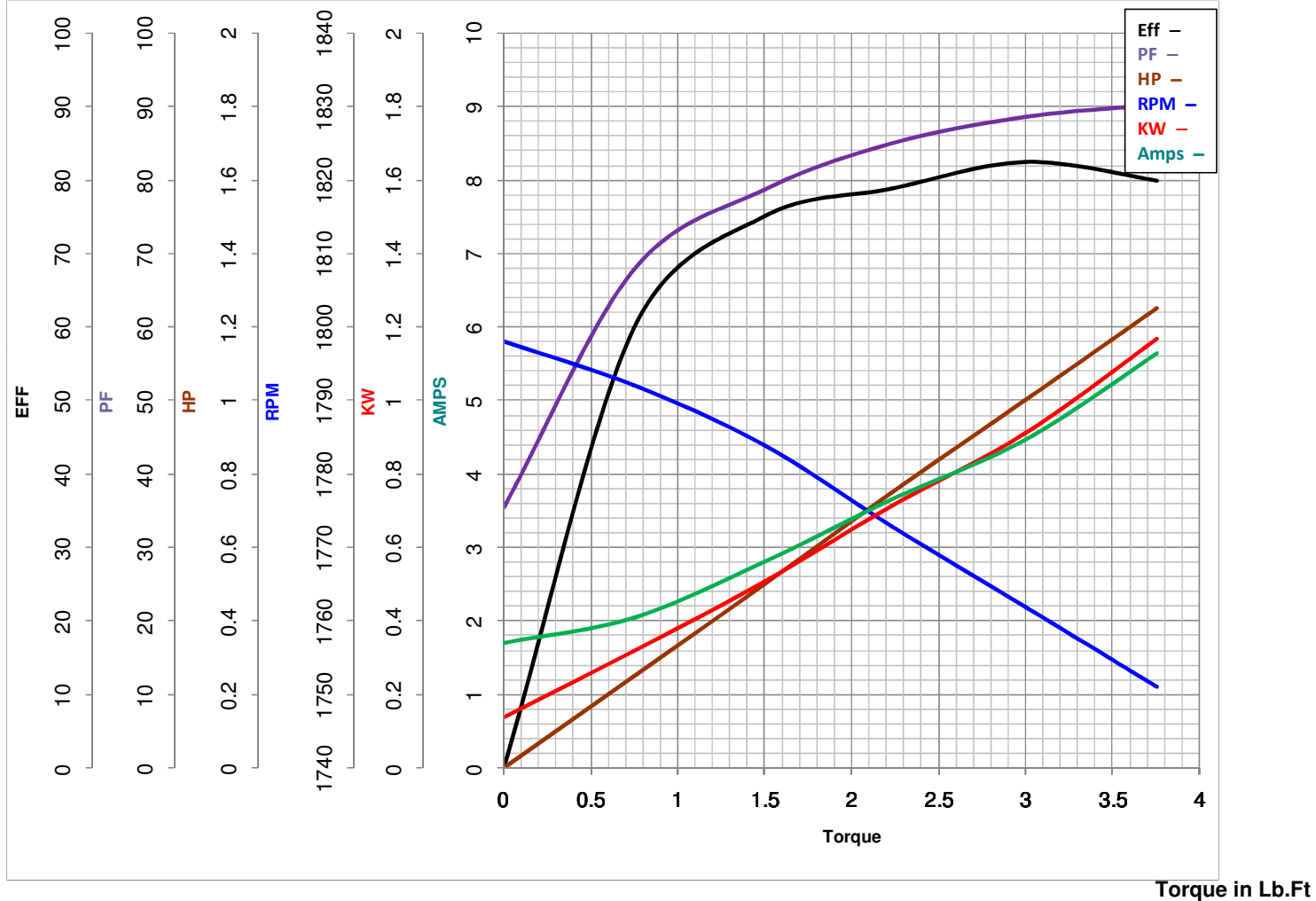
LEESON ELECTRIC CORPORATION
 TYPICAL PERFORMANCE CURVE for AC MOTOR

Model No 116348.00

Curve at 230 Volts HP 1.00 PHASE 1
60 HZ
1 HP VOLTS 115/208-230

Catalog No 116348.00

HZ 60 RPM 1725



FL TORQUE	<u>3</u>	Lb.Ft	FL AMPS	<u>9/5-4.5</u>	
BD TORQUE	<u>8.0</u>	Lb.Ft	PU TORQUE	<u>7.5</u>	Lb.Ft
LR TORQUE	<u>8.2</u>	Lb.Ft	LR AMPS	<u>35</u>	
WINDING	K634306-3		Date	5/2/2018	