

# PRODUCT INFORMATION PACKET



Model No: 111954.00

Catalog No: 111954.00

Definite Purpose Motor, 0.75 & 0.33 HP, 1 Ph, 60 & 60 Hz, 115 & 115 V, 1800 & 1800 RPM, 56H Frame,  
DP



Regal and Leeson are trademarks of Regal Rexnord Corporation or one of its affiliated companies.

©2023 Regal Rexnord Corporation, All Rights Reserved. MC017097E



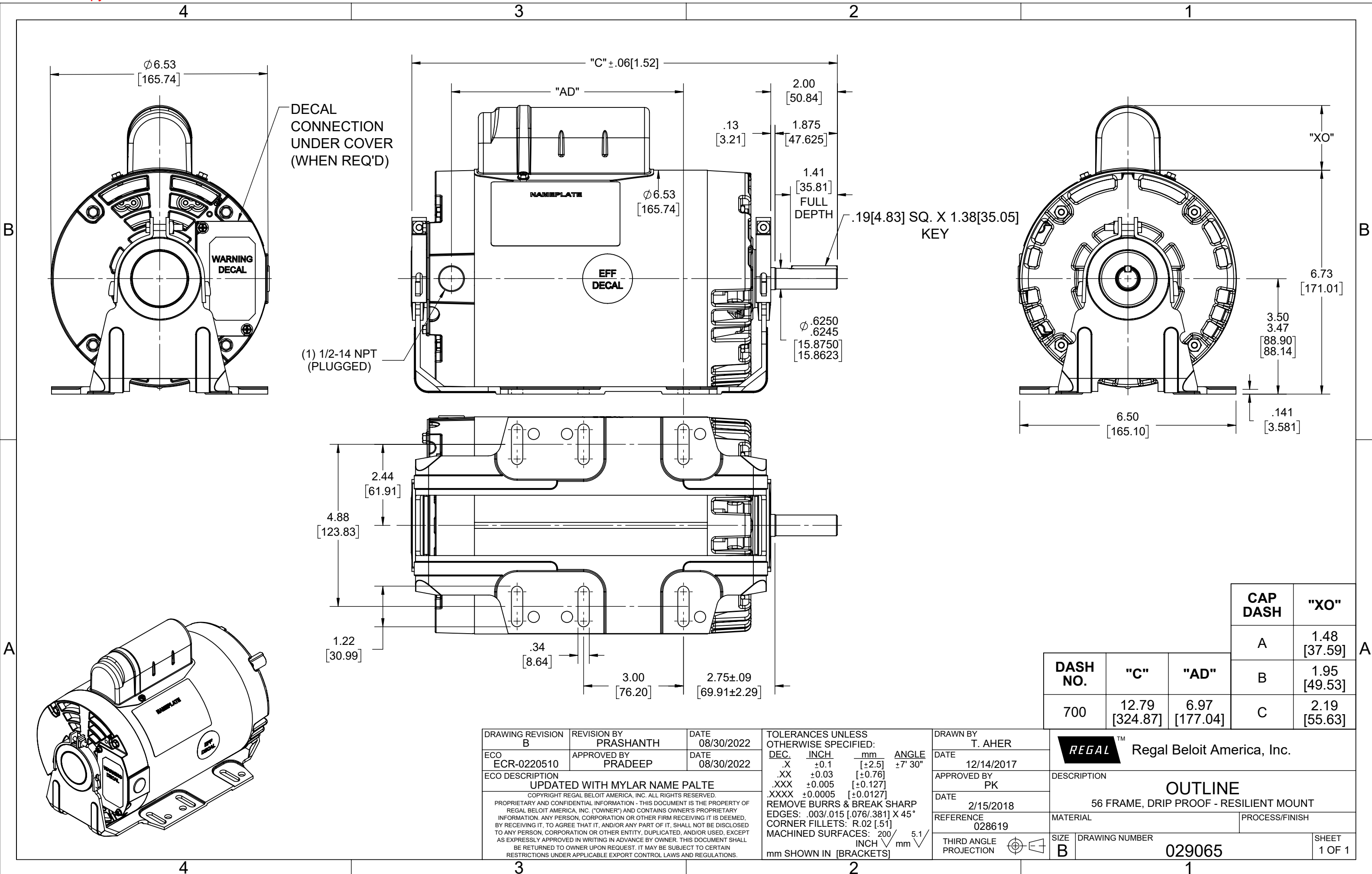


### Nameplate Specifications

Phase	1	Output HP	0.75 & 0.33 Hp
Output KW	0.56 & 0.25 kW	Voltage	115 & 115 V
Speed	1725 & 1140 rpm	Service Factor	1.0 & 1.0
Frame	56H	Enclosure	Drip Proof
Thermal Protection	No Protection	Efficiency	64.9 & 55.5 %
Ambient Temperature	40 °C	Frequency	60 & 60 Hz
Current	11.6 & 7 A	Power Factor	66.2
Duty	Continuous	Insulation Class	B
Design Code	2VT	KVA Code	H
Drive End Bearing Size	6203	Opp Drive End Bearing Size	6203
UL	Recognized	CSA	Y
CE	N	IP Code	22
Number of Speeds	2		

### Technical Specifications

Electrical Type	Capacitor Start Capacitor Run	Starting Method	Across The Line
Poles	4//6	Rotation	Selective Counterclockwise
Resistance Main	0 Ohms	Mounting	Resilient Base
Motor Orientation	Horizontal	Drive End Bearing	Ball
Opp Drive End Bearing	Ball	Frame Material	Rolled Steel
Shaft Type	NEMA 56	Overall Length	17.23 in
Frame Length	7.00 in	Shaft Diameter	0.625 in
Shaft Extension	1.88 in	Assembly/Box Mounting	F1 ONLY
Connection Drawing	005192.01	Outline Drawing	029065-700B



DECAL CONNECTION UNDER COVER (WHEN REQ'D)

WARNING DECAL

NAMEPLATE

EFF DECAL

.19 [4.83] SQ. X 1.38 [35.05] KEY

(1) 1/2-14 NPT (PLUGGED)

	CAP DASH	"XO"
A	A	1.48 [37.59]
B	B	1.95 [49.53]
C	C	2.19 [55.63]

DASH NO.	"C"	"AD"
700	12.79 [324.87]	6.97 [177.04]

DRAWING REVISION B	REVISION BY PRASHANTH	DATE 08/30/2022
ECO ECR-0220510	APPROVED BY PRADEEP	DATE 08/30/2022
ECO DESCRIPTION UPDATED WITH MYLAR NAME PALTE		
<small>COPYRIGHT REGAL BELOIT AMERICA, INC. ALL RIGHTS RESERVED. PROPRIETARY AND CONFIDENTIAL INFORMATION - THIS DOCUMENT IS THE PROPERTY OF REGAL BELOIT AMERICA, INC. ("OWNER") AND CONTAINS OWNER'S PROPRIETARY INFORMATION. ANY PERSON, CORPORATION OR OTHER FIRM RECEIVING IT IS DEEMED, BY RECEIVING IT, TO AGREE THAT IT, AND/OR ANY PART OF IT, SHALL NOT BE DISCLOSED TO ANY PERSON, CORPORATION OR OTHER ENTITY, DUPLICATED, AND/OR USED, EXCEPT AS EXPRESSLY APPROVED IN WRITING IN ADVANCE BY OWNER. THIS DOCUMENT SHALL BE RETURNED TO OWNER UPON REQUEST. IT MAY BE SUBJECT TO CERTAIN RESTRICTIONS UNDER APPLICABLE EXPORT CONTROL LAWS AND REGULATIONS.</small>		

TOLERANCES UNLESS OTHERWISE SPECIFIED:

DEC.	INCH	mm	ANGLE
.X	±0.1	[±2.5]	±7° 30"
.XX	±0.03	[±0.76]	
.XXX	±0.005	[±0.127]	
.XXXX	±0.0005	[±0.0127]	

REMOVE BURRS & BREAK SHARP EDGES: .003/.015 [0.076/.381] X 45°  
 CORNER FILLETS: R.02 [.51]  
 MACHINED SURFACES: 200 INCH/mm 5.1  
 mm SHOWN IN [BRACKETS]

DRAWN BY T. AHER
DATE 12/14/2017
APPROVED BY PK
DATE 2/15/2018
REFERENCE 028619
THIRD ANGLE PROJECTION

<b>REGAL</b> ™ Regal Beloit America, Inc.	
DESCRIPTION 56 FRAME, DRIP PROOF - RESILIENT MOUNT	
MATERIAL	PROCESS/FINISH
SIZE B	DRAWING NUMBER 029065
SHEET 1 OF 1	





**CERTIFICATION DATA SHEET**

**1051 CHEYENNE AVE.  
GRAFTON, WI 53024  
PH. 262-377-8810**

**CATALOG #:** 111954.00

**CONN. DIAGRAM:** 005192.01

**OUTLINE:** 029065-700B

**MOUNTING:** F1 ONLY

**WINDING #:** C63(4-6)18 1

**TYPICAL MOTOR PERFORMANCE DATA**

HP	kW	SYNC. RPM	F.L. RPM	FRAME	ENCLOSURE	KVA CODE	DESIGN
3/4&1/3	0.56&0.25	1200	1725&1140	56H	DP	H	2VT

PH	Hz	VOLTS	AMPS	START TYPE	DUTY	INSL	S.F.	AMB°C
1	60/60	115&115	11.6&7	ACROSS THE LINE	CONTINUOUS	B4	1.0/1.0	40

FULL LOAD EFF:	64.9&55.5	3/4 LOAD EFF:	53.4	1/2 LOAD EFF:	46.6	GTD. EFF		ELEC. TYPE	
FULL LOAD PF:	66.2&59.7	3/4 LOAD PF:	51.6	1/2 LOAD PF:	42.4	59.5	CAP START CAP RUN		

F.L. TORQUE	LOCKED ROTOR AMPS	L.R. TORQUE	B.D. TORQUE	F.L. RISE°C
24 OZ-FT	60	84 OZ-FT 350 %	137.3 OZ-FT 572 %	66

SOUND PRESSURE @ 3 FT.	SOUND POWER	ROTOR WK^2	MAX. WK^2	SAFE STALL TIME	STARTS / HOUR	APPROX. MOTOR WGT
- dBA	- dBA	0 LB-FT^2	- LB-FT^2	- SEC.	-	41 LBS.

**\*\*\* SUPPLEMENTAL INFORMATION \*\*\***

DE BRACKET TYPE	ODE BRACKET TYPE	MOUNT TYPE	ORIENTATION	SEVERE DUTY	HAZARDOUS LOCATION	DRIP COVER	SCREENS	PAINT
STANDARD	STANDARD	RESILIENT BASE	HORIZONTAL	FALSE	NONE	FALSE	NONE	BLUE - LEESON (ENAMEL)

BEARINGS		GREASE	SHAFT TYPE	SPECIAL DE	SPECIAL ODE	SHAFT MATERIAL	FRAME MATERIAL
DE	ODE						
BALL 6203	BALL 6203	POLYREX EM	STANDARD 56	NONE	NONE	1144 STRESSPROOF (C-223)	ROLLED STEEL

THERMO-PROTECTORS				THERMISTORS	CONTROL	SPACE HEATERS
THERMOSTATS	PROTECTORS	WDG RTDs	BRG RTDs			
NONE	NOT	NONE	NONE	NONE	FALSE	NONE VOLTS

\*  
N  
O  
T  
E

<b>INVERTER TORQUE:</b> NONE
<b>INV. HP SPEED RANGE:</b> NONE
<b>ENCODER:</b> NONE
NONE NONE
NONE NONE PPR
<b>BRAKE:</b> NONE NONE
NONE P/N NONE
NONE NONE
NONE FT-LB NONE V NONE Hz

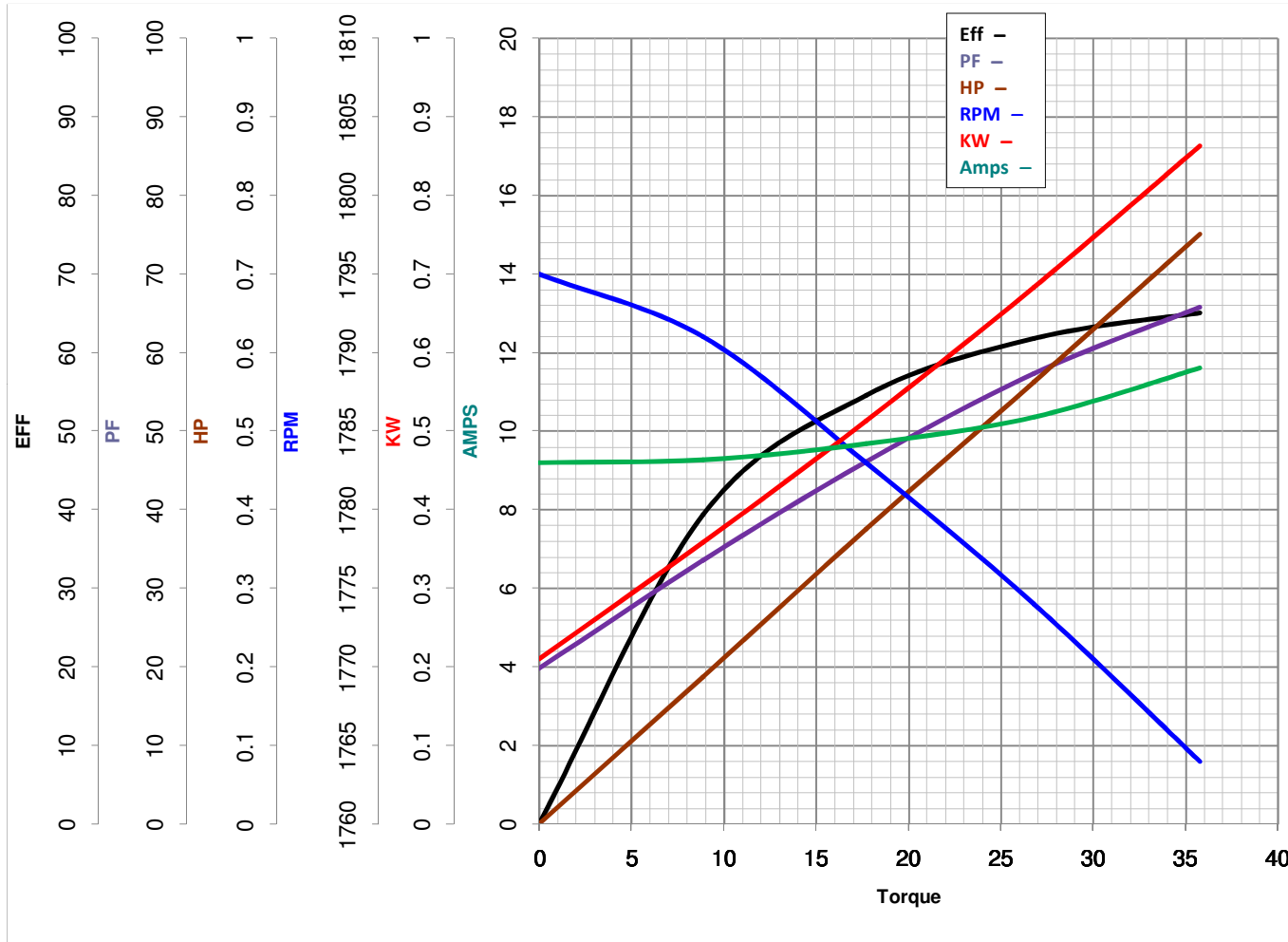


**LEESON ELECTRIC CORPORATION**  
TYPICAL PERFORMANCE CURVE for AC MOTOR

Model No 111954.00

Catalog No 111954.00

Curve at 230 Volts      HP 0.76      PHASE 1  
60 HZ  
0.75 HP      VOLTS 115  
   HZ 60      RPM 1725



Torque in OZ-FT

FL TORQUE 35.8 OZ-FT  
 BD TORQUE 91.0 OZ-FT  
 LR TORQUE 84 OZ-FT

FL AMPS 11.6  
 PU TORQUE 63.5 OZ-FT  
 LR AMPS 60

WINDING C63(4-6)18-1

Date 3/27/2018