

# PRODUCT INFORMATION PACKET



Model No: 111944.00

Catalog No: 111944.00

Explosion Proof Motor, 0.33 & 0.33 HP, 3 Ph, 60 & 50 Hz, 208-230/460 & 190/380 V, 3600 & 3000 RPM,  
56C Frame, EPNV



Regal and Leeson are trademarks of Regal Rexnord Corporation or one of its affiliated companies.

©2023 Regal Rexnord Corporation, All Rights Reserved. MC017097E



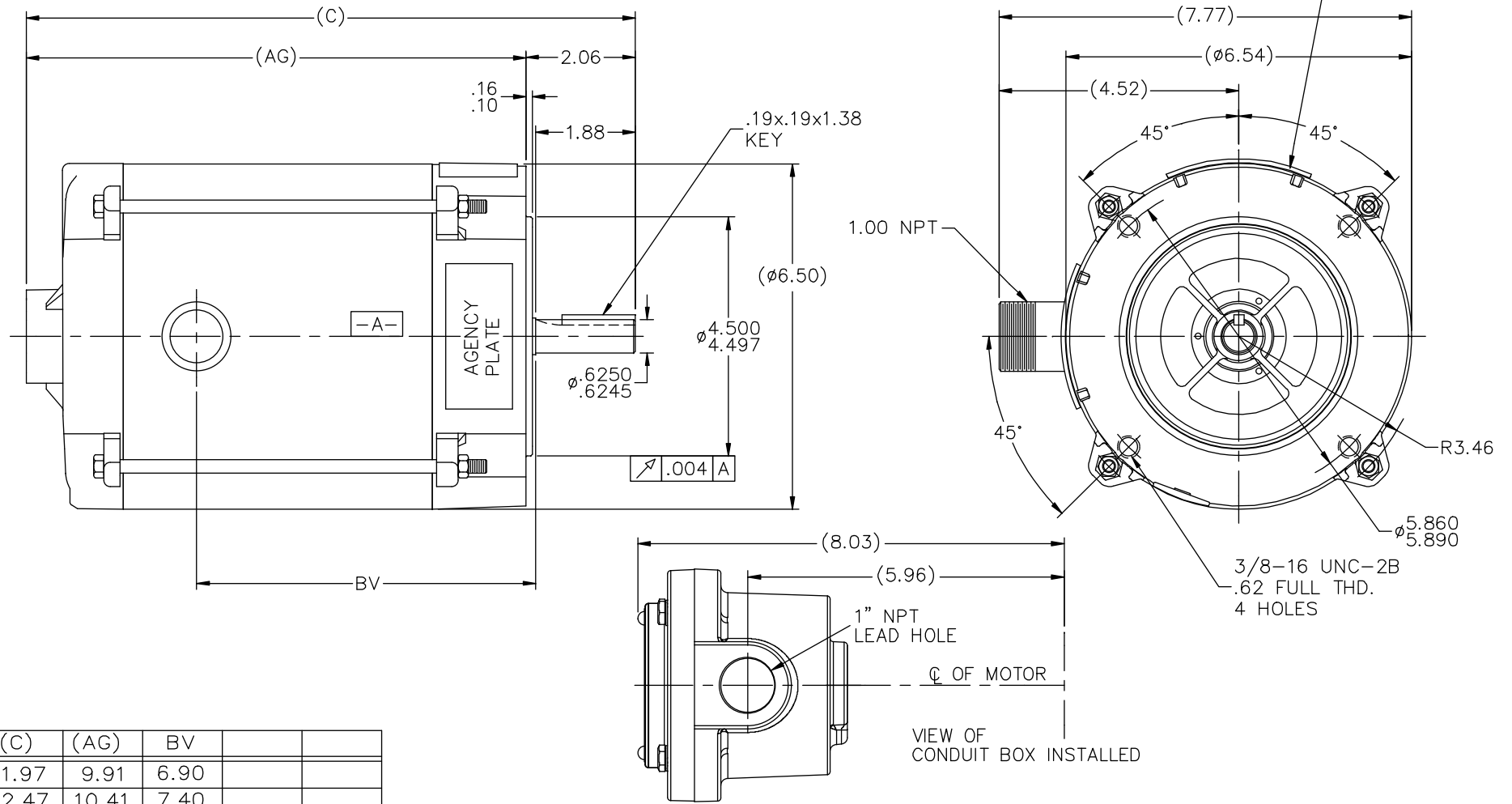


### Nameplate Specifications

Phase	<b>3</b>	Output HP	<b>0.33 &amp; 0.33 Hp</b>
Output KW	<b>0.25 &amp; 0.25 kW</b>	Voltage	<b>208-230/460 &amp; 190/380 V</b>
Speed	<b>3450 &amp; 2850 rpm</b>	Service Factor	<b>1.0 &amp; 1.0</b>
Frame	<b>56C</b>	Enclosure	<b>Explosion Proof Non Ventilated</b>
Thermal Protection	<b>Automatic</b>	Efficiency	<b>78.5 &amp; 77 %</b>
Ambient Temperature	<b>40 °C</b>	Frequency	<b>60 &amp; 50 Hz</b>
Current	<b>1.1-1.1/.65 &amp; 1.3/.65 A</b>	Power Factor	<b>73.5</b>
Duty	<b>Continuous</b>	Insulation Class	<b>B</b>
Design Code	<b>B</b>	KVA Code	<b>M</b>
Drive End Bearing Size	<b>6203</b>	Opp Drive End Bearing Size	<b>6203</b>
UL	<b>UL Listed And CSA Certified</b>	CSA	<b>Y</b>
CE	<b>N</b>	IP Code	<b>54</b>
Number of Speeds	<b>1</b>	Hazardous Location	<b>DIV 1 EXP PROOF CL I GR CD CL II GR FG T3C</b>

### Technical Specifications

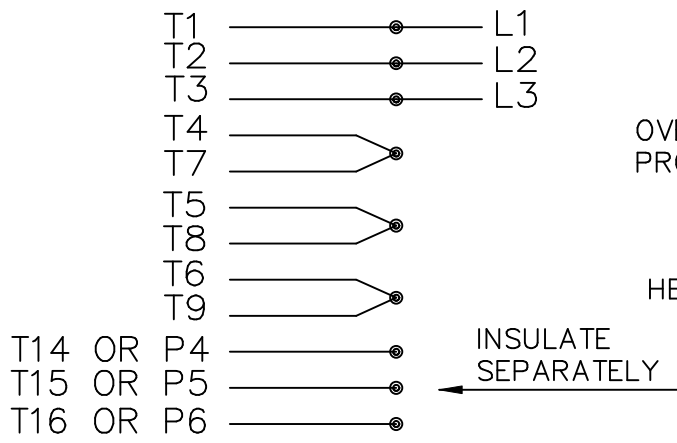
Electrical Type	<b>Squirrel Cage Induction Run</b>	Starting Method	<b>Across The Line</b>
Poles	<b>2</b>	Rotation	<b>Reversible</b>
Resistance Main	<b>0 Ohms</b>	Mounting	<b>Round</b>
Motor Orientation	<b>Horizontal</b>	Drive End Bearing	<b>Ball</b>
Opp Drive End Bearing	<b>Ball</b>	Frame Material	<b>Rolled Steel</b>
Shaft Type	<b>NEMA 56</b>	Overall Length	<b>11.97 in</b>
Frame Length	<b>6.31 in</b>	Shaft Diameter	<b>0.625 in</b>
Shaft Extension	<b>1.88 in</b>	Assembly/Box Mounting	<b>F1 ONLY</b>
Connection Drawing	<b>EE7335-LE</b>	Outline Drawing	<b>104197LE-631</b>



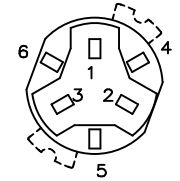
DASH	(C)	(AG)	BV
631	11.97	9.91	6.90
681	12.47	10.41	7.40
731	12.97	10.91	7.90
781	13.47	11.41	8.40
831	13.97	11.91	8.90
881	14.47	12.41	9.40
931	14.97	12.91	9.90
981	15.47	13.41	10.40

		TOLERANCES UNLESS SPECIFIED		LEESON	ELECTRIC MOTORS GEARMOTORS AND DRIVES	DRAWN RJW 06-22-2007	
DEC.	INCHES	CHK	ML				
.X	±.1	APPD	GK	TITLE OUTLINE - 'C' FACE 56 FR. - EXP. PR.		SCALE 17=32	
.XX	±.03	REF		MATERIAL		PREV	
.XXX	±.005	NO.		FINISH		REV.	
.XXXX	±.0005	REVISION		RFP 06-22-2007		SIZE	DRAWING NO. PAGE OF
ANG ±7'30"		BY & DATE		CAD FILE 104197LE		B	104197LE 02
THIS DRAWING IN DESIGN AND DETAIL IS OUR PROPERTY AND MUST NOT BE USED EXCEPT IN CONNECTION WITH OUR WORK ALL RIGHTS OF DESIGN AND INVENTION ARE RESERVED THIS IS AN ELECTRONICALLY GENERATED DOCUMENT - DO NOT SCALE THIS PRINT				DIST WP			

HIGH VOLTAGE CONNECTIONS

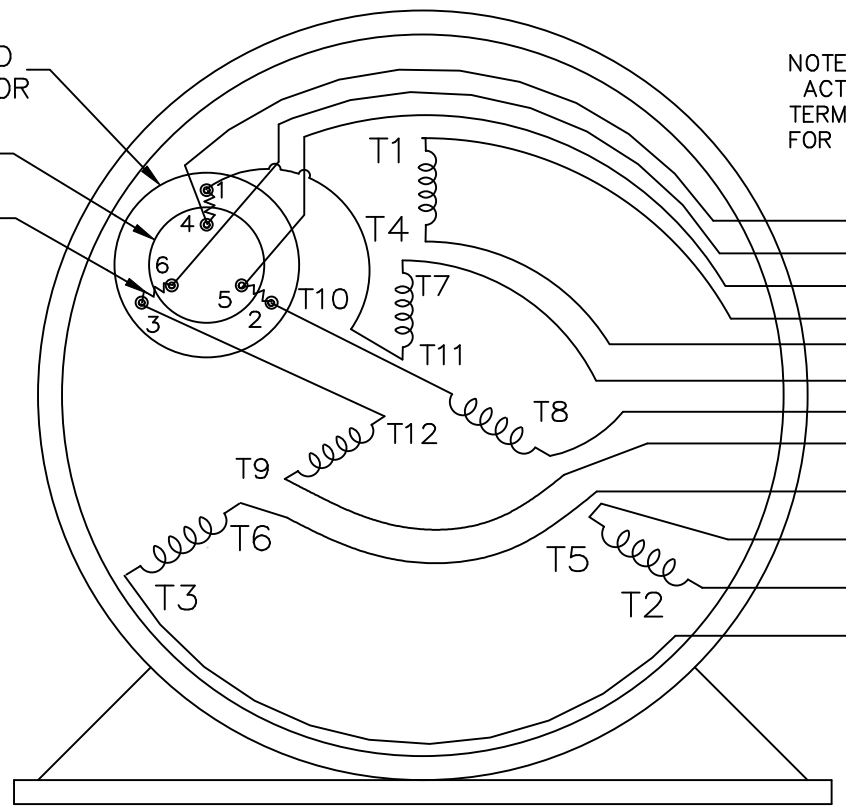


THREE PHASE - DUAL VOLTAGE MOTOR WITH OVERLOAD PROTECTOR



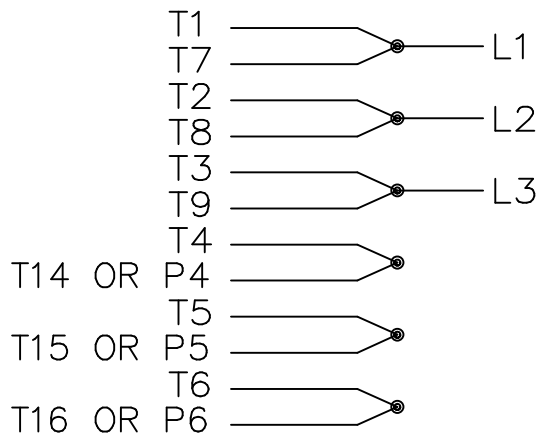
NOTE:  
ACTUAL PROTECTORS  
TERMINAL LOCATIONS  
FOR LEAD CONNECTIONS

OVERLOAD PROTECTOR  
DISC  
HEATER




VIEW OF TERMINAL END

LOW VOLTAGE CONNECTIONS



T2K  
T4D  
T6AN

				TOLERANCES UNLESS SPECIFIED		 ELECTRIC MOTORS GEARMOTORS AND DRIVES	DRAWN NJS 04-20-2005			
				DEC.	INCHES		CHK ML 04-20-2005			
				.X	± -		APPD MJS 04-20-2005			
				.XX	± -		SCALE			
				.XXX	± -		REF			
				.XXXX	± -	MAT'L.				
NO.	REVISION	BY & DATE	CHK	ANG	± -	FINISH	PREV			
THIS DRAWING IN DESIGN AND DETAIL IS OUR PROPERTY AND MUST NOT BE USED EXCEPT IN CONNECTION WITH OUR WORK ALL RIGHTS OF DESIGN AND INVENTION ARE RESERVED THIS IS AN ELECTRONICALLY GENERATED DOCUMENT - DO NOT SCALE THIS PRINT				RFP	04-20-2005	CAD FILE EE7335_LE	SIZE A	DRAWING NO. EE7335-LE	PAGE OF	REV.
				DIST	WP					



Data Sheet

Date: 1/18/2018

111944.00



Data @ **460 V**

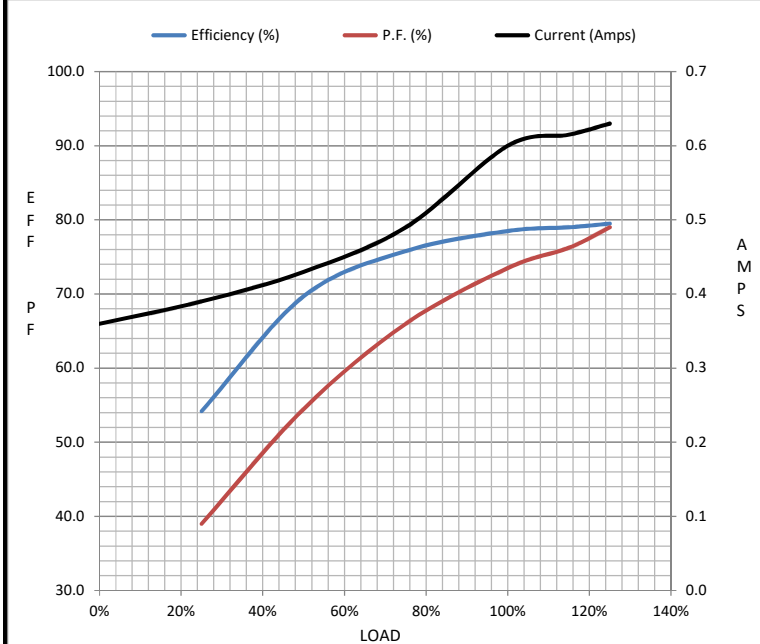
Motor Load Data

Load	0%	25%	50%	75%	100%	115%	125%	LR
Current (Amps)	0.36	0.39	0.43	0.49	0.60	0.62	0.63	4.6
Torque (ft-lb)	0.00	32.3	64.7	97.1	130	2,385	162	406
RPM	3600	3580	3565	3548	3530	3,524	3515	0
Efficiency (%)		54.2	69.7	75.8	78.5	79.0	79.5	
P.F. (%)	23.5	39.0	54.5	66.0	73.5	76.3	79.0	0.0

Motor Speed Data

	LR	Pull-Up	BD	Rated	Idle
Speed (RPM)	0	200	2760	3530	3600
Current (Amps)	4.6	4.1	2.90	0.60	0.36
Torque (ft-lb)	406	391	618	130	0.00

Information Block				
HP	0.3			
Sync. RPM	3600			
Frame	56			
Enclosure	EPNV			
Construction	TTR			
Voltage	208-230/460#190/380 V			
Frequency	60 Hz			
Design	B			
LR Code letter	M			
Service Factor	1.15			
Temp Rise @ FL	35 °C			
Duty	CONT			
Ambient	40 °C			
Elevation	1,000 feet			
Rotor/Shaft wk <sup>2</sup>	0.02 Lb-Ft <sup>2</sup>			
Ref Wdg	ZT2158 NONE			
Sound Pressure @ 1M	999 dBA			
VFD Rating	NONE			
Outline Dwg	B-104197LE-631			
Conn. Diag	A-EE7335-LE			
Additional Specifications:				
0				
0				
EQUIV CKT (OHMS / PHASE)				
R1	R2	X1	X2	Xm
0.0000	0.0000	0.0000	0.0000	0.0000



Speed - Torque Curve

