

# PRODUCT INFORMATION PACKET



Model No: 103404.00

Catalog No: 103404.00

Premium Duck™ 0.50 HP General Purpose, 3 phase, 1800 RPM, 208-230/460 V, 71 Frame, TENV

Operational at 208-230/460 V @60HZ



Regal and LEESON are trademarks of Regal Rexnord Corporation or one of its affiliated companies.

©2025 Regal Rexnord Corporation, All Rights Reserved. MC017097E



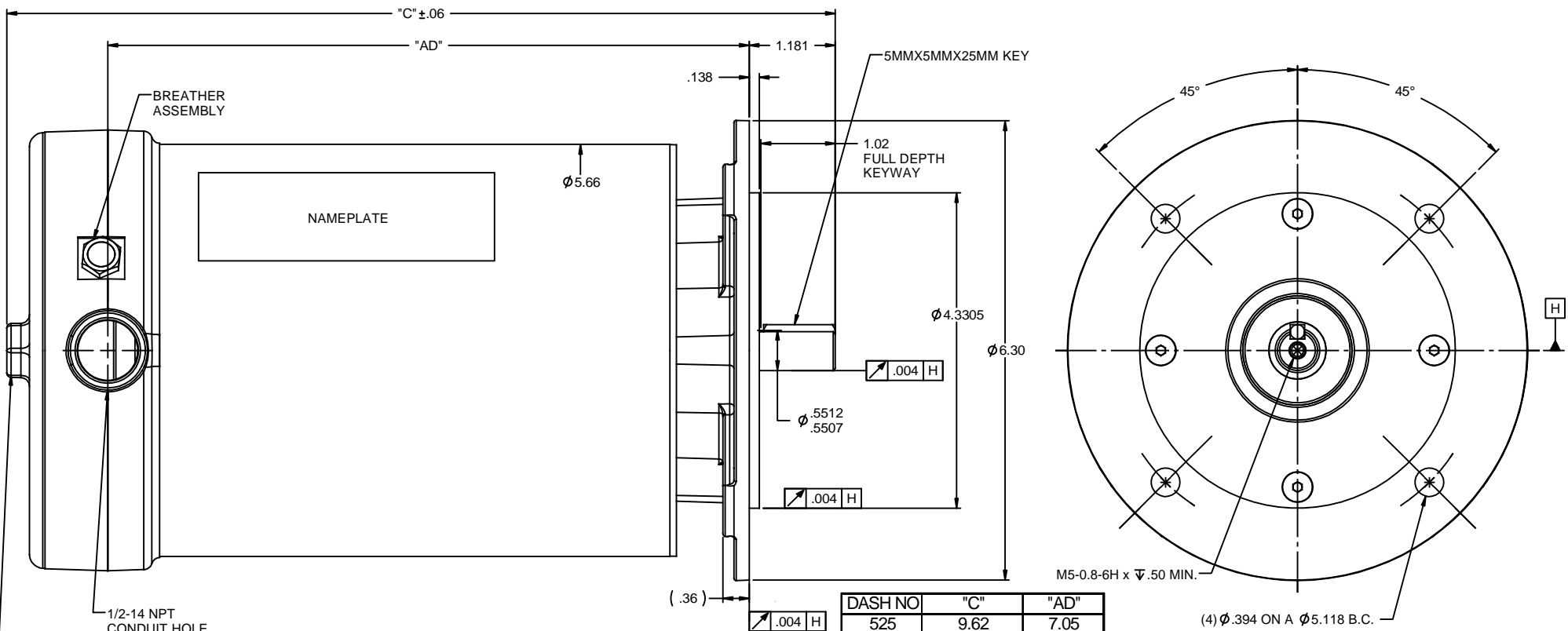


### Nameplate Specifications

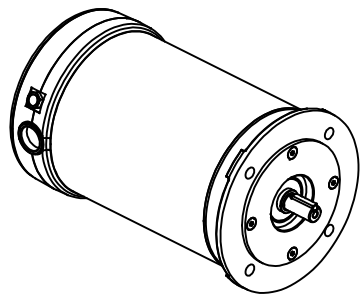
Phase	<b>3</b>	Output HP	<b>0.50 &amp; 0.50 Hp</b>
Output KW	<b>0.37 &amp; 0.37 kW</b>	Voltage	<b>230/460 &amp; 190/380 V</b>
Speed	<b>1725 &amp; 1425 rpm</b>	Service Factor	<b>1.15 &amp; 1.0</b>
Frame	<b>71</b>	Enclosure	<b>Totally Enclosed Non Ventilated</b>
Thermal Protection	<b>No Protection</b>	Efficiency	<b>76 &amp; 78.5 %</b>
Ambient Temperature	<b>40 °C</b>	Frequency	<b>60 &amp; 50 Hz</b>
Current	<b>1.8/0.9 &amp; 1.9/0.95 A</b>	Power Factor	<b>74</b>
Duty	<b>Continuous</b>	Insulation Class	<b>F</b>
Design Code	<b>B</b>	KVA Code	<b>K</b>
Drive End Bearing Size	<b>6204</b>	Opp Drive End Bearing Size	<b>6204</b>
UL	<b>Recognized</b>	CSA	<b>Y</b>
CE	<b>Y</b>	IP Code	<b>56</b>
Number of Speeds	<b>1</b>		

### Technical Specifications

Electrical Type	<b>Squirrel Cage Induction Run</b>	Starting Method	<b>Across The Line</b>
Poles	<b>4</b>	Rotation	<b>Reversible</b>
Resistance Main	<b>0 Ohms</b>	Mounting	<b>Round</b>
Motor Orientation	<b>Horizontal</b>	Drive End Bearing	<b>Ball</b>
Opp Drive End Bearing	<b>Ball</b>	Frame Material	<b>Stainless Steel</b>
Shaft Type	<b>IEC</b>	Overall Length	<b>11.62 in</b>
Frame Length	<b>7.25 in</b>	Shaft Diameter	<b>0.562 in</b>
Shaft Extension	<b>1.18 in</b>	Assembly/Box Mounting	<b>F1 ONLY</b>
Connection Drawing	<b>005010.01</b>	Outline Drawing	<b>031989-725</b>

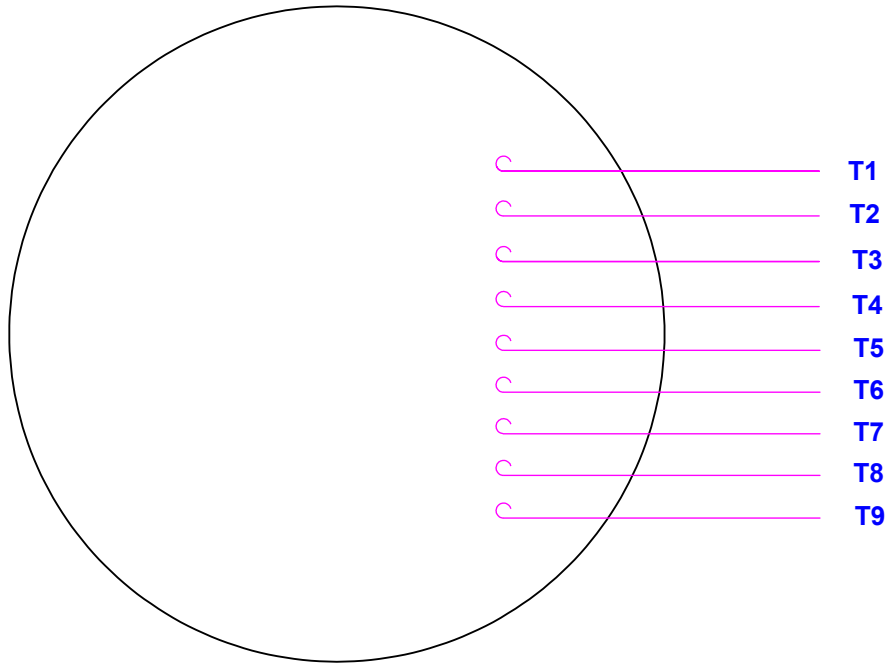


DASH NO	"C"	"AD"
525	9.62	7.05
550	9.87	7.30
575	10.12	7.55
600	10.37	7.80
625	10.62	8.05
650	10.87	8.30
675	11.12	8.55
700	11.37	8.80
725	11.62	9.05
750	11.87	9.30
775	12.12	9.55
800	12.37	9.80

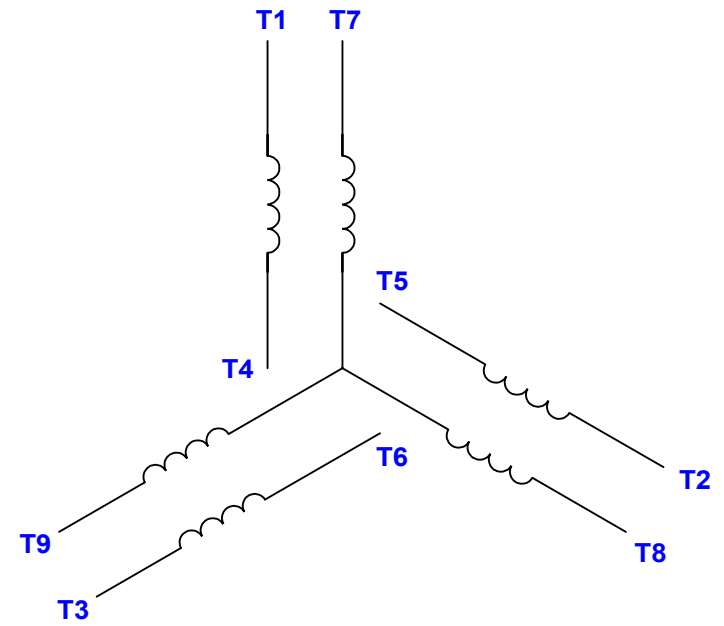


		TOLERANCES UNLESS SPECIFIED:		<b>LEESON</b> ELECTRIC MOTORS GEARMOTORS AND DRIVES		DRAWN VV 02/25/10
		DEC INCHES				CHK JJK 02/25/10
		X ±.1				APPR
		.XX ±.03		TITLE OUTLINE - S.S.		SCALE 3:4
		.XXX ±.005		IEC-71 B5 FLANGE		REF 042541&027543
01 ADDED THE BREATHER ASSEMBLY AND MODIFIED TABLE		VV 3/13/2010	XXXI ±.0005	MATL		FMF 103404
NO	REVISION	BY & DATE	CHK ANG ±1/2°	FINISH		PAGE 1 OF 1
	THIRD ANGLE PROJECTION		RFP	PREV	SIZE B	DRAWING NO 031989
			NETWORK FILE NAME 031989-layout			REV 01

VIEW FROM OUTSIDE OF MOTOR AT SWITCH END.



**LINE LEADS**



VOLTAGE	L1	L2	L3	JOIN & INSULATE
HIGH	T1	T2	T3	(T4, T7) (T5, T8) (T6, T9)
LOW	T1, T7	T2, T8	T3, T9	T4, T5, T6

RBC PROPRIETARY AND CONFIDENTIAL INFORMATION  
 This document is the property of REGAL BELOIT CORPORATION ("RBC") including its subsidiaries and divisions and contains proprietary information of RBC. This document is loaned on the express condition that neither it nor the information contained therein shall be disclosed to others without the express written consent of RBC, and that the information shall be used by the recipient only as approved expressly by RBC. This document shall be returned to RBC upon its request. This document may be subject to certain restrictions under U.S. export control laws and regulations.

				TOLERANCES UNLESS SPECIFIED		DRAWN RDW 04/12/02	
				DEC	INCHES	CHK	
				.X	±.1	APPR	
12	CHG FROM LEESON TO RRX TEMPLATE AS PER ECR-0237142	KVDG 09/19/24	DS	.XX	±.01	SCALE 1:1	
--	REDRAWN IN SOLIDWORKS	VJB 02/08/11		.XXX	±.005	REF FIG. 2-51	
11	ADD REV TO MATCH ORACLE	KJH 06/08/09	MDN	.XXX	±.0005	FMF	
NO	REVISION	BY & DATE	CHK	ANG	±1/2°	PAGE OF	
THIRD ANGLE PROJECTION			RFP	04/12/02	PREV	SIZE	DRAWING NO
			NETWORK FILE NAME		00501001	A	005010-01
							REV
							12

**Regal Rexnord** Regal Beloit America, Inc.

TITLE EXTERNAL WIRING DIAGRAM  
 3 PHASE W/O PROTECTOR

MAT'L DECAL - 004014



**1051 CHEYENNE AVE.  
GRAFTON, WI 53024  
PH. 262-377-8810**

**CERTIFICATION DATA SHEET**

**CONN. DIAGRAM:** 005010.01

**CATALOG #:** 103404.00

**OUTLINE:** 031989-725

**MOUNTING:** F1 ONLY

**WINDING #:** T55464 NR 3 A

**TYPICAL MOTOR PERFORMANCE DATA**

HP	kW	SYNC. RPM	F.L. RPM	FRAME	ENCLOSURE	KVA CODE	DESIGN
1/2&1/2	0.37&0.37	1800	1725&1425	71	TENV	K	B

PH	Hz	VOLTS	AMPS	START TYPE	DUTY	INSL	S.F.	AMB°C
3	60/50	208-230/460&190/380	1.9-1.8/0.9&1.9/0.95	ACROSS THE LINE	CONTINUOUS	F4	1.15/1.0	40

FULL LOAD EFF:	76&78.5	3/4 LOAD EFF:	73.8	1/2 LOAD EFF:	69.1	GTD. EFF		ELEC. TYPE	
FULL LOAD PF:	74&81.2	3/4 LOAD PF:	67	1/2 LOAD PF:	55.4	0		SQ CAGE IND RUN	

F.L. TORQUE	LOCKED ROTOR AMPS	L.R. TORQUE	B.D. TORQUE	F.L. RISE°C
24 OZ-FT	10.6 / 5.3	106 OZ-FT 442 %	100 OZ-FT 417 %	0

SOUND PRESSURE @ 3 FT.	SOUND POWER	ROTOR WK^2	MAX. WK^2	SAFE STALL TIME	STARTS / HOUR	APPROX. MOTOR WGT
0 dBA	10 dBA	0 LB-FT^2	0 LB-FT^2	10 SEC.	0	0 LBS.

**\*\*\* SUPPLEMENTAL INFORMATION \*\*\***

DE BRACKET TYPE	ODE BRACKET TYPE	MOUNT TYPE	ORIENTATION	SEVERE DUTY	HAZARDOUS LOCATION	DRIP COVER	SCREENS	PAINT
FF-FLANGE?130	STANDARD	ROUND	HORIZONTAL	FALSE	NONE	FALSE	NONE	NO PAINT

BEARINGS		GREASE	SHAFT TYPE	SPECIAL DE	SPECIAL ODE	SHAFT MATERIAL	FRAME MATERIAL
DE	ODE						
BALL	BALL	POLYREX EM	STANDARD IEC	NONE	NONE	303 STAINLESS (C-501)	STAINLESS STEEL
6204	6204						

THERMO-PROTECTORS				THERMISTORS	CONTROL	SPACE HEATERS
THERMOSTATS	PROTECTORS	WDG RTDs	BRG RTDs			
NONE	NOT	NONE	NONE	NONE	FALSE	NONE VOLTS

\*  
N  
O  
T  
E  
S

<b>INVERTER TORQUE:</b> NONE
<b>INV. HP SPEED RANGE:</b> NONE
<b>ENCODER:</b> NONE
NONE NONE
NONE NONE PPR
<b>BRAKE:</b> NONE NONE
NONE P/N NONE
NONE NONE
FT-LB NONE V NONE Hz



**LEESON ELECTRIC CORPORATION**  
 TYPICAL PERFORMANCE CURVE for AC MOTOR

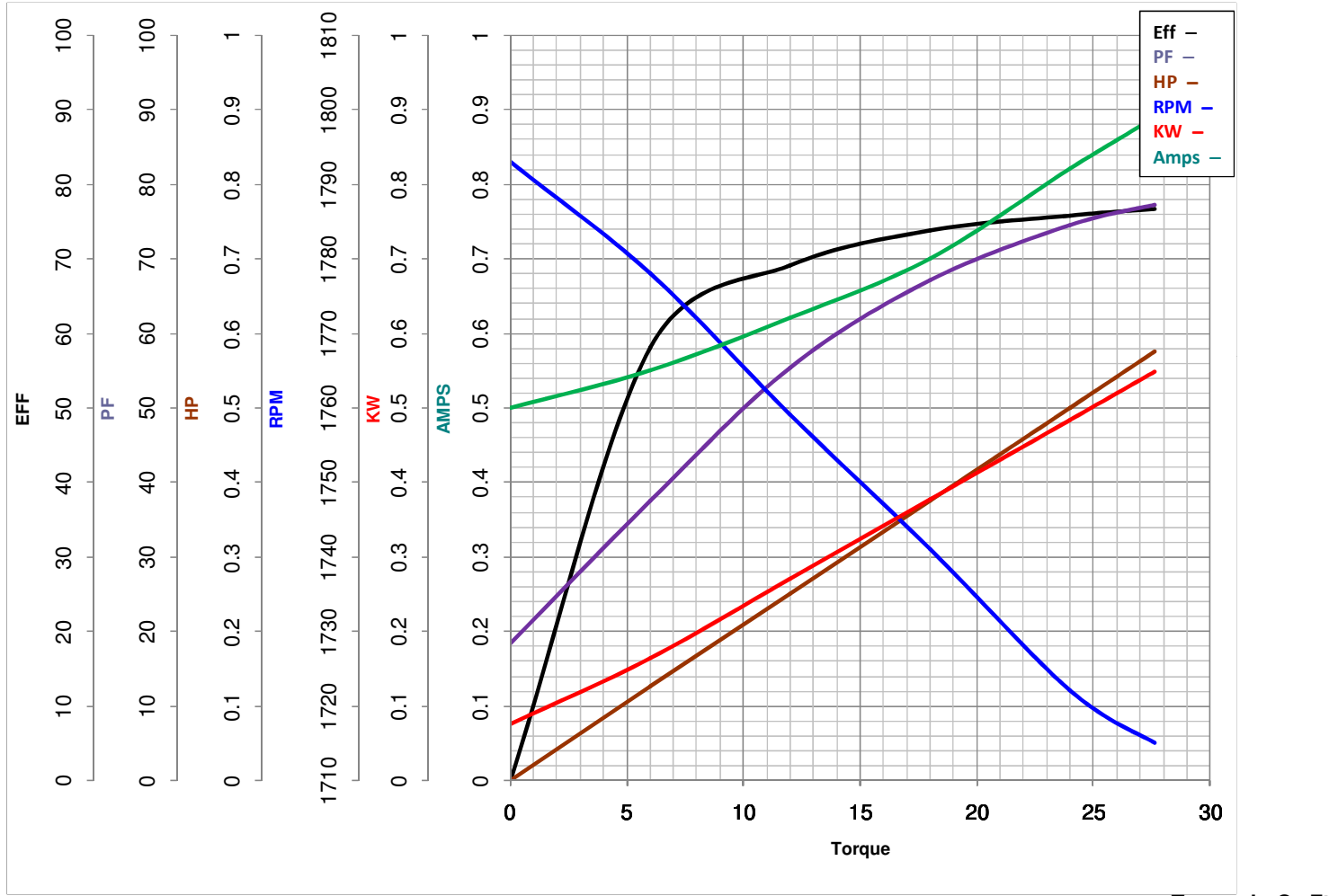
Model No 103404.00

Catalog No 103404.00

Curve at 460 Volts  
60 HZ  
0.5 HP

HP 0.5&0.5 PHASE 3  
 VOLTS 208-230/460&190/380

HZ 60&50 RPM 1725&1425



FL TORQUE	<u>24</u> Oz.Ft	FL AMPS	<u>1.9-1.8/0.9</u>
BD TORQUE	<u>100.0</u> Oz.Ft	PU TORQUE	<u>100.7</u> Oz.Ft
LR TORQUE	<u>106</u> Oz.Ft	LR AMPS	<u>5.3</u>
WINDING	T55464-3	Date	5/22/2018

## EC Declaration of Conformity

The undersigned representing  
the manufacturer:

Regal Beloit America  
1946 West Cook Road  
Fort Wayne, IN 46818

and the authorized representative  
established within the Community:

Regal Beloit Italy  
Via Modena, 18  
24040 Ciserano(BG) - Italy

are committed to providing customers with products that comply with applicable regulations and international protocols to which they are subject, including the requirements of the European Parliament Directive on the Harmonization of the laws relating to electrical equipment designed for use within certain voltage limits (2014/35/EU).

Regal Beloit America declares that the following product(s), to which this declaration relates, are in conformity with the relevant sections of the EC standards listed below.

This statement supersedes any statements previously issued pertaining to the product(s) listed below and is subject to change without notice.

Model No : 103404.00

(Model No. may contain prefix and/or suffix characters)

Catalog No : 103404.00

Rework No : N/A

Directives :

Low Voltage Directive 2014/35/EU

Harmonized Standards Used :

EN 60034-1: 2010 (IEC 60034-1: 2010)

EN 60034-5: 2001/A1:2007 (IEC 60034-5: 2000/A1:2006)

Authorized Representative:



Zach Stauffer  
Vice President, Engineering

Authorized Representative in the Community:



Stefano Casiraghi  
Technology Director, Engineering

Created on 07/08/2025

**CE 25**