

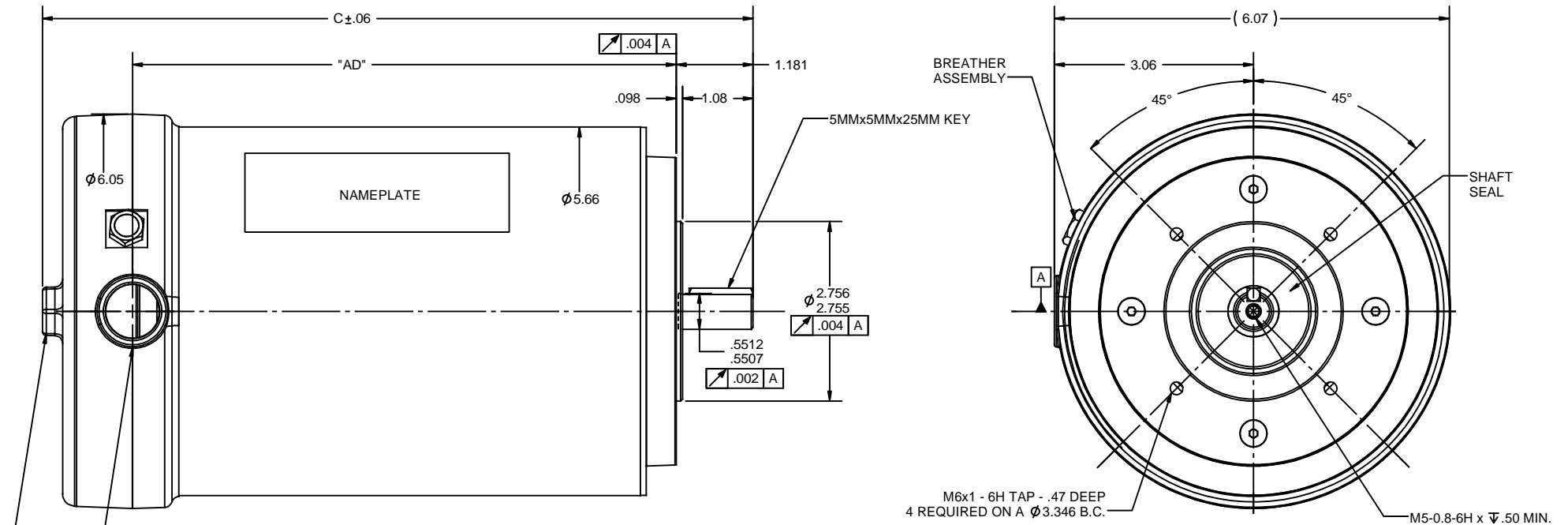


Nameplate Specifications

Output HP	0.33 Hp	Output KW	0.25 kW
Frequency	60 Hz	Voltage	208-230/460 V
Current	1.3-1.3/0.65 A	Speed	1725 rpm
Service Factor	1.15	Phase	3
Efficiency	72 %	Duty	Continuous
Insulation Class	F	Design Code	B
KVA Code	K	Frame	71
Enclosure	Totally Enclosed Non Ventilated	Overload Protector	No
Ambient Temperature	40 °C	Drive End Bearing Size	6204
Opp Drive End Bearing Size	6204	UL	Recognized
CSA	Y	CE	Y
IP Code	56		

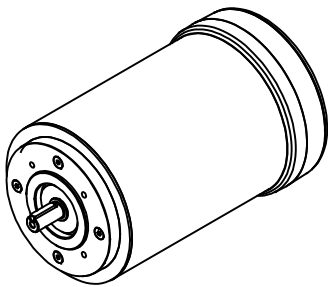
Technical Specifications

Electrical Type	Squirrel Cage Induction Run	Starting Method	Across The Line
Poles	4	Rotation	Reversible
Mounting	Round	Motor Orientation	HORIZONTAL
Drive End Bearing	BALL	Opp Drive End Bearing	BALL
Frame Material	Stainless Steel	Shaft Type	IEC
Overall Length	9.83 in	Frame Length	5.50 in
Shaft Diameter	0.562 in	Shaft Extension	1.18 in
Assembly/Box Mounting	F1 ONLY		
Outline Drawing	031993-550	Connection Diagram	005010-01



1/2-14 NPT CONDUIT HOLE
 3/4" HEX DRIVER FOR COVER REMOVAL

DASH NO.	"C"	"AD"
525	9.58	6.60
550	9.83	6.85
575	10.08	7.10
600	10.33	7.35
625	10.58	7.60
650	10.83	7.85
675	11.08	8.10
700	11.33	8.35
725	11.58	8.60
750	11.83	8.85
775	12.08	9.10
800	12.33	9.35



		TOLERANCES UNLESS SPECIFIED		ELECTRIC MOTORS GEARMOTORS AND DRIVES	DRAWN VV 12/25/09
		DEC	INCHES		CHK JJK 12/25/09
		X	±.1		APPR
		.XX	±.03	TITLE OUTLINE - STAINLESS STEEL	SCALE 1:4
02 ADDED BREATHER ASSEMBLY		VV	3/13/2010	IEC 71- B14 FRAME	REF 031730
01 ADDED ITEMS 725 TO 800		VV	3/3/2010	MATL	FMF 103418.00
NO	REVISION	BY & DATE	CHK ANG ±1/2°	FINISH	PAGE 1 OF 1
THIRD ANGLE PROJECTION			RFP	PREV	SIZE B DRAWING NO
			NETWORK FILE NAME 031993		031993 REV 02

005010-01

VIEW FROM OUTSIDE OF MOTOR AT SWITCH END.



VOLTAGE	L1	L2	L3	JOIN & INSULATE
HIGH	T1	T2	T3	(T4,T7) (T5,T8) (T6,T9)
LOW	T1,T7	T2,T8	T3,T9	T4,T5,T6

				TOLERANCES UNLESS SPECIFIED		Regal Beloit America, Inc.		DRAWN RDW 04/12/02				
				DEC.	INCHES			CHK				
				.X	±.1			APPD				
				.XX	±.01			SCALE 1=1				
				.XXX	±.005	TITLE		REF FIG.2-51				
A	UPDATED TO REGAL LOGO			SAJ	06/26/15	AJY	.XXXX	±.0005	MAT'L. DECAL - 004014	FMF		
NO.	REVISION			BY & DATE	CHK	ANG	±1/2"	FINISH	PREV			
THIS DRAWING IN DESIGN AND DETAIL IS OUR PROPERTY AND MUST NOT BE USED EXCEPT IN CONNECTION WITH OUR WORK ALL RIGHTS OF DESIGN AND INVENTION ARE RESERVED THIS IS AN ELECTRONICALLY GENERATED DOCUMENT - DO NOT SCALE THIS PRINT				RFP	04/12/02		CAD FILE	00501001		SIZE	DRAWING NO.	REV.
				DIST	BRF-NLV				A	005010-01		A



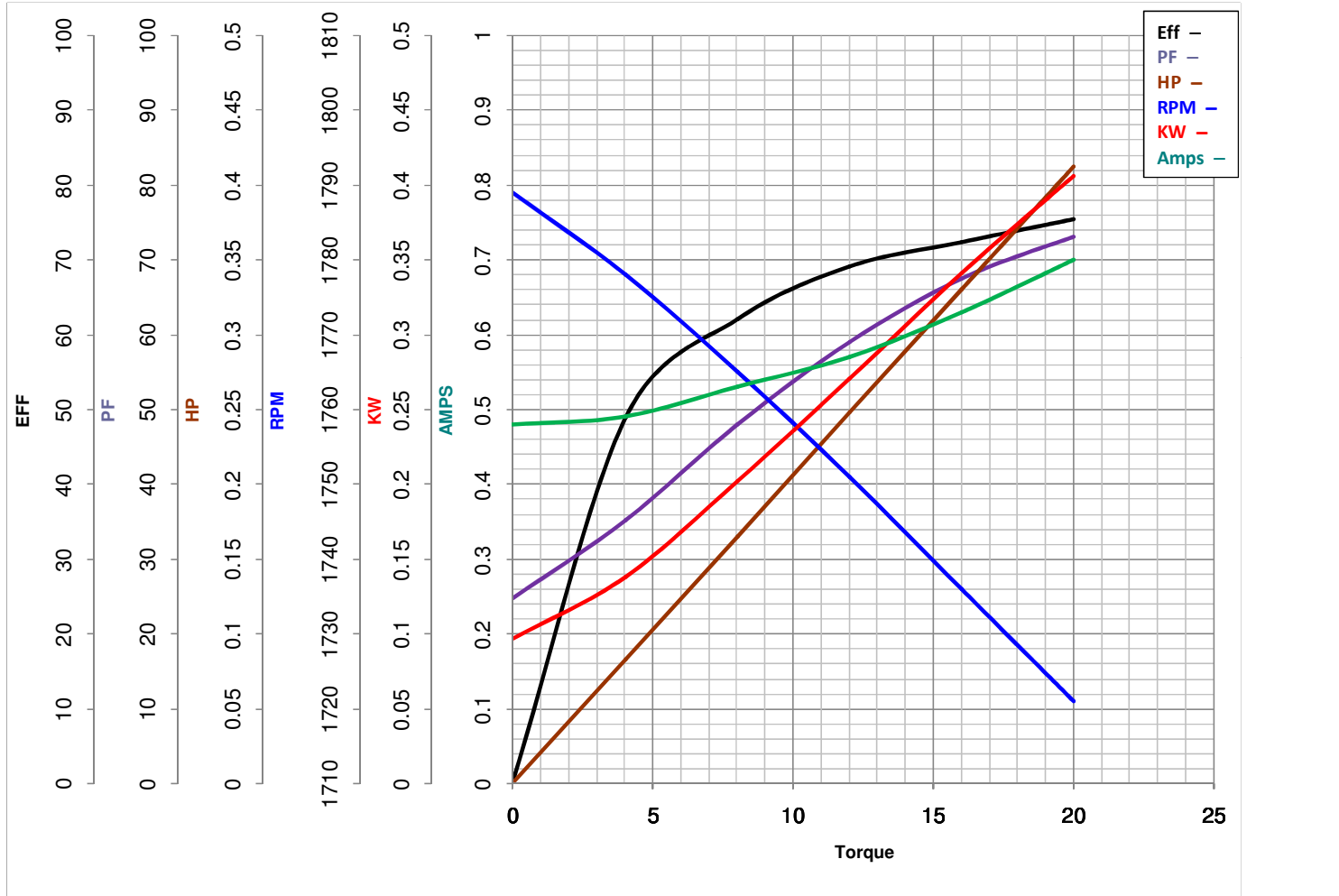
LEESON ELECTRIC CORPORATION
 TYPICAL PERFORMANCE CURVE for AC MOTOR

Model No 103395.00

Catalog No 103395.00

Curve at 460 Volts HP 0.33&0.33 PHASE 3
60 HZ
0.33 HP VOLTS 208-230/460&190/380

HZ 60&50 RPM 1725&1425



Torque in Oz.Ft

FL TORQUE 16 Oz.Ft
 BD TORQUE 79.6 Oz.Ft
 LR TORQUE 69.6 Oz.Ft

FL AMPS 1.3-1.3/.65
 PU TORQUE 68.7 Oz.Ft
 LR AMPS 4.4

WINDING T5548-3

Date 5/22/2018