

PRODUCT INFORMATION PACKET



Model No: 056T17D5812
Catalog No: 056T17D5812
2,1725,DP,56HZ,3/60/575

Regal and LEESON are trademarks of Regal Rexnord Corporation or one of its affiliated companies.
©2025 Regal Rexnord Corporation, All Rights Reserved. MC017097E





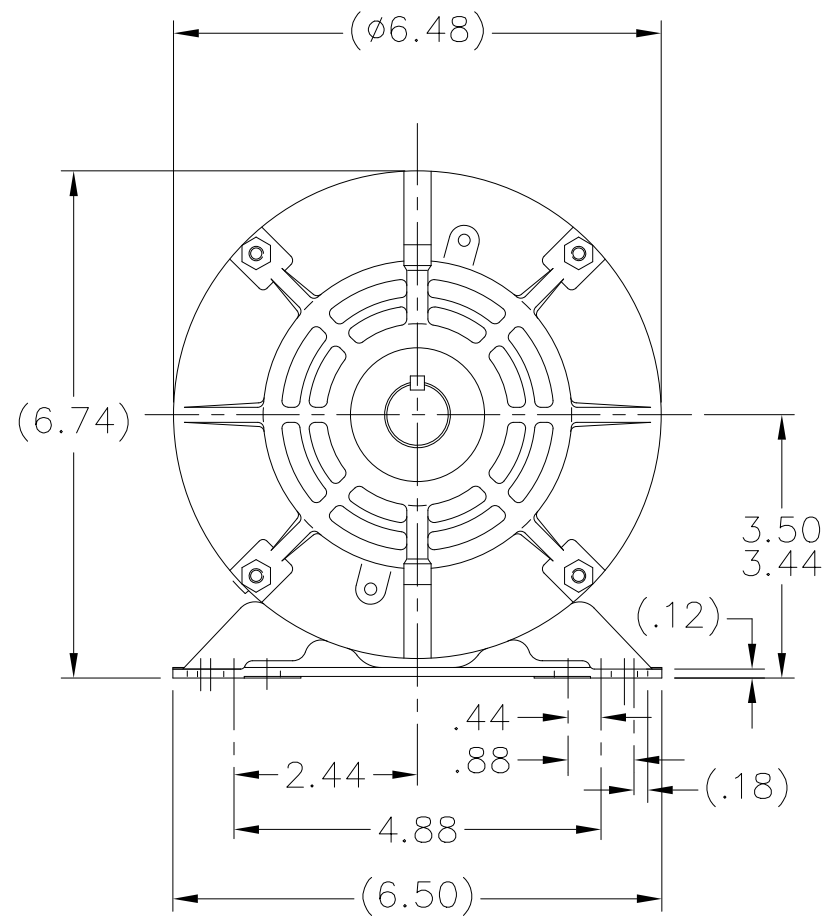
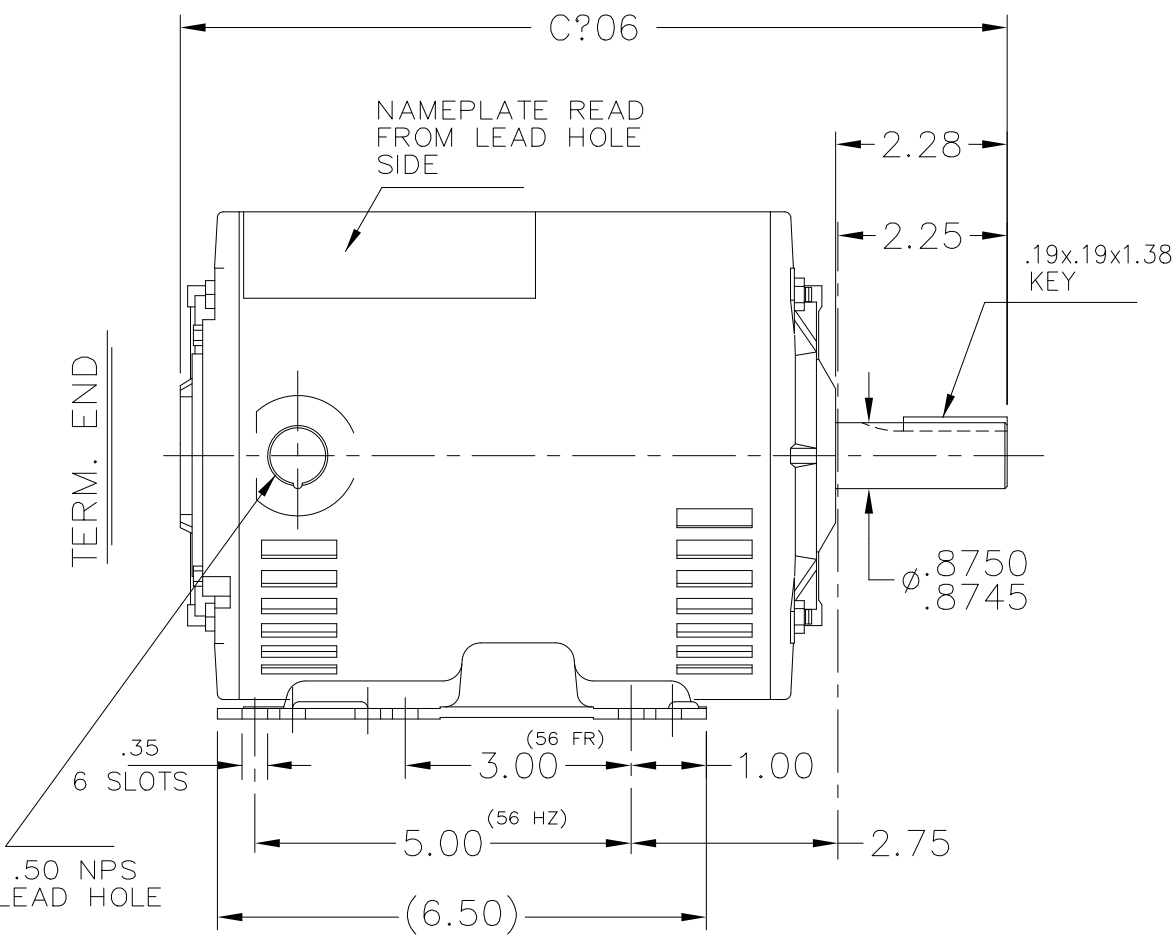
Nameplate Specifications

Phase	3	Output HP	2 Hp
Output KW	1.5 kW	Voltage	575 V
Speed	1725 rpm	Service Factor	1.15
Frame	56HZ-80	Enclosure	Drip Proof
Thermal Protection	Automatic	Efficiency	81.5 %
Ambient Temperature	40 °C	Frequency	60 Hz
Current	2.5 A	Power Factor	75.5
Duty	Continuous	Insulation Class	B
Design Code	B	KVA Code	K
Drive End Bearing Size	6205	Opp Drive End Bearing Size	6203
UL	Recognized	CSA	Y
CE	N	IP Code	12
Number of Speeds	1		

Technical Specifications

Electrical Type	Squirrel Cage Induction Run	Starting Method	Across The Line
Poles	4	Rotation	Reversible
Resistance Main	9.35 Ohms	Mounting	Rigid Base
Motor Orientation	Horizontal	Drive End Bearing	Ball
Opp Drive End Bearing	Ball	Frame Material	Rolled Steel
Shaft Type	Single Special Extension	Assembly/Box Mounting	F1 ONLY
Outline Drawing	A-100299-806	Connection Drawing	A-EE7335B

This is an uncontrolled document once printed or downloaded and is subject to change without notice. Date Created:07/28/2025



DASH	FR.	C	DASH	FR.	C
			856	56-85	12.49
706	56-70	10.99	906	" -90	12.99
756	" -75	11.49	956	" -95	13.49
806	" -80	11.99	1006	"-100	13.99

TOLERANCES UNLESS SPECIFIED	
DEC.	INCHES
.X	$\pm .1$
.XX	$\pm .02$
.XXX	$\pm .005$
.XXXX	$\pm .0005$
ANG	$\pm 7'30''$

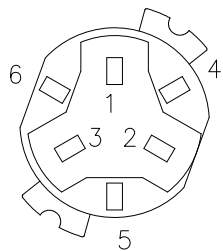
Regal Rexnord Regal Beloit America, Inc.

3	CHG FROM MARATHON TO REGAL REXNORD LOGO	KVDG 05-10-2024	DS	.XX	$\pm .02$	TITLE	OUTLINE	DRAWN	GK 6/22/1988
2	UPDATED DRAWING TO MATCH ORACLE REV ECO-0122833	AP 4/28/17		.XXX	$\pm .005$		140T - 56HZ DR.PR. - BB	CHK	ML 6/22/1988
1	NEW DRAWING	3496323	GK 6/22/1988		.XXXX	$\pm .0005$	MAT'L.	APPD	TH 6/24/1988
NO.	REVISION	BY & DATE	CHK	ANG	$\pm 7'30''$	FINISH		SCALE	3=8

THIS DRAWING IN DESIGN AND DETAIL IS OUR PROPERTY AND MUST NOT BE USED EXCEPT IN CONNECTION WITH OUR WORK ALL RIGHTS OF DESIGN AND INVENTION ARE RESERVED THIS IS AN ELECTRONICALLY GENERATED DOCUMENT - DO NOT SCALE THIS PRINT

RFP	CAD FILE	100299	SIZE	A	DRAWING NO.	100299	PAGE	OF	2	REV.	2
DIST											

SINGLE VOLTAGE – THREE PHASE WITH OVERLOAD PROTECTOR



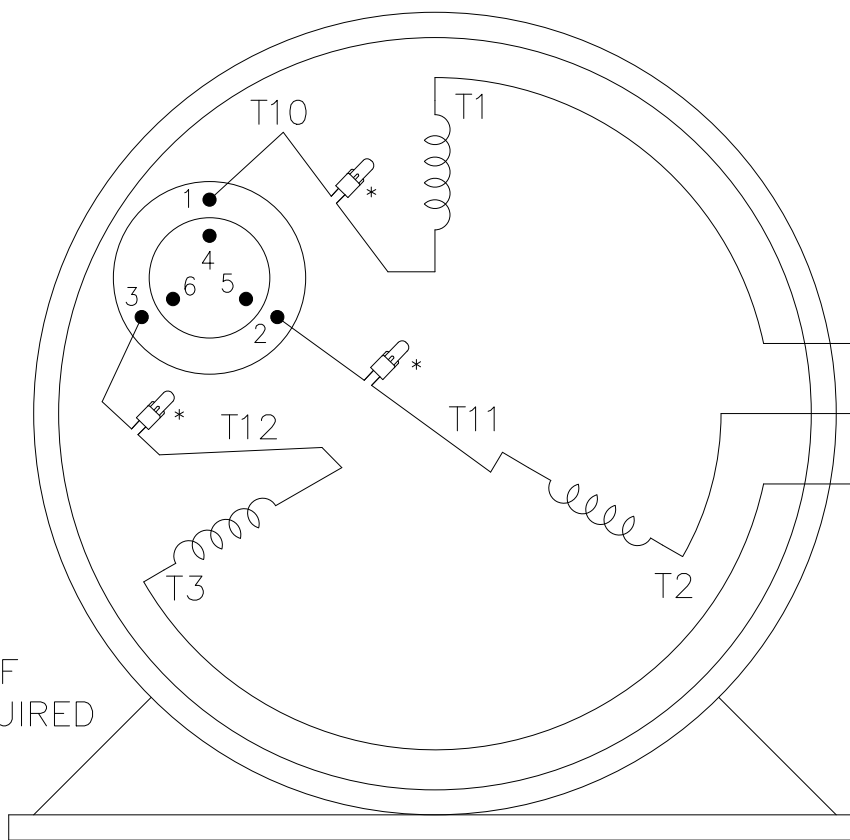
NOTE:
ACTUAL PROTECTORS
TERMINAL LOCATIONS
FOR LEAD CONNECTIONS

NOTE: TERMINAL BOARD
CONNECTIONS

LEADS WITH TERMINALS
SHOULD BE CONNECTED
TO INBOARD SIDE OF
TERMINAL BOARD.

T1 --- L1 — 4A }
T2 --- L2 — 5A }
T3 --- L3 — 6A }

IF
REQUIRED



T1 — 4A }
T2 — 5A } IF
T3 — 6A } REQUIRED

—TO REVERSE ROTATION—
INTERCHANGE ANY TWO
LINE LEAD CONNECTIONS

VIEW OF TERMINAL END

OPTIONAL CORD
CONNECTION

L1 — WHITE
L2 — RED
L3 — BLACK

		T6CK
T6CA		T6BM
T4CC		T4AY
T4C		T2DL
T6D		T2H

* USE PRESSURE CONNECTORS FOR MT2 PLANT ONLY

NO.	REVISION	BY & DATE	CHK	TOLERANCES UNLESS SPECIFIED		REGAL™ Regal Beloit America, Inc.	DRAWN KL 08-25-1993
				DEC.	INCHES		
12	UPDATED PER ECR-0211312	SG 07/27/2021	BD	.X	± -		CHK RD 11-12-2014
11	ADDED THE OPTIONAL CORD CONNECTION	JAH 11-12-2014	RD	.XX	± -	TITLE CONNECTION DIAGRAM	APPD RD 11-12-2014
10	PRESSURE CONNECTORS ADDED (QTY 3)	PVR 07-09-2014	GR	.XXX	± -	SINGLE VOLT - 3Ø WITH OVERLOAD PROT.	SCALE 1=1
9	ADDED 4A, 5A, & 6A "IF REQUIRED" MU44987	MSG 01-07-2002	SAS	.XXXX	± -	MAT'L.	REF
			ANG	± -		FINISH	FMF
							PREV

THIS DRAWING IN DESIGN AND DETAIL IS OUR PROPERTY AND MUST NOT BE USED EXCEPT IN CONNECTION WITH OUR WORK ALL RIGHTS OF DESIGN AND INVENTION ARE RESERVED THIS IS AN ELECTRONICALLY GENERATED DOCUMENT - DO NOT SCALE THIS PRINT

RFP
DIST LB-WP

CAD FILE EE7335B

SIZE A DRAWING NO. EE7335B PAGE OF 12 REV. 12